

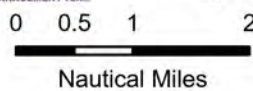
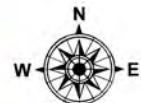
Pilot Flying V

AZ-FTA-000410

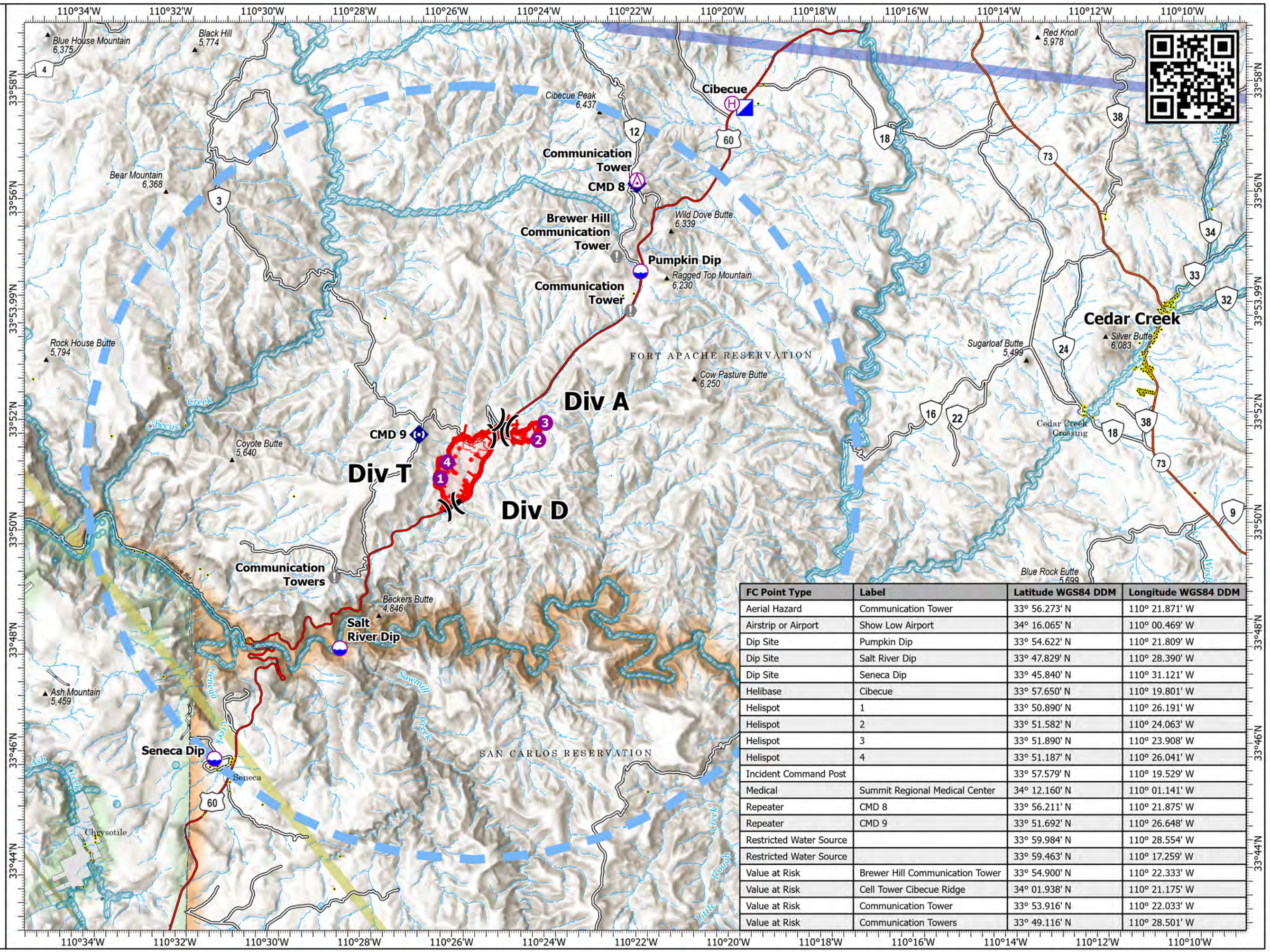
7/9/2023 Day

831 acres at 7/8/2023 2141 hr

- Aerial Hazard
- Dip Site
- Helispot
- Helibase
- Division Break
- Incident Command Post
- Value at Risk
- Repeater
- IR Isolated Heat Source
- Possible IR Heat Source
- Temporary Flight Restriction
- Contained
- Uncontained
- IR Heat Perimeter
- IR Scattered Heat
- Wildfire Daily Fire Perimeter
- Structure
- Primary Highway
- Secondary Highway
- Road, Unspecified
- Road, Paved
- Road, Dirt
- Aerial Fire Retardant Avoidance
- Instrument Route Overlay Line
- Visual Route Overlay Line
- Visual Route Line
- Bureau of Indian Affairs (BIA)
- US Forest Service (USFS)
- Private



1:120,000 | WMZ Type 3 IMT GISS | 7/9/2023 0440
 Acres from IR & GPS
 North American 1983 Datum, LatLong Grid



FC Point Type	Label	Latitude WGS84 DDM	Longitude WGS84 DDM
Aerial Hazard	Communication Tower	33° 56.273' N	110° 21.871' W
Airstrip or Airport	Show Low Airport	34° 16.065' N	110° 00.469' W
Dip Site	Pumpkin Dip	33° 54.622' N	110° 21.809' W
Dip Site	Salt River Dip	33° 47.829' N	110° 28.390' W
Dip Site	Seneca Dip	33° 45.840' N	110° 31.121' W
Helibase	Cibecue	33° 57.650' N	110° 19.801' W
Helispot	1	33° 50.890' N	110° 26.191' W
Helispot	2	33° 51.582' N	110° 24.063' W
Helispot	3	33° 51.890' N	110° 23.908' W
Helispot	4	33° 51.187' N	110° 26.041' W
Incident Command Post		33° 57.579' N	110° 19.529' W
Medical	Summit Regional Medical Center	34° 12.160' N	110° 01.141' W
Repeater	CMD 8	33° 56.211' N	110° 21.875' W
Repeater	CMD 9	33° 51.692' N	110° 26.648' W
Restricted Water Source		33° 59.984' N	110° 28.554' W
Restricted Water Source		33° 59.463' N	110° 17.259' W
Value at Risk	Brewer Hill Communication Tower	33° 54.900' N	110° 22.333' W
Value at Risk	Cell Tower Cibecue Ridge	34° 01.938' N	110° 21.175' W
Value at Risk	Communication Tower	33° 53.916' N	110° 22.033' W
Value at Risk	Communication Towers	33° 49.116' N	110° 28.501' W