

Definition of Participating Aircraft

The mission must be identified as participating in at least one of the Community Life Lines; as defined in the National Response Framework: Safety and Security; Food, Water, and Shelter; Health and Medical; Energy (Power and Fuel); Communications; Transportation; and Hazardous Materials.

Each category defined below as found in the NRF Fourth Edition October 28, 2019.

Safety and Security: Law enforcement and government services, as well as the associated assets that maintain communal security, provide search and rescue, evacuations, and firefighting capabilities, and promote responder safety.

Food, Water, Shelter: Support systems that enable the sustainment of life, such as water treatment, transmission, and distribution systems; food retail and distribution networks; wastewater collection and treatment systems; as well as sheltering, and agriculture.

Health and Medical: Infrastructure and service providers for medical care, public health, patient movement, fatality management, behavioral health, veterinary support, and health or medical supply chains.

Energy: Service providers for electric power infrastructure, composed of generation, transmission, and distribution systems, as well as gas and liquid fuel processing, transportation, and delivery systems. Disruptions can have a limiting effect on the functionality of other community lifelines.

Communications: Infrastructure owners and operators of broadband Internet, cellular networks, landline telephony, cable services (to include undersea cable), satellite communications services, and broadcast networks (radio and television). Communication systems encompass a large set of diverse modes of delivery and technologies, often intertwined but largely operating independently. Services include elements such as alerts, warnings, and messages, as well as 911 and dispatch.

Transportation: Multiple modes of transportation that often serve complementary functions and create redundancy, adding to the inherent resilience in overall transportation networks. Transportation infrastructure generally includes highway/roadways, mass transit, railway, aviation, maritime, pipeline, and intermodal systems.

Hazardous Materials: Systems that mitigate threats to public health/welfare and the environment. This includes assessment of facilities that use, generate, and store hazardous substances, as well as specialized conveyance assets and efforts to identify, contain, and remove incident debris, pollution, contaminants, oil or other hazardous substances.

Hazard Relief Participant Request Form

(Complete information below. Attach Graphic Depiction of route of flight)

Date/Time:

Pilot:

Phone:

Email:

NOTAM (TFR) NUMBERS AND INCIDENT NAME(S) REQUESTED:

APPROVAL INFORMATION FOR PARTICIPANT:

☐ FEMA MISSION ASSIGNMENT (MA) #:

☐ Mission Resource Task (MRT) #:

☐ STATE DESIGNATED APPROVAL DOCUMENT:

☐ OTHER:

☐ SGI Waiver

AIRCRAFT INFORMATION: N# _____ OR CALL SIGN _____

Category: ☐ UAS ☐ Fixed Wing ☐ Rotor Wing ☐ Other _____

Type: _____

Paint Colors or Distinct Markings: _____

SUPPORT TO AID DISASTER RESPONSE OR RECOVERY:

Mission Objective: (Definitions on Back Side)

☐ Safety and Security

☐ Food, Water, Shelter

☐ Health and Medical

☐ Energy (Power and Fuel)

☐ Communications

☐ Transportation

☐ Hazardous Materials

Requirements to perform mission:

☐ Day time

☐ Nighttime

☐ Altitude:

Can mission be
performed above or
outside TFR?

☐ Yes

☐ No

Possible
alternatives
to conduct
mission?

What Technology is being used:

Who will have access to
data?

Contingency Plans:

This form was submitted to:

Phone: _____

Email: _____

Date and Time: _____

Participant Approved by:

Name: _____ Agency: _____ Phone: _____ Email: _____

Date and Time: _____

Priority Ranking of Participant Requests

Mission Assignment	Tactical/Non-Tactical	Mission Profile	Timeframe	Critical/Non-Critical	Alternatives to complete mission?	Priority (Who makes the priority ranking)
Critical Infrastructure Recon				Critical		
Critical Infrastructure Work				Critical		
VIP Recon				Non-critical		
Insurance Inventory				Non-critical		

Briefing Package Items (Notification Procedures; FTA, War Map, Special Instructions (SPINS), etc.)

- Notification Process
 - Advanced/If time permits non-advanced request
 - Contact Information: Dispatch Center, Incident phone number (AOBD), LOFR
- Mission Expectation: (Dates, time frame, altitude, locations of operations, **Operational Control of mission**, ATGS assignment and contact)
- FTA Brochure
- Frequencies
- Any Special Instructions

Internal Procedures for Participating Aircraft Within Incident TFR

The Local Dispatch Center will:

- Receive phone call from Participant Pilot, gather Participant Pilot Call back information and provide a dispatch email address to the Participant Pilot POC.
- Send the Requestor the Aviation Participant Request Form.
- Once they receive the completed request, review request to determine if requestor qualifies as participant utilizing specified criteria (decision tree/checklist), forward this to the respective Geographic Area Aircraft Coordinator.
- Forward any updated/revised request received throughout the day to the Geographic Area Aircraft Coordinator.
- If approved, provide Primary Frequency and secondary as necessary.
- Identify trigger point for additional coordination effort: abundance of requests, FEMA activation or other.

The Geographic Area Aircraft Coordinator will:

- Receive and review the daily flight plans from the Participant by 1800 and forward the information to the following individuals:
 - This will vary by Geographic Coordination Area. The Geographic Coordination Area will identify appropriate notification procedures.
 - Example: Respective State and Federal Aviation Officers.
- Forward any updated/revised requests received throughout the day to the respective state and federal aviation officers.
- Provide Primary Frequency and secondary as necessary.
- Address any agency concerns by notifying the Participant if there are any communication/coordination issues that need to be resolved.
- Identify trigger point for additional coordination effort: abundance of requests, FEMA activated or other.

The Incident Aerial Supervisor will:

- Upon initial contact with the Participant Aircraft the Aerial Supervisor will provide direction for entering, working in, and departing TFR.
- Will contact dispatch center / EOC / Federal POC / if Participant request is denied access to TFR.
- Establish that participants will be obliged to withdraw from activities if negotiations / coordination fails or are violated.
- Require Participants to be responsible and accountable: Ensure that Participants have a plan in place for suspending or withdrawing from engagement if / when safety concerns arise.

Respective State and Federal Aviation Officers or Incident AOBD's will:

- Provide any Participant mission/flight plan to their incident Aerial Supervisor(s) or Incident Commander(s).

Procedures for Participating Aircraft Within Incident TFRs

The following Visual Flight Rules (VFR) procedures should be followed to ensure proper notification and safe integration of (Name of Participant) aircraft that need to operate within GACC's Fire Temporary Flight Restrictions (TFR)s as established by the Federal Aviation Administration (FAA). These procedures should be amended and re-issued if issues arise that require the procedure to be modified.

The key participant described in the procedures below are referenced on the last page with a list of names, phone numbers, and email addresses.

(Name of Participant) throughout this document will be named as the participant.

Participating Aircraft POC will:

- Contact the phone number listed on the TFR by 1600 the day prior, to request an email address for the appropriate POC, and to submit the completed Aviation Participant Request Form.
- Prior to takeoff, the Participant POC, or mission pilot, will call the number published in the NOTAM to determine frequencies, if Aerial Supervision is present, their call sign, and the participants ETA.
- Participant pilot will contact the Aerial Supervisor(s) prior to entering the TFR(s) with call sign, type aircraft and cardinal position to acquire instructions and coordinate their operation in real-time with the incident, per interagency Fire Traffic Area (FTA) and Aerial Supervision protocols.
 - Participant must be operating under the direction of the official in charge of on scene emergency response activities, with written approval.(Aviation Participant Request Form)
 - If no Aerial Supervision is in place, Participant aircraft will attempt communications on the appropriate published TFR frequency.
 - If no aircraft are flying **and** there is no reply from any aircraft on the assigned frequency, Participant aircraft operations will proceed with see and avoid.
 - If there is no Aerial Supervisor in the TFR, they should announce on the published TFR frequency prior to entering and departing.
 - When operating within the TFR and in contact with Aerial Supervision, the Participant pilot will comply with the directions provided by the incident Aerial Supervisor.
 - Ensure that participation does not interfere with suppression operations.
 - Participants will be obliged to withdraw from activities if negotiations / coordination fails or are violated.
 - Participants are required to be responsible and accountable: Participants must have a plan in place for suspending or withdrawing from engagement if / when safety concerns arise.
- Participant pilot will notify the Aerial Supervisor when the mission is concluded. In the absence of verbal communication with an Aerial Supervisor, the participant or designee will notify the appropriate phone number as published in the TFR.
- If there is an undue delay or refusal to grant access into the TFR by an Aerial Supervisor to a non-firefighting participating aircraft, the requesting operator will notify the FAA Liaison, Greg Moore, at 253-302-1837.

Background

Over the past several years, throughout the Country, the USDA Forest Service (FS) and National Wildland Coordination Group (NWCG) Members are receiving increasing requests from non-governmental organizations to fly aircraft within incident designated Temporary Flight Restrictions (TFRs) under 91.137. These non-governmental requests are from incident stakeholders (Power Companies, Insurance Companies, Water Districts, Military, Private Land Owners and other stakeholders) and are not directly associated with the incident command/management objectives.

Proposed Change to NWCG PMS-520 “Participating Aircraft”

The USDA, Forest Service is proposing to interagency partners the modification of the interagency definition of “Participating Aircraft” specific to 91.137 (a) (2) TFRs.

The mission of the non-suppression participating aircraft must be identified as a stakeholder in one of the Community Lifeline categories as defined in the National Response Framework:

- Safety and Security
 - Law enforcement and government services, as well as the associated assets that maintain communal security, provide search and rescue, evacuations, and firefighting capabilities, and promote responder safety.
- Food, Water, and Shelter
 - Support systems that enable the sustainment of life, such as water treatment, transmission, and distribution systems; food retail and distribution networks; wastewater collection and treatment systems; as well as sheltering, and agriculture.
- Health and Medical
 - Infrastructure and service providers for medical care, public health, patient movement, fatality management, behavioral health, veterinary support, and health or medical supply chains.
- Energy (Power and Fuel)
 - Service providers for electric power infrastructure, composed of generation, transmission, and distribution systems, as well as gas and liquid fuel processing, transportation, and delivery systems. Disruptions can have a limiting effect on the functionality of other community lifelines.
- Communications
 - Infrastructure owners and operators of broadband Internet, cellular networks, landline telephony, cable services (to include undersea).
- Transportation/Hazardous Materials
 - Highway/Roadway/Motor Vehicle, Mass Transit, Railway, Aviation, Maritime or Facilities, HAZMAT, Pollutants, Contaminants

To be considered a participating aircraft these non-suppression resources, when approved, must establish themselves as a stakeholder and follow the plan approved by the agency official in charge. Participation is on a case by case basis and resources will participate in the planning, briefing and while conducting mission flights. All aircraft deemed participating must gain approval by the official in charge.

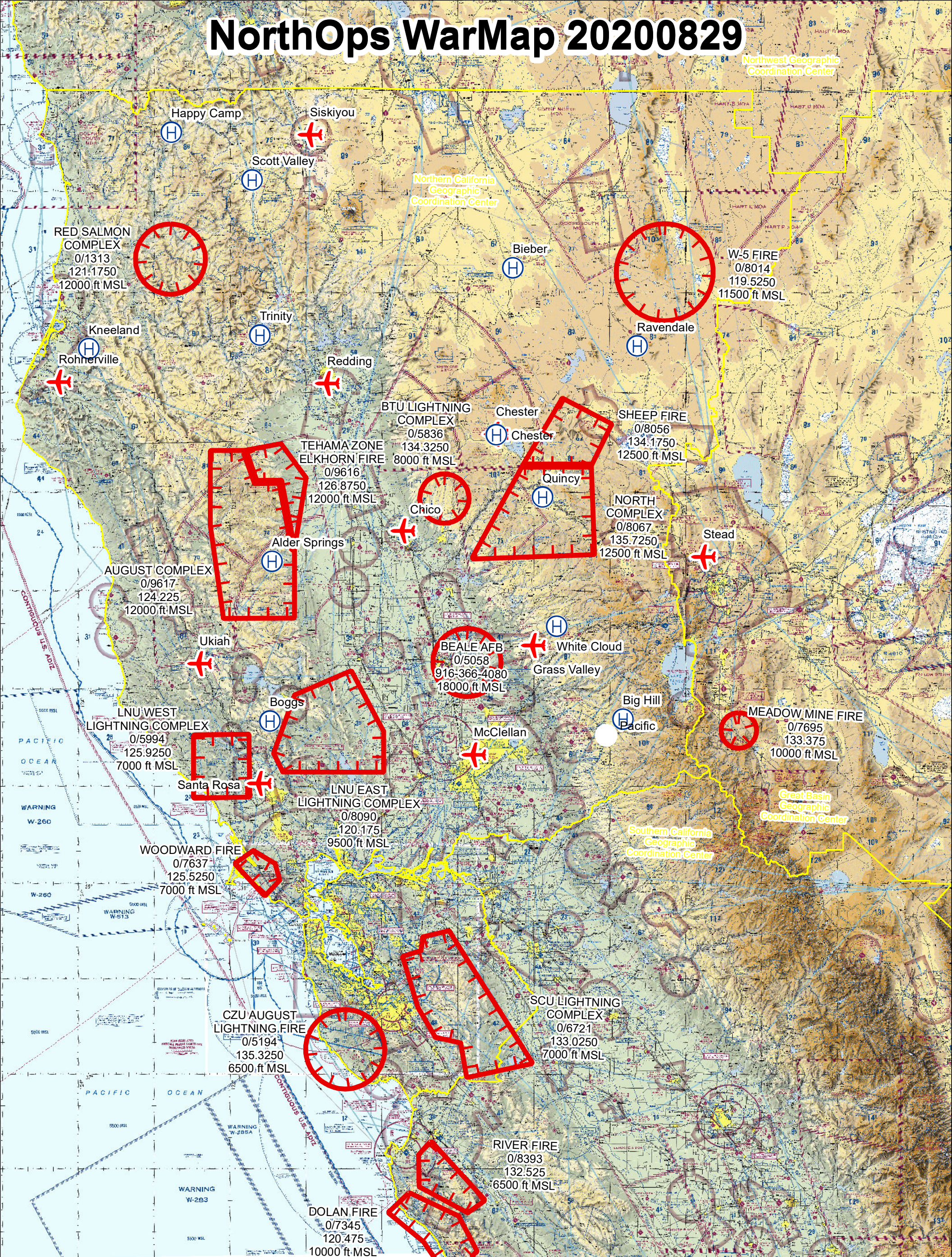
Question

The official in charge of on scene emergency response activity would like to determine if they have liability for all aircraft deemed “participating” in the hazard relief activities within the designated area; since they are operating under the direction of the official in charge of on scene emergency response activities and may be non-NWCG agency members the USFS believes we would be allowing participation in good faith and that each party is responsible for their own safety as individual parties achieving different objectives within coordination.





Question

Will OGC and FAA provide the FS with a statement/disclaimer that will be inserted on an authorization form that will remove agency liability from the “official in charge of on scene emergency response activities” and allow Stakeholder aircraft to participate in flight operations under a 91.137 (a) (2) TFR?

NorthOps WarMap 20200829



Legend

-  Airtanker Base
-  Helibase
-  Current TFRs
-  GACC Boundary

0 10 20 30 40
Nautical Miles



Static QR Code



Daily QR Code



Not to be used for Navigational Purposes.
Outside of TFRs, aviators will practice
Hemispheric Flight rules.

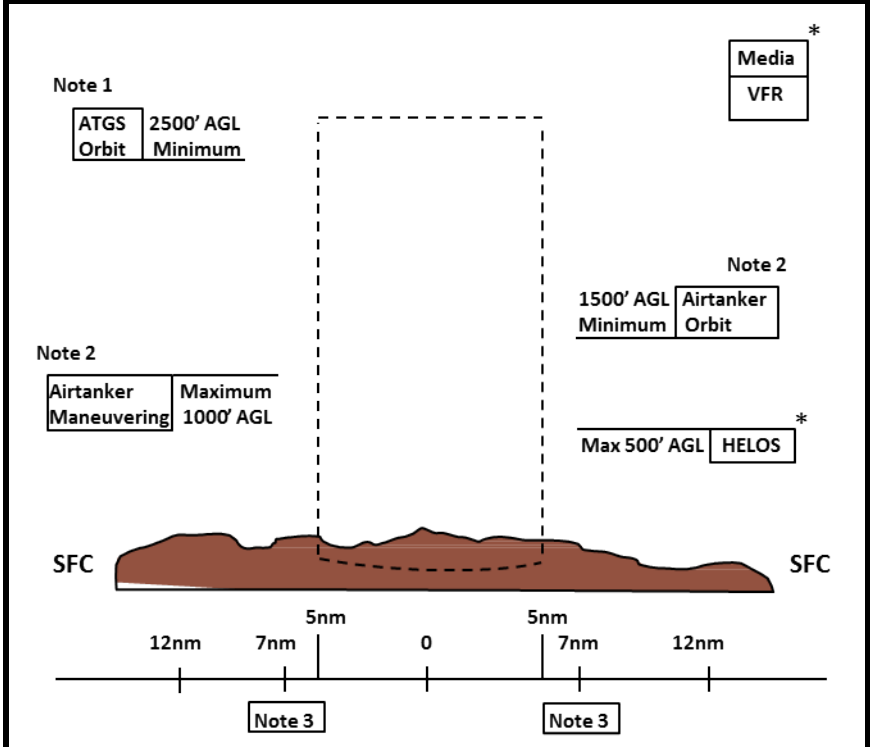
Fire Traffic Area (FTA) 09 Dec 2015

*** Clearance is required to enter the FTA ***

Initial Radio Contact: 12 nm on assigned air tactical frequency.

No Radio Contact: Hold a minimum of 7 nm from the incident.

Note: Airtanker maneuvering altitude determines minimum airtanker and ATGS orbit altitudes. Assigned altitudes may be higher and will be stated as MSL.



Note 1	1000' min. separation between ATGS orbit and airtanker orbit altitude.
Note 2	500' min. separation between airtanker orbit and maneuvering altitude.
Note 3	On arrival reduce speed to cross 7 nm at assigned altitude and 150 KIAS or less.

* Helicopters: Fly assigned altitudes and routes.

* Media: Maintain VFR separation above highest incident aircraft or position and altitude as assigned by controlling aircraft.

Airtanker Base As Assigned	Air Guard 168.625 Tx Tone 110.9	Air to Air As Assigned	National Flight Following 168.650 Tone 110.9 TX and RX
-------------------------------	------------------------------------	---------------------------	---



National Interagency Airspace: <http://airspacecoordination.org>

Incident Airspace Reminders

Fire Traffic Area (FTA)

- The FTA is a communication protocol for firefighting agencies. It does not pertain to other aircraft that have legal access granted by the FAA within a specific TFR.
 - The FTA should not be confused with a TFR, which is a legal restriction established by the Federal Aviation Administration to restrict aviation traffic while the FTA is a communication tool establishing protocol within firefighting agencies.
 - Participating aircraft must adhere to TFR policies as established by the FAA.
 - For example, if the TFR boundary of a polygon exceeds the 12-mile initial contact ring, clearance will still be required in order to enter the TFR.
 - If the TFR boundary is within the 12-mile ring, proceed with standard FTA communication procedures.
- must obtain clearance into or the incident TFR by the on scene aerial supervision or the official in charge of the on-scene emergency response activities.

- **A ROSS order or Aircraft Dispatch Form is not a clearance into a TFR.**
- Aircraft not assigned to the incident must stay clear of the TFR unless communication is established with the controlling entity (ATGS, ASM, Leadplane, etc.) and authorization is given to enter/transit the TFR.
- The first responding aircraft, typically on extended attack incidents, must have reasonable assurance that there are no other aircraft in the TFR by making blind calls on the TFR frequency, other assigned air to air frequencies, and double checking with ground personnel (IC, OPS, or Helibase).
- There may be multiple aircraft operations areas within a TFR.
- Remember - Non-Incident aircraft may enter the TFR under the following conditions:

- The aircraft is carrying **law enforcement officials**.
- The aircraft is on a flight plan and carrying **properly accredited news representatives**.
- The aircraft is operating under the **ATC approved IFR flight plan**.
- The operation is conducted **directly to or from an airport** within the area, or is necessitated by the impracticability of VFR flight above or around the area due to weather, or terrain; notification is given to the Flight Service Station (FSS) or **ATC facility** specified in the NOTAM to receive advisories concerning disaster relief aircraft operations; and the operation does not hamper or endanger relief activities and is not conducted for observing the disaster.

Further Information: Interagency Aerial Supervision Guide (NFES 2544)

HURRICANE MICHAEL SPINS

CHG 7 CURRENT AS OF: 1100 EDT, 13 OCT 2018

1. (U) SAR HURRICANE MICHAEL SPINS. THE FOLLOWING SPINS PERTAIN TO SAR OPERATIONS FOR HURRICANE MICHAEL.

1.1. (U) MISSIONS. THESE SPINS PROVIDE PROCEDURES FOR THE FOLLOWING MISSIONS AS FOLLOW:

- AIRBORNE SAR ASSETS
- AIRBORNE C2 ASSETS

1.2. (U) SAR ASSETS. ALL SAR FORCES WILL CHECK IN WITH AIRBORNE C2 ON 136.375. IF NOT PREVIOUSLY TASKED SAR FORCES WILL RECEIVE AIRBORNE TASKINGS VIA AIRBORNE C2 FREQUENCY PRI: 123.1 / SEC: 350.025.

- US CBP P-3 CALLSIGN: OMAHA

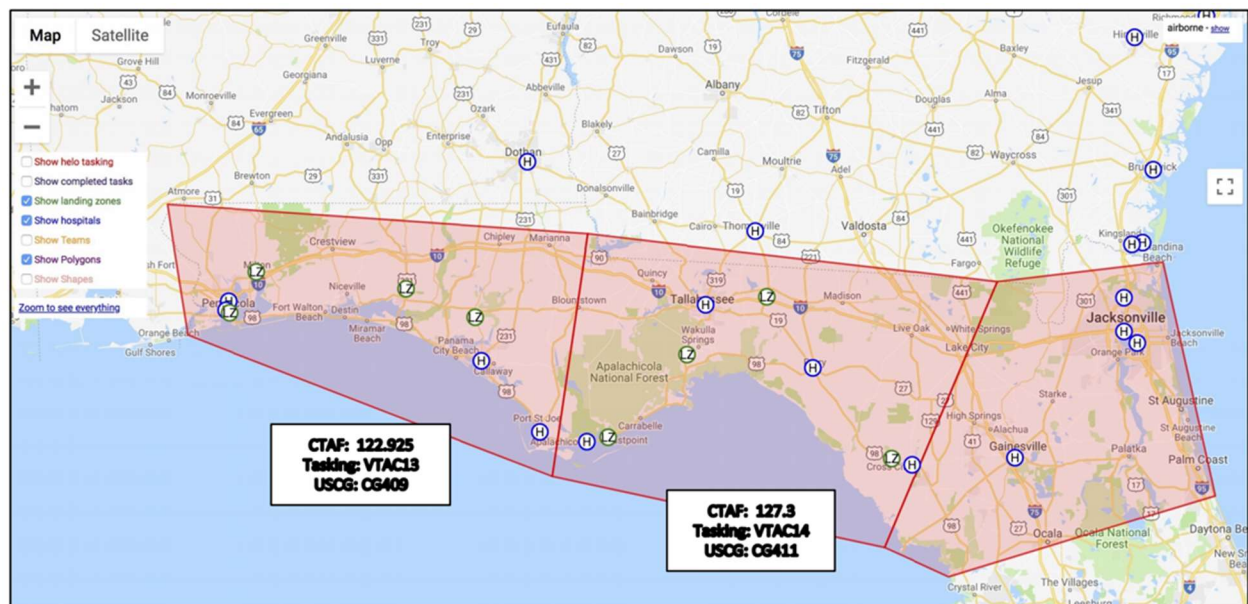
2. (U) SAR SECTORS. THE STATE OF FLORIDA HAS DIVIDED NORTH FLORIDA INTO 2 AIR SECTORS WHICH ARE DEFINED AS:

Region West (FR1)

305002N0845928W (MAI067007.5)
293238N0851244W (HLL149042.2)
301752N0872811W (BFM118035.8)
305932N0873546W (MVC200030.6)

Region EAST (FR2)

305002N0845928W (MAI067007.5)
303455N0822716W (AYS173041.5)
290922N0830858W (CTY193027.0)
293228N0851244W (HLL149042.3)



UNCLASSIFIED/FOR OFFICIAL USE ONLY

HURRICANE MICHAEL SPINS

CHG 7 CURRENT AS OF: 1100 EDT, 13 OCT 2018

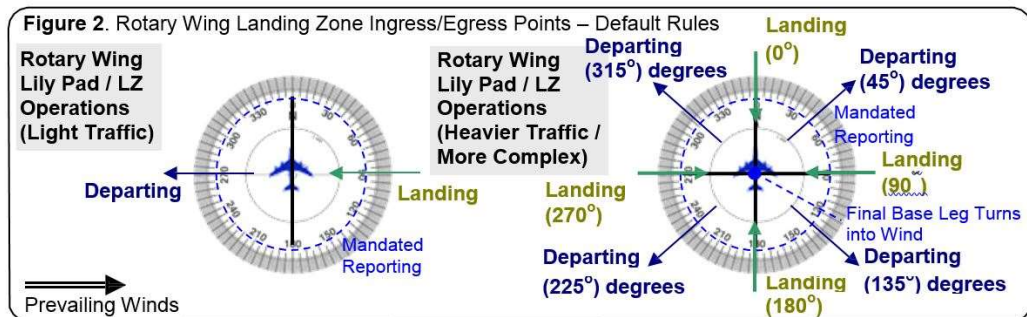
2.1. (U) COMMUNICATION PLAN. IN ORDER TO FACILITATE EFFECTIVE COMMUNICATION IN THE NORTH FLORIDA AO, AIRCRAFT WILL ATTEMPT TO MAKE SELF-ANNOUNCED CTAF RADIO CALLS. THE FOLLOWING RADIOS AND FREQUENCIES WILL BE USED DURING THIS OPERATION:

REGION WEST (FR1)

AIR TO AIR VHF PRIMARY
--- CTAF 122.925
AIR TO AIR VHF SECONDARY
--- 123.1
AIR TO GROUND TACTICAL: VTAC13 158.7375

REGION EAST (FR2)

AIR TO AIR VHF PRIMARY
--- 123.1
AIR TO GROUND TACTICAL: VTAC14 159.4725



UNCLASSIFIED/FOR OFFICIAL USE ONLY

HURRICANE MICHAEL SPINS

CHG 7 CURRENT AS OF: 1100 EDT, 13 OCT 2018

LANDING ZONE/LILLYPAD LOCATION

LANDING ZONES (use http://airnav.com/ for airports/heliports)								
Zone	Landing Zone	Address	Lat	Long	Freq	Phone Number	Status	
KCTY	Cross City Airport		29-38.01	083-06.48	122.8	352-498-0221		
	Jefferson County Sheriff's Office	171 Industrial Park, Monticello, FL	30-30.18	083-52.89		850-97-2523	LZ of Opportunity	
	Milton High School	5445 Stewart St, Milton, FL 32570	30-37.97	087-02.70		850-983-5600	LZ of Opportunity	
	Bozeman High School	13410 Hwy 77, Panama City, FL	30-23.64	085-41.18		850-767-1300	LZ of Opportunity	
	Vrooman Park	30 6th Street, Eastpoint, FL	29-44.87	084-51.93			LZ of Opportunity	
	Wakulla County Health Department	48 Oak St, Crawfordville, FL	30-11.66	084-22.59		850-926-0400	Unverified landing sight	
	Pensacola Bay Center	201 E Gregory St, Pensacola FL	30-24.99	087-12.54		850-432-0800	LZ of Opportunity	
	Freeport High School	12615 U.S. 331 Bus, Freeport, FL	30-32.65	086-06.94		850-892-1201	LZ of Opportunity	
	Sacred Heart Hospital on the Gulf		29-46.73	085-17.26			Ground pad, 40'X40'. Alternate landing location at local Highschool.	
	Wewa Medical Center		30-06.40	085-12.05				
	Bay Medical Center- Sacred Heart		30-09.58	085-38.92			Ground concrete pad,	
	Bozeman Highschool		30-23.64	085-41.19			LZ of Opportunity	
	Weems Memorials Hospital		29-43.44	084-59.51			Hospital indicates helipad onsite is not recommended. Small pad with power line obstructions. Recommends using Apalachicola Airport, 3 miles west of facility. Airport is site of EOC.	
	Vrooman Park		29-42.84	085-01.22			LZ of Opportunity	
	Wakulla County Health Department		30-11.66	084-22.60			unverified landing site	
	Woodville Elementary		30-18.83	084-14.75				
	Freeport High School		30-43.89	086-09.13			LZ of Opportunity DeFuniak Springs Airport	
	Perido Key Fire Station	15510 Perdido Key Drive, Pensacola	30-17.50	087-28.17			Elevated, rooftop, 3rd floor, concrete, max gross weight is 8000lbs, concrete. EC-135.	
	POD Apalachicola	8 Airport Road	29-43.38	085-01.64				
	POD East Point	Baseball Field 6th ave	29-44.78	084-51.88				
	POD Carabelle	1601 Kenneth B Cope Ave	29-51.05	084-38.74				
	Hammond House Mexico Beach	XH3G+J6 Mexico Beach, Florida	29-57.20	085-25.46				

UNCLASSIFIED/FOR OFFICIAL USE ONLY

HURRICANE MICHAEL SPINS

CHG 7 CURRENT AS OF: 1100 EDT, 13 OCT 2018

CONTINGENCY AIRSPACE MANAGEMENT – MISSION TYPE ALTITUDE SEPARATION

5,000' AGL (up to but not including)		NON – SAR FIXED-WING/VP/MEDIA
2,500' AGL (up to but not including)		
2,000' AGL		BUFFER ZONE
2,000' AGL (up to but not including)		EAST 1500' – 1700' WEST 1800' – 2000'
1,500' AGL (up to but not including)		NON-SAR R-W
1,000' AGL (up to but not including)		
1,000' AGL (up to but not including)		EAST 800' WEST 900'
500' AGL (up to but not including)		R-W MED EVAC/RESCUE PERSONNEL
500' AGL (up to but not including)		
SFC		ROTARY WING (R-W) SAR/MED EVAC & SLING LOAD OPERATIONS
400' AGL (up to but not including)		
SFC		SMALL UAS

3.(U) FLIGHT ALTITUDES. ALL RESCUE AIRCRAFT ENROUTE ALTITUDES WILL BE AS FOLLOWS, UNLESS SUPERCEDED BY FAA DIRECTION:

- SMALL SCALE UAS
 - SFC-400FT AGL
- HELICOPTER SAR/MED EVAC AND SLING OPERATIONS
 - SFC-500 FEET AGL
- HELICOPTER MED EVACUATION/RESCUE PERSONNEL
 - 500-1000FT AGL
 - EAST BOUND – 600FT
 - WEST BOUND – 800FT

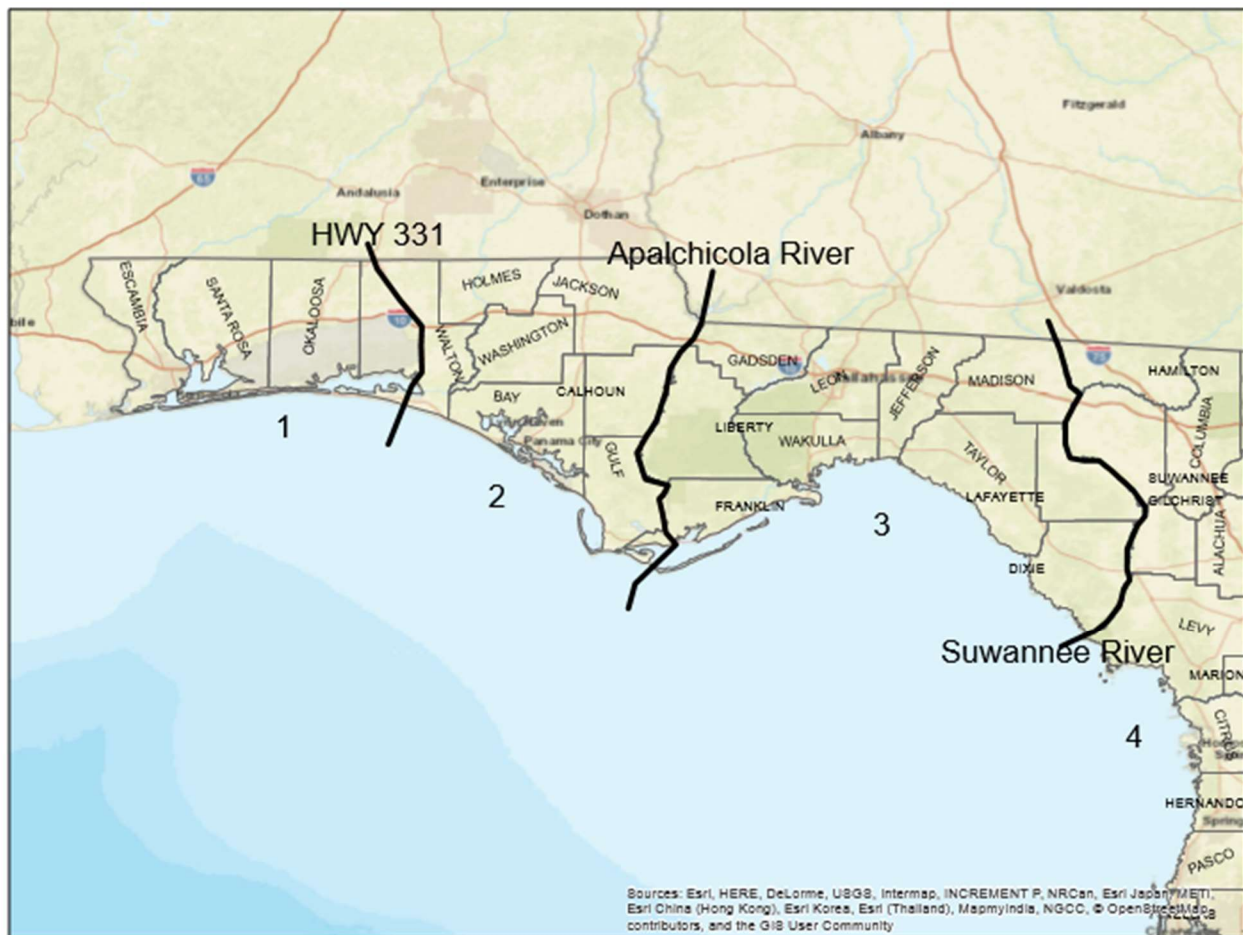
UNCLASSIFIED/FOR OFFICIAL USE ONLY

HURRICANE MICHAEL SPINS

CHG 7 CURRENT AS OF: 1100 EDT, 13 OCT 2018

- SMALL FIXED WING OPERATIONAL AREA
 - 1000-1500 FEET AGL
- NON SAR HELICOPTER OPERATIONS
 - 1500-2000FT AGL
- BUFFER ZONE
 - 2000-2500FT AGL
- NON SAR FIXED WING/VIP/MEDIA
 - 2500-5000FT AGL

4. (U) URBAN SEARCH AND RESCUE (USAR) DIVISION MAP. THE DIVISION MAP IDENTIFIES AREAS OF GROUND FORCE OPERATIONS. GROUND FORCES WILL INTEGRATE WITH AIRBORNE FORCES FOR SAR OPERATIONS. GROUND FORCES WILL ENTER FROM THE NORTH WHERE POSSIBLE AND WORK TOWARDS THE SOUTH TO THE HARDEST HIT DISASTER AREAS.



UNCLASSIFIED/FOR OFFICIAL USE ONLY

HURRICANE MICHAEL SPINS

CHG 7 CURRENT AS OF: 1100 EDT, 13 OCT 2018

5. (U) T10 SAR FORCES. ANY T10 SAR FORCES FLYING WITHIN THE DISASTER AREA WILL FOLLOW ALL FAA DIRECTIVES. AIRBORNE C2 PLATFORMS WILL NOT PROVIDE ANY ATC FUNCTIONS OR TRAFFIC ADVISORIES.

6. (U) TO ENSURE FLIGHT SAFETY, REPORT ANY OBSERVED UNMANNED UAS OPERATIONS TO THE FLORIDA AOB AT: AIROPS@EM.MYFLORIDA.COM OR (850) 815-4980.

7. (U) MODE 3 ALLOCATION. THE FOLLOWING MODE 3S HAVE BEEN ALLOCATED TO MISSION ASSIGNED AIRCRAFT. THIS LIST IS NOT DELEGATED BETWEEN STATES, T10, T32, OR OTHER GOVERNMENT AGENCIES. ANY C2 AGENCY INITIATING A TRACK ON THESE CODES ARE AUTHORIZED TO ID THE TRACK AS FRIEND.

5401-5477

6125-6150

6451-6472

7.1. (U) FLIGHT TRACKING PROGRAM. ALL AGENCIES CONDUCTING AIRCRAFT OPERATIONS ON AN AIR MISSION REQUEST FORM FROM THE FLORIDA AIR OPERATIONS BRANCH SHOULD PROVIDE CALL SIGN, AIRCRAFT TYPE (FIXED/ROTARY), AIRCRAFT MODEL, DEPARTURE LOCATION AND ASSOCIATED DATA (SAR/HOIST CAPABLE) FOR PLANNED AIRCRAFT OPERATIONS FOR THE NEXT 24 HOURS FOR A PREASSIGNED DISCRETE BEACON CODE TO THE FLORIDA AIR OPERATIONS BRANCH. THIS INFORMATION WILL BE USED BY THE CRISIS RESPONSE CENTER AND THE AIRBORNE C2 TO PROVIDE MISSION ASSIGNMENTS. EMAIL THE INFORMATION TO AIROPS@EM.MYFLORIDA.COM NOT LATER THAN 3:00 PM EDT DAILY.

7.2. (U) DISCRETE BEACON CODE. ALL VFR AIRCRAFT WILL BE ON A DISCRETE BEACON CODE AS ASSIGNED BY THE FLORIDA AOB. AIRCRAFT OPERATIONS THAT HAVE NOT BEEN ASSIGNED A BEACON CODE IN ACCORDANCE WITH 7.1 ABOVE ON THE FLIGHT TRACKING PROGRAM MUST CONTACT THE FLORIDA AOB AT (850) 815-4980 BY 1700 EDT DAY PRIOR. **ALL ISSUED "MISSION" BEACON CODES SHALL EXPIRE AT MIDNIGHT.**

8. (U) THE STANDARD REFERENCE SYSTEM FOR PASSING LOCATIONS IS LATITUDE AND LONGITUDE. BE PREPARED TO CONVERT FORMATS. GLOBAL AREA REFERENCE SYSTEM (GARS) WILL BE THE STANDARD FOR SEARCH OPERATIONS. PASS ANY POINT OF INTEREST IN LAT/LONG FORMAT. THE CIVIL AIR PATROL WILL BE UTILIZING THE CAP GRID SYSTEM.

FOREFLIGHT INSTRUCTIONS

1. IN FOREFLIGHT, CLICK ON "MORE" ON LOWER ICON BAR.
2. HIT "SETTINGS".
3. SCROLL DOWN AND TURN ON "ENABLE SEARCH AND RESCUE" AND "SAR WAYPOINTS AS LAT/LON".
4. GO BACK TO THE REGULAR MAP SCREEN AND UNDER THE OVERLAYS MENU SELECT EITHER "GARS GRID" OR "CAP GRID" DEPENDENT ON SYSTEM BEING UTILIZED.
 - NOTE FOR GRID SYSTEM, **DO NOT** USE CENTER IDENTIFIER E.G. DCA OR CLT UTILIZE NUMBERS ONLY.

UNCLASSIFIED/FOR OFFICIAL USE ONLY

HURRICANE MICHAEL SPINS

CHG 7 CURRENT AS OF: 1100 EDT, 13 OCT 2018

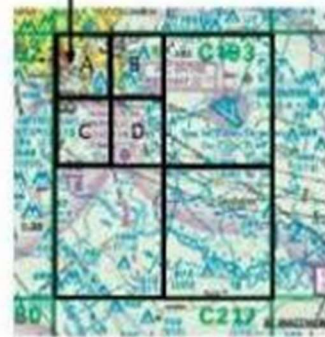
SEARCH GRID DESIGN

BASED ON SC Aeronautical Chart with C.A.P. Grid (2015)

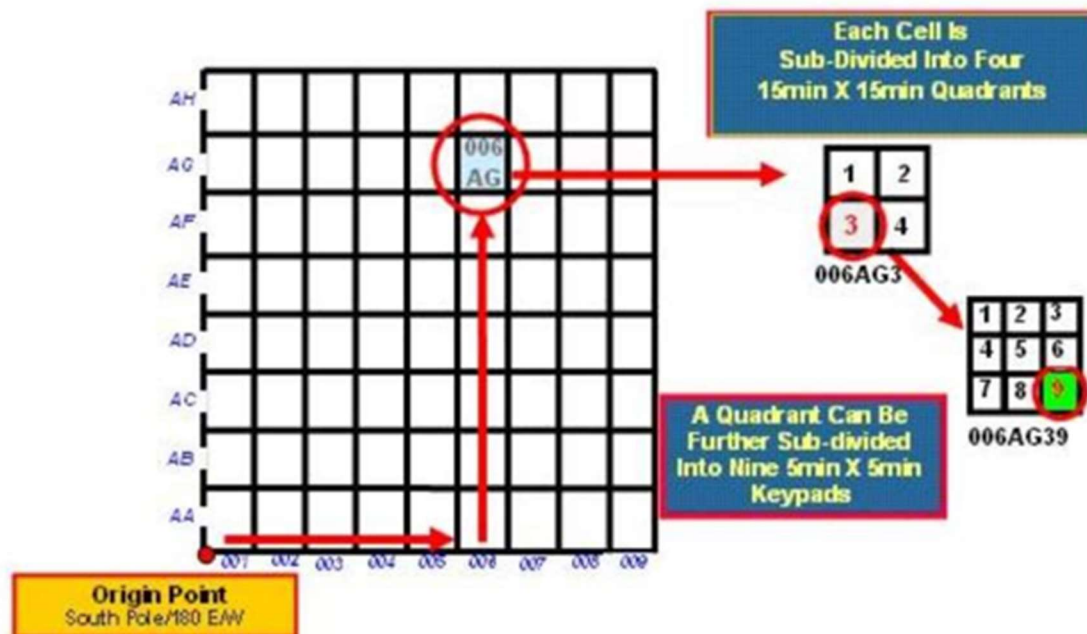
Search Box C193



EXAMPLE C193AA



GARS



UNCLASSIFIED/FOR OFFICIAL USE ONLY

HURRICANE MICHAEL SPINS

CHG 7 CURRENT AS OF: 1100 EDT, 13 OCT 2018

9. (U) HOSPITALS

HOSPITALS (use http://airnav.com/ for heliports)									
Airport ID	Hospital	Lat	Long	Status	Helo Pad?	Address	H60?	Phone Number	Freq
	BAPTIST HOSPITAL	30-25.77	087-13.88	Open		1000 W MORENO ST PENSACOLA		405-537-0601	
	BAY MEDICAL CENTER SACRED HEART HEALTH SYSTEM	30-09.58	085-38.92	Closed		615 N BONITA AVE PANAMA CITY 20370 NE BURNS AVE			
	CALHOUN-LIBERTY HOSPITAL	30-27.52	085-03.01	Limited		BLOUNTSTOWN 2626 CAPITAL MEDICAL BLVD			
	CAPITAL REGIONAL MEDICAL CENTER	30-28.56	084-13.92	Open		TALLAHASSEE		850-545-4345	
	CAPITAL REGIONAL MEDICAL CENTER, GADSDEN MEMORIAL CAMPUS	30-34.12	084-32.93	Limited		23186 BLUE STAR HWY QUINCY		850-545-4345	
	DOCTORS MEMORIAL HOSPITAL	30-45.65	085-41.00	Limited		2600 Hospital Drive BONIFAY		850-373-8393	
	DOCTORS' MEMORIAL HOSPITAL	30-07.21	083-35.59	Limited		333 N BYRON BUTLER PKWY PERRY		850-445-8002	
	EASTSIDE PSYCHIATRIC HOSPITAL	30-29.23	084-14.42	No Display		2634B CAPITAL CIRCLE NE, 2ND F TALLAHASSEE			
	EMERALD COAST BEHAVIORAL HOSPITAL	30-11.04	085-39.49	No Display		1940 HARRISON AVE PANAMA CITY			
	ENCOMPASS HEALTH REHABILITATION HOSPITAL OF PANAMA CITY	30-10.92	085-40.17	Closed		1847 FLORIDA AVE PANAMA CITY			
	ENCOMPASS HEALTH REHABILITATION HOSPITAL OF TALLAHASSEE	30-27.57	084-14.22	Limited		1675 RIGGINS RD TALLAHASSEE			
	FLORIDA STATE HOSPITAL	30-42.38	084-50.49	No Display		100 N MAIN ST CHATTAHOOCHEE			
	FORT WALTON BEACH MEDICAL CENTER	30-27.28	086-38.01	Open		1000 MAR-WALT DR FORT WALTON BEACH		850-461-5367	
	GULF BREEZE HOSPITAL	30-21.66	087-09.42	Open		1110 GULF BREEZE PKWY GULF BREEZE		405-537-0601	
	GULF COAST REGIONAL MEDICAL CENTER	30-11.19	085-39.91	Closed		449 W 23RD ST PANAMA CITY			
	GULF COAST TREATMENT CENTER	30-27.37	086-38.16	Limited		1015 MAR WALT DR FORT WALTON BEACH			
	HEALTHMARK REGIONAL MEDICAL CENTER	30-39.65	086-07.00	Open		4413 US HWY 331 S DEFUNIAK SPRINGS		850-974-1617	
	JACKSON HOSPITAL	30-47.21	085-14.49	Closed		4250 HOSPITAL DR MARIANNA			
	JAY HOSPITAL	30-57.01	087-09.05	Open		14114 ALABAMA ST JAY		850-565-0504	

UNCLASSIFIED/FOR OFFICIAL USE ONLY

HURRICANE MICHAEL SPINS

CHG 7 CURRENT AS OF: 1100 EDT, 13 OCT 2018

	LAKE CITY MEDICAL CENTER	30-11.04	082-41.18	Open		340 NW COMMERCE DR LAKE CITY		386-748-4715	
	MADISON COUNTY MEMORIAL HOSPITAL	30-28.25	083-25.15	Open		224 NW CRANE AVE MADISON		229-630-2397	
	NORTH OKALOOSA MEDICAL CENTER	30-44.13	086-33.74	Open		151 E REDSTONE AVE CRESTVIEW		843-615-2225	
	NORTHWEST FLORIDA COMMUNITY HOSPITAL	30-45.93	085-32.58	Open		1360 BRICKYARD RD CHIPLEY			
	SACRED HEART HOSPITAL	30-28.56	087-12.78	Open		5151 N NORTH NINTH AVENUE PENSACOLA		850-686-2158	
	SANTA ROSA MEDICAL CENTER	30-38.07	087-04.02	Open		6002 BERRYHILL RD MILTON		850-530-9924	
	SELECT SPECIALTY HOSPITAL - PANAMA CITY	30-09.58	085-38.92	Closed		615 N BONITA AVE PANAMA CITY			
	SELECT SPECIALTY HOSPITAL - TALLAHASSEE	30-27.71	084-15.17	Closed		1554 SURGEONS DR TALLAHASSEE			
	SELECT SPECIALTY HOSPITAL PENSACOLA	30-28.72	087-12.93	Closed		7000 COBBLE CREEK DR PENSACOLA			
	SHANDS LAKE SHORE REGIONAL MEDICAL CENTER	30-11.59	082-37.95	Open		368 NE FRANKLIN ST LAKE CITY		352-258-3486	
	SHANDS LIVE OAK REGIONAL MEDICAL CENTER	30-17.47	083-00.20	Open		1100 SW 11TH ST LIVE OAK		386-697-8457	
	TALLAHASSEE MEMORIAL HOSPITAL	30-27.39	084-15.70	Open		1300 MICCOSUKEE RD TALLAHASSEE		850-408-0646	
	TWIN CITIES HOSPITAL	30-49.02	086-32.34	Open		2190 HWY 85 N NICEVILLE		850-333-6812	
	WEST FLORIDA COMMUNITY CARE CENTER	30-38.06	087-02.54	No Display		5500 STEWART ST MILTON			
	WEST FLORIDA HOSPITAL	30-30.95	087-13.08	Open		8383 N DAVIS HWY PENSACOLA			
	BAY MEDICAL SACRED HEART BEACH ER	30-11.70	085-48.65	Closed		11111 PANAMA CITY BEACH PKWY PANAMA CITY BEACH			
	DESTIN EMERGENCY CARE CENTER	30-23.23	086-24.17	Closed		200 TEQUESTA DR DESTIN			
	TALLAHASSEE MEMORIAL EMERGENCY CENTER - NORTHEAST	30-30.02	084-15.43	Limited		1260 METROPOLITAN BLVD TALLAHASSEE			
	WEST FLORIDA HOSPITAL PERDIDO BAY ER	30-32.01	087-13.16	Limited		9400 WEST HIGHWAY 98 PENSACOLA			
3FL7	Sacred Heart Hospital Emerald Telport	30-22.70	086-18.42	Open		MIRAMAR BEACH		850-416-7550	
	Weems Memorials Hospital			Limited		Appalachicola			

UNCLASSIFIED/FOR OFFICIAL USE ONLY

HURRICANE MICHAEL SPINS

CHG 7 CURRENT AS OF: 1100 EDT, 13 OCT 2018

FL85	Baptist Hospital	30-25.77	087-13.88	Open	Yes	1000 W Moreno St, Pensacola, FL		850-434-4011	128.25
						5151 N NORTH NINTH AVENUE			
9FD1	SACRED HEART HOSPITAL	30-28.56	087-12.78	Open				850-416-2369	
	South Baldwin Medical Center	30-25.55	087-41.04	Open		1613 N McKenzie St, Foley, AL 36535		251-949-3400	

LOGISTICS STAGING AREA

Region	County	Site Name	Site Type	Address	Lat	Long	POC	Phone Number
State	SERT	Marianna Municipal Airport	State Logistics Staging Area	3689 Industrial Park Dr, Mariana, FL	30-50.08	085-10.93		
State	SERT	Tallahassee Airport	State Logistics Staging Area	3300 Capital Circ SW, Tallahassee, FL	30-23.73	084-21.00	CW2 Barco	407-319-3501

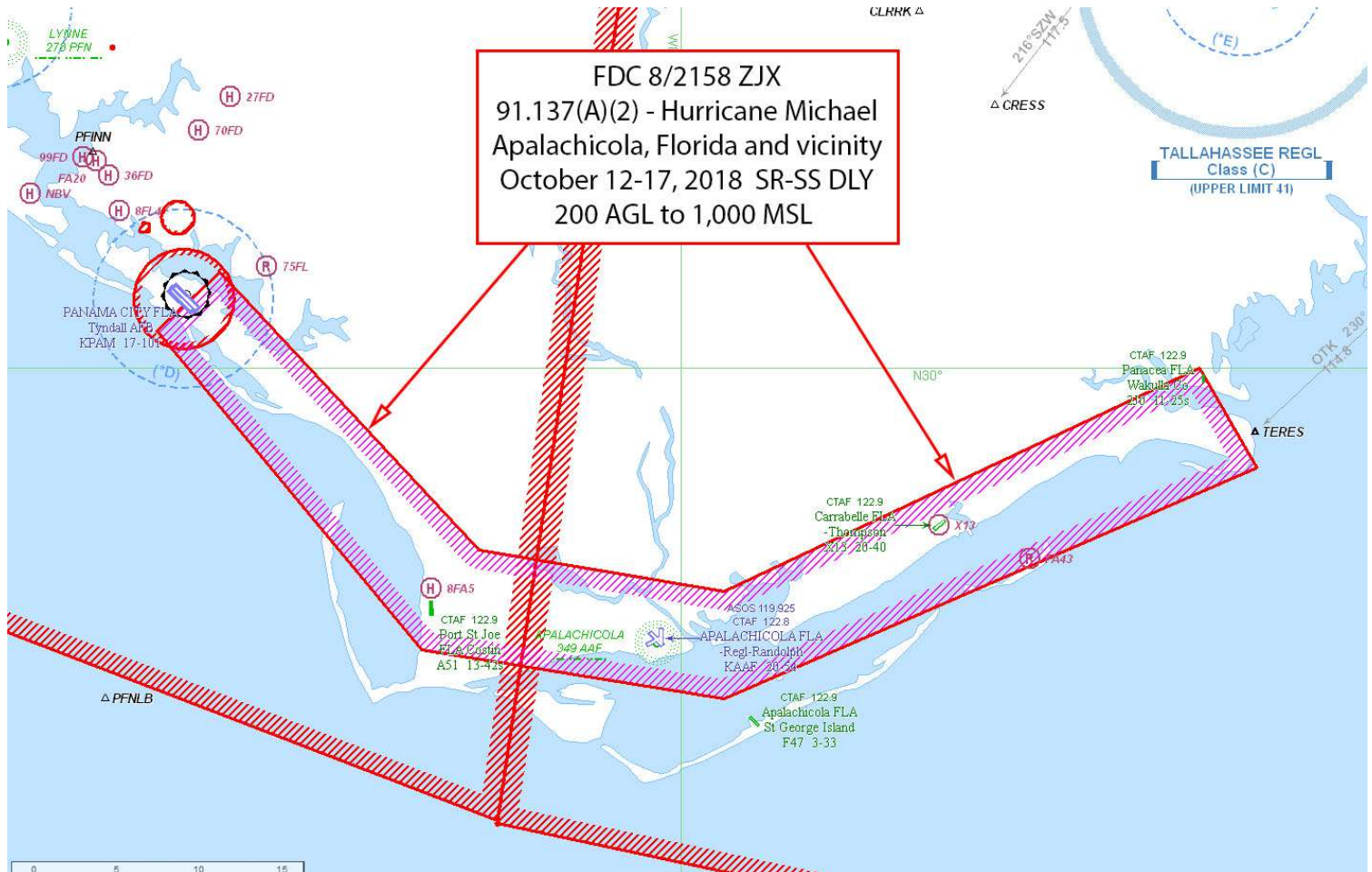
UNCLASSIFIED/FOR OFFICIAL USE ONLY

HURRICANE MICHAEL SPINS

CHG 7 CURRENT AS OF: 1100 EDT, 13 OCT 2018

HURRICANE MICHAEL TFRS

* NOTE: SPECIAL USE AIRSPACE (RESTRICTED/MOA) WITHIN TFR ARE COLD UFN



FDC 8/2158 ZJX FL..AIRSPACE APALACHICOLA, FL..TEMPORARY FLIGHT RESTRICTION.

PURSUANT TO 14 CFR SECTION 91.137(A)(2), TEMPORARY FLIGHT RESTRICTIONS ARE IN EFFECT WITHIN AN AREA DEFINED AS 300545N0853200W (MAI207046.4) TO 294900N0851400W (MAI186058.3) TO 294630N0845700W (SZW211055.5) TO 300000N0842400W (SZW180033.3) TO 295400N0842000W (SZW175039.3) TO 294000N0845700W (SZW208061.1) TO 294300N0851800W (MAI188064.7) TO 300215N0853624W (MAI209051.3) TO

UNCLASSIFIED/FOR OFFICIAL USE ONLY

HURRICANE MICHAEL SPINS

CHG 7 CURRENT AS OF: 1100 EDT, 13 OCT 2018

POINT OF ORIG. **200FT AGL-1000FT MSL. DLY SR-SS EFF 1810121730 (1330 LOCAL 10/12/18) UNTIL 1810172210 (1810 LOCAL 10/17/18)** FOR HURRICANE MICHAEL DISASTER RESPONSE.

THE FLORIDA STATE AIR OPERATIONS BRANCH (FSAOB) TELEPHONE 850-815-4980 OR 850-815-4982 IS IN CHRG OF EMERG RESP ACT. JACKSONVILLE /ZJX/ ARTCC TELEPHONE 904-845-1542 IS THE FAA CDN FACILITY.

ALL ACFT OPS INCLUDING UAS, ARE PROHIBITED EXC FOR THOSE MEETING AT LEAST ONE OF THE FOLLOWING REQUIREMENTS:

A. OPS BY FED, STATE, AND LCL GOV AGENCY OR U.S. MILITARY (INCL NG) IN ACTV SUPPORT OF DISASTER RESP AND UNDER DIRECTION OF APPROPRIATE INCIDENT COMMAND. OPS MAY INCL PUBLIC OR CONTRACTED PVT ACFT CONDUCTING SEARCH AND RESCUE, AIR AMBULANCE, INCIDENT ASSESSMENT, LAW ENFORCEMENT, CRITICAL SUPPLY, AIR EVAC, AND OTHER VITAL FLTS. OPS MUST REQ PRIOR APVL THRU THEIR AGENCY IN-PLACE AOB LNO OR FSAOB.

B. UAS MUST CONTACT THE FAA SYSTEM SUPPORT CENTER (SOSC) AT 202-267-8276 FOR AUTH PRIOR TO STARTING OPS. THE SOSC IS MANAGING UAS ACCESS IN CDN WITH THE FLORIDA STATE AOB.

C. ACFT IS CARRYING LAW ENFORCEMENT OFFICIALS. PILOTS ARE STRONGLY ENCOURAGED TO COORD WITH THE FSAOB PRIOR TO TAKE-OFF TO MAINTAIN SAFETY.

D. ACFT IS OPERATING ON AN ATC APVD IFR FLIGHT PLAN.

E. FLT DRCT TO OR FM AN ARPT WI THE TFR. FLT MUST NOT INTERFERE WITH OR ENDANGER DISASTER RESP AND RCVRY ACT AND MAY NOT BE CONDUCTED FOR OBSERV DISASTER AREA.

F. ACFT IS CARRYING ACCREDITED MEDIA AND, PRIOR TO ENTERING TFR, FILES A FLT PLAN WITH THE APPROPRIATE FAA FACILITY. ACFT MUST OPERATE ABOVE THE ALT USED BY PARTICIPATING AIR MISSIONS.

G. ALL PARTICIPATING ACFT MUST CONTACT THEIR AGENCY IN-PLACE AOB LNO PRIOR TO 1700L DLY FOR NEXT DAY BEACON CODE ASSIGN. ALL ACFT ARE HIGHLY ENCOURAGED TO USE ATC SERV TO THE MAX EXTENT PSBL.

PILOTS AND UAS OPERATORS SHOULD CHECK NOTAMS FREQUENTLY FOR PSBL CHANGES PRIOR TO OPS WI OR NEAR TFR AND AIRSPACE COORDINATION AREAS ESTABLISHED OVER N FL.

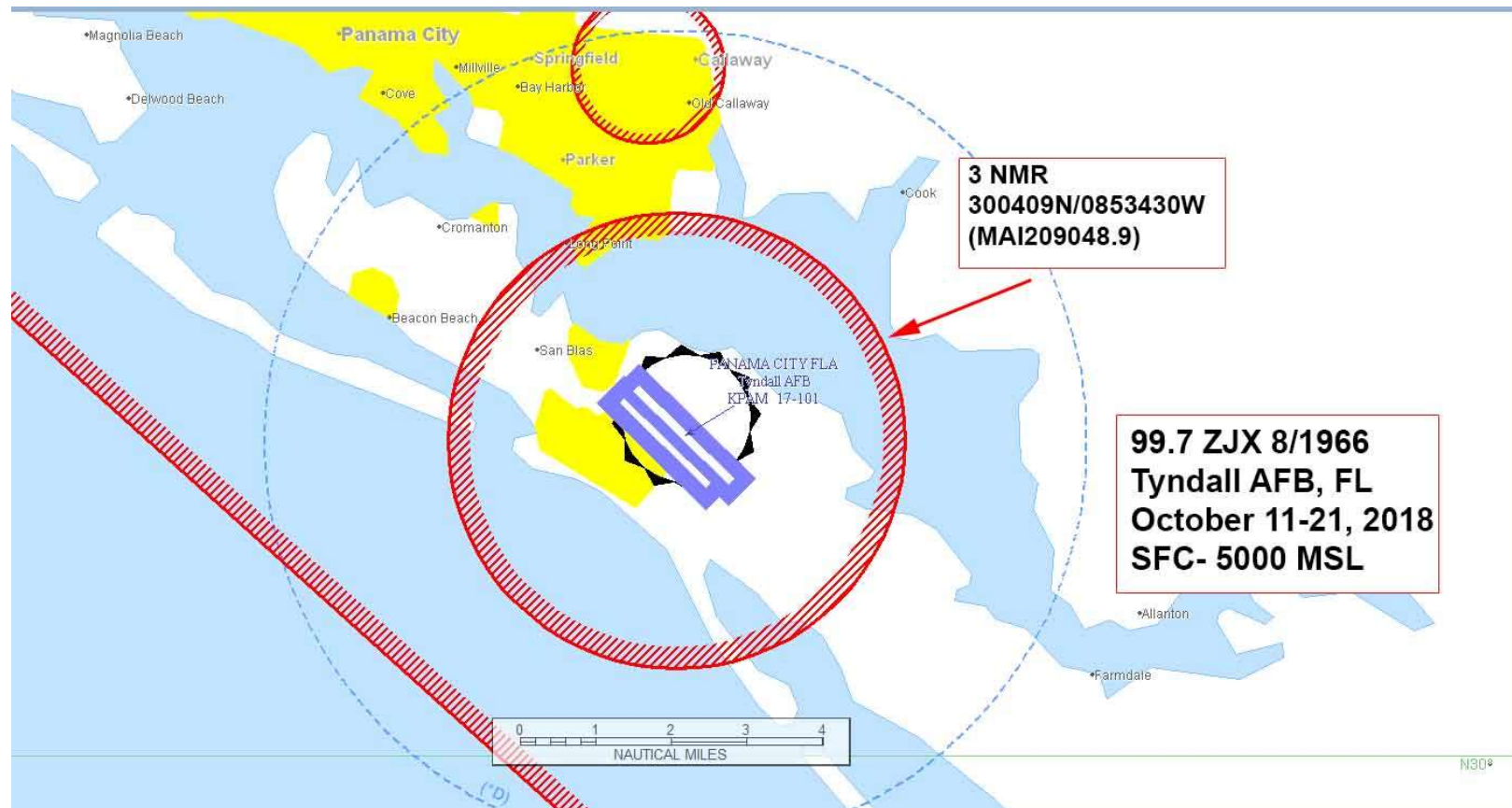
DLY SR-SS

1810121730-1810172210

UNCLASSIFIED/FOR OFFICIAL USE ONLY

HURRICANE MICHAEL SPINS

CHG 7 CURRENT AS OF: 1100 EDT, 13 OCT 2018



IFDC 8/1966 ZJX FL..AIRSPACE TYNDALL AFB, FL..TEMPORARY FLIGHT RESTRICTIONS.

OCTOBER 11-21, 2018 LOCAL. PURSUANT TO 49 USC 40103(B)(3), THE FEDERAL AVIATION ADMINISTRATION (FAA) CLASSIFIES THE AIRSPACE DEFINED IN THIS NOTAM AS 'NATIONAL DEFENSE AIRSPACE'. PILOTS WHO DO NOT ADHERE TO THE FOLLOWING PROCEDURES MAY BE INTERCEPTED, DETAINED AND INTERVIEWED BY LAW ENFORCEMENT/SECURITY PERSONNEL. ANY OF THE FOLLOWING ADDITIONAL ACTIONS MAY ALSO BE TAKEN AGAINST A PILOT WHO DOES NOT COMPLY WITH THE REQUIREMENTS OR ANY SPECIAL INSTRUCTIONS OR PROCEDURES ANNOUNCED IN THIS NOTAM:

A) THE FAA MAY TAKE ADMINISTRATIVE ACTION, INCLUDING IMPOSING CIVIL PENALTIES AND THE SUSPENSION OR REVOCATION OF AIRMEN CERTIFICATES; OR

B) THE UNITED STATES GOVERNMENT MAY PURSUE CRIMINAL CHARGES, INCLUDING CHARGES UNDER TITLE 49 OF THE UNITED STATES CODE, SECTION 46307; OR

C) THE UNITED STATES GOVERNMENT MAY USE DEADLY FORCE AGAINST THE AIRBORNE AIRCRAFT, IF IT IS DETERMINED THAT THE AIRCRAFT POSES AN IMMINENT SECURITY THREAT.

PURSUANT TO TITLE 14 CFR SECTION 99.7, SPECIAL SECURITY

UNCLASSIFIED/FOR OFFICIAL USE ONLY

HURRICANE MICHAEL SPINS

CHG 7 CURRENT AS OF: 1100 EDT, 13 OCT 2018

INSTRUCTIONS, ALL AIRCRAFT FLIGHT OPERATIONS ARE PROHIBITED WITHIN
AN AREA DEFINED AS 3NM RADIUS OF 300409N0853430W (MAI209048.9)
SFC-5000FT MSL
EFFECTIVE 1810120100 UTC (2000 LOCAL 10/11/18) UNTIL 1810212359 UTC
(1859 LOCAL 10/21/18).

EXCEPT AS SPECIFIED BELOW AND/OR UNLESS AUTHORIZED
BY ATC:
LAW ENFORCEMENT, FIREFIGHTING, MEDEVAC/AIR
AMBULANCE, HURRICANE MICHAEL RELIEF AND DEPARTMENT
OF DEFENSE FLIGHTS ARE AUTHORIZED.
1810120100-1810212359

UNCLASSIFIED/FOR OFFICIAL USE ONLY