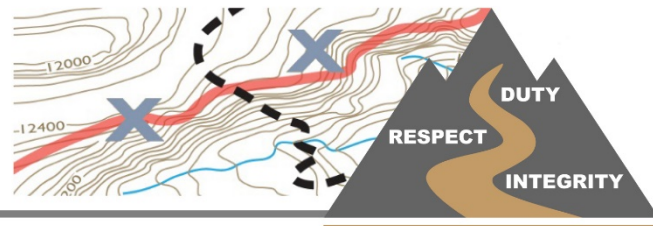


Tactical Decision Games



Wildland Fire Leadership Development Program

INITIAL ATTACK/ATGS – IC INTERACTION FIRE

INITIAL FACILITATOR INFORMATION—NOT TO BE SHARED WITH STUDENTS

Author(s)

Tony Duprey

Target Audience

IC Type 3 & 4, Single Resource Boss, Aerial Firefighters

Training Objective

Given the following scenario, the player (IC & OPS) will: Interact with the ATGS providing incident objectives and priorities, fire landmarks (origin, flanks, etc.); request a plan of attack from the ATGS; advise ATGS of changing priorities. A Report on Conditions may be requested by ECC or Division Chief.

The player (ATGS) will: provide or help provide a plan of attack, clear ground troops from drop paths, order additional aerial resource request through proper channels (AOBD or dispatch), advise AOBD or dispatch of aerial resource changes.

Players should verbally communicate their decisions to the appropriate individuals.

Resources Referenced

- **Single Resource Boss (Player Role) – 1 IC, 1 OPS, 1 ATGS (can be a role player)**
- 5 Type 3 Engines (3-1, 3-5, 3-7, 3-8, 3-9) [STEN 1101C](#)
- 5 Type 1 Engines (1-1, 1-2, etc.) [STEN 1401A](#)
- 2 Dozer (Dozer 4,5) [STDZ 1550K](#)
- 1 Hotshot Crew (Laguna IHC)
- 1 Water Tender (Tender 1)
- 1 Air Attack (Bravo 53)
- 2 Heavy Air Tanker (Tanker 00, 20)
- 1 Helitanker (HT 741)
- 2 Medium helicopters (H-555, Copter 4)
- ** Utilize the strike team or task force leader positions to reduce the amount of players

SCENARIO INFORMATION TO BE SHARED WITH STUDENTS

Facilitator Briefing to Student(s)

You are (select from target audience or resources) out of region on a severity detail in an unfamiliar area. The resources assigned to this area are all from out of the area and have never worked together before. The ordering unit has been experiencing new starts over the past few days.

IC

It is 1130 and you have just been ordered for initial attack. You (selected resource) are first on scene and assume the role of IC. En-route to the fire you observe weather conditions to be 85 degrees, RH 18%, Winds 5 out of the West with gusts to 10. It is now 1200 and you have just arrived on scene to find a 5 acre fire actively burning in heavy fuels (sage, cheat grass, and juniper) right off of a state highway. As you were approaching the fire from the east on East Manhattan Drive, you noticed a group of homes one ridge and one slope reversal away from the fire.

ATGS

It is 11:30 and you have been ordered for initial attack. You arrive on scene as the IC is finishing up his Report on Conditions. You hear his ROC on the dispatch frequency.

Take 5 minutes to decide your course of action and prepare any communication contacts you think are necessary.

ADDITIONAL INFORMATION FOR FACILITATOR ONLY

Facilitator “Murphy’s Law” Suggestions

The “Murphy’s Law” suggestions listed below can be added as “What ifs” at any time during the scenario to raise the stress level of the leader. You can also use one of your own:

- Power lines are down between resources.
- Fire burns through the retardant lines / retardant not effective
- Helicopter pickles its bucket on drop run striking an engine
- Propane tank is receiving direct flame impingement.
- Ember spots into structure and roof is involved.
- Water system failure, hydrants have no pressure.
- Panicked public blocking traffic or refuses to evacuate.
- Hazardous materials involved.
- Vehicle accident involving private vehicle and an engine.
- Wind shifts and/or increases.

Facilitator's Notes

This TDGS should focus on the IC, Single Resource Boss, and/or aerial firefighter level of decision making, interaction and communication. In the scenario, the players have been presented with moderate fire conditions, multiple new starts in the area and a threat to approximately a dozen homes. There is further pressure as the decision maker assumes the role of IC and he/she is not familiar with the local area. The IC must provide a size up and decide between an offensive strategy, a defensive strategy, or some combination thereof before assigning resources. Communication and interaction by the ATGS and the IC to come up with a plan for the aerial resources is needed. ATGS must provide the IC with a plan (tactics) of action for the aerial resources that fit the IC's strategy.

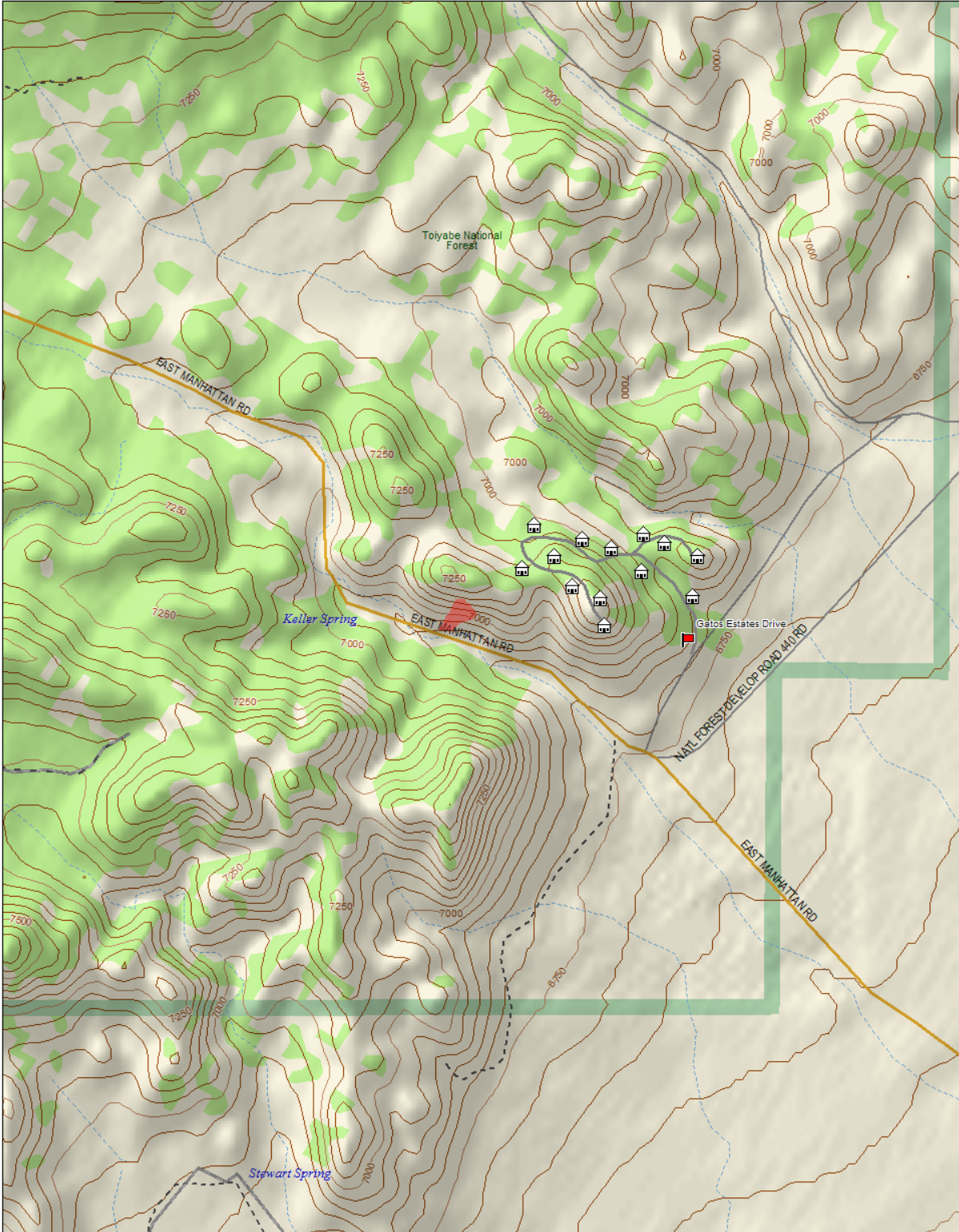
If desired, keep the scenario moving with a fresh "hot seat" person. Have dispatch send a chief officer (BC) that is OPS qualified to take over as Operations. Move IC into a "Command" role meeting with the Chief and Assistant Chief to facilitate a change of command to a Joint Command structure with two adjoining agencies.

After Action Review

Conduct an AAR with focus on the training objective. Use the AAR format found in the Incident Response Pocket Guide to facilitate the AAR. There are four basic questions in the AAR.

1. What was planned?
2. What actually happened?
3. Why did it happen?
4. What can we do next time?

TDGS shouldn't have a single solution, keep the focus of the AAR on what was done and why.



Data use subject to license.
© 2004 DeLorme. Topo USA® 5.0.
www.delorme.com

