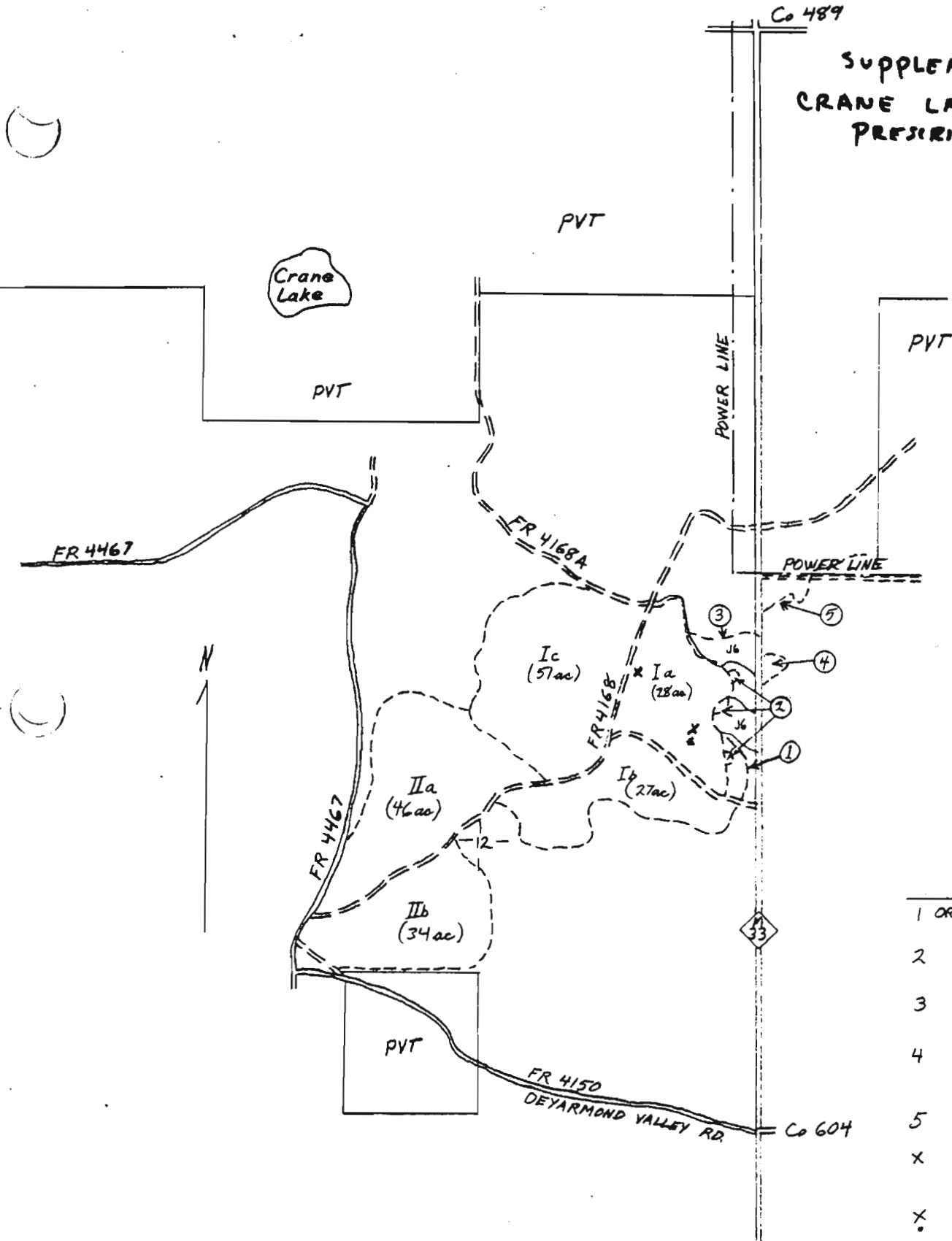


SUPPLEMENTAL MAP,
CRANE LAKE
PRESCRIBED BURN



- KEY
- 1 ORIGINAL DOUBLE FLOW LINE (SPRING 79)
 - 2 SPOT FIRES WITH CONTROL LINES (SIX SPOT FIRES)
 - 3 FLOW LINE TO CONTAIN ESCAPE (SPOT FIRE #7)
 - 4 1st SPOT ACROSS M33 WITH DOUBLE FLOW LINE
 - 5 START OF LAST FLOW LINE
 - X LOCATION WHERE S-S STALLED
 - LOCATION WHERE S-S HUNG UP ON STUMP

SCALE: 4 INCH = 1 MILE
DATE 5/29/80

[Handwritten signature]

Stand 3

MACK LAKE FIRE

FIRE ORIGIN
SCALE: 1" = 290'

spot E2

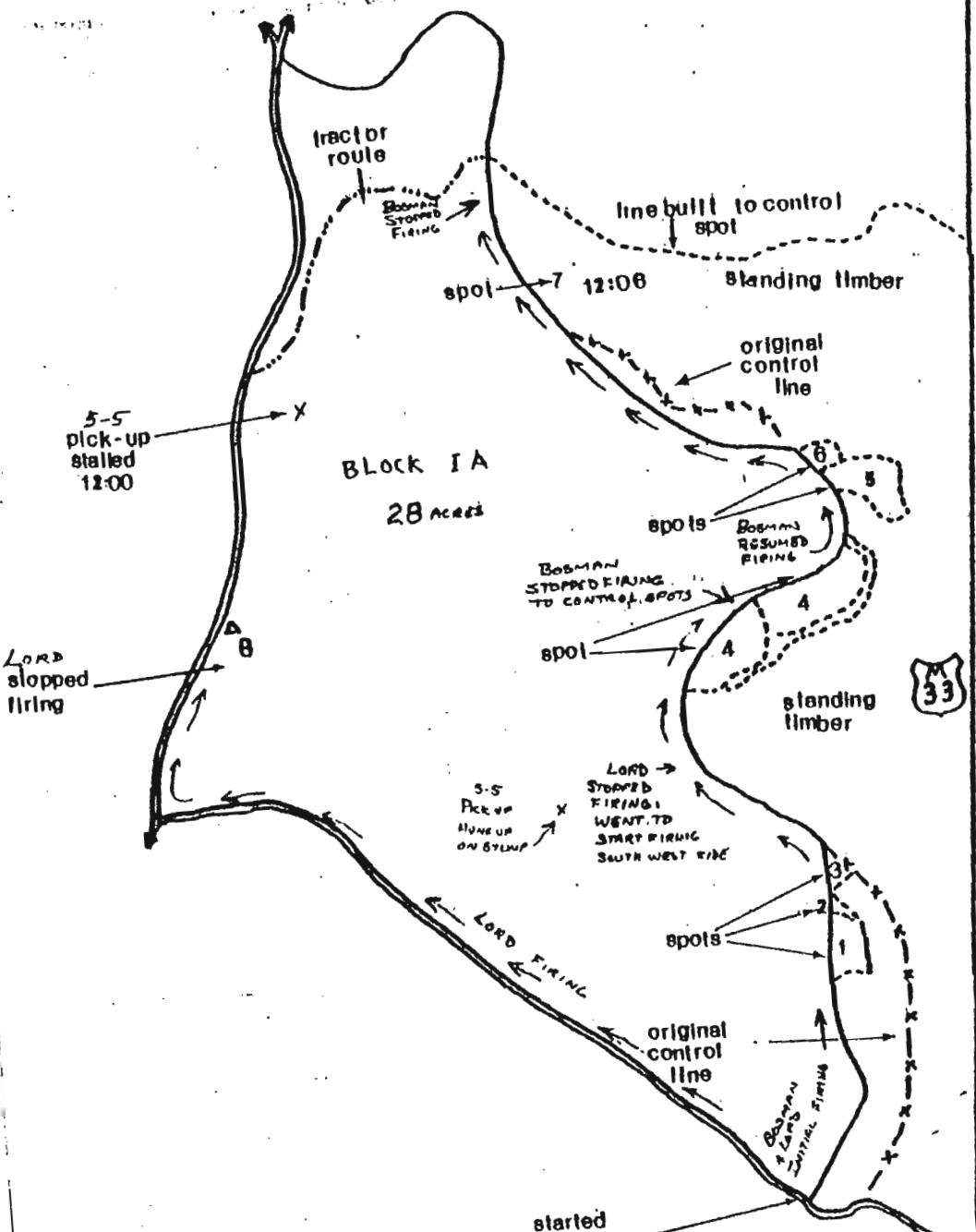
E37

spot E1

Stand 2



- UNIMPROVED ROADS
- CONTROL BURN FLOW LINE
- SPOT FIRE FLOW LINES
- OLD CONTROL FLOW LINE
- TRACTOR TRAIL
- MOTORCYCLE TRAIL
- PROFILE LINE TERMINALS

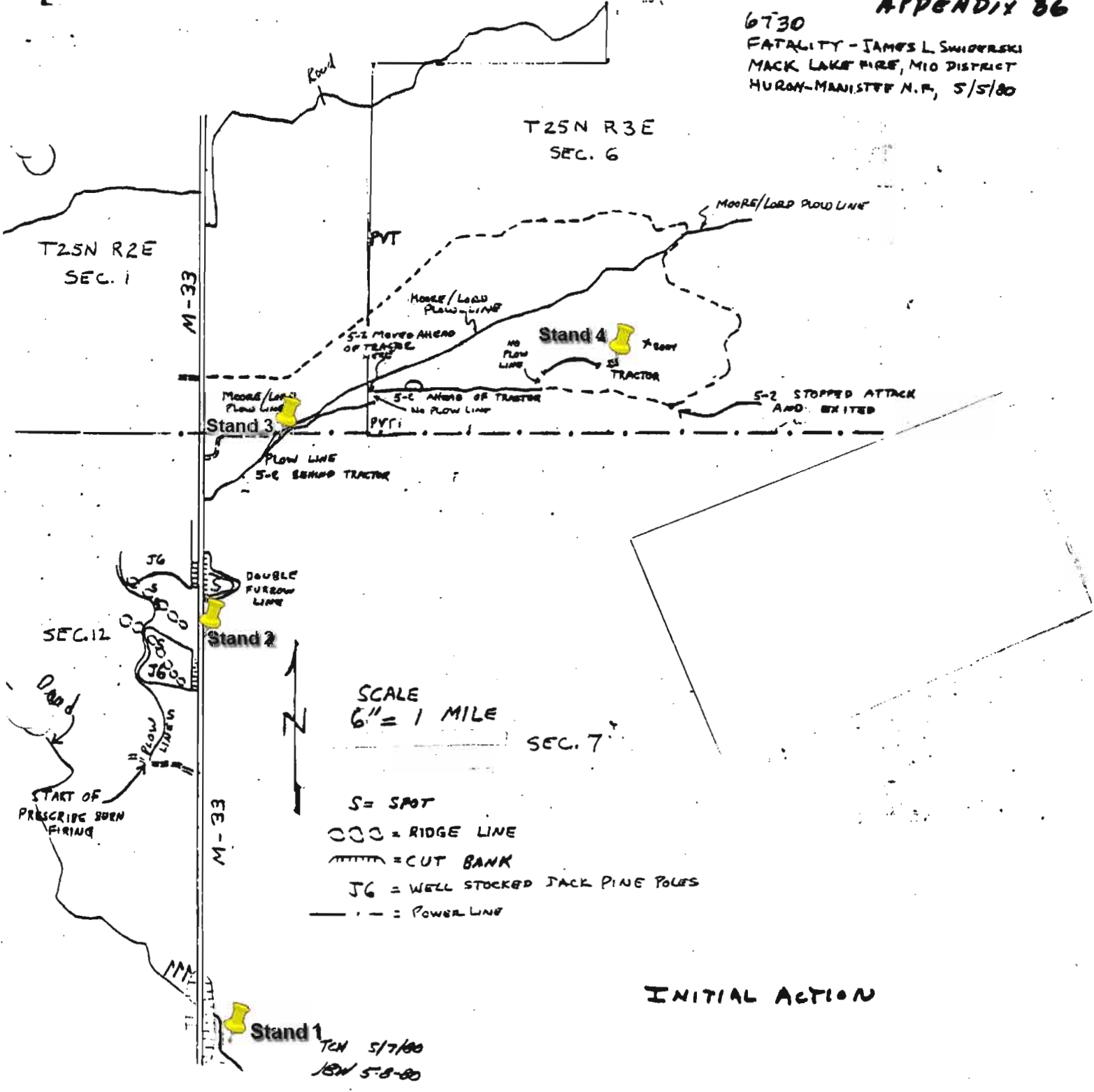


J. PULLIN D. REFF

started firing 10:28

Stand 1

6730
 FATALITY - JAMES L SWIDORSKI
 MACK LAKE FIRE, MID DISTRICT
 HURON-MANISTEE N.F., 5/5/80



INITIAL ACTION

T25N R3E S6

MAY 5, 1980

APPENDIX B7



Mt TOMI ROAD

JAMES LEE SWIDERSKI

POWER LINE
1 mile south
Co. Rd. 489
ZIMOWSKI ROAD.

HARD HAT

POCKET WATCH

WALLET

GLASSES

JOHN DEERE
TRACTOR PLOW
350

276'

FURROW FROM PLOW

110'

507'

1/2 MILE
POWER LINE

TRL. ROAD

50'

JAMES R. WILLETT
OSCODA CO. SHERIFF DEPT

