

VOLPAR

VOLPAR

Accessories Required For Smokejumping:

Primary Vertical Anchor
& Floor Platform: MEDC-747- Primary Vertical Static-line Anchor
STC Strength: 2,000 pounds
STC #: SA1599NM

Secondary Horizontal Anchor: MEDC-758- Volpar Horizontal Anchor Track
STC Strength: 750 pounds
STC #: SA2740NM

Jump Step & Attachment: MEDC-799- Volpar Step
MEDC-794- Universal Step Strut

United States of America
Department of Transportation — Federal Aviation Administration
Supplemental Type Certificate

Number SA1599NM

This certificate, issued to United States Forest Service
MEDC, Building #1
Missoula, Montana 59801

certifies that the change in the type design for the following product with the limitations and conditions therefor as specified hereon meets the airworthiness requirements of Part 3 of the Civil Air Regulations.

Original Product — Type Certificate Number: T.C. 765

Make: Beech

Model: H18 as modified by Volpar BE8T conversion

Description of Type Design Change:

Installation of static-line anchor-cable in accordance with Federal Aviation Administration (FAA) sealed Drawing Number MEDC-747 dated August 1984, FAA approved January 2, 1985, or subsequent approved revisions.

Limitations and Conditions:

This approval limited to Volpar BE8T conversions. This approval should not be extended to other aircraft of this model on which other previously approved modifications are incorporated unless it is determined that the interrelationship between this change and any other previously approved modification will introduce no adverse effect upon the airworthiness of the aircraft.

This certificate and the supporting data which is the basis for approval shall remain in effect until surrendered, suspended, revoked, or a termination date is otherwise established by the Administrator of the Federal Aviation Administration.

Date of application: June 19, 1984

Date issued:

Date of issuance: January 7, 1985

Date amended:



By direction of the Administrator

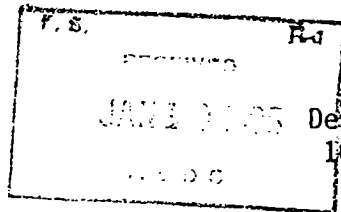
Woodford R. Boyce
Woodford R. Boyce, (Signature) Manager
Denver Aircraft Certification Office
Northwest Mountain Region, Aurora, Colorado
(Title)

Any alteration of this certificate is punishable by a fine of not exceeding \$1,000, or imprisonment not exceeding 3 years, or both.

This certificate may be transferred in accordance with FAR 21.47.



U.S. Department
of Transportation
**Federal Aviation
Administration**



NORTHWEST MOUNTAIN REGION
Denver Aircraft Certification Office
10455 East 25th Avenue - Suite 307
Aurora, Colorado 80010
(303) 330-5575 or 5578

JAN 7 1985

Mr. Lee I. Northcutt, Director
Missoula Equipment Development Center, USFS
Building #1 - Fort Missoula
Missoula, Montana 59801

Dear Mr. Northcutt:

Project No. A1093NMD-S

We have received and reviewed your revised data received by us on December 28, 1984.

With these data, the conformity inspection and test results of September 26, 1984, performed in Anchorage, Alaska, you have demonstrated compliance with the applicable certification regulations. Accordingly, we have enclosed Supplemental Type Certificate (STC) SA1599NM, installing static-line vertical anchor cable in the Volpar BEBT conversion of the Beech H18 series aircraft, and Federal Aviation Administration (FAA) sealed copy of your Top Drawing MEDC 747.

This STC is official FAA approval of your installation and may be used to authorize identical installations on other aircraft of the same model, subject to the limitations noted on the certificate. It may be transferred or otherwise made available to another party by means of a licensee arrangement in accordance with Federal Aviation Regulations (FAR) 21.47. You are requested to advise this office within 30 days after the transfer when you transfer or grant licensee rights to the STC in order that we may take the necessary recording or reissuance action.

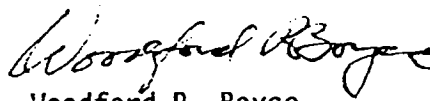
As recipient of this approval, except as provided in FAR 21.3(d), you are required to report any failure, malfunction, or defect in any product or part manufactured by you that you have determined has resulted or could result in any of the occurrences listed in FAR Part 21.3(c). The report should be communicated initially by telephone to the Manager, Denver Aircraft Certification Office, telephone number (303) 340-5575, within 24 hours after it has been determined that the failure has occurred. In addition, written notification to the Manager, ANM-170D, at the above address is required. FAA Form 8330-2 (Malfunction or Defect Report) or any other appropriate format is acceptable in transmitting the required details.



Edward Warren: First American Aloft

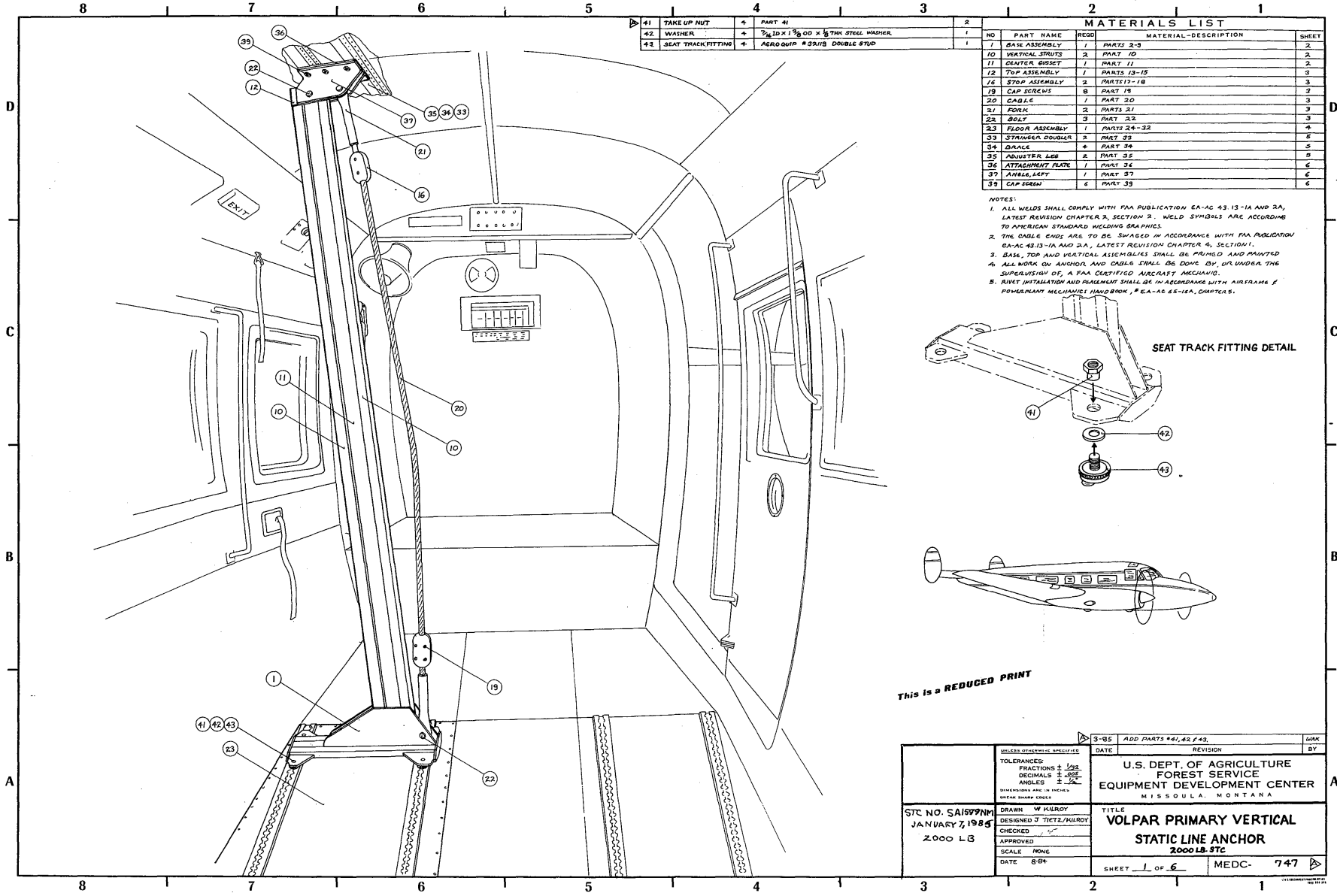
If you plan to manufacture replacement or modification parts for sale in conformance with approved data listed on the Certificate, you are required to comply with FAR 21.303. A Parts Manufacturer Approval (PMA) may be issued under the provisions of FAR 21.303(d) when you submit a statement certifying that you have established a fabrication inspection system as required by FAR 21.303(h). The identification requirements for parts produced under a PMA are in FAR 45.15. Your statement may be in letter form, with a reference to the STC number, and should be addressed to: Federal Aviation Administration, Denver Aircraft Certification Office, 10455 E. 25th Avenue, Suite 307, Aurora, Colorado 80012.

Sincerely,



Woodford R. Boyce
Manager

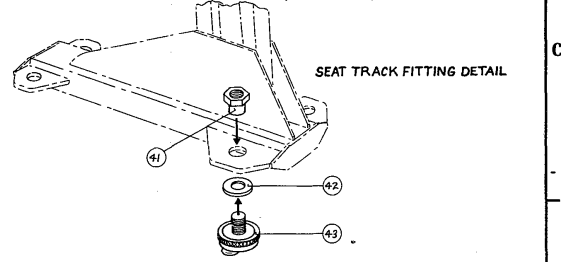
Enclosures



41	TAKE UP NUT	+	PART 41	1	2
42	WASHER	+	3/16 ID x 1 3/8 OD x 1/8 THK STEEL WASHER	1	1
43	SEAT TRACK FITTING	+	ABROQUIP #33119 DOUBLE STUD	1	1

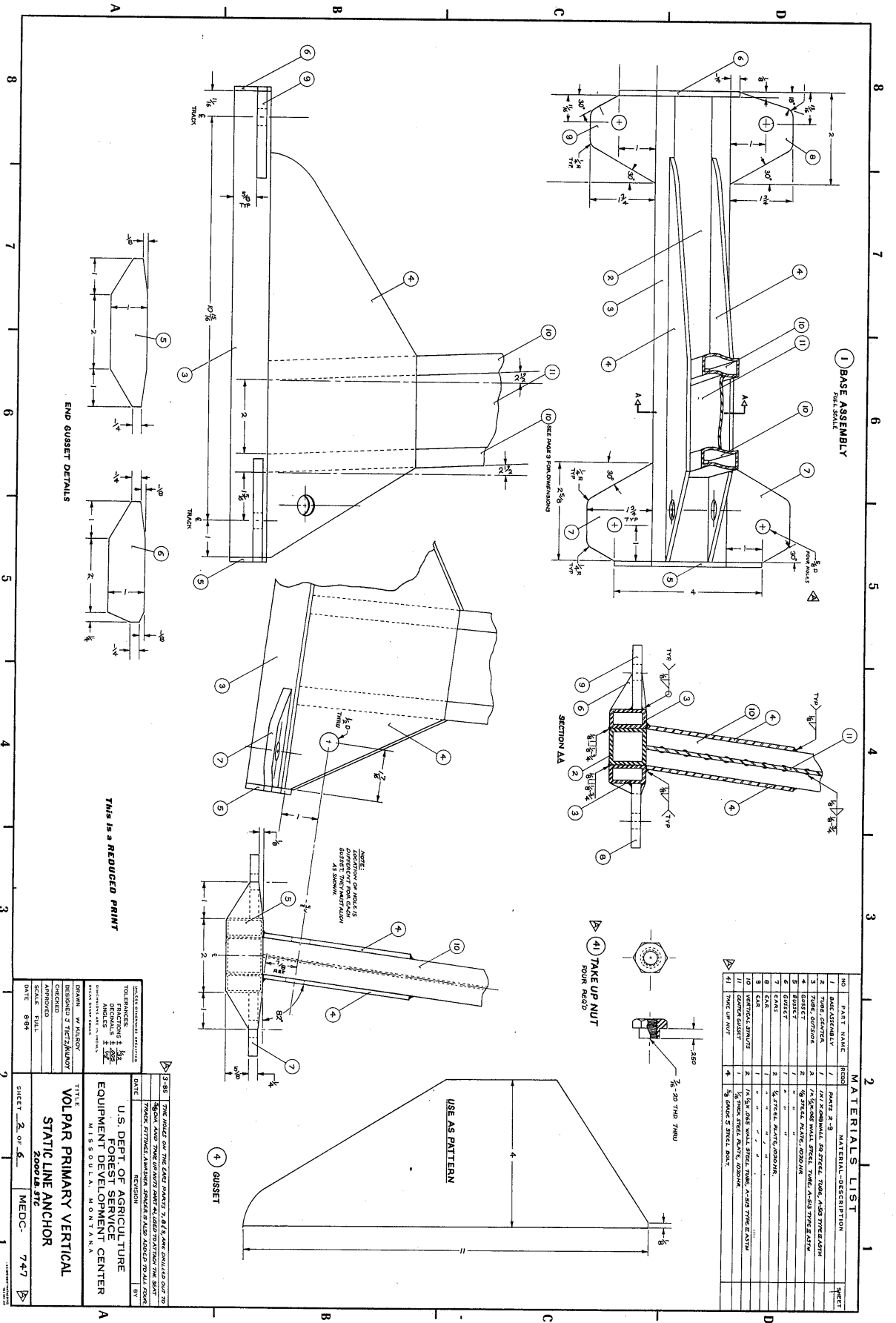
MATERIALS LIST					
NO	PART NAME	REQD	MATERIAL-DESCRIPTION		SHEET
1	BASE ASSEMBLY	1	PARTS 2-3		2
10	VERTICAL STRUTS	2	PART 10		2
11	CENTER ROCKET	1	PART 11		2
12	TOP ASSEMBLY	1	PARTS 13-15		3
16	STOP ASSEMBLY	2	PARTS 17-18		3
19	CAP SCREWS	8	PART 19		3
20	CABLE	1	PART 20		3
21	ROCK	2	PARTS 21		3
22	BOLT	3	PART 22		3
23	FLOOR ASSEMBLY	1	PARTS 24-32		4
33	STRANGER DOUGLER	2	PART 33		5
34	SHACK	4	PART 34		5
35	ADJUSTER LEG	2	PART 35		9
36	ATTACHMENT PLATE	1	PART 36		6
37	ANGLE, LEFT	1	PART 37		6
38	CAP SCREW	6	PART 38		6

- NOTES:
1. ALL WELDS SHALL COMPLY WITH FAA PUBLICATION EA-AC 43.13-1A AND 2A, LATEST REVISION CHAPTER 2, SECTION 2. WELD SYMBOLS ARE ACCORDING TO AMERICAN STANDARD WELDING GRAPHICS.
 2. THE CABLE ENDS ARE TO BE SWAGED IN ACCORDANCE WITH FAA PUBLICATION EA-AC 43.13-1A AND 2A, LATEST REVISION CHAPTER 4, SECTION 1.
 3. BASE, TOP AND VERTICAL ASSEMBLIES SHALL BE PRIMED AND PAINTED.
 4. ALL WORK ON ANCHOR AND CABLE SHALL BE DONE BY, OR UNDER THE SUPERVISION OF, A FAA CERTIFIED AIRCRAFT MECHANIC.
 5. RIVET INSTALLATION AND PLACEMENT SHALL BE IN ACCORDANCE WITH AIRFRAME & POWERPLANT MECHANIC HANDBOOK, # EA-AC 65-15A, CHAPTER 5.

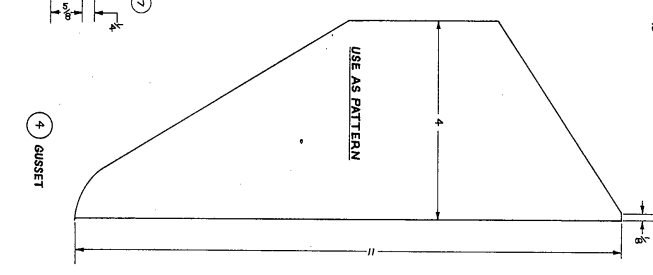
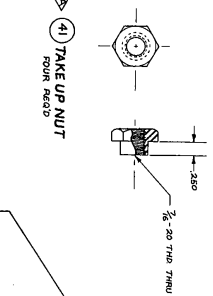
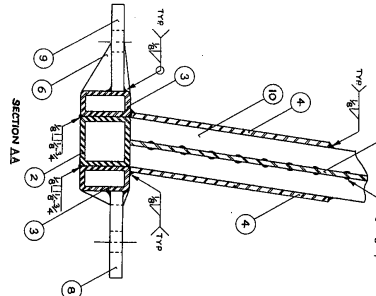


This is a REDUCED PRINT

TOLERANCES: FRACTIONS ± 1/32 DECIMALS ± .005 ANGLES ± 5' DIMENSIONS ARE IN INCHES UNLESS SHOWN OTHERWISE	DATE 8-84	REVISION	DWG BY
	U.S. DEPT. OF AGRICULTURE FOREST SERVICE EQUIPMENT DEVELOPMENT CENTER MISSOULA, MONTANA		
SR. NO. SA1597NH JANUARY 7, 1985 2000 LB	TITLE VOLPAR PRIMARY VERTICAL STATIC LINE ANCHOR 2000 LB STC		SHEET 1 OF 6
DRAWN W. KILROY DESIGNED J. TIEZ/KILROY CHECKED _____ APPROVED _____ SCALE NONE DATE 8-84	MEDC- 747		747



1 BASE ASSEMBLY
SEE SHEET

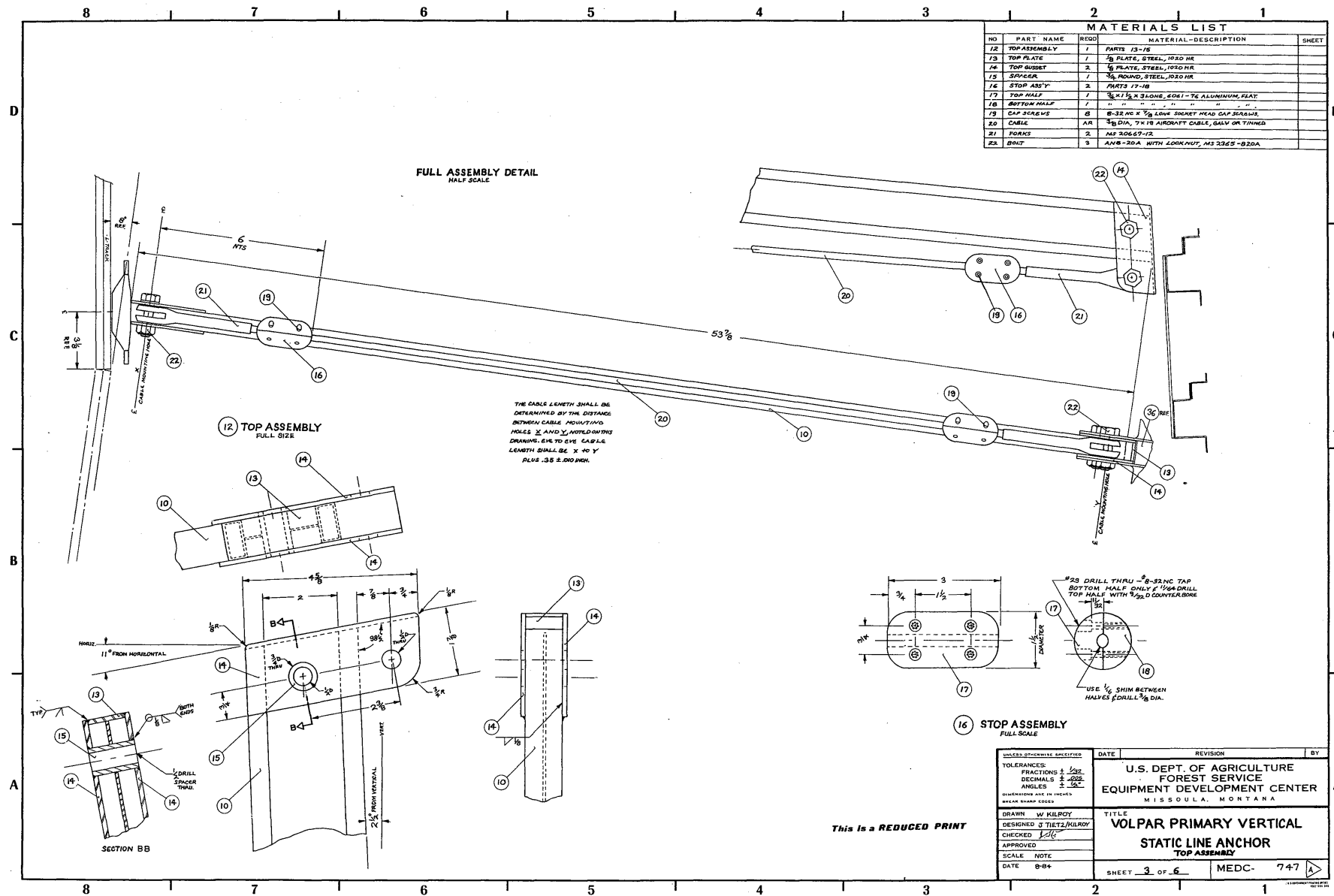


2 MATERIALS LIST

NO	PART NAME	QTY	MATERIAL-DESCRIPTION	SHEET
1	BASE ASSEMBLY	1	SEE SHEET 1	1
2	ANGLE IRON	1	ANGLE 2-3/8" X 2-3/8" X 1/8" THIN GALV. STEEL	1
3	WELD ROD	1	1/8" DIA. E6010	1
4	TAKE UP NUT	1	1/2" DIA. 6-32 UNF. 304 STAINLESS STEEL	1
5	WASHER	1	1/2" DIA. 6-32 UNF. 304 STAINLESS STEEL	1
6	WASHER	1	1/2" DIA. 6-32 UNF. 304 STAINLESS STEEL	1
7	WASHER	1	1/2" DIA. 6-32 UNF. 304 STAINLESS STEEL	1
8	WASHER	1	1/2" DIA. 6-32 UNF. 304 STAINLESS STEEL	1
9	WASHER	1	1/2" DIA. 6-32 UNF. 304 STAINLESS STEEL	1
10	WASHER	1	1/2" DIA. 6-32 UNF. 304 STAINLESS STEEL	1
11	WASHER	1	1/2" DIA. 6-32 UNF. 304 STAINLESS STEEL	1

This is a REDUCED PRINT

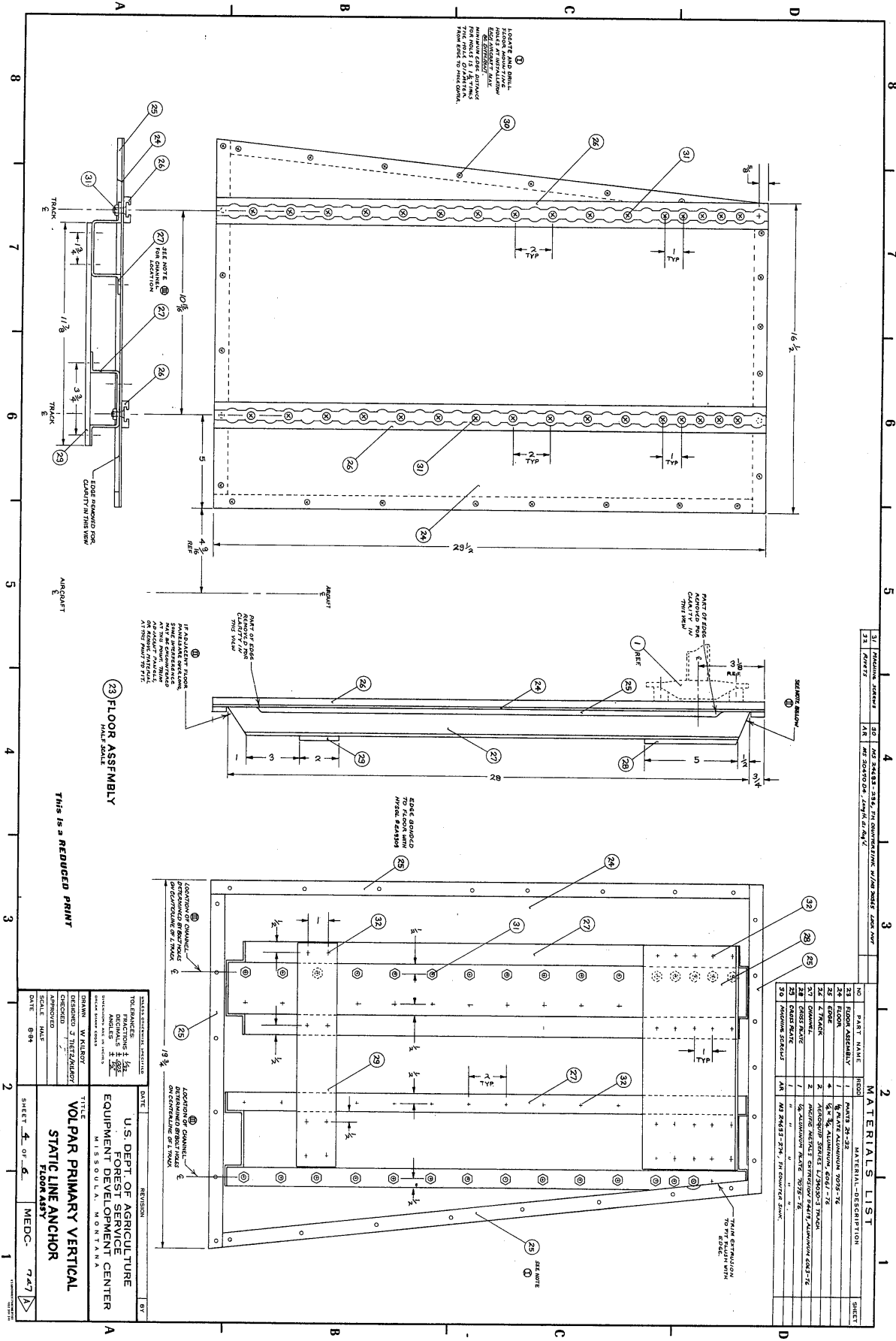
DESIGNED BY	W. HILSON
CHECKED BY	J. HILSON
DATE	8-8-58
TITLE	VOLPAR PRIMARY VERTICAL STATIC LINE ANCHOR
PROJECT	U.S. DEPT. OF AGRICULTURE FOREST SERVICE EQUIPMENT DEVELOPMENT CENTER MISSOURI, L. MONTANA
SCALE	2 OF 5
DATE	8-8-58
APPROVED	MECC-747



MATERIALS LIST			
NO	PART NAME	REQD	MATERIAL-DESCRIPTION
12	TOP ASSEMBLY	1	PARTS 13-15
13	TOP PLATE	1	1/8" PLATE, STEEL, 10X0 NR
14	TOP GUSSET	2	1/8" PLATE, STEEL, 10X0 NR
15	SPACER	1	3/8" ROUND, STEEL, 10X0 NR
16	STOP ASSEMBLY	2	PARTS 17-19
17	TOP HALF	1	3/8" X 1 1/2" X 3/16" ALUMINUM, FLAT
18	BOTTOM HALF	1	3/8" X 1 1/2" X 3/16" ALUMINUM, FLAT
19	CAP SCREWS	8	8-32 NC X 1/2" LOWE SOCKET HEAD CAP SCREWS
20	CABLE	AR	3/8" DIA, 7 X 19 AIRCRAFT CABLE, GALV OR TINNED
21	FORKS	2	MS 30667-12
22	BUSH	8	AN8-20A WITH LOCKWOT, MS 3365-B20A

UNLESS OTHERWISE SPECIFIED		DATE	REVISION	BY
TOLERANCES:				
FRACTIONS ± 1/32"				
DECIMALS ± .005"				
ANGLES ± 1/2°				
DIMENSIONS ARE IN INCHES				
UNLESS SHOWN OTHERWISE				
DRAWN W. KILROY		U.S. DEPT. OF AGRICULTURE		
DESIGNED J. TIETZ/KILROY		FOREST SERVICE		
CHECKED J. TIETZ		EQUIPMENT DEVELOPMENT CENTER		
APPROVED		MISSOULA, MONTANA		
SCALE NOTE		TITLE		
DATE 8-64		VOLPAR PRIMARY VERTICAL		
		STATIC LINE ANCHOR		
		TOP ASSEMBLY		
		SHEET 3 OF 6		MEDC- 747

This is a REDUCED PRINT



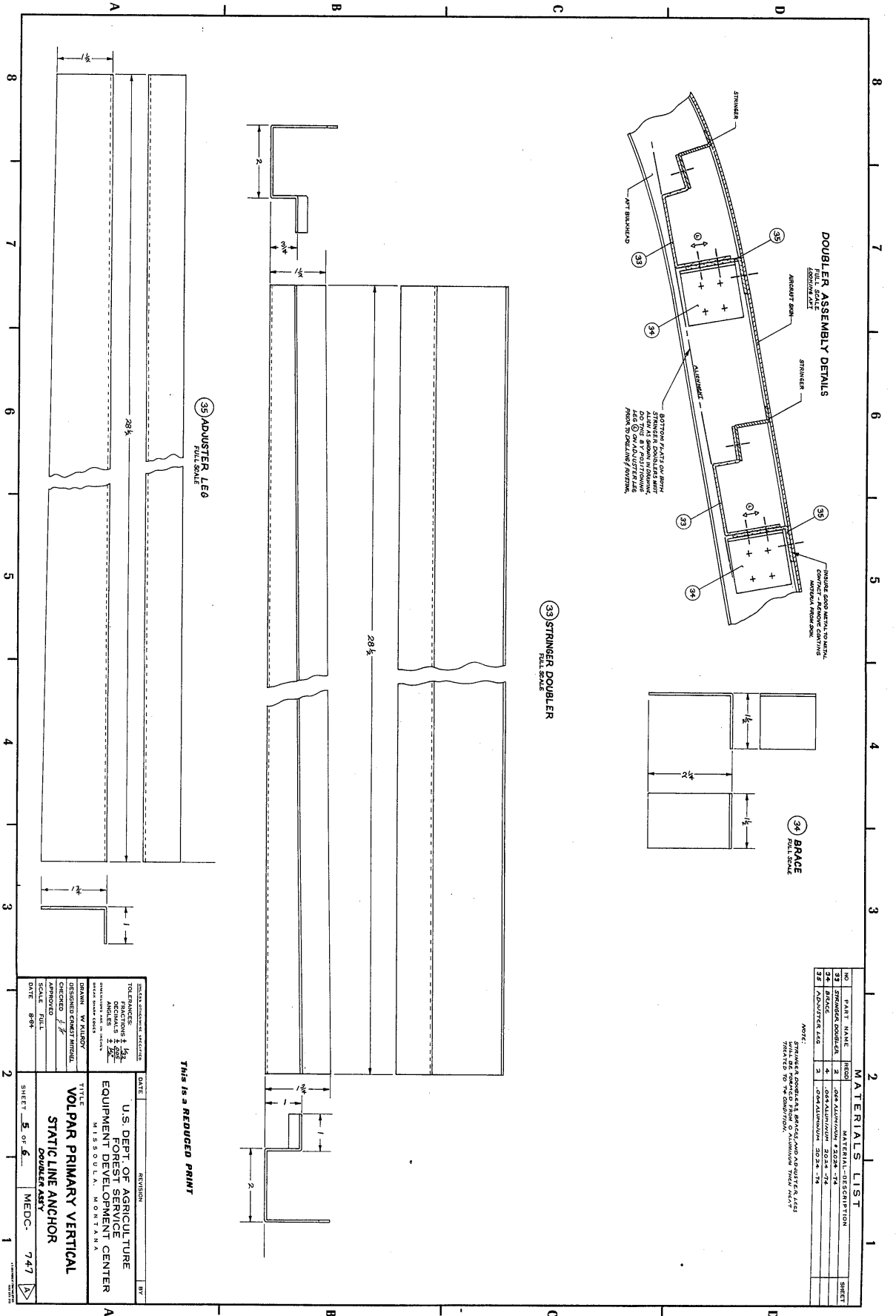
MATERIALS LIST

NO.	PART NAME	QUANTITY	UNIT	REVISION
23	FLOOR ASSEMBLY	1	EA	
24	FORM	1	EA	
25	WOOD	1	EA	
26	WOOD	1	EA	
27	WOOD	1	EA	
28	WOOD	1	EA	
29	WOOD	1	EA	
30	WOOD	1	EA	
31	WOOD	1	EA	
32	WOOD	1	EA	

DESIGNED BY	W. F. WILSON
CHECKED BY	J. W. WILSON
SCALE	AS SHOWN
DATE	8/84
U.S. DEPT. OF AGRICULTURE FOREST SERVICE MISSOURI FOREST EXPERIMENT STATION MOUNTAIN VIEW, MISSOURI	
VOLPAR PRIMARY VERTICAL STATIC LINE ANCHOR FLOOR ASSEMBLY	
SHEET	4 OF 4
DATE	7/77

THIS IS A REDUCED PRINT

8 7 6 5 4 3 2 1



MATERIALS LIST

NO.	PART NAME	QTY.	DESCRIPTION	SHEET
33	STRINGER DOUBLER	2	6063 ALUMINUM 4.5000 74	1
34	BRACE	2	6063 ALUMINUM 4.5000 74	1
35	ADJUSTER LEG	2	6063 ALUMINUM 4.5000 74	1

NOTE: MATERIALS SPECIFIED IN THIS DRAWING ARE TO BE USED UNLESS OTHERWISE SPECIFIED BY THE DRAWING. MATERIALS SHALL BE SUPPLIED BY THE MANUFACTURER OF THE EQUIPMENT TO WHICH THIS DRAWING APPLIES.

This is a REDUCED PRINT

DATE	REVISION	BY

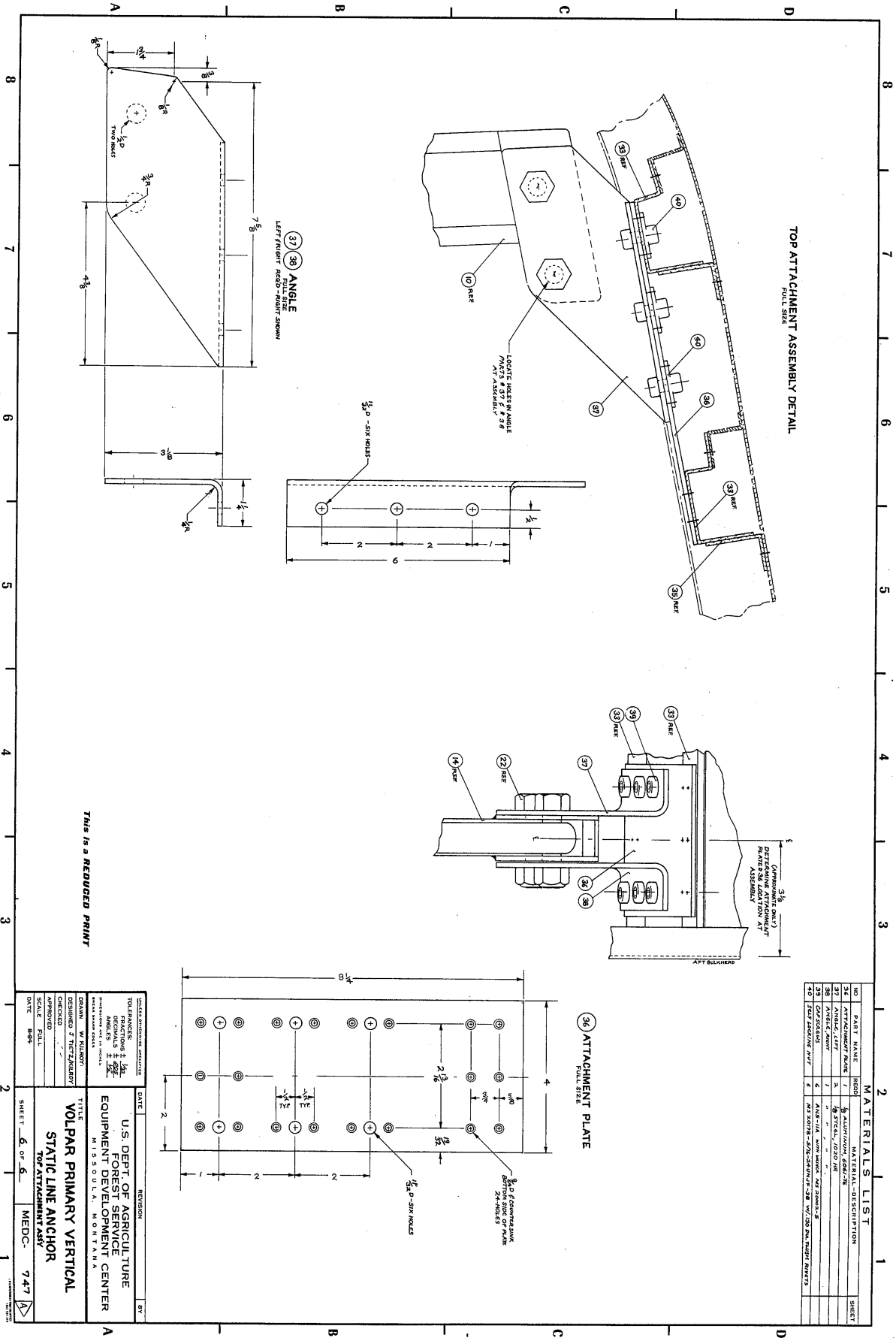
DESIGNED BY: *[Signature]*
 DRAWN BY: *[Signature]*
 CHECKED BY: *[Signature]*
 DATE: 8-84

TOLERANCES: DIMENSIONS: ±.005
 HOLE DIA: ±.005
 HOLE POSITION: ±.010
 HOLE SQUARENESS: ±.010

U.S. DEPT. OF AGRICULTURE
 FOREST SERVICE
 EQUIPMENT DEVELOPMENT CENTER
 MISSOULA, MONTANA

TITLE: VOLPAR PRIMARY VERTICAL
 STATIC LINE ANCHOR
 DOUBLER ASSEMBLY

SHEET 5 OF 6 MEDC-747



TOP ATTACHMENT ASSEMBLY DETAIL
FULL SIZE

36 ATTACHMENT PLATE
FULL SIZE

MATERIALS LIST

NO	PART NAME	QTY	MATERIAL DESCRIPTION	SHEET
36	ATTACHMENT PLATE	1	1/2" ALUMINUM PLATE	1
37	ANGLE LEFT	2	1/2" X 1/2" X 1/8" ANGLE	1
38	ANGLE RIGHT	2	1/2" X 1/2" X 1/8" ANGLE	1
39	SCREW	4	1/4" X 1/2" SCREW	1
40	WASHER	4	1/4" X 1/2" WASHER	1
41	NUT	4	1/4" NUT	1
42	SPACER	4	1/4" X 1/2" SPACER	1
43	SPACER	4	1/4" X 1/2" SPACER	1
44	SPACER	4	1/4" X 1/2" SPACER	1
45	SPACER	4	1/4" X 1/2" SPACER	1
46	SPACER	4	1/4" X 1/2" SPACER	1
47	SPACER	4	1/4" X 1/2" SPACER	1
48	SPACER	4	1/4" X 1/2" SPACER	1
49	SPACER	4	1/4" X 1/2" SPACER	1
50	SPACER	4	1/4" X 1/2" SPACER	1
51	SPACER	4	1/4" X 1/2" SPACER	1
52	SPACER	4	1/4" X 1/2" SPACER	1
53	SPACER	4	1/4" X 1/2" SPACER	1
54	SPACER	4	1/4" X 1/2" SPACER	1
55	SPACER	4	1/4" X 1/2" SPACER	1
56	SPACER	4	1/4" X 1/2" SPACER	1
57	SPACER	4	1/4" X 1/2" SPACER	1
58	SPACER	4	1/4" X 1/2" SPACER	1
59	SPACER	4	1/4" X 1/2" SPACER	1
60	SPACER	4	1/4" X 1/2" SPACER	1
61	SPACER	4	1/4" X 1/2" SPACER	1
62	SPACER	4	1/4" X 1/2" SPACER	1
63	SPACER	4	1/4" X 1/2" SPACER	1
64	SPACER	4	1/4" X 1/2" SPACER	1
65	SPACER	4	1/4" X 1/2" SPACER	1
66	SPACER	4	1/4" X 1/2" SPACER	1
67	SPACER	4	1/4" X 1/2" SPACER	1
68	SPACER	4	1/4" X 1/2" SPACER	1
69	SPACER	4	1/4" X 1/2" SPACER	1
70	SPACER	4	1/4" X 1/2" SPACER	1
71	SPACER	4	1/4" X 1/2" SPACER	1
72	SPACER	4	1/4" X 1/2" SPACER	1
73	SPACER	4	1/4" X 1/2" SPACER	1
74	SPACER	4	1/4" X 1/2" SPACER	1
75	SPACER	4	1/4" X 1/2" SPACER	1
76	SPACER	4	1/4" X 1/2" SPACER	1
77	SPACER	4	1/4" X 1/2" SPACER	1
78	SPACER	4	1/4" X 1/2" SPACER	1
79	SPACER	4	1/4" X 1/2" SPACER	1
80	SPACER	4	1/4" X 1/2" SPACER	1
81	SPACER	4	1/4" X 1/2" SPACER	1
82	SPACER	4	1/4" X 1/2" SPACER	1
83	SPACER	4	1/4" X 1/2" SPACER	1
84	SPACER	4	1/4" X 1/2" SPACER	1
85	SPACER	4	1/4" X 1/2" SPACER	1
86	SPACER	4	1/4" X 1/2" SPACER	1
87	SPACER	4	1/4" X 1/2" SPACER	1
88	SPACER	4	1/4" X 1/2" SPACER	1
89	SPACER	4	1/4" X 1/2" SPACER	1
90	SPACER	4	1/4" X 1/2" SPACER	1
91	SPACER	4	1/4" X 1/2" SPACER	1
92	SPACER	4	1/4" X 1/2" SPACER	1
93	SPACER	4	1/4" X 1/2" SPACER	1
94	SPACER	4	1/4" X 1/2" SPACER	1
95	SPACER	4	1/4" X 1/2" SPACER	1
96	SPACER	4	1/4" X 1/2" SPACER	1
97	SPACER	4	1/4" X 1/2" SPACER	1
98	SPACER	4	1/4" X 1/2" SPACER	1
99	SPACER	4	1/4" X 1/2" SPACER	1
100	SPACER	4	1/4" X 1/2" SPACER	1

This is a REDUCED PRINT

DESIGNATION	DATE	REVISION	BY
TOLERANCES UNLESS OTHERWISE SPECIFIED			
FRACTIONS 1/16, 1/8, 1/4, 3/8, 1/2, 5/8, 3/4, 7/8			
DECIMALS 0.015, 0.030, 0.045, 0.060, 0.075, 0.090, 0.105, 0.120, 0.135, 0.150, 0.165, 0.180, 0.195, 0.210, 0.225, 0.240, 0.255, 0.270, 0.285, 0.300, 0.315, 0.330, 0.345, 0.360, 0.375, 0.390, 0.405, 0.420, 0.435, 0.450, 0.465, 0.480, 0.495, 0.510, 0.525, 0.540, 0.555, 0.570, 0.585, 0.600, 0.615, 0.630, 0.645, 0.660, 0.675, 0.690, 0.705, 0.720, 0.735, 0.750, 0.765, 0.780, 0.795, 0.810, 0.825, 0.840, 0.855, 0.870, 0.885, 0.900, 0.915, 0.930, 0.945, 0.960, 0.975, 0.990, 1.005			
UNLESS SPECIFIED			
DESIGNED BY			
CHECKED BY			
APPROVED BY			
DATE			
TITLE VOL PAR PRIMARY VERTICAL STATIC LINE ANCHOR VOL ATTACHMENT PART			
U.S. DEPT. OF AGRICULTURE FOREST SERVICE EQUIPMENT DEVELOPMENT CENTER MISSOULA, MONTANA		MEDC- 7477 SHEET 6 OF 6	

United States of America
Department of Transportation — Federal Aviation Administration
Supplemental Type Certificate

Number SA2740NM

This certificate, issued to United States Forest Service
MEDC, Building #1 - Fort Missoula
Missoula, Montana 59801

certifies that the change in the type design for the following product with the limitations and conditions therefor as specified hereon meets the airworthiness requirements of Part 3 of the Civil Air Regulations.

Original Product — Type Certificate Number: T.C. 765
Make: Beech
Model: H18 as modified by Volpar BE8T conversion

Description of Type Design Change:
Installation of overhead cargo-dropper tether anchor in accordance with Federal Aviation Administration (FAA) sealed Drawing Number MEDC-758 dated September 1985, FAA approved March 20, 1986 or subsequent approved revisions.

Limitations and Conditions:

This approval should not be extended to other aircraft of this model on which other previously approved modifications are incorporated unless it is determined that the interrelationship between this change and any other previously approved modification will introduce no adverse effect upon the airworthiness of the aircraft.

This certificate and the supporting data which is the basis for approval shall remain in effect until surrendered, suspended, revoked, or a termination date is otherwise established by the Administrator of the Federal Aviation Administration.

Date of application: November 25, 1984

Date reissued:

Date of issuance: March 20, 1986

Date amended:



By direction of the Administrator

Woodford Boyce
Woodford K. Boyce, *Signature* Manager
Denver Aircraft Certification Office
Northwest Mountain Region, Aurora, Colorado

(Title)

Any alteration of this certificate is punishable by a fine of not exceeding \$1,000, or imprisonment not exceeding 3 years, or both.

INSTRUCTIONS: The transfer endorsement below may be used to notify the appropriate FAA Regional Office of the transfer of this Supplemental Type Certificate.

The FAA will reissue the certificate in the name of the transferee and forward it to him.

TRANSFER ENDORSEMENT

Transfer the ownership of Supplemental Type Certificate Number _____

to *(Name of transferee)* _____

(Address of transferee) _____
(Number and street)

(City, State, and ZIP code)

from *(Name of grantor)* *(Print or type)* _____

(Address of grantor) _____
(Number and street)

(City, State, and ZIP code)

Extent of Authority (if licensing agreement): _____

Date of Transfer: _____

Signature of grantor *(In ink)*: _____

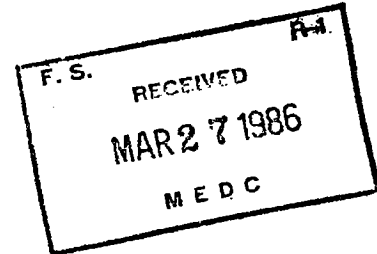


U.S. Department
of Transportation
**Federal Aviation
Administration**

NORTHWEST MOUNTAIN REGION
Denver Aircraft Certification Office
10455 East 25th Avenue-Suite 307
Aurora, Colorado 80010
(303) 340-5575 or 5578

MAR 25 1986

U.S Forest Service
MEDC, Building #1 - Fort Missoula
Missoula, Montana 59801



Gentlemen:

Project No. A1197NMD-S

We have completed our evaluation of your supplemental type certificate (STC) project and find that you have satisfactorily demonstrated compliance with the applicable certification regulations. Accordingly, we have enclosed STC No. SA2740NM for the installation of overhead cargo-dropper tether anchor in Beech H18 as modified by Volpar BE8T conversion.

This STC is official FAA approval of your installation and may be used to authorize identical installations on other aircraft of the same model, subject to the limitations noted on the certificate. It may be transferred or otherwise made available to another party by means of a licensee arrangement in accordance with Federal Aviation Regulations (FAR) 21.47. You are requested to advise your local office within 30 days after the transfer when you transfer or grant licensee rights to the STC in order that we may take the necessary recording or reissuance action.


As recipient of this approval, except as provided in FAR 21.3(d), you are required to report any failure, malfunction, or defect in any product or part manufactured by you that you have determined has resulted or could result in any of the occurrences listed in FAR Part 21.3(c). The report should be communicated initially by telephone to the Manager, Denver Aircraft Certification Office, telephone number (303) 340-5575, within 24 hours after it has been determined that the failure has occurred. In addition, written notification to the Manager, ANM-100D, at the above address is required. FAA Form 8330-2 (Malfunction or Defect Report) or any other appropriate format is acceptable in transmitting the required details.



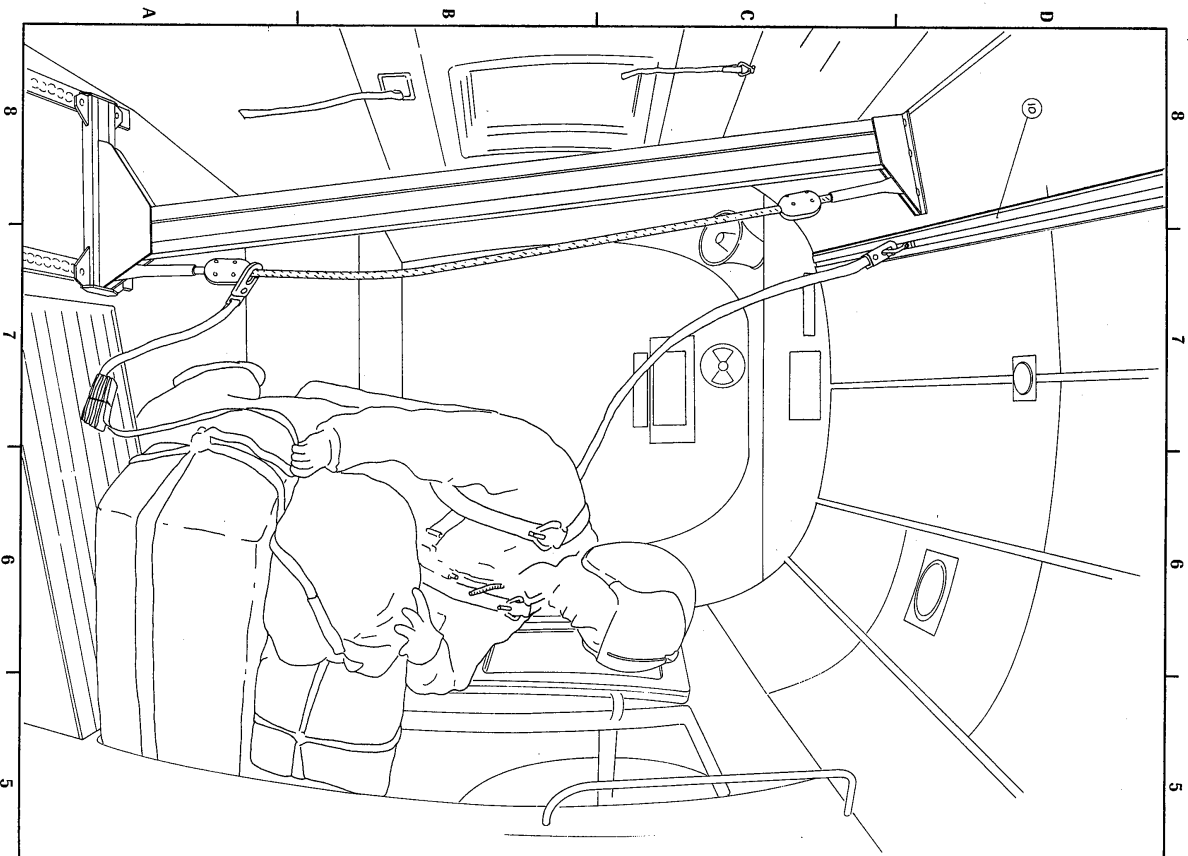
50 Years of Air Traffic Control Excellence
- A Standard for the World -

If you plan to manufacture replacement or modification parts for sale in conformance with approved data listed on the Certificate, you are required to comply with FAR Part 21.303. A Parts Manufacturer Approval (PMA) may be issued under the provisions of FAR 21.303(d) when you submit a statement certifying that you have established a fabrication inspection system as required by FAR 21.303(h). The identification requirements for parts produced under a PMA are in FAR 45.15. Your statement may be in letter form, with a reference to the STC number, and should be mailed to the address indicated above.

Sincerely,

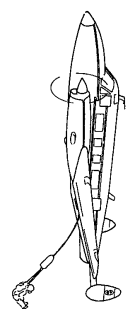

Woodford R. Boyce
Manager, Denver Aircraft
Certification Office

Enclosure



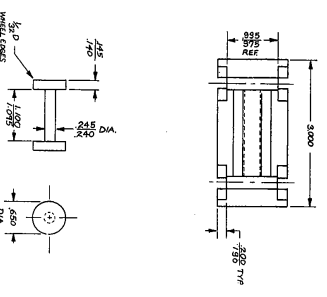
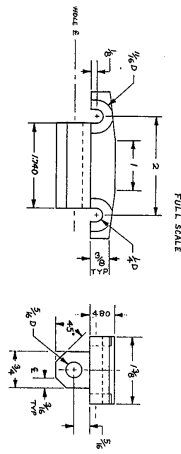
NO.		PART NAME		MATERIAL-DESCRIPTION		SHEET	
1	CAR	5	1/2" SQ ALUMINUM BAR-36				
2	WHEEL	10	3/8" DIA ROLLING ALUMINUM CASTERS				
3	DRYING	2	WASHERS				
4	WHEEL	1	WASHERS				
5	WASHER	1	WASHERS				
6	WASHER	1	WASHERS				
7	WASHER	1	WASHERS				
8	WASHER	1	WASHERS				

INSTALLATION FOR VOLPAR AIRCRAFT



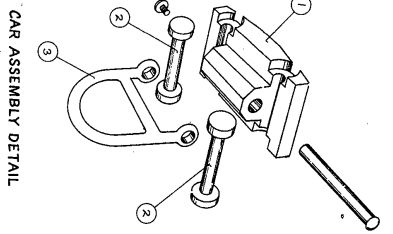
- NOTES:
1. WORK ON INSTALLATION OF SEAT IN AIRCRAFT SHALL BE DONE BY OR UNDER SUPERVISION OF A FAA CERTIFIED AIRCRAFT MECHANIC.
 2. RIVET INSTALLATION AND RECEIPT SHALL BE DONE BY OR UNDER SUPERVISION OF A FAA CERTIFIED AIRCRAFT MECHANIC HAWKBOOK 1, 88A-4655-15A, CHAPTER 3.
 3. ALL 2024 ALUMINUM MUST BE HEAT TREATED H 6082.

1 CAR
FULL SCALE



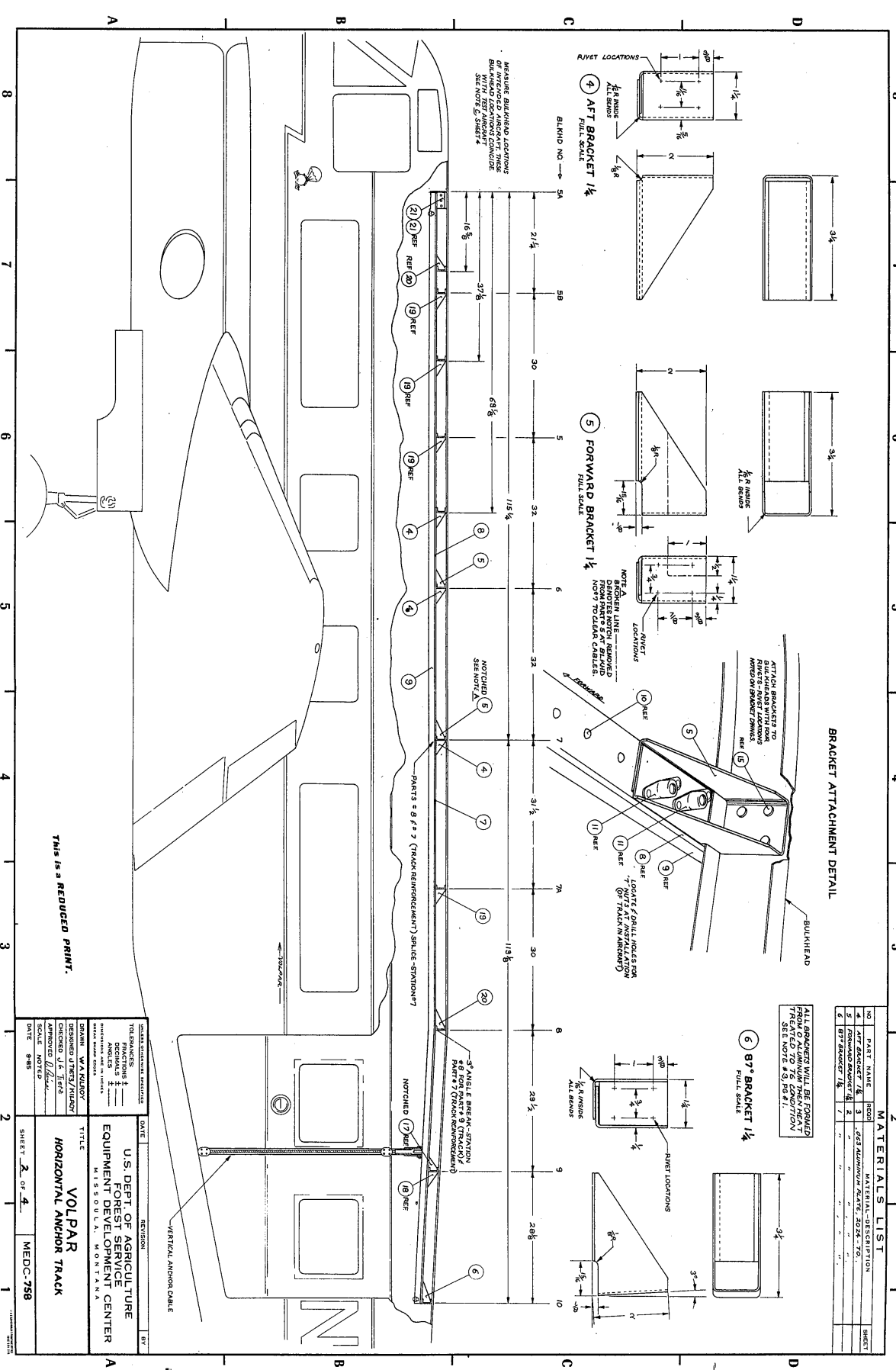
2 WHEEL
TWO SIZES

THIS IS A REDUCED PRINT.



CAR ASSEMBLY DETAIL

TITLE		REVISION		DATE		BY	
U.S. DEPT. OF AGRICULTURE FOREST SERVICE EQUIPMENT DEVELOPMENT CENTER MISSOULA, MONTANA							
VOLPAR HORIZONTAL ANCHOR TRACK							
DRAWN: WA RILEY							
CHECKED: WA RILEY							
APPROVED: WA RILEY							
SCALE: NONE							
DATE: 8-85							
SHEET 1 OF 4							
MEDC-758							



MATERIALS LIST

NO.	PART NAME	QTY	MATERIAL-DESCRIPTION	SHEET
1	ANCHOR TRACK	1	ALUMINUM ANGLE, 3024-T6	
2	BRACKET	2	ALUMINUM ANGLE, 3024-T6	
3	BRACKET	2	ALUMINUM ANGLE, 3024-T6	
4	BRACKET	2	ALUMINUM ANGLE, 3024-T6	
5	BRACKET	2	ALUMINUM ANGLE, 3024-T6	
6	BRACKET	2	ALUMINUM ANGLE, 3024-T6	
7	BRACKET	2	ALUMINUM ANGLE, 3024-T6	
8	BRACKET	2	ALUMINUM ANGLE, 3024-T6	
9	BRACKET	2	ALUMINUM ANGLE, 3024-T6	
10	BRACKET	2	ALUMINUM ANGLE, 3024-T6	
11	BRACKET	2	ALUMINUM ANGLE, 3024-T6	

ALL BRACKETS WILL BE FORGED FROM 6061 ALUMINUM T6051 T6051
SEE NOTE #3, P85/1

DESIGNED BY: [Name]
 CHECKED BY: [Name]
 DATE: 9-85

REVISION: [Name]
 DATE: [Date]

TITLE: **VOLPAR HORIZONTAL ANCHOR TRACK**

U.S. DEPT. OF AGRICULTURE
 FOREST SERVICE
 EQUIPMENT DEVELOPMENT CENTER
 MISSOURI ARMY CENTER
 MOUNTAIN VIEW, MISSOURI 64565

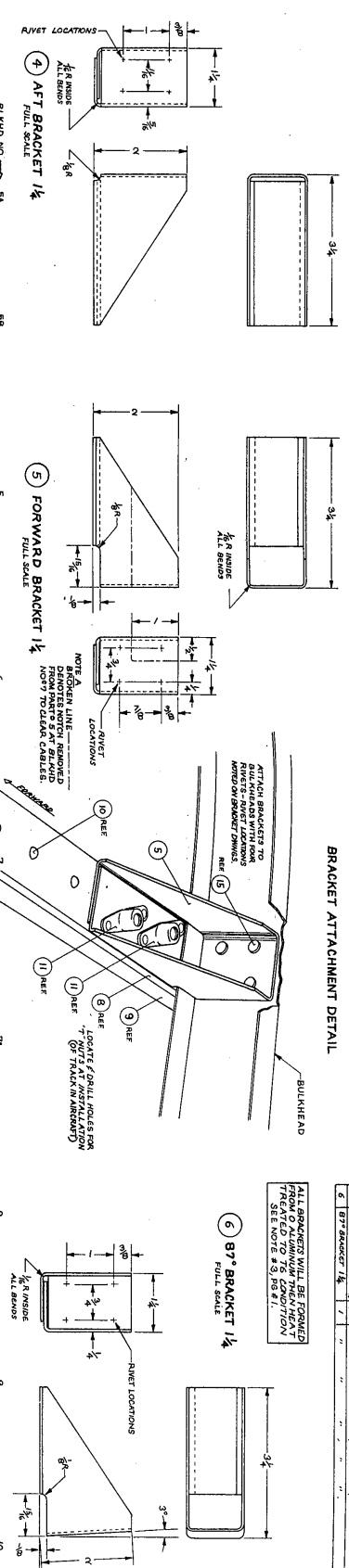
APPROVED: [Signature]
 DATE: 9-85

SCALE: NOTED

SHEET 2 OF 4 MEDC-758

THIS IS A REDUCED PRINT.

BRACKET ATTACHMENT DETAIL



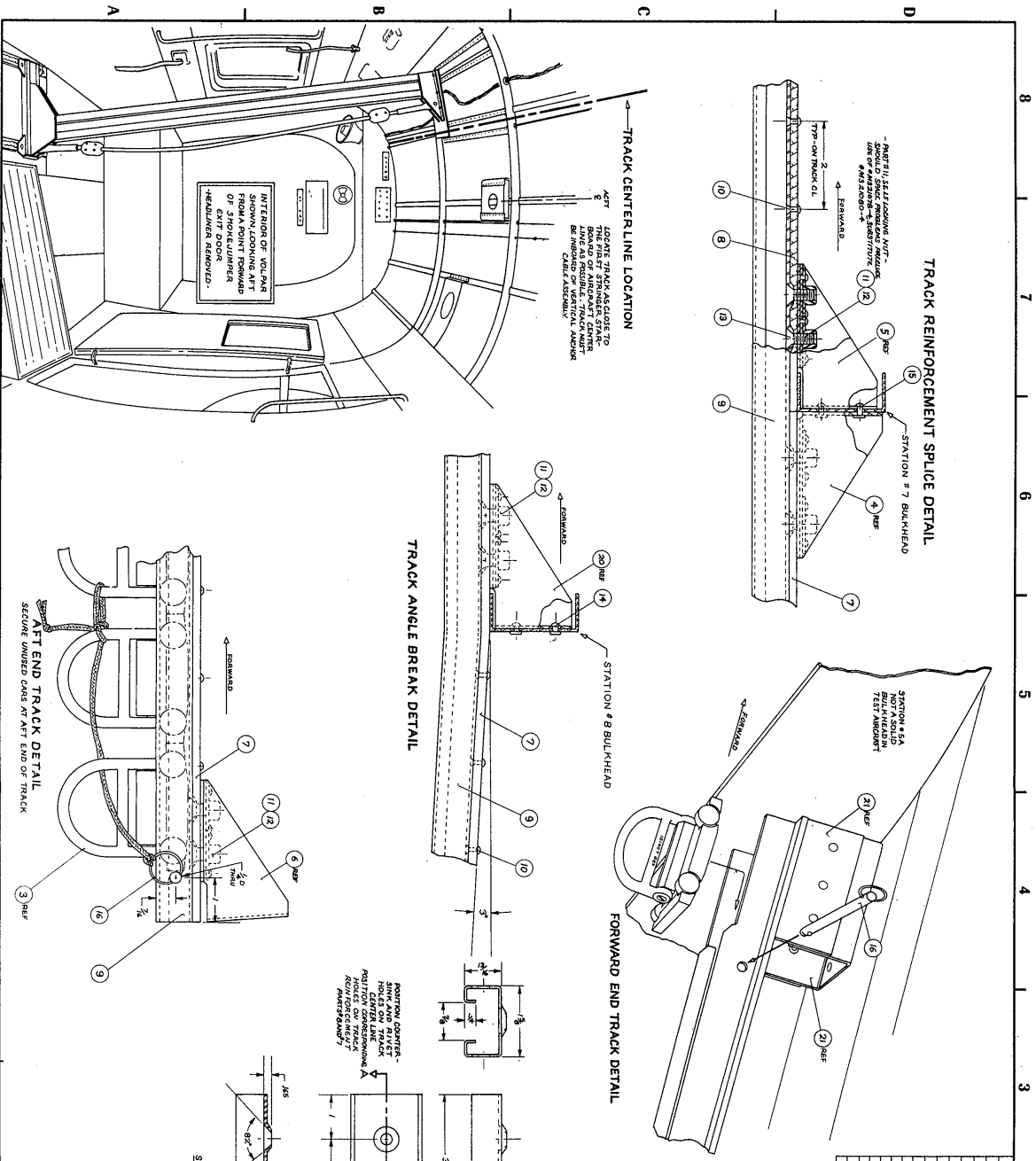
MEASURE BULKHEAD LOCATIONS
 BULKHEAD LOCATIONS CONSIDER
 SEE NOTE #3, P85/1

NOTCHES
 SEE NOTE #3

PARTS # 6, 7, 2 (TRACK REINFORCEMENT) SPACE STATION #7

3" WIDE BREAK-SECTION
 PART #7 (TRACK REINFORCEMENT)

VERTICAL ANCHOR CABLE



2 MATERIALS LIST

NO.	PART NAME	QTY	MATERIAL-DESCRIPTION	SHEET
1	6x2 1/8 LONG ALUMINUM 6061-T6	1		
2	6x3 1/2 1/2 1/2 ALUMINUM 6061-T6	1		
3	1/2 1/2 1/2 1/2 ALUMINUM 6061-T6	1		
4	1/2 1/2 1/2 1/2 ALUMINUM 6061-T6	1		
5	1/2 1/2 1/2 1/2 ALUMINUM 6061-T6	1		
6	1/2 1/2 1/2 1/2 ALUMINUM 6061-T6	1		
7	1/2 1/2 1/2 1/2 ALUMINUM 6061-T6	1		
8	1/2 1/2 1/2 1/2 ALUMINUM 6061-T6	1		
9	1/2 1/2 1/2 1/2 ALUMINUM 6061-T6	1		
10	1/2 1/2 1/2 1/2 ALUMINUM 6061-T6	1		
11	1/2 1/2 1/2 1/2 ALUMINUM 6061-T6	1		
12	1/2 1/2 1/2 1/2 ALUMINUM 6061-T6	1		
13	1/2 1/2 1/2 1/2 ALUMINUM 6061-T6	1		
14	1/2 1/2 1/2 1/2 ALUMINUM 6061-T6	1		
15	1/2 1/2 1/2 1/2 ALUMINUM 6061-T6	1		
16	1/2 1/2 1/2 1/2 ALUMINUM 6061-T6	1		
17	1/2 1/2 1/2 1/2 ALUMINUM 6061-T6	1		
18	1/2 1/2 1/2 1/2 ALUMINUM 6061-T6	1		
19	1/2 1/2 1/2 1/2 ALUMINUM 6061-T6	1		
20	1/2 1/2 1/2 1/2 ALUMINUM 6061-T6	1		
21	1/2 1/2 1/2 1/2 ALUMINUM 6061-T6	1		
22	1/2 1/2 1/2 1/2 ALUMINUM 6061-T6	1		
23	1/2 1/2 1/2 1/2 ALUMINUM 6061-T6	1		
24	1/2 1/2 1/2 1/2 ALUMINUM 6061-T6	1		
25	1/2 1/2 1/2 1/2 ALUMINUM 6061-T6	1		
26	1/2 1/2 1/2 1/2 ALUMINUM 6061-T6	1		
27	1/2 1/2 1/2 1/2 ALUMINUM 6061-T6	1		
28	1/2 1/2 1/2 1/2 ALUMINUM 6061-T6	1		
29	1/2 1/2 1/2 1/2 ALUMINUM 6061-T6	1		
30	1/2 1/2 1/2 1/2 ALUMINUM 6061-T6	1		
31	1/2 1/2 1/2 1/2 ALUMINUM 6061-T6	1		
32	1/2 1/2 1/2 1/2 ALUMINUM 6061-T6	1		
33	1/2 1/2 1/2 1/2 ALUMINUM 6061-T6	1		
34	1/2 1/2 1/2 1/2 ALUMINUM 6061-T6	1		
35	1/2 1/2 1/2 1/2 ALUMINUM 6061-T6	1		
36	1/2 1/2 1/2 1/2 ALUMINUM 6061-T6	1		
37	1/2 1/2 1/2 1/2 ALUMINUM 6061-T6	1		
38	1/2 1/2 1/2 1/2 ALUMINUM 6061-T6	1		
39	1/2 1/2 1/2 1/2 ALUMINUM 6061-T6	1		
40	1/2 1/2 1/2 1/2 ALUMINUM 6061-T6	1		
41	1/2 1/2 1/2 1/2 ALUMINUM 6061-T6	1		
42	1/2 1/2 1/2 1/2 ALUMINUM 6061-T6	1		
43	1/2 1/2 1/2 1/2 ALUMINUM 6061-T6	1		
44	1/2 1/2 1/2 1/2 ALUMINUM 6061-T6	1		
45	1/2 1/2 1/2 1/2 ALUMINUM 6061-T6	1		
46	1/2 1/2 1/2 1/2 ALUMINUM 6061-T6	1		
47	1/2 1/2 1/2 1/2 ALUMINUM 6061-T6	1		
48	1/2 1/2 1/2 1/2 ALUMINUM 6061-T6	1		
49	1/2 1/2 1/2 1/2 ALUMINUM 6061-T6	1		
50	1/2 1/2 1/2 1/2 ALUMINUM 6061-T6	1		

NOTE B:
 1. 6x2 1/8 LONG ALUMINUM 6061-T6
 2. 6x3 1/2 1/2 1/2 ALUMINUM 6061-T6
 3. 1/2 1/2 1/2 1/2 ALUMINUM 6061-T6
 4. 1/2 1/2 1/2 1/2 ALUMINUM 6061-T6
 5. 1/2 1/2 1/2 1/2 ALUMINUM 6061-T6
 6. 1/2 1/2 1/2 1/2 ALUMINUM 6061-T6
 7. 1/2 1/2 1/2 1/2 ALUMINUM 6061-T6
 8. 1/2 1/2 1/2 1/2 ALUMINUM 6061-T6
 9. 1/2 1/2 1/2 1/2 ALUMINUM 6061-T6
 10. 1/2 1/2 1/2 1/2 ALUMINUM 6061-T6
 11. 1/2 1/2 1/2 1/2 ALUMINUM 6061-T6
 12. 1/2 1/2 1/2 1/2 ALUMINUM 6061-T6
 13. 1/2 1/2 1/2 1/2 ALUMINUM 6061-T6
 14. 1/2 1/2 1/2 1/2 ALUMINUM 6061-T6
 15. 1/2 1/2 1/2 1/2 ALUMINUM 6061-T6
 16. 1/2 1/2 1/2 1/2 ALUMINUM 6061-T6
 17. 1/2 1/2 1/2 1/2 ALUMINUM 6061-T6
 18. 1/2 1/2 1/2 1/2 ALUMINUM 6061-T6
 19. 1/2 1/2 1/2 1/2 ALUMINUM 6061-T6
 20. 1/2 1/2 1/2 1/2 ALUMINUM 6061-T6
 21. 1/2 1/2 1/2 1/2 ALUMINUM 6061-T6
 22. 1/2 1/2 1/2 1/2 ALUMINUM 6061-T6
 23. 1/2 1/2 1/2 1/2 ALUMINUM 6061-T6
 24. 1/2 1/2 1/2 1/2 ALUMINUM 6061-T6
 25. 1/2 1/2 1/2 1/2 ALUMINUM 6061-T6
 26. 1/2 1/2 1/2 1/2 ALUMINUM 6061-T6
 27. 1/2 1/2 1/2 1/2 ALUMINUM 6061-T6
 28. 1/2 1/2 1/2 1/2 ALUMINUM 6061-T6
 29. 1/2 1/2 1/2 1/2 ALUMINUM 6061-T6
 30. 1/2 1/2 1/2 1/2 ALUMINUM 6061-T6
 31. 1/2 1/2 1/2 1/2 ALUMINUM 6061-T6
 32. 1/2 1/2 1/2 1/2 ALUMINUM 6061-T6
 33. 1/2 1/2 1/2 1/2 ALUMINUM 6061-T6
 34. 1/2 1/2 1/2 1/2 ALUMINUM 6061-T6
 35. 1/2 1/2 1/2 1/2 ALUMINUM 6061-T6
 36. 1/2 1/2 1/2 1/2 ALUMINUM 6061-T6
 37. 1/2 1/2 1/2 1/2 ALUMINUM 6061-T6
 38. 1/2 1/2 1/2 1/2 ALUMINUM 6061-T6
 39. 1/2 1/2 1/2 1/2 ALUMINUM 6061-T6
 40. 1/2 1/2 1/2 1/2 ALUMINUM 6061-T6
 41. 1/2 1/2 1/2 1/2 ALUMINUM 6061-T6
 42. 1/2 1/2 1/2 1/2 ALUMINUM 6061-T6
 43. 1/2 1/2 1/2 1/2 ALUMINUM 6061-T6
 44. 1/2 1/2 1/2 1/2 ALUMINUM 6061-T6
 45. 1/2 1/2 1/2 1/2 ALUMINUM 6061-T6
 46. 1/2 1/2 1/2 1/2 ALUMINUM 6061-T6
 47. 1/2 1/2 1/2 1/2 ALUMINUM 6061-T6
 48. 1/2 1/2 1/2 1/2 ALUMINUM 6061-T6
 49. 1/2 1/2 1/2 1/2 ALUMINUM 6061-T6
 50. 1/2 1/2 1/2 1/2 ALUMINUM 6061-T6

SECTION AA
 THIS IS A REDUCED PRINT.

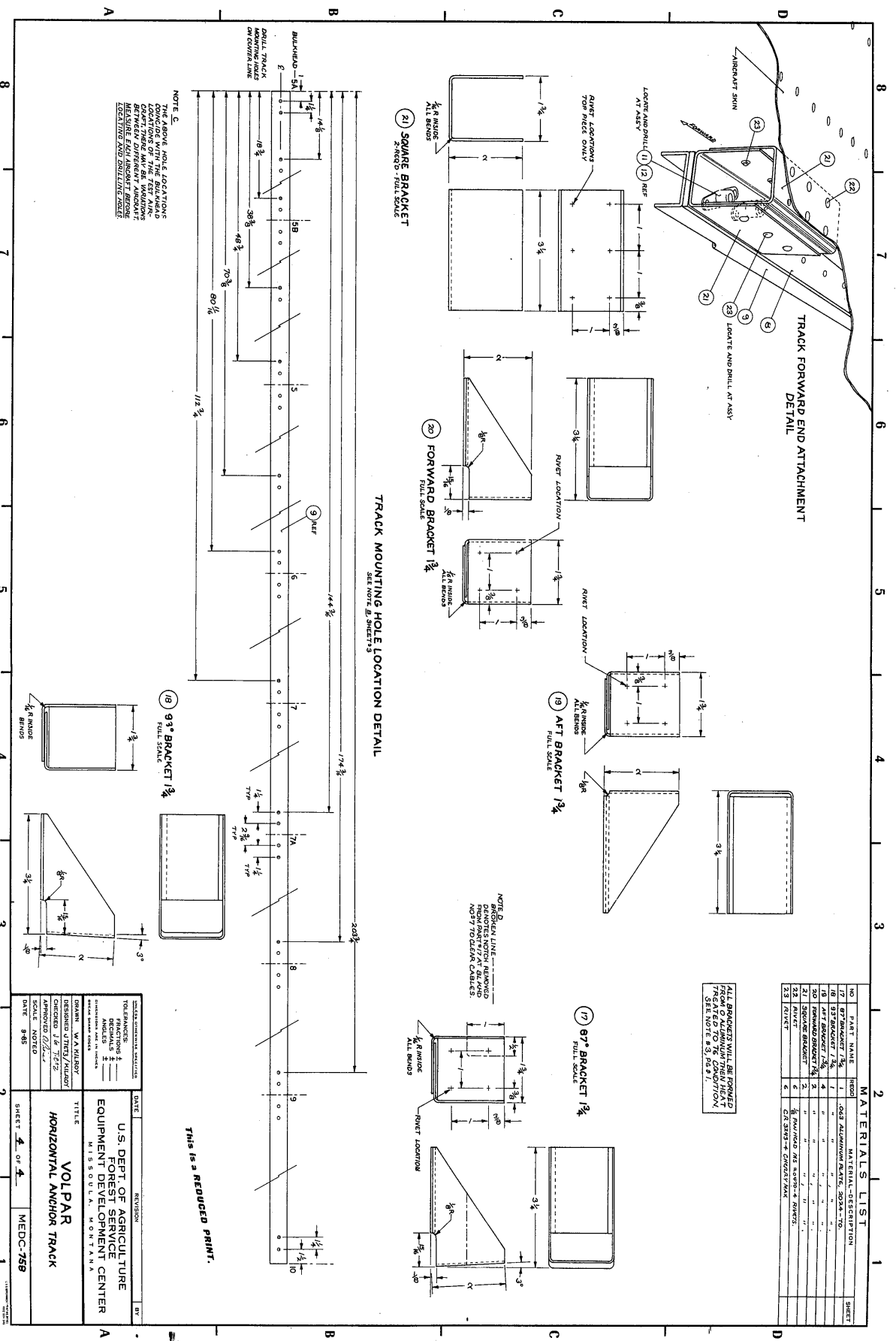
9 TRACK
 FORWARD END DETAIL WITH TROLLEY ADDRESS DRAWING

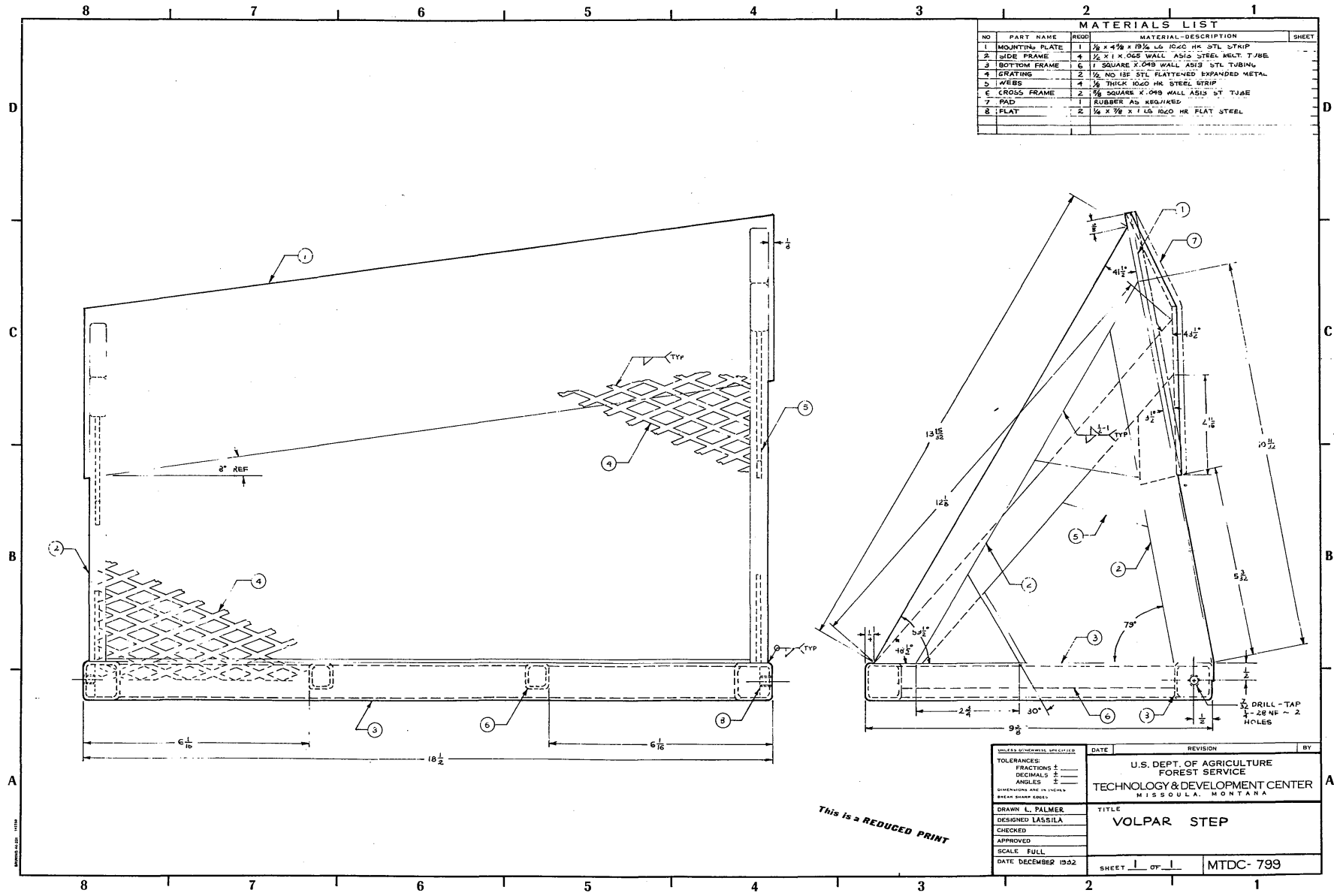
DRAWN: W.A. HULLOY
CHECKED: J. J. HULLOY
APPROVED: J. J. HULLOY
SCALE: 1/4" = 1'-0"
DATE: 3-85

TITLE: VOLPAR HORIZONTAL ANCHOR TRACK

**U.S. DEPT. OF AGRICULTURE
 FOREST SERVICE
 EQUIPMENT DEVELOPMENT CENTER
 MISSOURI, KANSAS**

SHEET 3 OF 4 **MECC-758**





MATERIALS LIST			
NO	PART NAME	QTY	MATERIAL-DESCRIPTION
1	MOUNTING PLATE	1	1/8" x 4 1/2" x 18 1/2" LG 1040 HR STL STRIP
2	SIDE FRAME	4	1/2" x 1" x 0.025 WALL AISI3 STEEL WELT. TUBE
3	BOTTOM FRAME	6	1" SQUARE X 0.019 WALL AISI3 STL TUBING
4	GRATING	2	1/2" NO 13E STL FLATTENED EXPANDED METAL
5	WEBB	4	3/8" THICK 1040 HR STEEL STRIP
6	CROSS FRAME	2	1/2" SQUARE X 0.019 WALL AISI3 ST TUBE
7	PAD	1	RUBBER AS REQUIRED
8	FLAT	2	1/4" x 3/8" x 1" LG 1040 HR FLAT STEEL

VOLPAR, MISSOULA, MONTANA		DATE	REVISION	BY
TOLERANCES:				
FRACTIONS 1/16"				
DECIMALS 0.005"				
ANGLES 1/2°				
DIMENSIONS ARE IN INCHES				
BASIC DRAMP CODES				
DRAWN L. PALMER		TITLE		
DESIGNED LASSILA		VOLPAR STEP		
CHECKED				
APPROVED				
SCALE FULL				
DATE DECEMBER 1962		SHEET 1 OF 1		MTDC- 799

This is a REDUCED PRINT