

rip

CESSNA 180B
CARAVAN

CESSNA 208 CARAVAN

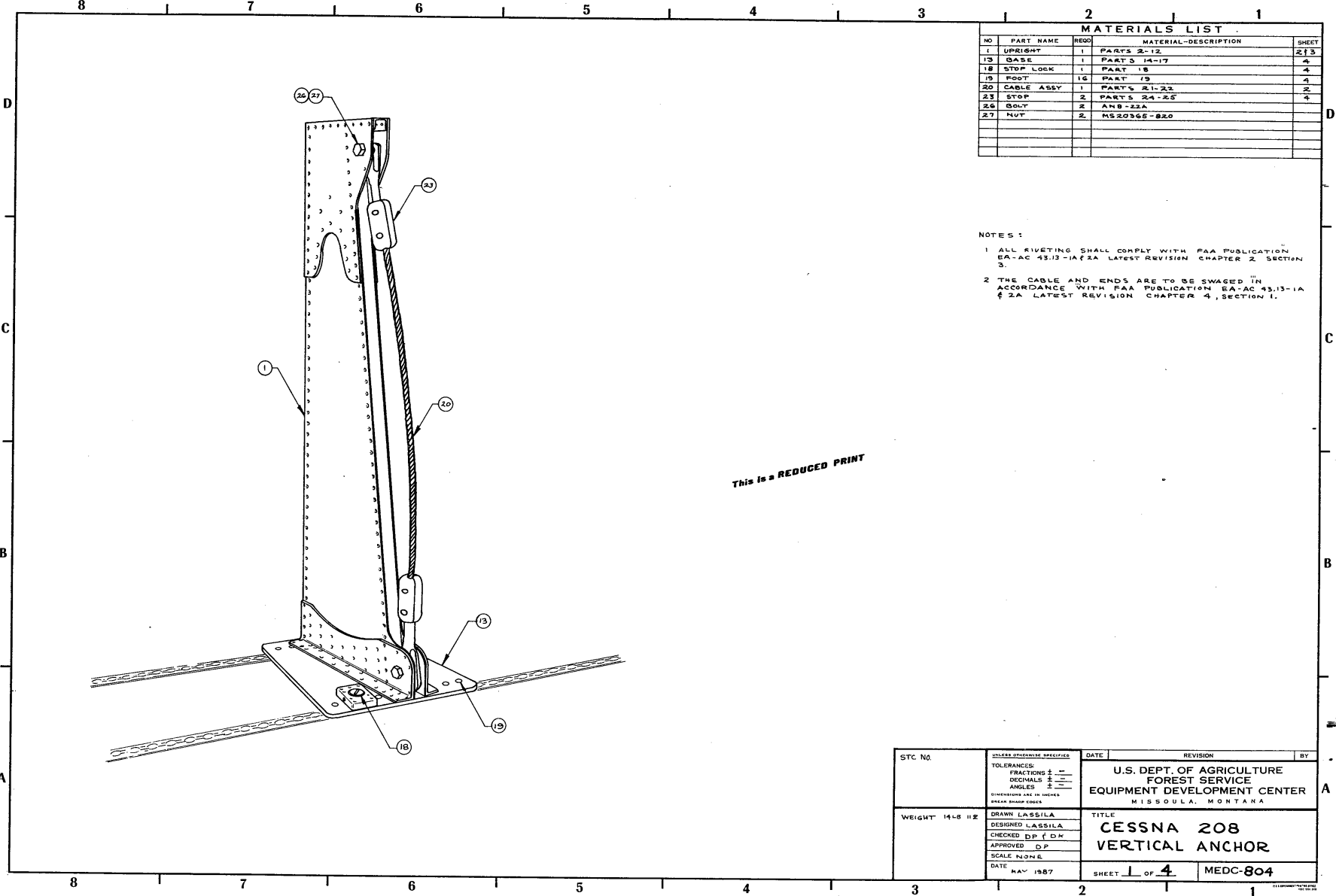
Note: The Cessna 208 Caravan is not an approved smokejumping aircraft. It is in the evaluation process for an approved aircraft.

Accessories Required For Smokejumping:

Primary Vertical Anchor: MEDC-804- Vertical Anchor Cable for Cessna 208
STC Strength: 2,000 pounds
STC #: pending

Secondary Horizontal Anchor: MEDC-791- Horizontal Cable Shock Absorber for Cessna 208
MEDC-808- Cessna 208 Caravan Horizontal Anchor cable--Forward attachment Point
STC Strength: 750 pounds
STC #: Pending

Jump Door, Jump Step, & Step Attachment: MEDC-759- Stepbasket (universal), Smokejumper Aircraft
MEDC-794- Universal Step Strut
MEDC-792- Cessna 208 Jump door
STC #: Pending

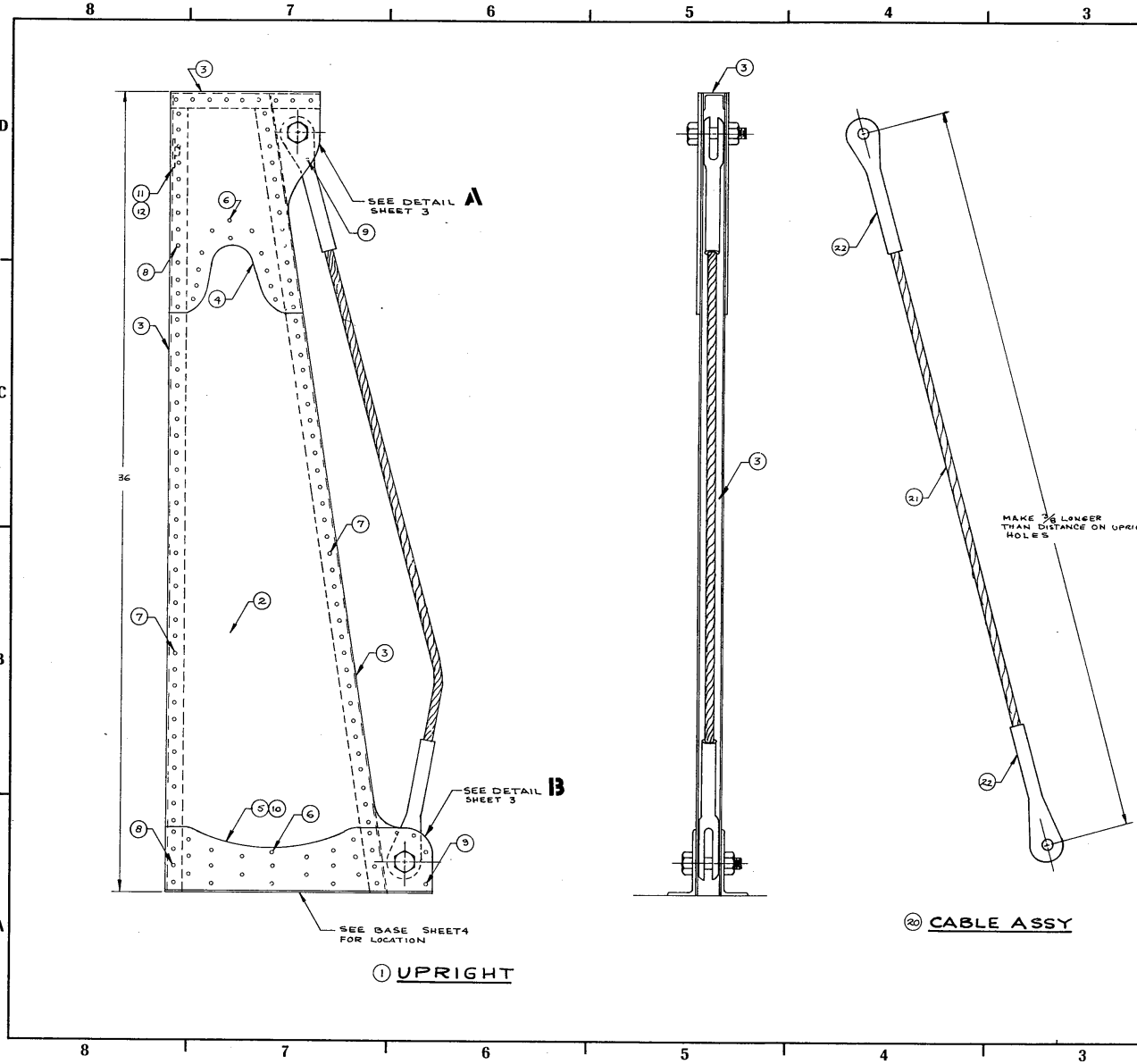


This is a REDUCED PRINT

MATERIALS LIST				
NO.	PART NAME	REQD.	MATERIAL-DESCRIPTION	SHEET
1	UPRIGHT	1	PARTS 2-12	213
13	BASE	1	PARTS 14-17	4
18	STOP LOCK	1	PART 18	4
19	FOOT	16	PART 19	4
20	CABLE ASSY	1	PARTS 21,22	2
23	STOP	2	PARTS 24-25	4
26	BOLT	2	AN8-22A	
27	NUT	2	MS20365-B20	

NOTES:
 1 ALL RIVETING SHALL COMPLY WITH FAA PUBLICATION SA-AC 43.13-1A (2A LATEST REVISION CHAPTER 2 SECTION 3)
 2 THE CABLE AND ENDS ARE TO BE SWAGED IN ACCORDANCE WITH FAA PUBLICATION SA-AC 43.13-1A (2A LATEST REVISION CHAPTER 4, SECTION 1).

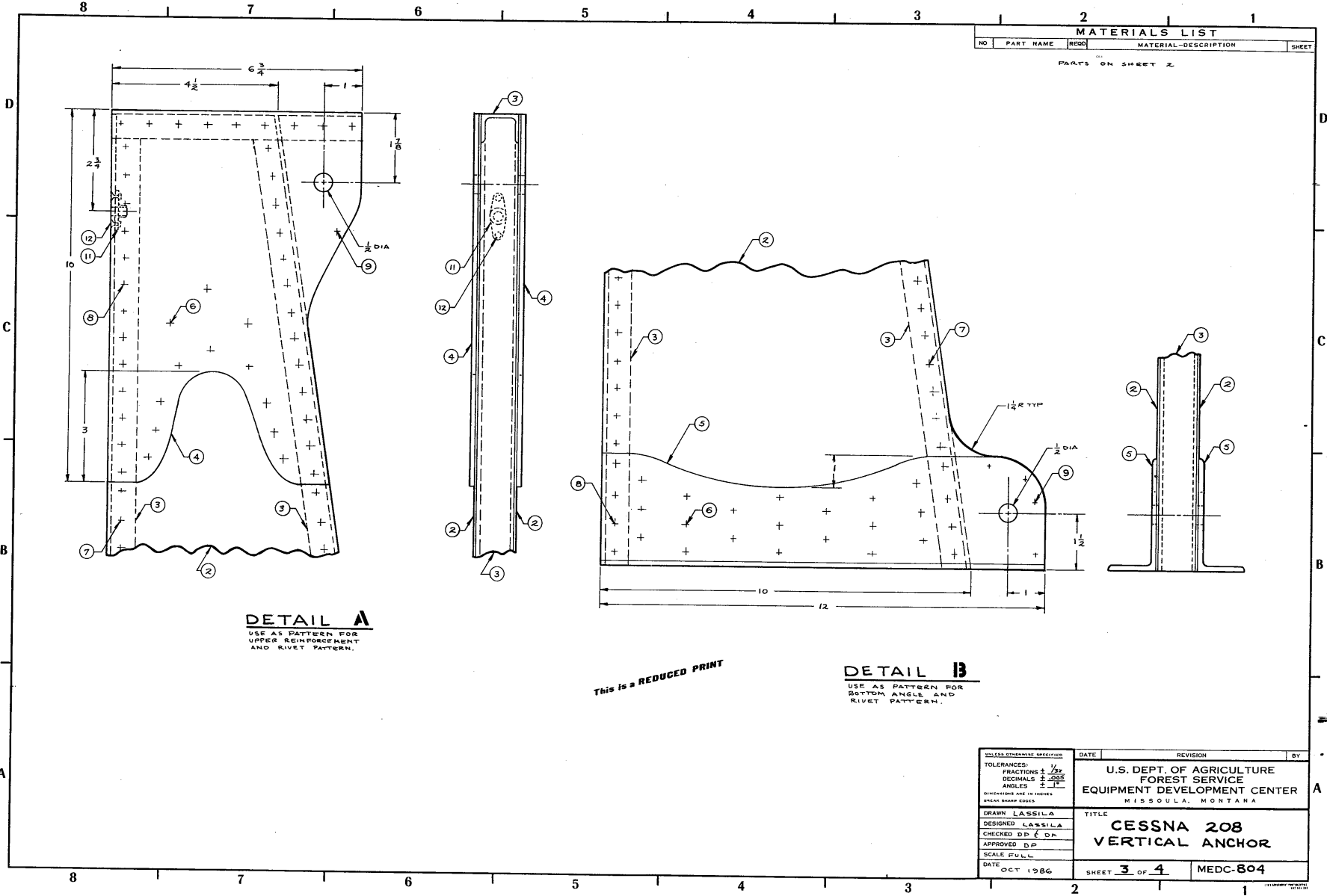
STC NO.	UNLESS OTHERWISE SPECIFIED TOLERANCES: FRACTIONS \pm --- DECIMALS \pm --- ANGLES \pm --- DIMENSIONS ARE IN INCHES BREAK SHARP EDGES	DATE	REVISION	BY
WEIGHT 14-8 1/2	DRAWN LASSILA DESIGNED LASSILA CHECKED D.P.F.D.H. APPROVED D.P. SCALE NONE	U.S. DEPT. OF AGRICULTURE FOREST SERVICE EQUIPMENT DEVELOPMENT CENTER MISSOULA, MONTANA		
DATE MAY 1987	TITLE CESSNA 208 VERTICAL ANCHOR		SHEET 1 OF 4	MECC-804



MATERIALS LIST			
NO	PART NAME	QTY	MATERIAL-DESCRIPTION
1	UPRIGHT	1	PARTS 2-12
2	SIDES	2	.063 THICK 2024-T3 ALUM ALLOY SHEET
3	CHANNEL	3	AND 10187-1007 2024-T3511 ALUM ALLOY
4	UPPER REINP	2	.125 THICK 2024-T3 ALUM ALLOY SHEET
5	BOTTOM ANGLE	2	3 X 1 1/2 X 3/8 2024-T3511 ALUM ALLOY ANGLE
6	RIVET	60	MS20470 AD4-6
7	RIVET	124	CHEVY HAV CR3243-4-3
8	RIVET	86	CHEVY HAV CR3243-4-5
9	RIVET	10	MS 20426 AD4-6
10	RIVET	44	MS 20470 AD4-9
11	T. NUT	1	MS 21078-1 OR NAS1023N4
12	RIVET	2	MS 20436 AD3-5
20	CABLE ASSY	1	PARTS 21-22
21	CABLE	1	3/8 DIA 7X19 GALV AIRCRAFT CABLE
22	FORK END	2	MS 20667-12

This is a REDUCED PRINT

UNLESS OTHERWISE SPECIFIED: TOLERANCES: FRACTIONS ± .01 DECIMALS ± .005 ANGLES ± 1°	DATE	REVISION	BY
DRAWN LASSILA DESIGNED LASSILA CHECKED D.P. & D.M. APPROVED D.P. SCALE HALF	U.S. DEPT. OF AGRICULTURE FOREST SERVICE EQUIPMENT DEVELOPMENT CENTER MISSOULA, MONTANA		
DATE OCT 1986	TITLE CESSNA 208 VERTICAL ANCHOR		SHEET 2 OF 4 MEDC-804



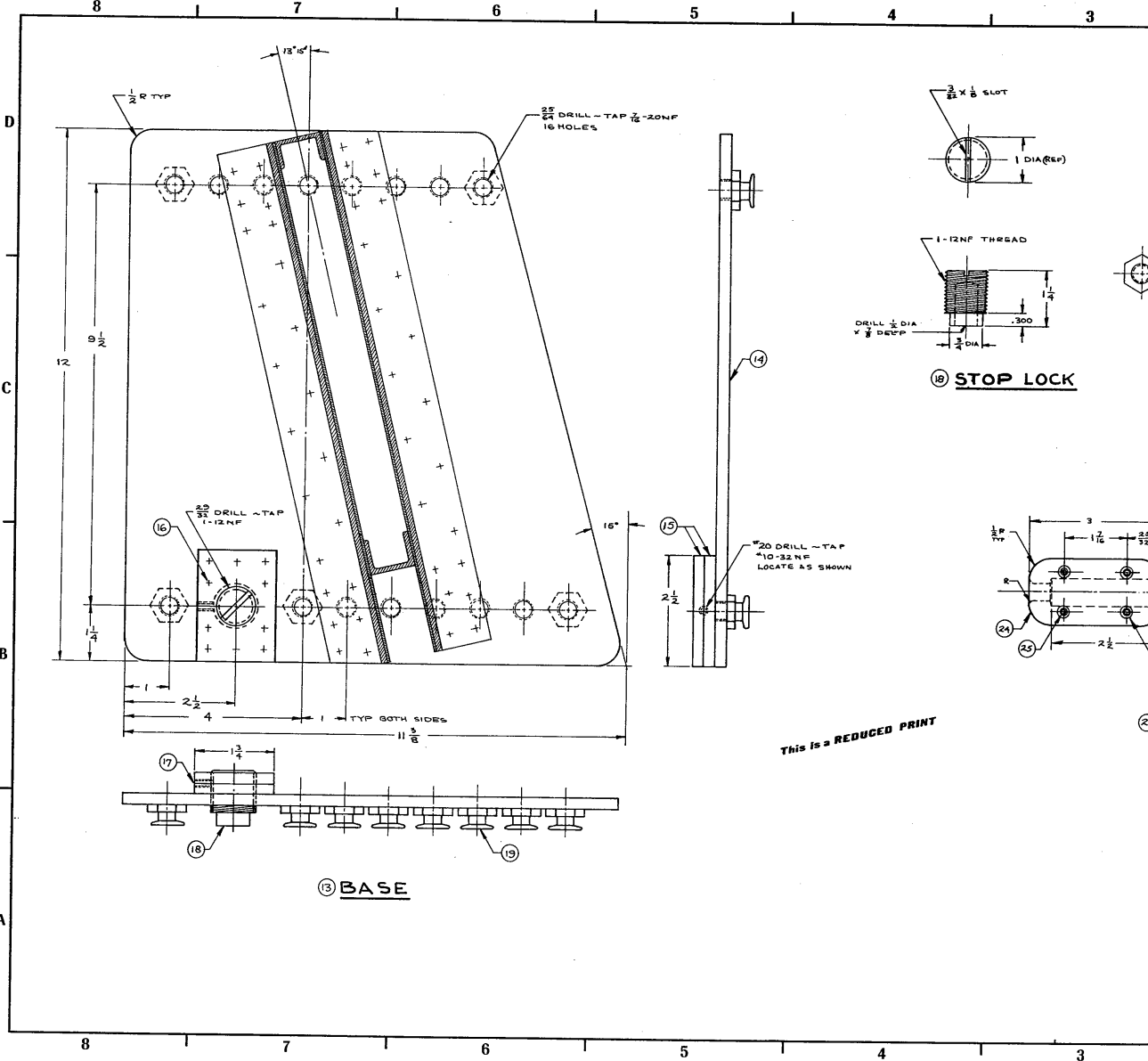
MATERIALS LIST			
NO	PART NAME	REQD	MATERIAL-DESCRIPTION
PARTS ON SHEET 2			

DETAIL A
USE AS PATTERN FOR
UPPER REINFORCEMENT
AND RIVET PATTERN.

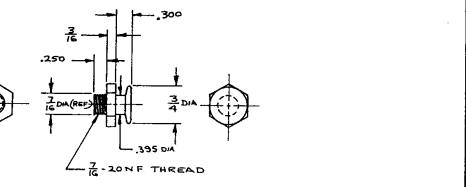
This is a REDUCED PRINT

DETAIL B
USE AS PATTERN FOR
BOTTOM ANGLE AND
RIVET PATTERN.

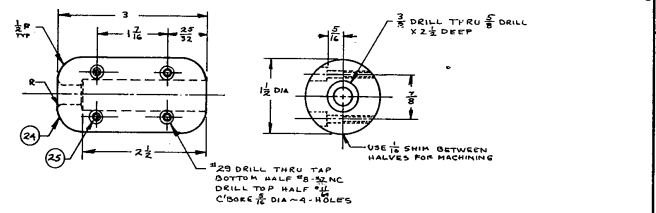
UNLESS OTHERWISE SPECIFIED	DATE	REVISION	BY	
TOLERANCES: FRACTIONS $\pm \frac{1}{32}$ DECIMALS $\pm .005$ ANGLES $\pm 1'$	U.S. DEPT. OF AGRICULTURE FOREST SERVICE EQUIPMENT DEVELOPMENT CENTER MISSOULA, MONTANA			
DIMENSIONS ARE IN INCHES UNLESS SHOWN OTHERWISE				
DRAWN LASSILA				TITLE
DESIGNED LASSILA				CESSNA 208 VERTICAL ANCHOR
CHECKED D.P. D.A. APPROVED D.P. SCALE FULL				DATE
DATE OCT 1986	SHEET 3 OF 4	MEDC-804		



MATERIALS LIST				
NO	PART NAME	REQD	MATERIAL-DESCRIPTION	SHEET
13	BASE	1	PARTS 14-17	
14	BASE PLATE	1	1/4 THICK 7075-T6 ALUM ALLOY	
15	PAD	2	3/4 X 1 3/4 V 2 1/2 7075-T6 ALUM ALLOY	
16	RIVET	10	MS 20426 AD4-16	
17	SET SCREW	1	#10-32NF SET SCREW	
18	STOP LOCK	1	1 DIA STEEL ROUND	
19	FOOT	1	3/8 HEX RVCUT 40 (A1140) ANNEALED STEEL	
23	STOP	2	PARTS 24-25	
24	BODY	2	1 1/2 DIA ALUM ROUND	
25	SCREWS	8	#8-32NC X 3/4 LG SOCKET HD CAP SCREW	

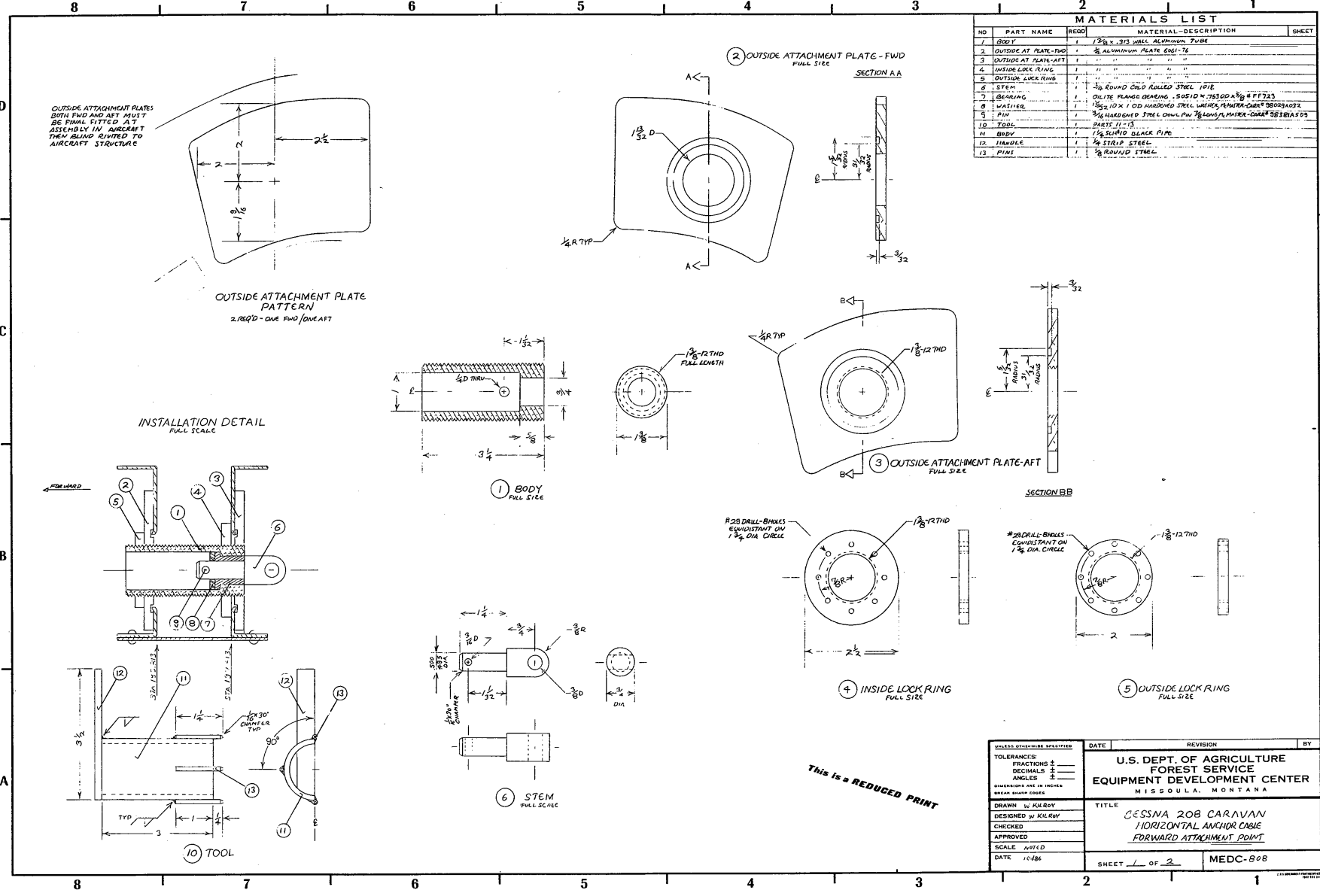


19 FOOT



23 STOP

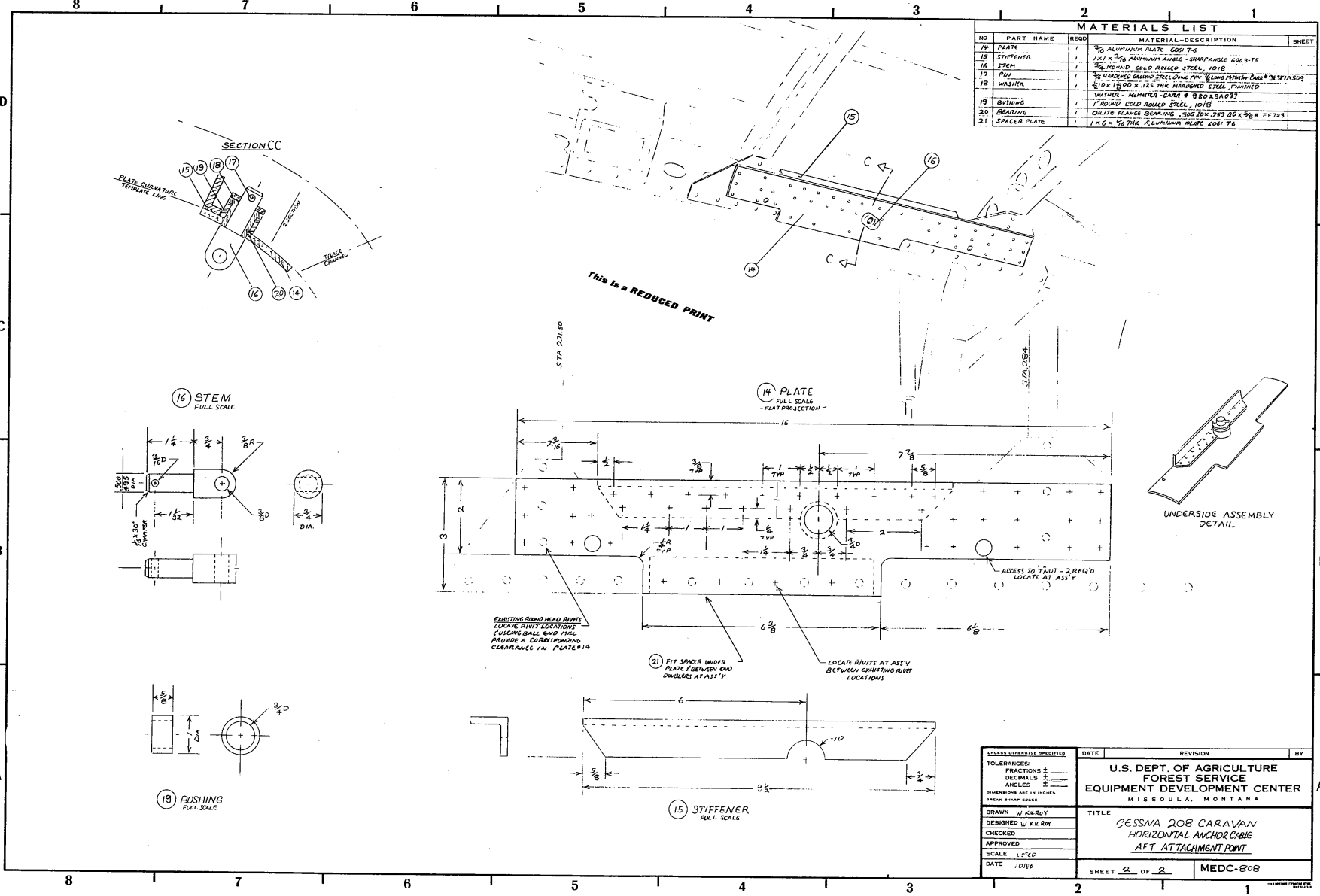
UNLESS OTHERWISE SPECIFIED	DATE	REVISION	BY
TOLERANCES FRACTIONS $\pm \frac{.005}{16}$ DECIMALS $\pm .0005$ ANGLES $\pm 1'$			
DIMENSIONS ARE IN INCHES BREAK SHARP EDGES			
DRAWN LASSILA	TITLE		
DESIGNED LASSILA	U.S. DEPT. OF AGRICULTURE FOREST SERVICE EQUIPMENT DEVELOPMENT CENTER MISSOULA, MONTANA		
CHECKED DP C DK	CESSNA 208 VERTICAL ANCHOR		
APPROVED DP	SCALE FULL		
DATE OCT 1966	SHEET 4 OF 4	MEDC-804	



MATERIALS LIST				
NO	PART NAME	REQD	MATERIAL-DESCRIPTION	SHEET
1	BODY	1	1 3/8 x 3/16 WALL ALUMINUM TUBE	
2	OUTSIDE AT PLATE-FWD	1	1/2 ALUMINUM PLATE ENG'G	
3	OUTSIDE AT PLATE-AFT	1	" " " " " "	
4	INSIDE LOCK RING	1	" " " " " "	
5	OUTSIDE LOCK RING	1	" " " " " "	
6	STEM	1	3/8 ROUND COLD ROLLED STEEL PIPE	
7	WASHER	1	OUTER FLANGE WASHING SAE 10 N. 78300A 3/8 x 1 1/2	
8	NUT	1	3/8 x 1 1/2 OD HARDENED STEEL W/LOCK W/FLANGE-CONR 78029A02	
9	PIN	1	3/8 HARDENED STEEL COWL PIN 78040A PLATE-CONR 78029A02	
10	TOOL	1	DRIFT PINS	
11	BODY	1	1/2 ROUND BLACK PIPE	
12	HANDLE	1	1/2 STRIP STEEL	
13	PINS	1	1/8 ROUND STEEL	

UNLESS OTHERWISE SPECIFIED		REVISION		BY
TOLERANCES:		U.S. DEPT. OF AGRICULTURE		
FRACTIONS ±		FOREST SERVICE		
DECIMALS ±		EQUIPMENT DEVELOPMENT CENTER		
ANGLES ±		MISSOULA, MONTANA		
DIMENSIONS ARE IN INCHES		TITLE		
BREAK SHARP EDGES		CESSNA 208 CARAVAN		
DRAWN BY KILROY		HORIZONTAL ANCHOR CABLE		
DESIGNED BY KILROY		FORWARD ATTACHMENT POINT		
CHECKED		SCALE 1/4"=1'-0"		
APPROVED		DATE 1/4/86		
DATE 1/4/86		SHEET 1 OF 2		MEDC-808

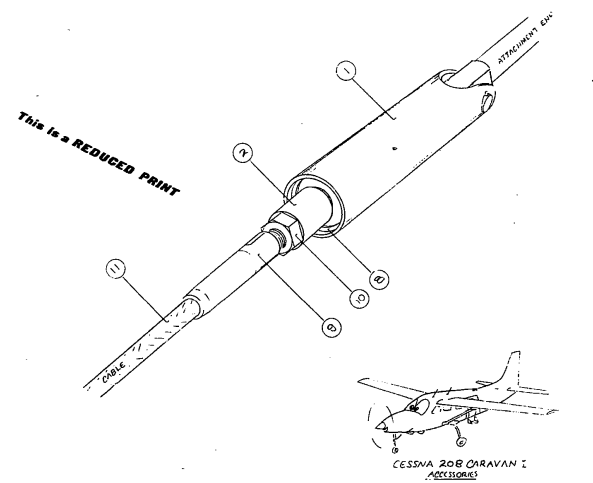
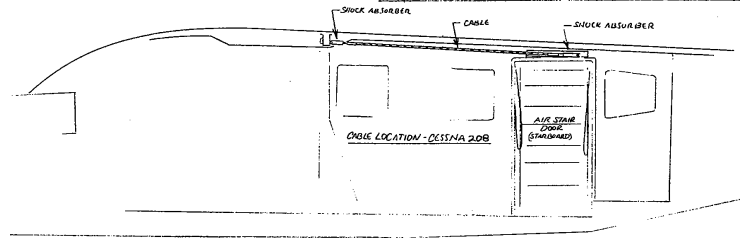
This is a REDUCED PRINT



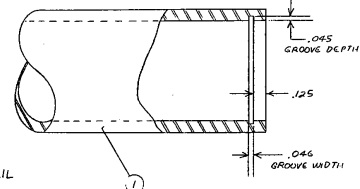
NO	PART NAME	REQD	MATERIAL DESCRIPTION	SHEET
14	PLATE	1	3/8" ALUMINUM PLATE 6061-T6	
15	STIFFENER	1	1/2" x 3/8" ALUMINUM ANGLE - SURF FINISH 6061-T6	
16	STEM	1	3/8" ROUND COLD ROLLED STEEL, 1018	
17	PIV	1	3/8" HARDENED BRASS STEEL ONE END 3/8" BORE ALUMINUM CORE #30312AS03	
18	WASHER	1	3/8" x 1 1/2" DIA. 1/2" THICK HARDENED STEEL FINISHED	
19	BUSHING	1	WASHER - ALUMINUM - CORE # 30312AS03	
20	BEARING	1	1" ROUND COLD ROLLED STEEL, 1018	
21	SPACER PLATE	1	CHUTE FLANGE BEARING .505 INX .763 OD X 3/8" W PFT83	
		1	1/4" x 3/8" THICK ALUMINUM PLATE 6061-T6	

MATERIALS LIST

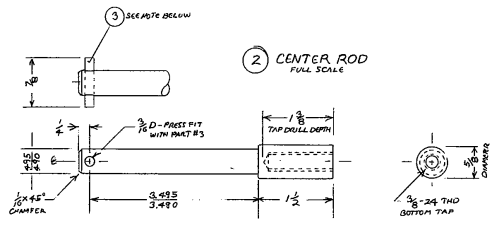
NO	PART NAME	QTY	MATERIAL-DESCRIPTION	SHEET
1	BODY	1	KILSBY-ROBERTS 1600, 120 WALL CDS METI CARBON STEEL TUBE	
2	CENTER ROD	1	3/8 ROUND COLD ROLLED STEEL 1018	
3	PIV	1	3/16 HARDENED BRASS STEEL DRUM PINS (3/16) 4078	
4	SPRING RETAINER	2	3/16 1/4 HARDENED STEEL WASHER, PLUMBER DIA # 38023A02A	
5	TRAYON WASHER	2	BELLEVILLE SPRING WASHER, GRADE 8 01000-0152	
6	ADJUSTER WASHER	20	BELLEVILLE SPRING WASHER GRADE 8 B1000-0505	
7	ADJUSTER WASHER	20	BELLEVILLE SPRING WASHER GRADE 8 B1000-0735	
8	DETRAPPING RINGS	1	WALDEES TRUARC INTERNAL R N 5000-100 OR EG.	
9	STUD CABLE END	1	MS 2125-824	
10	LOCK NUT	1	3/8-24 HEX, NYLOCK	
11	CABLE	AR	3/8 DIA AIRCRAFT CABLE	



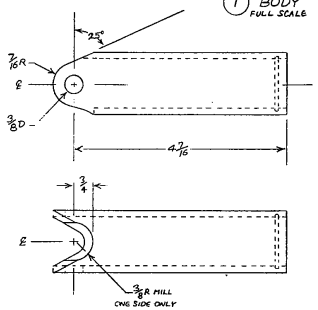
RETAINING RING GROOVE DETAIL
2X SCALE
FOR USE WITH WALDEES TRUARC INTERNAL SERIES
2 N 5000-100



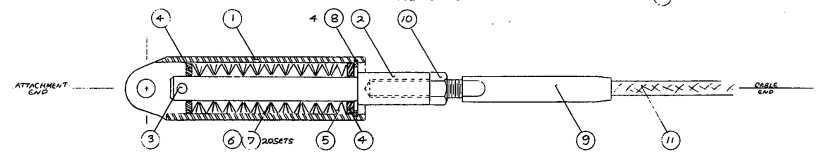
2 CENTER ROD
FULL SCALE



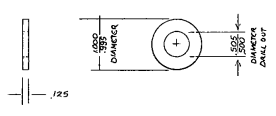
1 BODY
FULL SCALE



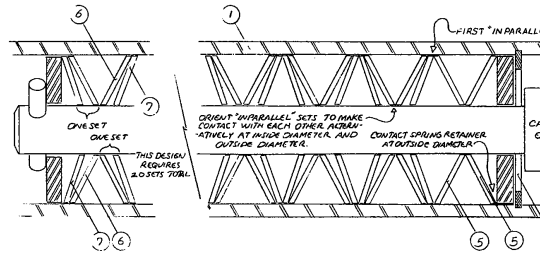
SHOCK ABSORBER ASSY DETAIL
FULL SCALE



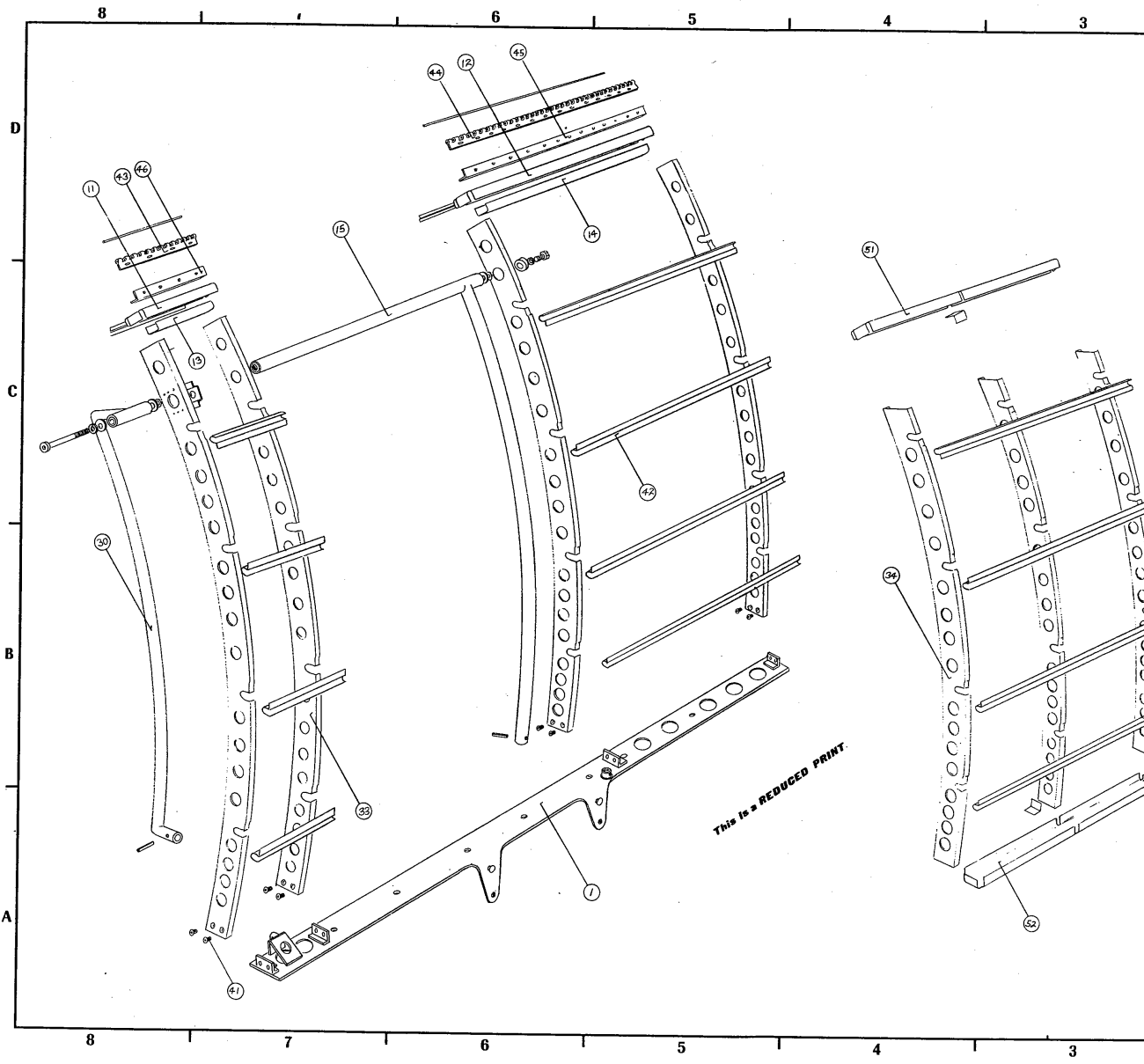
4 SPRING RETAINER
FULL SCALE



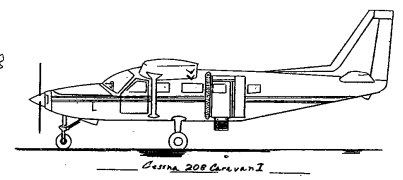
BELLEVILLE SPRING WASHER DETAIL
NOT TO SCALE
NOTE ORIENTATION CAREFULLY



UNLESS OTHERWISE SPECIFIED		DATE	REVISION	BY
TOLERANCES:	FRACTIONS ±			
	DECIMALS ±			
	ANGLES ±			
DIMENSIONS ARE IN INCHES				
BREAK SHARP EDGES				
DRAWN	WA KILROY	U.S. DEPT. OF AGRICULTURE FOREST SERVICE EQUIPMENT DEVELOPMENT CENTER MISSOULA, MONTANA		
DESIGNED	WA KILROY			
CHECKED				
APPROVED				
SCALE	NONE	TITLE HORIZONTAL CABLE SHOCK ABSORBER FOR CESSNA 208 & OTHER LIGHT APT		
DATE	9/86	SHEET	1 OF 1	MEDC-79/1

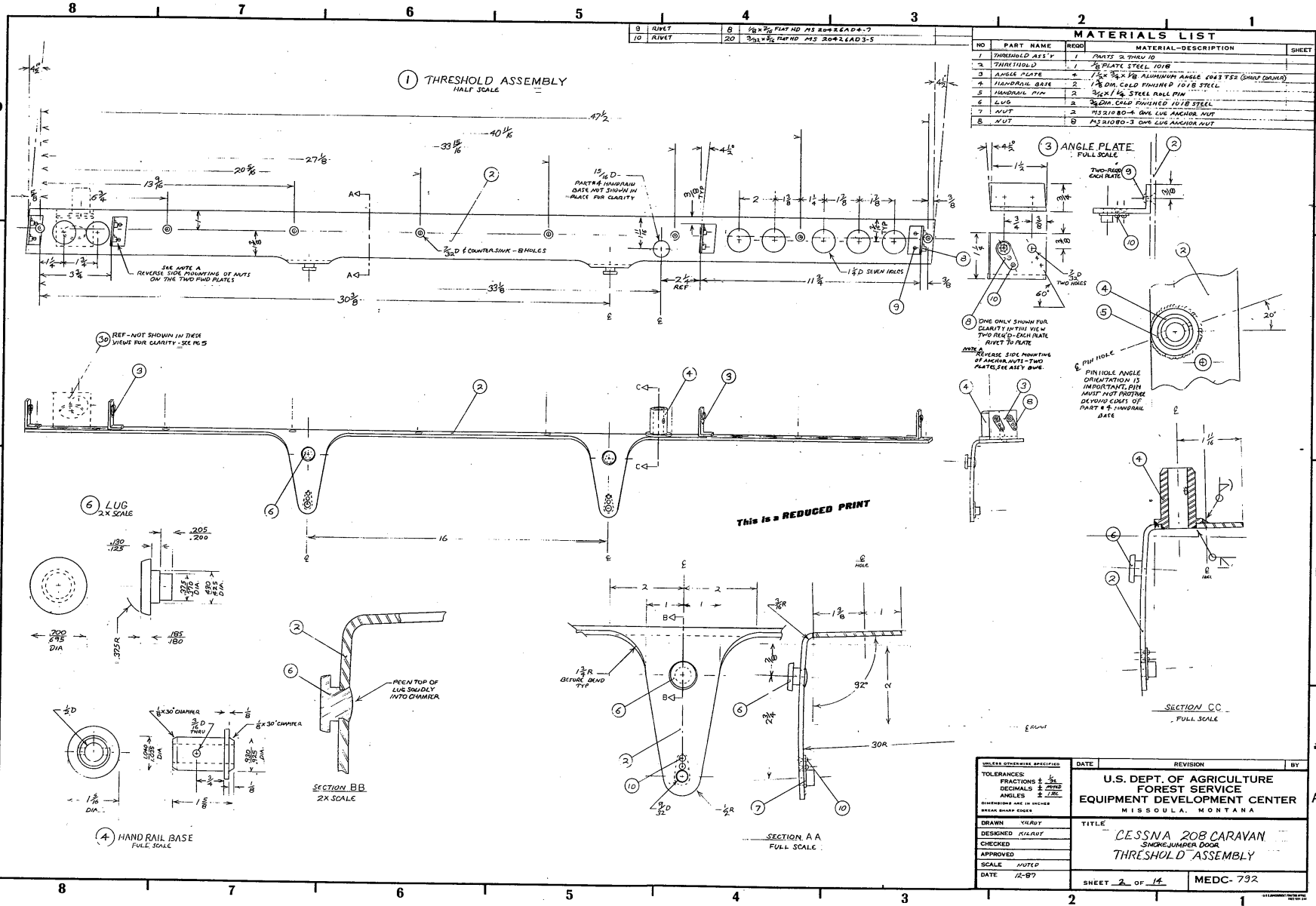


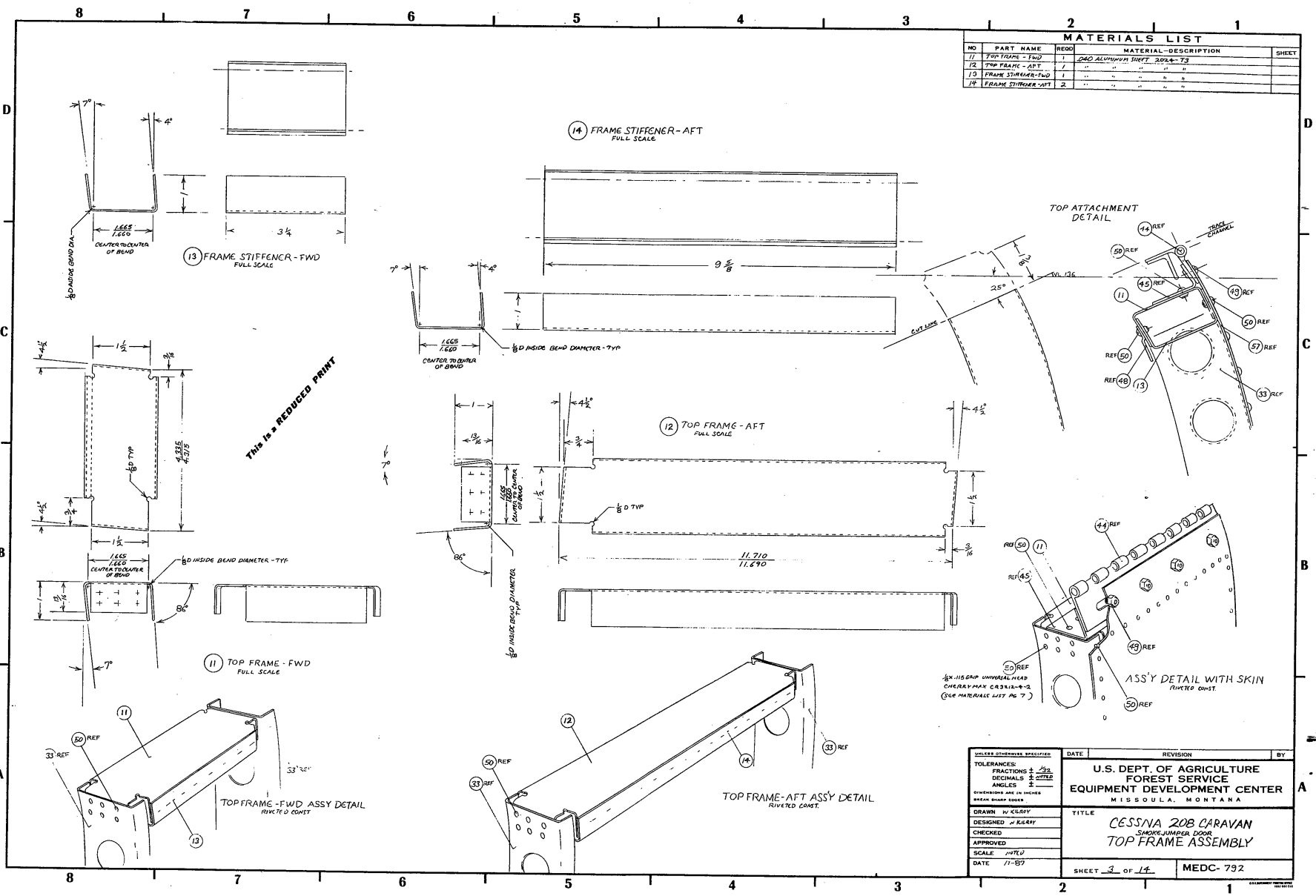
MATERIALS LIST				
NO	PART NAME	REQD	MATERIAL-DESCRIPTION	SHEET
1	TUBULAR SLIT	1	PARTS 2 THRU 10	2
11	TOP FRAME END	1	PART 11	3
12	TOP FRAME APT	1	PART 12	3
13	FRAME INTERMED END	1	PART 13	3
14	FRAME INTERMED APT	1	PART 14	3
15	HAND RAIL APT	1	PARTS 15 THRU 29	3
30	MIDC HANDRAIL	1	PARTS 31 THRU 32	4
33	STATIONARY	1	PARTS 31 THRU 32	5
34	STRUCTURE SIDEHEAD	4	PART 32	6
34	REMOVABLE DOOR	3	PART 34	6
41	DOOR SCREW	8	PART 41	6
42	STRINGS	12	PART 42	6
43	HINGE END	1	PART 43	6
44	HINGE APT	1	PART 44	6
45	AFT ANGLE PLATE	1	PART 45	7
46	END ANGLE PLATE	7	PART 46	7
51	DOOR TOP FRAME	1	PART 51	8
52	DOOR BASE FRAME	1	PART 52	8
ASSEMBLY		1	PART 52	8



UNLESS OTHERWISE SPECIFIED		DATE	REVISION	BY
TOLERANCES:				
FRACTIONS 1/16				
DECIMALS 1/10				
ANGLES 1/2				
DIMENSIONS ARE IN INCHES				
BREAK SHARP EDGES				
DRAWN BY KILROY		TITLE		
DESIGNED BY KILROY		CESSNA 208 CARAVAN		
CHECKED		SMOKE JUMPER DOOR		
APPROVED				
SCALE 1/8"=1'-0"				
DATE 1/70		SHEET 1 of 14		
		MEDC-792		

THIS IS A REDUCED PRINT.



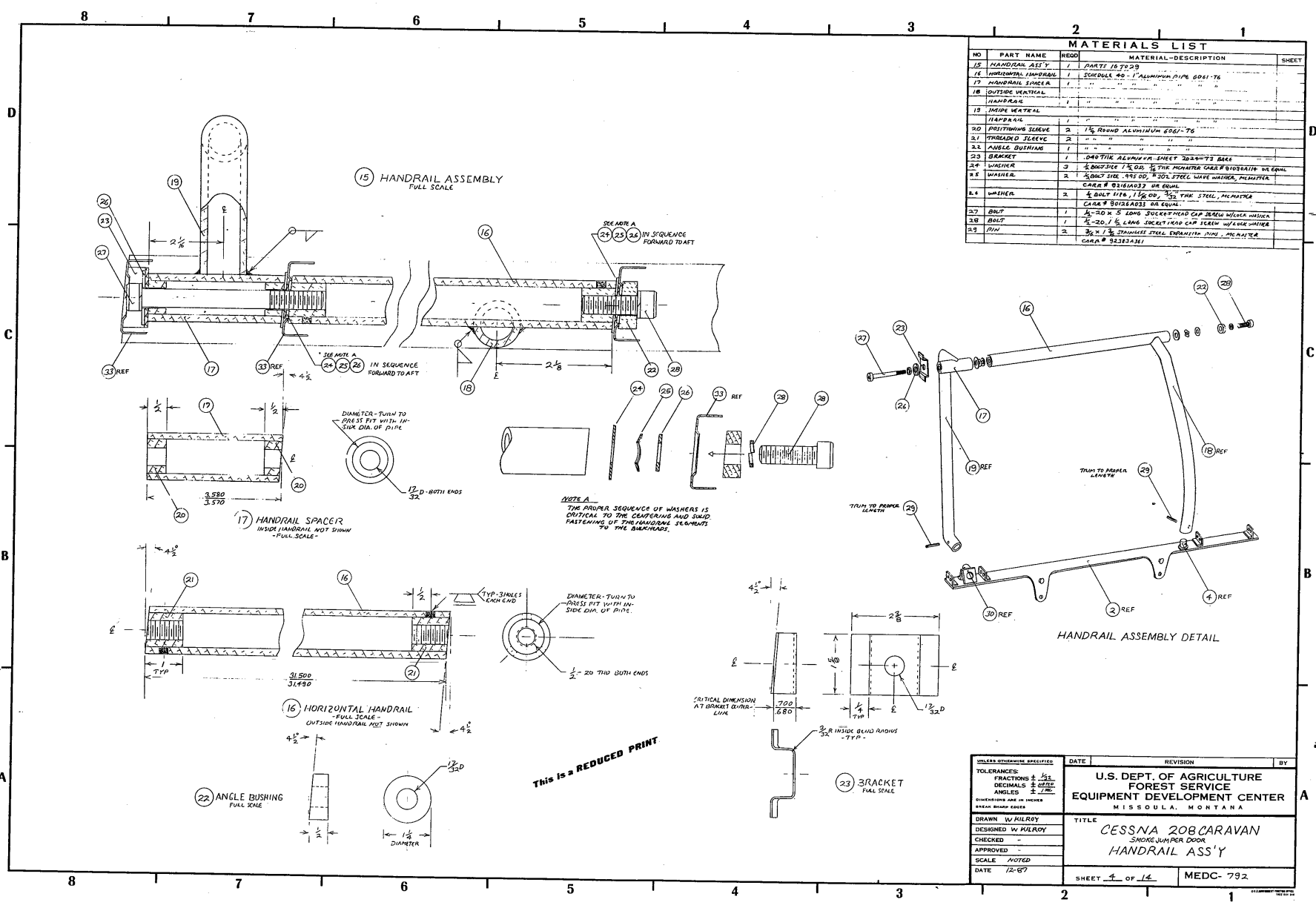


MATERIALS LIST				
NO.	PART NAME	REQD.	MATERIAL-DESCRIPTION	SHEET
11	TOP FRAME - FWD	1	240 ALUMINUM SHEET, 2024-T3	
12	TOP FRAME - AFT	1	" " " " " "	
13	FRAME STIFFENER-FWD	1	" " " " " "	
14	FRAME STIFFENER-AFT	2	" " " " " "	

TOLERANCES UNLESS OTHERWISE SPECIFIED	DATE	REVISION	BY
FRACTIONS ± 1/32			
DECIMALS ± 0.015			
ANGLES ± 1'			
DIMENSIONS ARE IN INCHES UNLESS SHOWN OTHERWISE			
DRAWN TO CLIP			
DESIGNED BY KLEBY			
CHECKED _____			
APPROVED _____			
SCALE NOTED			
DATE 11-57			
SHEET 3 OF 14			MEDC-792

U.S. DEPT. OF AGRICULTURE
 FOREST SERVICE
 EQUIPMENT DEVELOPMENT CENTER
 MISSOULA, MONTANA

TITLE
CESSNA 20B CARAVAN
 STAY-IN-JUNCTION DOOR
TOP FRAME ASSEMBLY



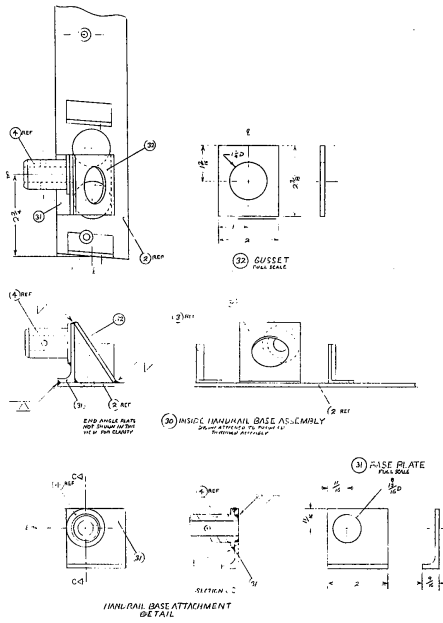
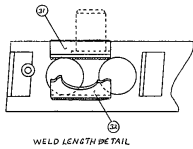
MATERIALS LIST				
NO	PART NAME	REQD	MATERIAL-DESCRIPTION	SHEET
15	HANDRAIL ASS'Y	1	PART 167929	
16	HORIZONTAL HANDRAIL	1	SCHEDULE 40 1" ALUMINUM PIPE 6061-T6	
17	HANDRAIL SPACER	1		
18	OUTSIDE VERTICAL HANDRAIL	1		
19	INSIDE VERTICAL HANDRAIL	1		
20	POSITIONING SLEEVE	2	1/4" ROUND ALUMINUM 6061-T6	
21	THREADED SLEEVE	2	"	
22	ANGLE BUSHING	1	"	
23	BRACKET	1	1/4" THICK ALUMINUM SHEET 2024-T3 BAKE	
24	WASHER	3	3/8" OD X 1/2" OD 304 STAINLESS STEEL CARE # 8126AD33 OR EQUAL	
25	WASHER	2	3/8" OD X 1/2" OD 304 STAINLESS STEEL CARE # 8126AD33 OR EQUAL	
26	WASHER	2	3/8" OD X 1/2" OD 304 STAINLESS STEEL CARE # 8126AD33 OR EQUAL	
27	BOLT	1	3/8" X 5 LONG SUCREX HEAD CAP SCREW UNSPEC W/SHIM	
28	BOLT	1	1/2" X 20 1/2 LONG SUCREX HEAD CAP SCREW UNSPEC W/SHIM	
29	PIN	2	3/8" X 1/2" STAINLESS STEEL EXPANDED END UNSPEC CARE # 82123431	

UNLESS OTHERWISE SPECIFIED	DATE	REVISION	BY
TOLERANCES:	U.S. DEPT. OF AGRICULTURE		
FRACTIONS ± 1/32	FOREST SERVICE		
DECIMALS ± 0.005	EQUIPMENT DEVELOPMENT CENTER		
ANGLES ± 1/2°	MISSOULA, MONTANA		
DIMENSIONS ARE IN INCHES	TITLE		
SHARP SHARP EDGES	CESSNA 208 CARAVAN		
	SHOW BUMP DOOR		
DRAWN W KILROY	HANDRAIL ASS'Y		
DESIGNED W KILROY	SCALE NOTED		
CHECKED -	DATE 12-87		
APPROVED -	SHEET 4 of 14		MEDC-792

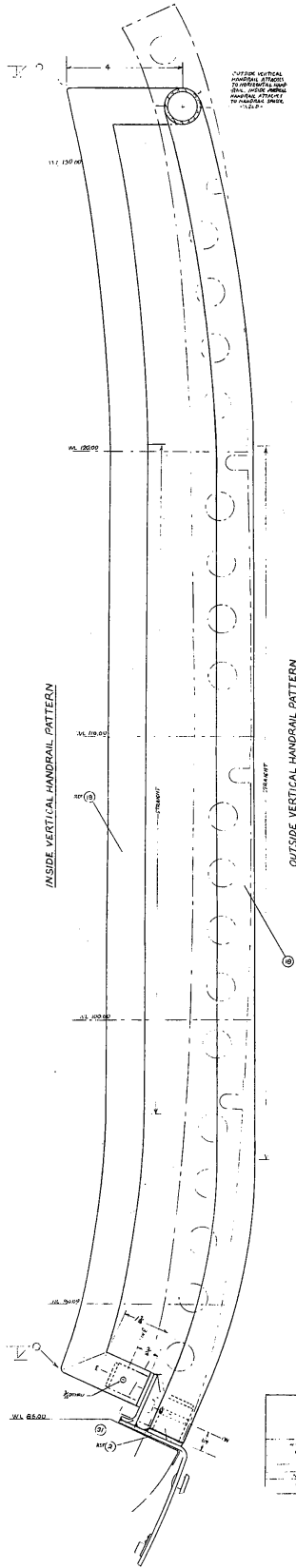
This is a REDUCED PRINT

11-13800

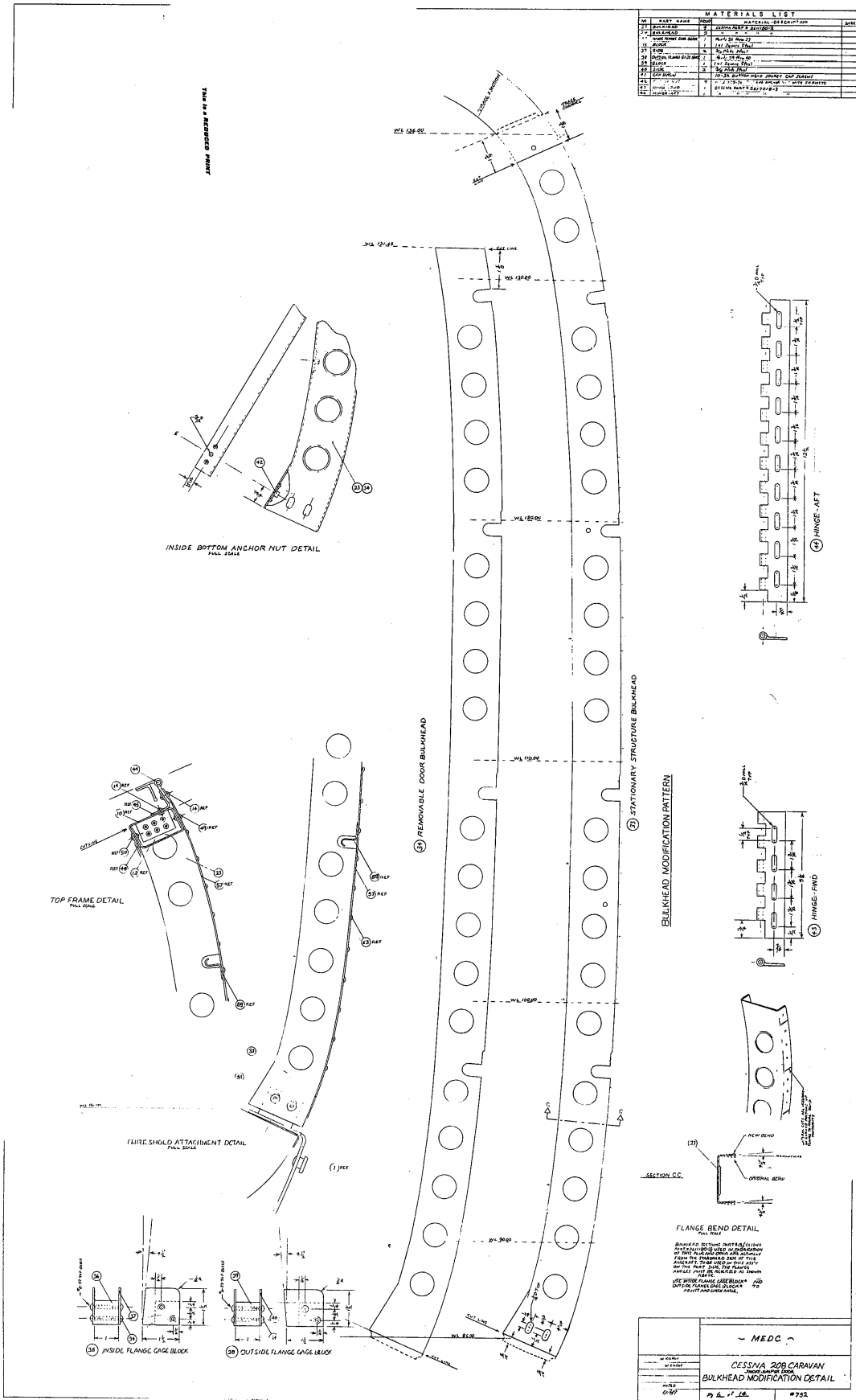
MATERIALS LIST			
NO	PART NAME	QTY	MATERIAL-DESCRIPTION
1	WELD	1	WELD
2	BASE PLATE	1	ALUMINUM
3	WASHER	1	ALUMINUM
4	SCREW	1	ALUMINUM



THIS IS A REQUIRED PRINT



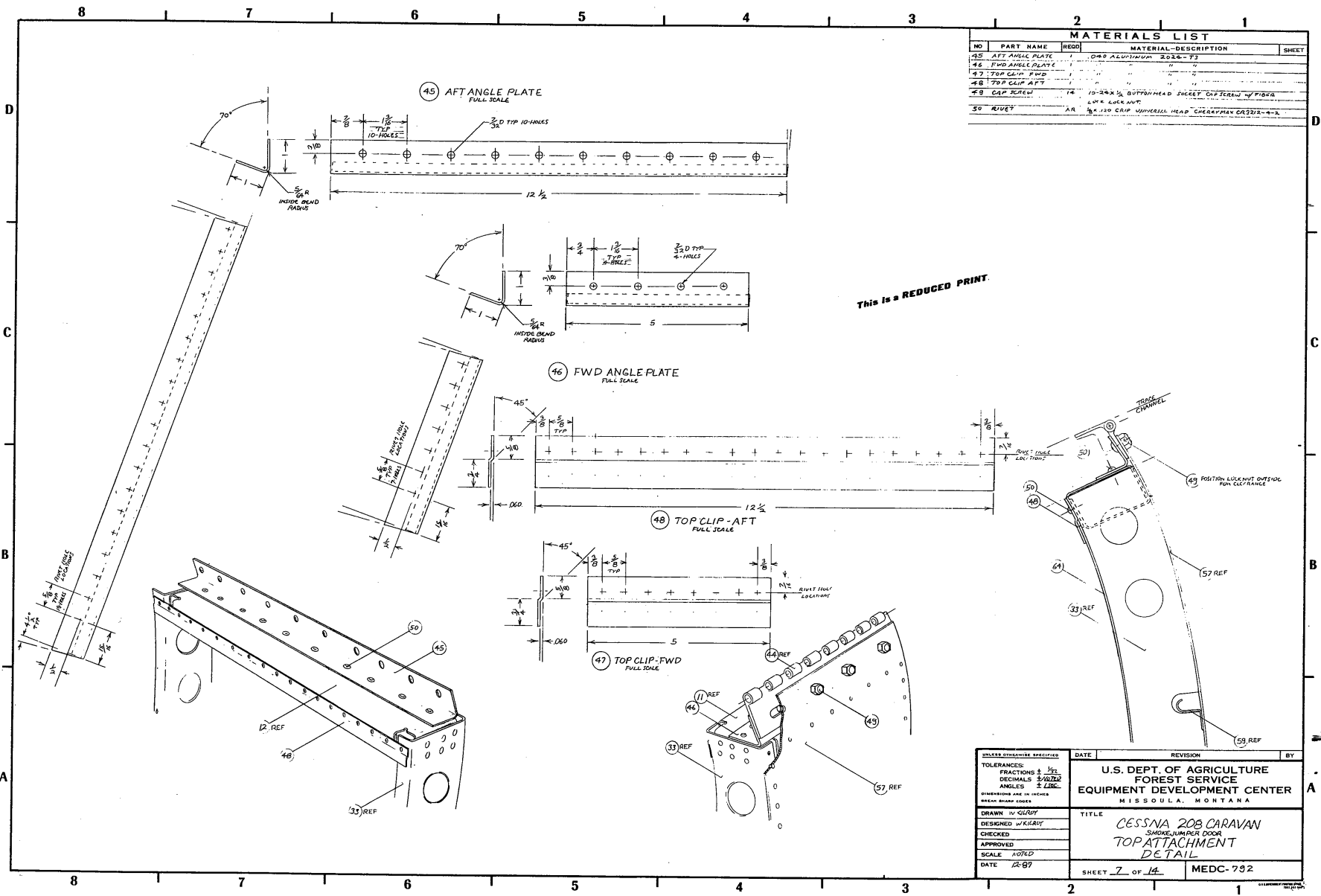
- MDC -	
CESSNA 208 CARAVAN	
HANDRAIL	
7.5.1.14	#732



NO.	MARK	QUANTITY	DESCRIPTION	UNIT
1	ALUMINUM	1	ALUMINUM SHEET	SHEET
2	ALUMINUM	2	ALUMINUM ANGLE	ANGLE
3	ALUMINUM	2	ALUMINUM CHANNEL	CHANNEL
4	ALUMINUM	2	ALUMINUM PLATE	PLATE
5	ALUMINUM	2	ALUMINUM ROD	ROD
6	ALUMINUM	2	ALUMINUM WIRE	WIRE
7	ALUMINUM	2	ALUMINUM TUBING	TUBING
8	ALUMINUM	2	ALUMINUM FITTING	FITTING
9	ALUMINUM	2	ALUMINUM BRACKET	BRACKET
10	ALUMINUM	2	ALUMINUM GAGE BLOCK	GAGE BLOCK
11	ALUMINUM	2	ALUMINUM BEND	BEND
12	ALUMINUM	2	ALUMINUM SECTION C-C	SECTION C-C

- MEDC -

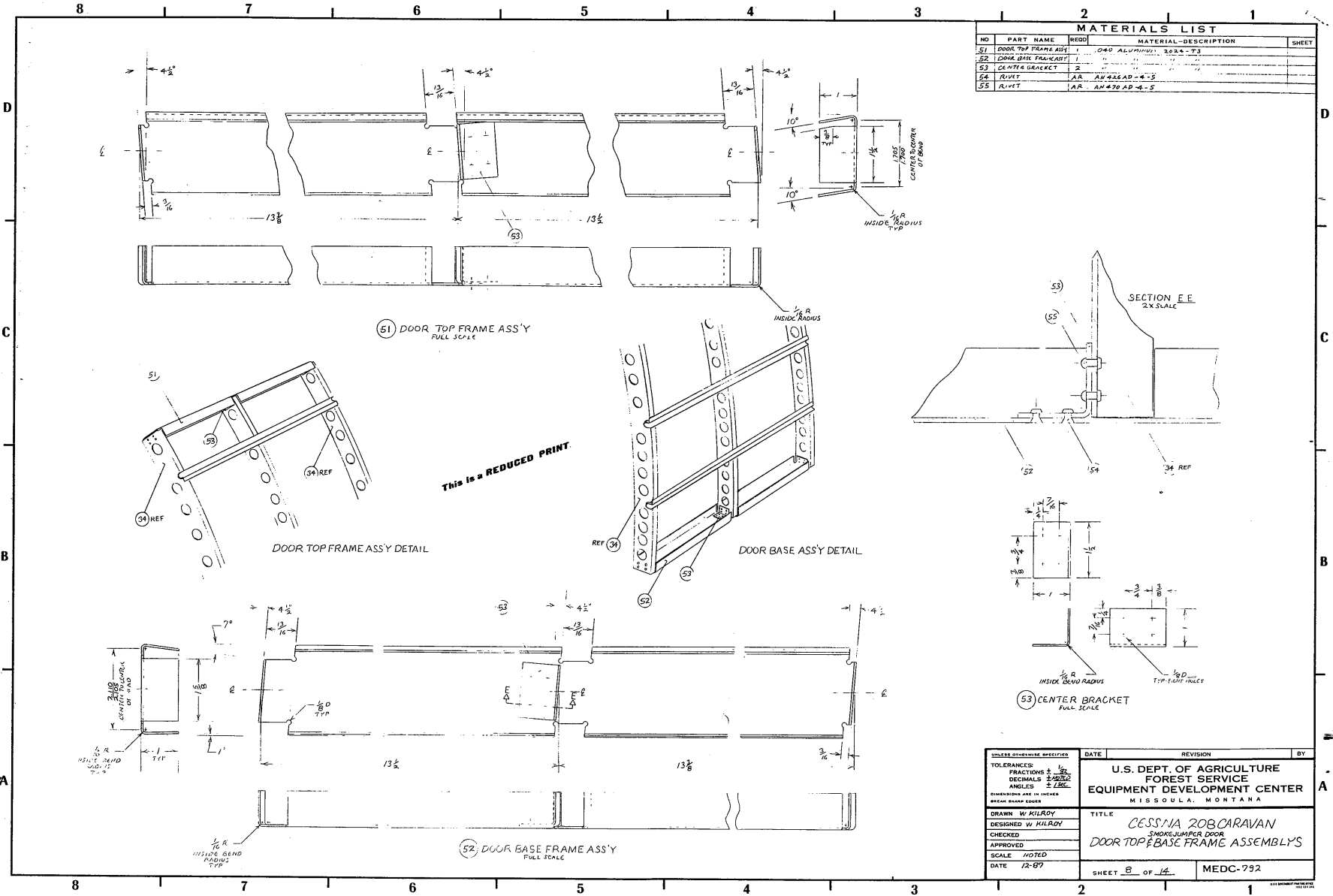
CESSNA 200 CARAVAN
BULKHEAD MODIFICATION DETAIL
P. L. J. S. #752

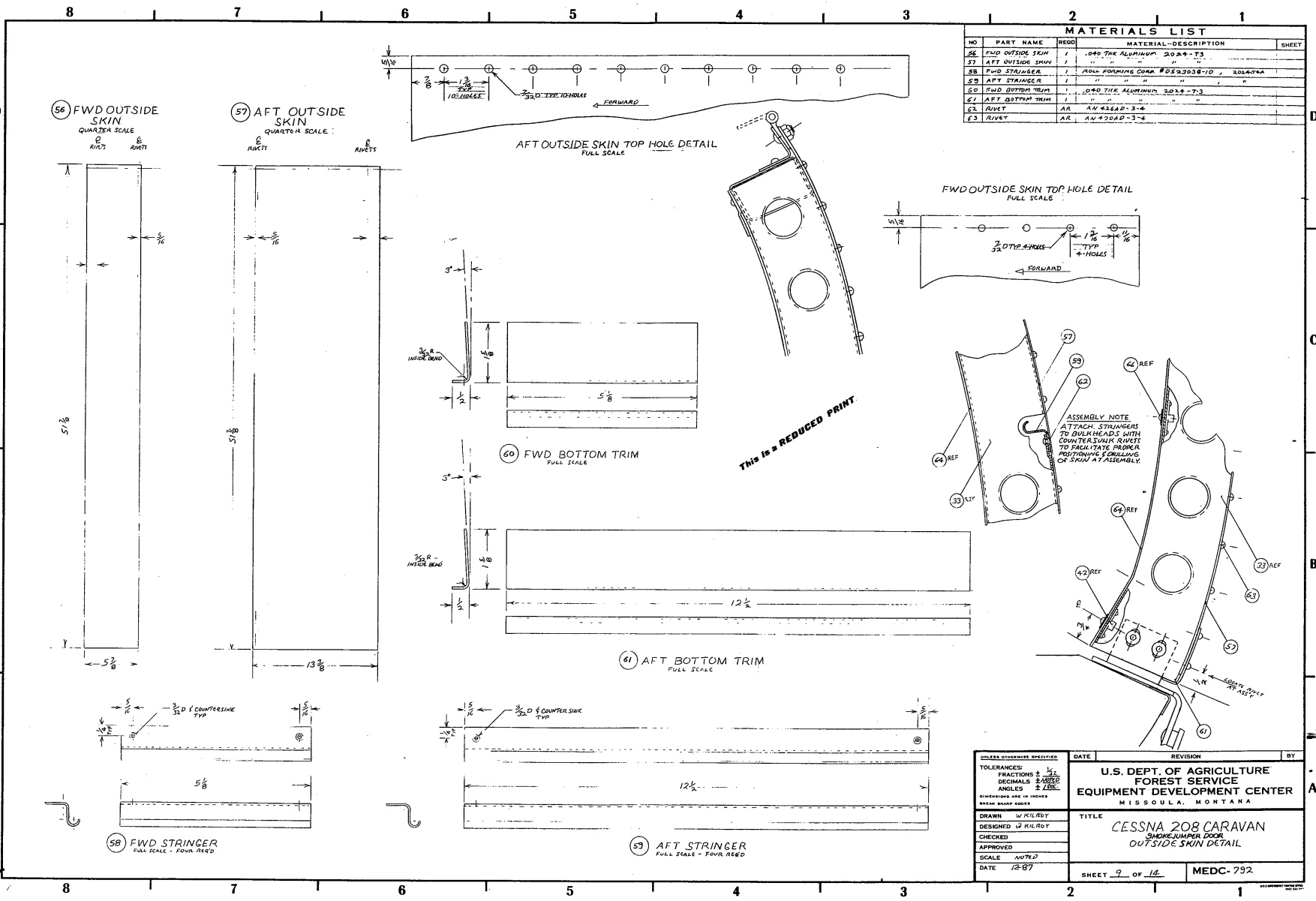


MATERIALS LIST				
NO	PART NAME	QTY	MATERIAL-DESCRIPTION	SHEET
45	AFT ANGLE PLATE	1	040 ALUMINUM 2024-T3	
46	FWD ANGLE PLATE	1	" "	
47	TOP CLIP-FWD	1	" "	
48	TOP CLIP-AFT	1	" "	
49	CAP SCREW	14	10-24X 1/2 BUTT HEAD SOCKET CAP SCREW BY FIBRO	
			LOCK W/NT	
50	RIVET	AR	1/4 120 CAP UNIVERSAL HEAD CHECKER MAX 2024-T3	

This is a REDUCED PRINT.

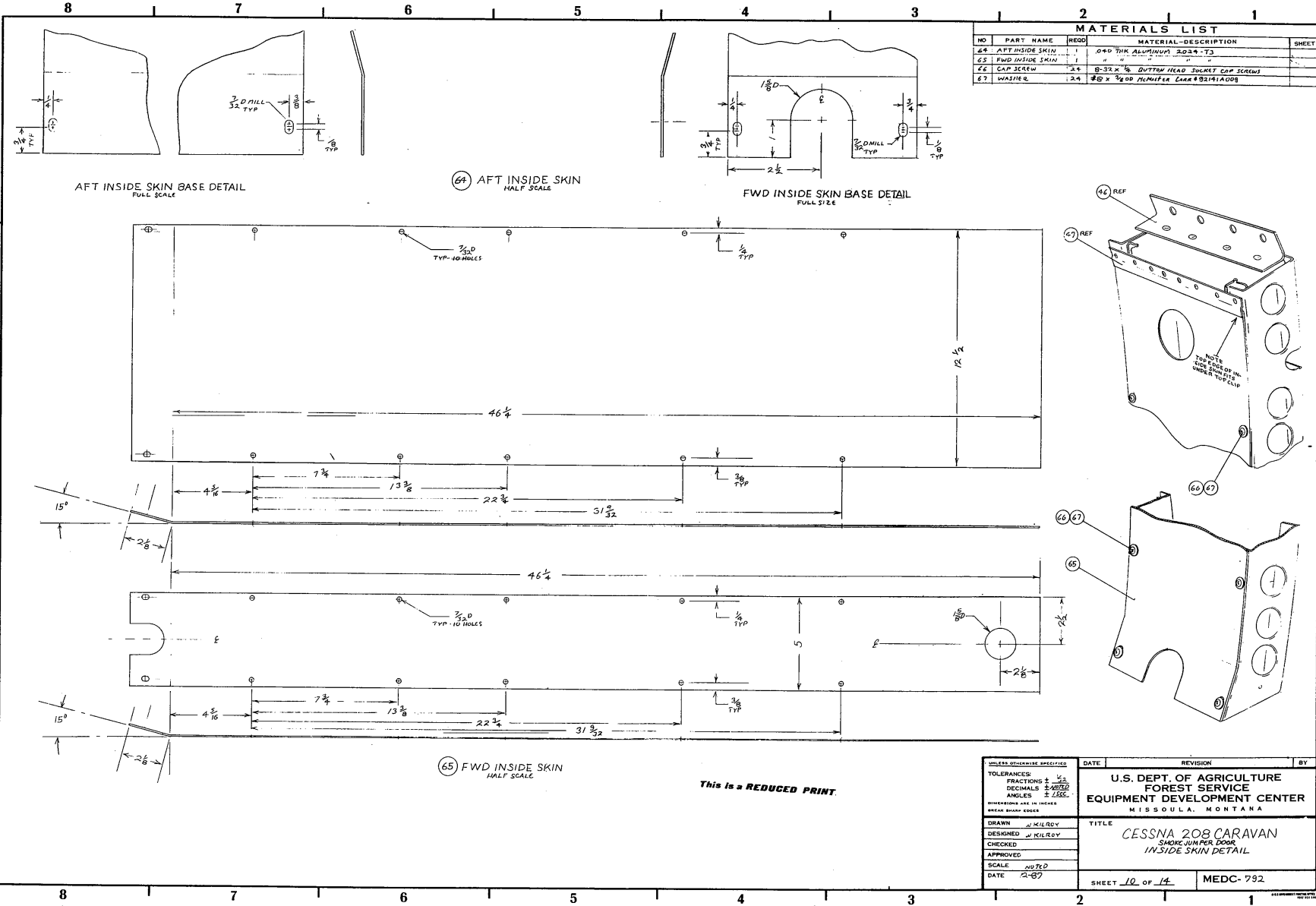
UNLESS OTHERWISE SPECIFIED	DATE	REVISION	BY
TOLERANCES: FRACTIONS $\pm \frac{1}{32}$ DECIMALS $\pm .002$ ANGLES $\pm .030^\circ$			
DIMENSIONS ARE IN INCHES BREAK SHARP EDGES			
DRAWN BY GLENN			
DESIGNED BY W. R. GALT			
CHECKED			
APPROVED			
SCALE NOTED			
DATE 12-87			
U.S. DEPT. OF AGRICULTURE FOREST SERVICE EQUIPMENT DEVELOPMENT CENTER MISSOULA, MONTANA			
TITLE CESSNA 208 CARAVAN SHOCK-ABSORBER DOOR TOP ATTACHMENT DETAIL			
SHEET 7 OF 14			MEDC-792





MATERIALS LIST			
NO	PART NAME	REQD	MATERIAL-DESCRIPTION
56	FWD OUTSIDE SKIN	1	.040 THK ALUMINUM 2024-T3
57	AFT OUTSIDE SKIN	1	" " " " " "
58	FWD STRINGER	1	ROLL FORMING CO. #DS23038-10 2024T3A
59	AFT STRINGER	1	" " " " " "
60	FWD BOTTOM TRIM	1	.040 THK ALUMINUM 2024-T3
61	AFT BOTTOM TRIM	1	" " " " " "
62	RIVET	AR	AN 4340-3-4
63	RIVET	AR	AN 720AD-3-4

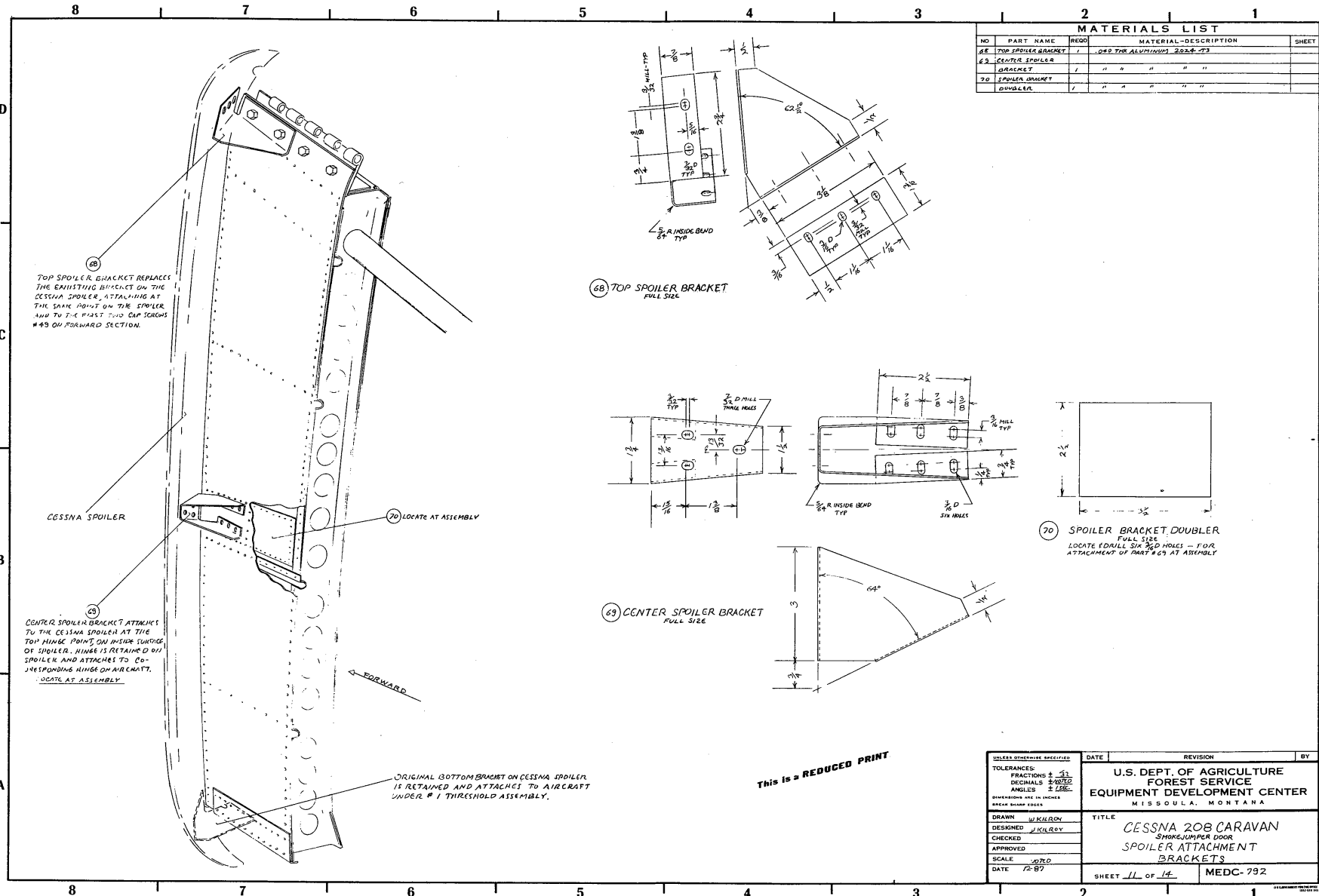
UNLESS OTHERWISE SPECIFIED		DATE	REVISION	BY
TOLERANCES:				
FRACTIONS: 1/16				
DECIMALS: 2 PLACES				
ANGLES: 1/2 DEG				
DIMENSIONS ARE IN INCHES				
BREAK SHARP EDGES				
DRAWN: W. KILROY		U.S. DEPT. OF AGRICULTURE FOREST SERVICE EQUIPMENT DEVELOPMENT CENTER MISSOULA, MONTANA		
DESIGNED: W. KILROY		TITLE		
CHECKED:		LESSNA 208 CARAVAN SHORE JUMPER DOOR OUTSIDE SKIN DETAIL		
APPROVED:		SCALE: NOTED		
DATE: 12-87		SHEET: 9 OF 14		MEDC-792



MATERIALS LIST				
NO	PART NAME	REQD	MATERIAL-DESCRIPTION	SHEET
64	AFT INSIDE SKIN	1	0.040 THK ALUMINUM 2024-T3	
65	FWD INSIDE SKIN	1	"	
66	CAP SCREW	24	B-32 X 1/8 BUTTWN HEAD SULKIT CAP SCREWS	
67	WASHER	24	1/8 X 3/16 ALUMINUM LOCKWASHERS	

UNLESS OTHERWISE SPECIFIED: TOLERANCES: FRACTIONS ± 1/32 DECIMALS ± 0.005 ANGLES ± 15' DIMENSIONS ARE IN INCHES BREAK SHARP EDGES	DATE	REVISION	BY
		U.S. DEPT. OF AGRICULTURE FOREST SERVICE EQUIPMENT DEVELOPMENT CENTER MISSOULA, MONTANA	
DRAWN J. KILROY DESIGNED J. KILROY CHECKED APPROVED SCALE 2:1 DATE 2-67	TITLE CESSNA 208 CARAVAN SHOCK BUMPER DOOR INSIDE SKIN DETAIL		
	SHEET 10 of 14	MEDC-792	

This is a REDUCED PRINT.



TOP SPOILER BRACKET REPLACES THE EXISTING BRACKET ON THE CESSNA SPOILER, ATTACHING AT THE SAME POINT ON THE SPOILER AND TO THE PLAST TUB CAP SCREWS #49 ON FORWARD SECTION.

CESSNA SPOILER

LOCATE AT ASSEMBLY

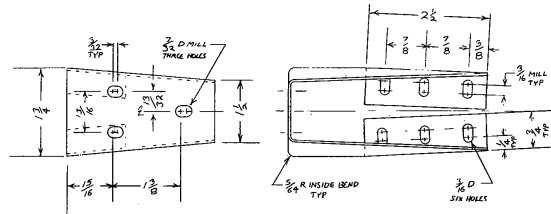
CENTER SPOILER BRACKET ATTACHES TO THE CESSNA SPOILER AT THE TOP HINGE POINT, ON INSIDE SURFACE OF SPOILER. HINGE IS RETAINED ON SPOILER AND ATTACHES TO CORRESPONDING HINGE ON AIRCRAFT. LOCATE AT ASSEMBLY.

FORWARD

ORIGINAL BOTTOM BRACKET ON CESSNA SPOILER IS RETAINED AND ATTACHED TO AIRCRAFT UNDER # 1 THRESHOLD ASSEMBLY.

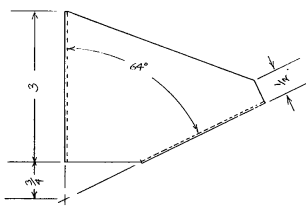
MATERIALS LIST				
NO	PART NAME	REQD	MATERIAL-DESCRIPTION	SHEET
68	TOP SPOILER BRACKET	1	Q&D TYP ALUMINUM 2024-T3	
69	CENTER SPOILER BRACKET	1	" " " " " "	
70	SPOILER BRACKET DOUBLER	1	" " " " " "	

68 TOP SPOILER BRACKET FULL SIZE



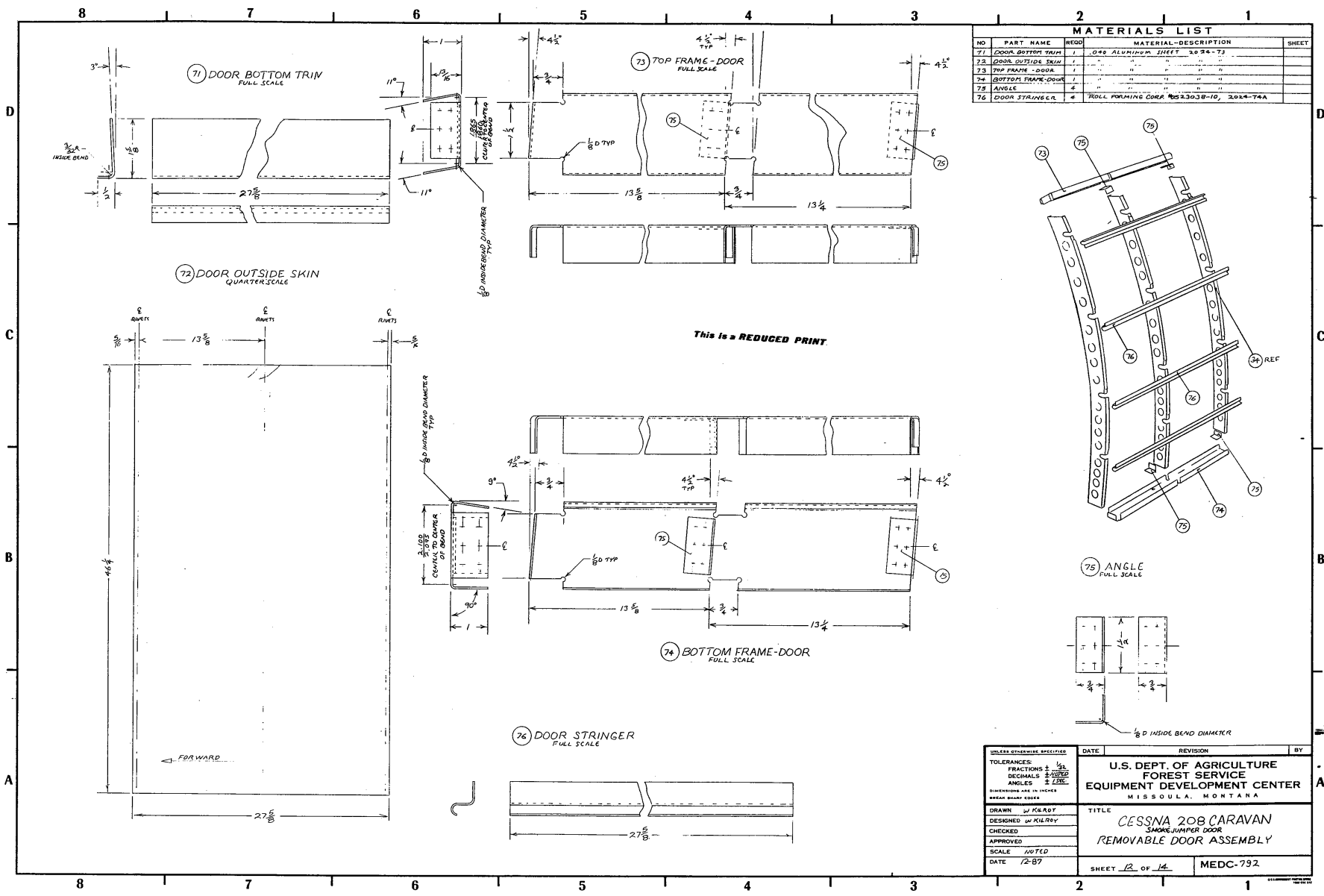
70 SPOILER BRACKET DOUBLER FULL SIZE LOCATE 1/8" DIA HOLES FOR ATTACHMENT OF PART #69 AT ASSEMBLY

69 CENTER SPOILER BRACKET FULL SIZE

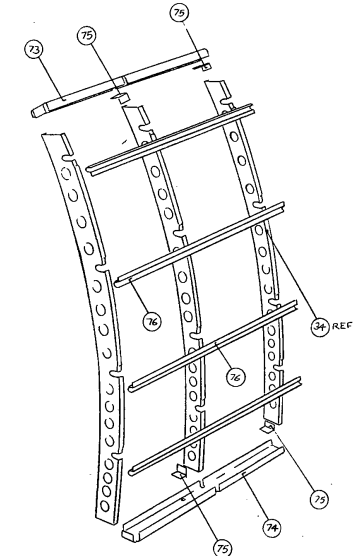


This is a REDUCED PRINT

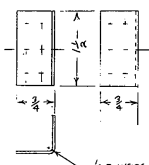
UNLESS OTHERWISE SPECIFIED	DATE	REVISION	BY
TOLERANCES: FRACTIONS ± .01 DECIMALS ± .005 ANGLES ± .1 DEG			
DESIGNED		U.S. DEPT. OF AGRICULTURE FOREST SERVICE EQUIPMENT DEVELOPMENT CENTER MISSOULA, MONTANA	
DRAWN		TITLE	
CHECKED		CESSNA 20B CARAVAN SMOKEJUMPER DOOR SPOILER ATTACHMENT BRACKETS	
APPROVED			
SCALE 1/2" = 1"			
DATE 7-87		SHEET 11 of 14	MEDC-792



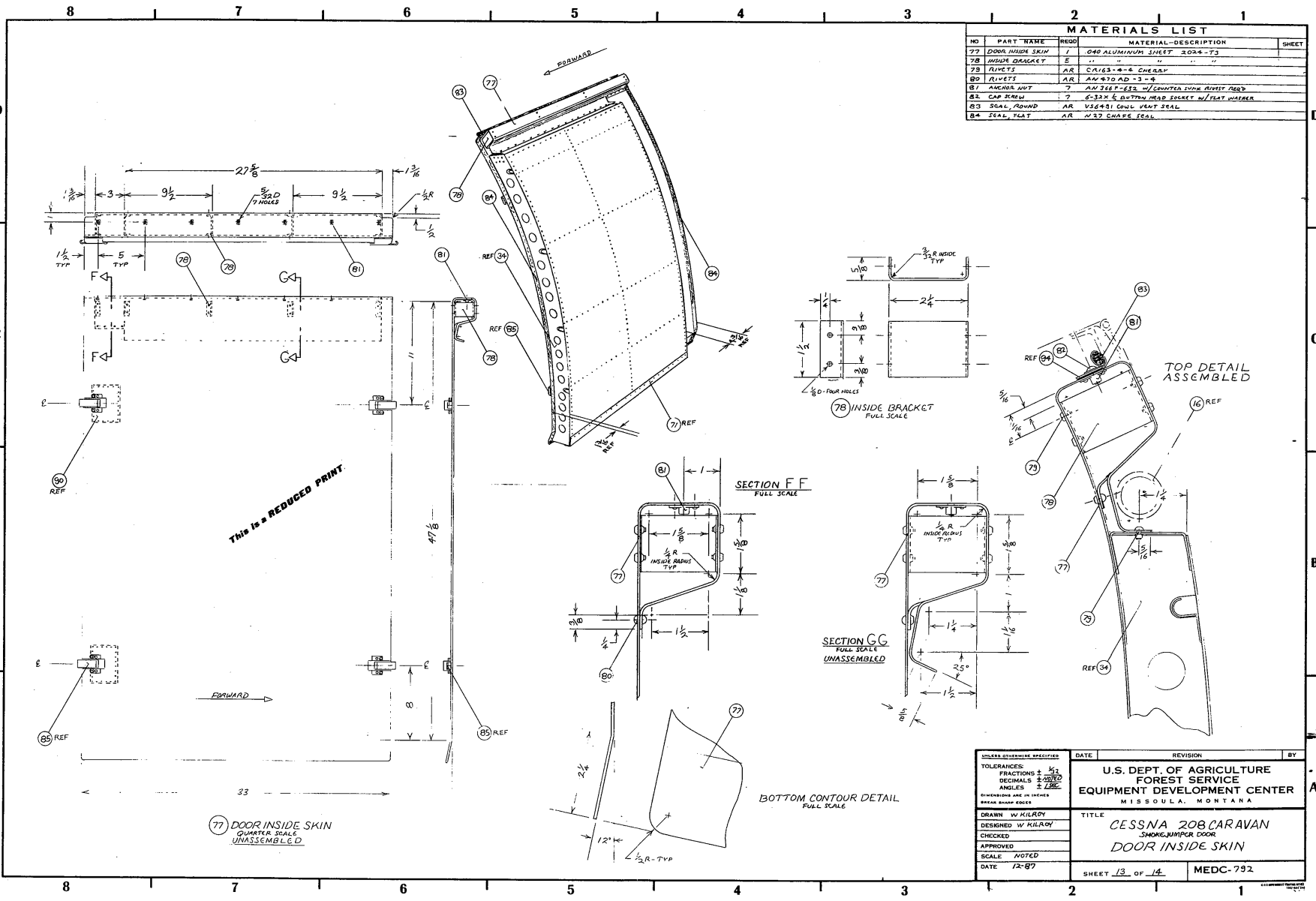
MATERIALS LIST			
NO.	PART NAME	REQD.	MATERIAL DESCRIPTION
71	DOOR BOTTOM TRIM	1	ORG. ALUMINUM SHEET 20 94-T1
72	DOOR OUTSIDE SKIN	1	"
73	TOP FRAME-DOOR	1	"
74	BOTTOM FRAME-DOOR	1	"
75	ANGLE	2	"
76	DOOR STRINGER	4	ROLL FORMING CORR. #023038-10, 2014-T4A



75 ANGLE
FULL SCALE



UNLESS OTHERWISE SPECIFIED		DATE	REVISION	BY
TOLERANCES:	FRACTIONS ± 1/32			
	DECIMALS ± 0.005			
	ANGLES ± 1/2°			
DIMENSIONS ARE UNLESS				
MESH SHARP EDGES				
DRAWN BY KILROY	TITLE			
DESIGNED BY KILROY	CESSNA 208 CARAVAN SHOCK JUMPER DOOR REMOVABLE DOOR ASSEMBLY			
CHECKED				
APPROVED				
SCALE 1/4" = 1"				
DATE 12-87				
	SHEET 12 OF 14			
				MEDC-792



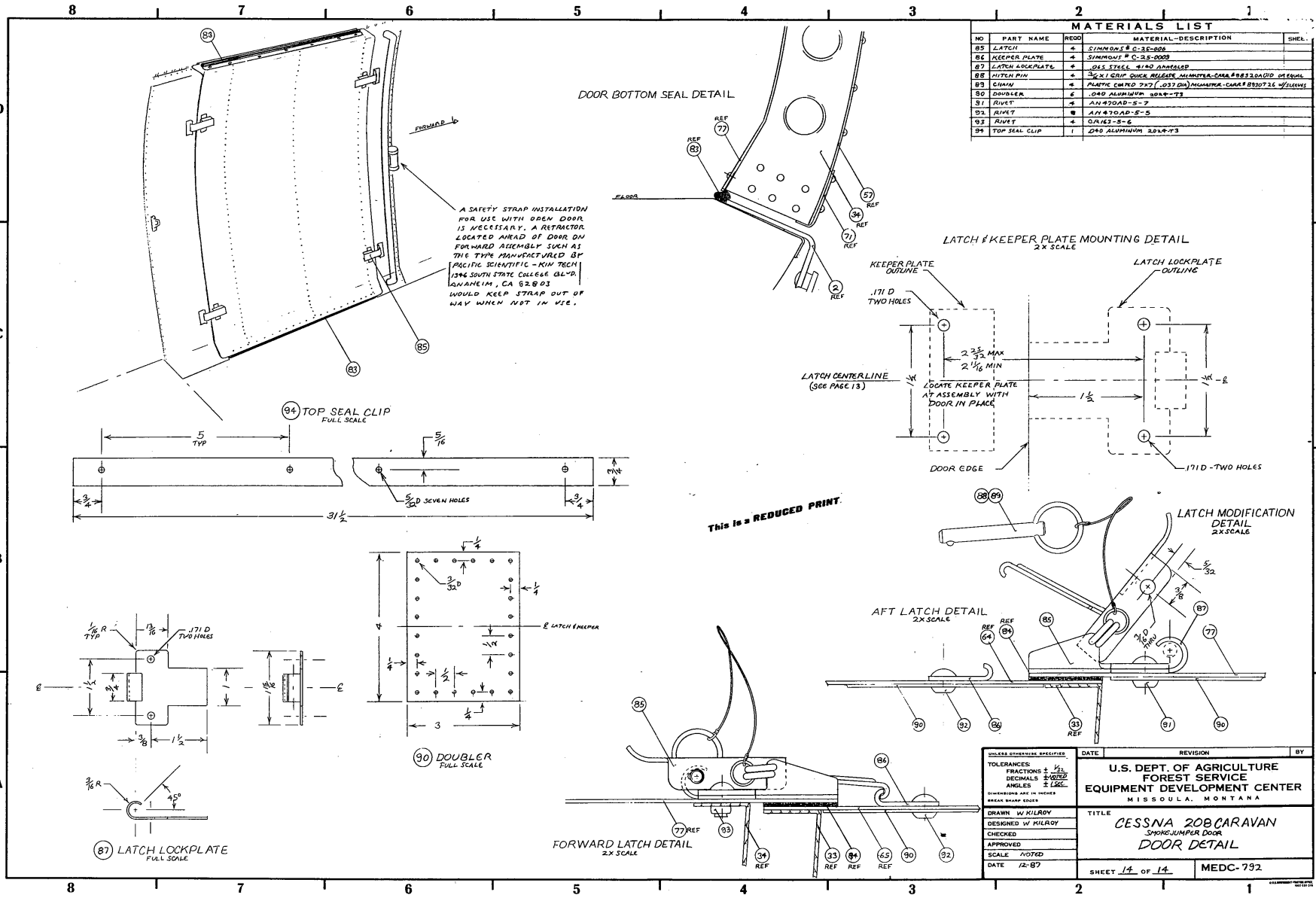
MATERIALS LIST				
NO	PART NAME	REQD	MATERIAL-DESCRIPTION	SHEET
77	DOOR INSIDE SKIN	1	040 ALUMINUM SHEET 20x4x.73	
78	INSIDE BRACKET	5	" " " " " "	
79	RIVETS	AR	CA163-#4 CHERAP	
80	RIVETS	AR	AN 430 AD-3-#4	
81	ANGULAR LUT	7	AN 717-#12 W/QUARTER LOCK ANGLE HEAD	
82	CAP SCREW	7	6-32X 1/2 BUTTIN HEAD SOCKET W/FLAT WASHER	
83	SEAL, ROUND	AR	V36481 COUL VENT SEAL	
84	SEAL, FLAT	AR	N 37 SHAPE SEAL	

UNLESS OTHERWISE SPECIFIED	DATE	REVISION	BY
TOLERANCES: FRACTIONS $\pm \frac{1}{32}$ DECIMALS $\pm .005$ ANGLES $\pm 1^\circ$			
DIVISIONS ARE IN INCHES BREAK SHARP EDGES			
DRAWN W KILROY			
DESIGNED W KILROY			
CHECKED			
APPROVED			
SCALE - NOTED			
DATE 12-87			

U.S. DEPT. OF AGRICULTURE
 FOREST SERVICE
 EQUIPMENT DEVELOPMENT CENTER
 MISSOULA, MONTANA

TITLE
 CESSNA 208 CARAVAN
 SMOKEY JUMPER DOOR
 DOOR INSIDE SKIN

SHEET 13 OF 14
 MEDC-792



NO	PART NAME	REQD	MATERIAL-DESCRIPTION	SHEL
85	LATCH	4	SIMMONS # C-3E-806	
86	KEEPER PLATE	4	SIMMONS # C-3E-0009	
87	LATCH LOCKPLATE	4	QSL STEEL 3/160 ANATLSP	
88	LATCH PIN	4	3/8 X 1/2 INCH QUICK RELEASE MOUNTING-CAM # B82072610 1/2 INCH	
89	CHAIN	4	PLASTIC CAMPO 293 (.037 DIA) MOUNTING-CAM # B82072610 WILLIAMS	
90	DOUBLER	6	.040 ALUMINUM 8048-T3	
91	RIVET	4	AN 420AD-S-7	
92	RIVET	4	AN 420AD-S-5	
93	RIVET	4	QA42-S-6	
94	TOP SEAL CLIP	1	.040 ALUMINUM 8048-T3	

This is a REDUCED PRINT.

UNLESS OTHERWISE SPECIFIED		DATE	REVISION	BY		
TOLERANCES FRACTIONS ± 1/32 DECIMALS ± 0.005 ANGLES ± 1/2°		U.S. DEPT. OF AGRICULTURE FOREST SERVICE EQUIPMENT DEVELOPMENT CENTER MISSOULA, MONTANA				
DIMENSIONS ARE IN INCHES BREAK SHOWN ELSEWHERE						
DRAWN: W. KILROY					TITLE	
DESIGNED: W. KILROY					CESSNA 208 CARAVAN SMOKEJUMPER DOOR DOOR DETAIL	
CHECKED:					SCALE: NOTED	
APPROVED:		DATE: 12-87				
		SHEET 14 of 14		MEDC-792		