

CESSNA 700

CESSNA 206

NOTE: IN 1992, THE CESSNA 206 WAS REMOVED FROM THE LIST OF APPROVED SMOKEJUMPING AIRCRAFT. DRAWINGS ARE INCLUDED FOR USERS WHO MAY WANT TO CONFIGURE THIS AIRCRAFT FOR CARGO DROPPING.

Accessories:

MEDC-680- Cessna 206 SJ Anchor & Door
STC Strength: 2,000 pounds
STC #: SA1607NM

MEDC-692- Cessna 206 SJ Accessories,
Handrail, Floor, & Door Boot

United States of America
Department of Transportation — Federal Aviation Administration
Supplemental Type Certificate

Number SA1607NM

This certificate, issued to U. S. Forest Service

certifies that the change in the type design for the following product with the limitations and conditions therefor as specified hereon meets the airworthiness requirements of Part 3 of the Civil Air Regulations.

Original Product — Type Certificate Number: A4CE
Make: Cessna
Model: 206 Series

Description of Type Design Change: Installation of a MEDC static line anchor and door modification for smoke jumper application in accordance with U. S. Forest Service Drawing No. MEDC-680, Sheets 1 and 2.

Limitations and Conditions: Approval of this change in type design applies to the above model aircraft only. This approval should not be extended to aircraft of this model on which other previously approved modifications are incorporated unless it is determined that the relationship between this change and any of those other previously approved modifications, including changes in type design, will introduce no adverse effect upon the airworthiness of that aircraft. A copy of this Certificate shall be maintained as part of the permanent records for the modified aircraft.

This certificate and the supporting data which is the basis for approval shall remain in effect until surrendered, suspended, revoked, or a termination date is otherwise established by the Administrator of the Federal Aviation Administration.

Date of application: March 19, 1982

Date issued:

Date of issuance: April 19, 1982

Date amended:



By direction of the Administrator

Darrell M. Pederman
(Signature)

acting
Chief, Seattle Area Aircraft
Certification Office, ANM-100S

(Title)

Any alteration of this certificate is punishable by a fine of not exceeding \$1,000, or imprisonment not exceeding 3 years, or both.

This certificate may be transferred in accordance with FAR 21.47.



U.S. Department
of Transportation
**Federal Aviation
Administration**

Northwest Mountain Region
Colorado, Idaho, Montana,
Oregon, Utah, Washington,
Wyoming

FAA Building
King County Int'l Airport
Seattle, Washington 98108

APR 19 1982

U. S. Forest Service
Aerial Fire Depot, Box 6
Johnson Bell Field
Missoula, Montana 59802


Gentlemen:

We have enclosed Supplemental Type Certificate No. SA1607NM, which approves the installation of a MEDC static line anchor and door modification for smoke jumper application in accordance with U. S. Forest Service Drawing No. MEDC-680, Sheets 1 and 2 on Cessna Model 206 Series.

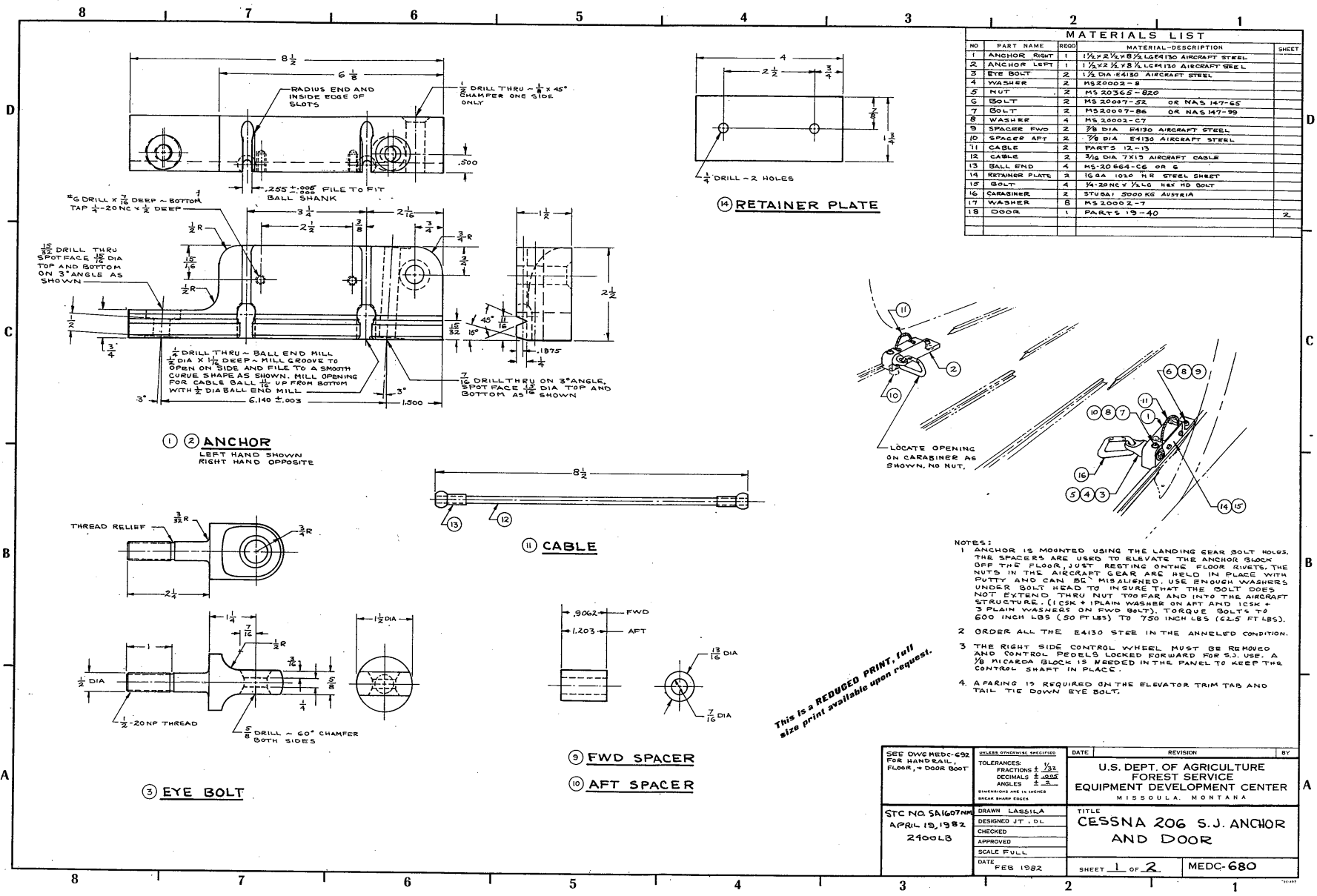
The Certificate may be transferred or made available to others by means such as a licensing arrangement in accordance with FAR 21.47.

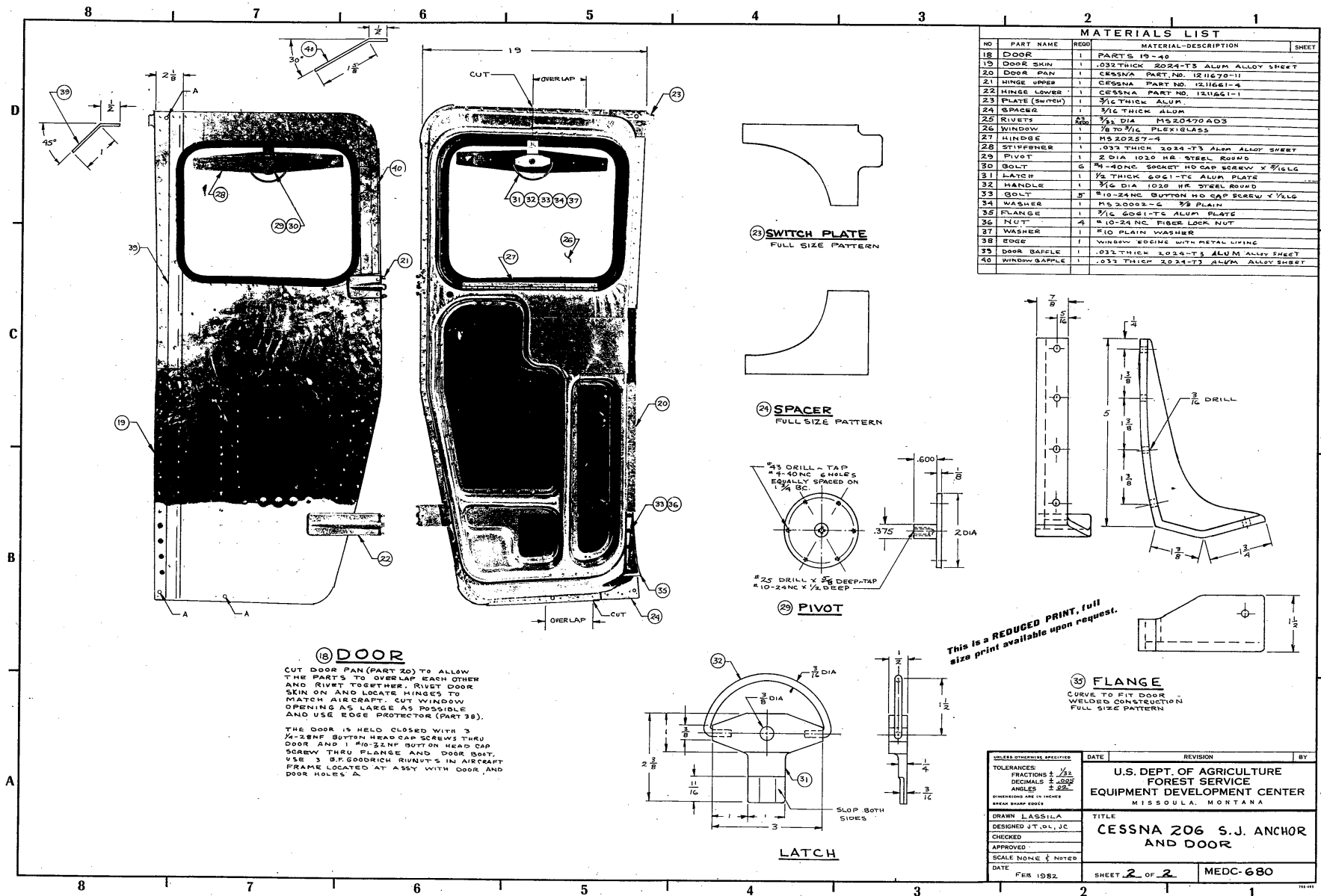
If you plan to manufacture replacement or modification parts for sale in conformance with approved data listed on the Certificate, you are required to comply with Section 21.303 of the Federal Aviation Regulations. A Parts Manufacturer Approval (PMA) may be issued under the provisions of FAR 21.303(d) when you submit a statement certifying that you have established a fabrication inspection system as required by FAR 21.303(h). The identification requirements for parts produced under a PMA are in FAR Part 45, Section 45.15. Your statement may be in letter form, with a reference to the STC number, and should be addressed to: Federal Aviation Administration, FAA Building, Boeing Field, Seattle, Washington 98108, Attention: Chief, Manufacturing Inspection Branch, ANM-180S.

Sincerely,

for 
Don C. Jacobsen
Chief, Seattle Area Aircraft
Certification Office, ANM-100S

Enclosure





MATERIALS LIST			
NO	PART NAME	REQD	MATERIAL-DESCRIPTION
18	DOOR	1	PARTS 19-40
19	DOOR SKIN	1	.032 THICK 2024-T3 ALUM ALLOY SHEET
20	DOOR PAN	1	CESSNA PART NO. 1211479-11
21	HINGE UPPER	1	CESSNA PART NO. 1211481-4
22	HINGE LOWER	1	CESSNA PART NO. 1211481-1
23	PLATE (SWITCH)	1	3/16 THICK ALUM.
24	SPACER	23	3/16 THICK ALUM.
25	RIVETS	23	3/16 DIA MS20470 A03
26	WINDOW	1	7/8 TO 3/16 PLEXIGLASS
27	HINGE	1	MS 20257-4
28	STIFFENER	1	.032 THICK 2024-T3 ALUM ALLOY SHEET
29	PIVOT	1	2 DIA 1020 HR STEEL ROUND
30	BOLT	4	3/4-40NC SOCKET HD CAP SCREW X 3/16 LG
31	LATCH	1	1/2 THICK 6061-TC ALUM PLATE
32	HANDLE	1	3/16 DIA 1020 HR STEEL ROUND
33	BOLT	3	3/10-24NC BUTTON HD CAP SCREW X 1/2 LG
34	WASHER	1	MS 20022-6 3/8 PLAIN
35	FLANGE	1	3/16 6061-TC ALUM PLATE
36	NUT	4	1/4 10-24 NC FIBER LOCK NUT
37	WASHER	1	1/10 PLAIN WASHER
38	EDGE	1	WINDOW EDGE WITH METAL WING
39	DOOR GAFFLE	1	.032 THICK 2024-T3 ALUM ALLOY SHEET
40	WINDOW GAFFLE	1	.032 THICK 2024-T3 ALUM ALLOY SHEET

15 DOOR
 CUT DOOR PAN (PART 20) TO ALLOW THE PARTS TO OVERLAP EACH OTHER AND RIVET TOGETHER. RIVET DOOR SKIN ON AND LOCATE HINGES TO MATCH AIRCRAFT. CUT WINDOW OPENING AS LARGE AS POSSIBLE AND USE EDGE PROTECTOR (PART 38).
 THE DOOR IS HELD CLOSED WITH 3 1/4-28NF BUTTON HEAD CAP SCREWS THRU DOOR AND 1 #10-24NF BUTTON HEAD CAP SCREW THRU FLANGE AND DOOR BOLT. USE 3 B.F. GOODRICH RIVETS IN AIRCRAFT FRAME LOCATED AT ASSY WITH DOOR AND DOOR HOLES A.

23 SWITCH PLATE
 FULL SIZE PATTERN

24 SPACER
 FULL SIZE PATTERN

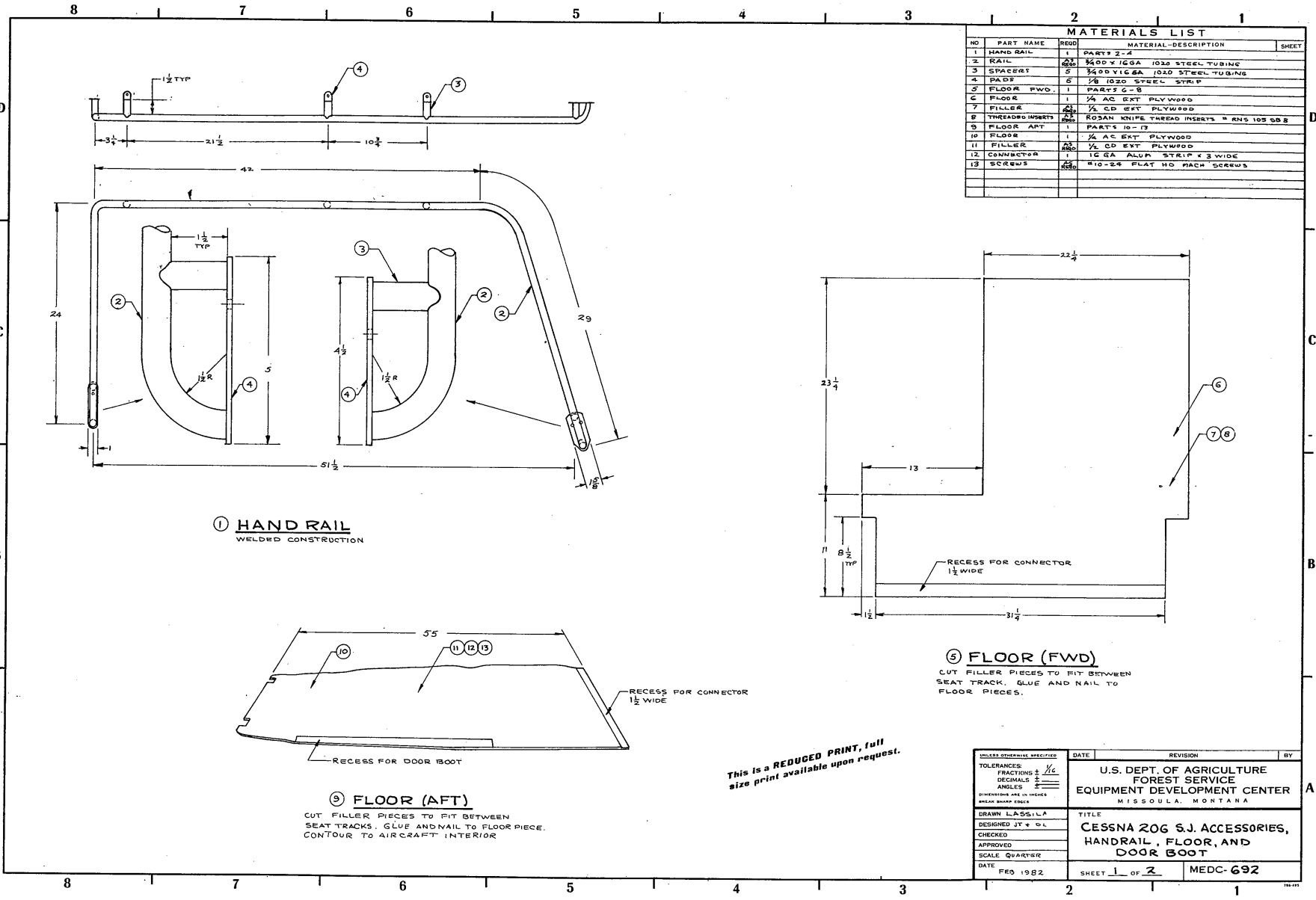
29 PIVOT

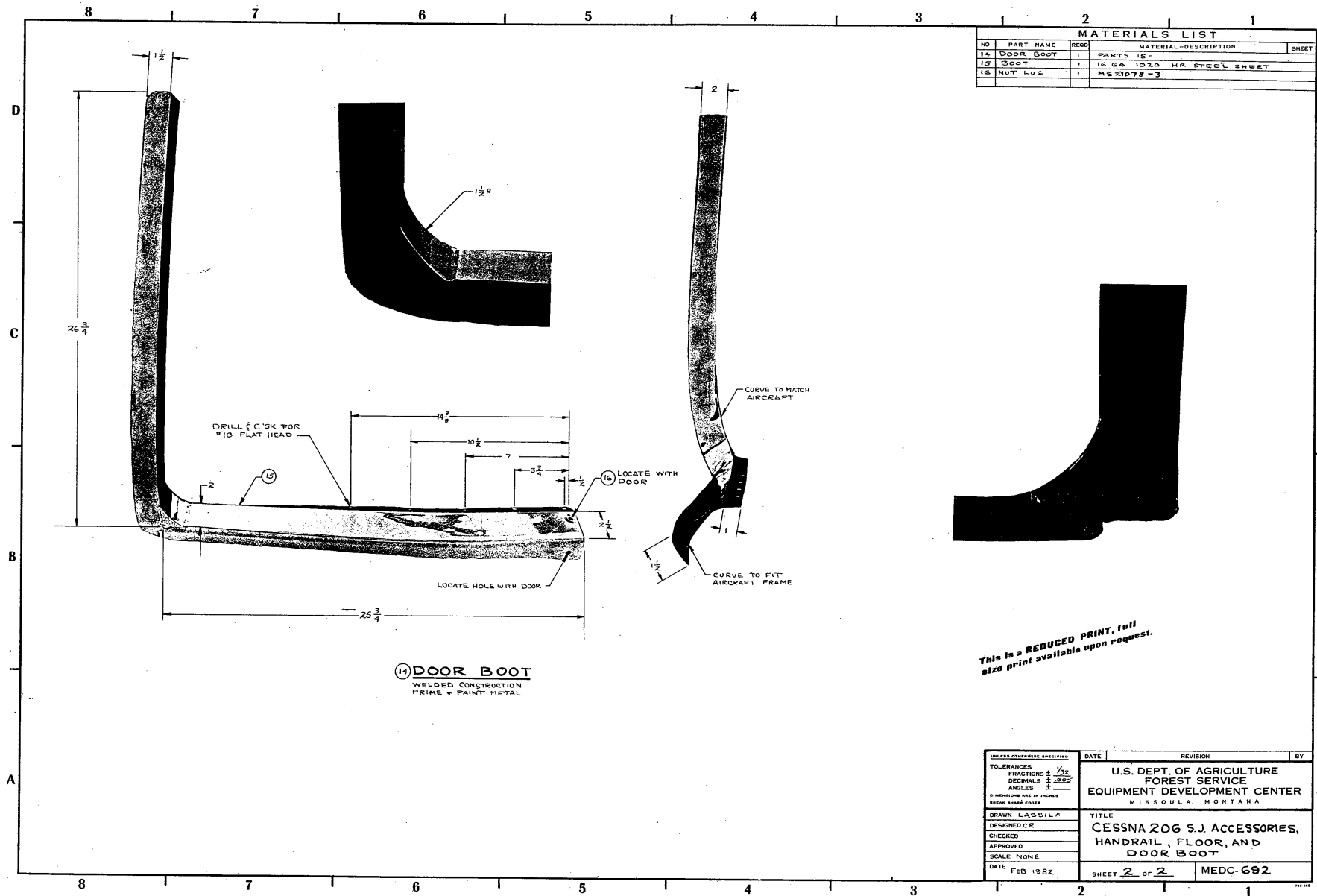
31 LATCH

35 FLANGE
 CURVE TO FIT DOOR
 WELDED CONSTRUCTION
 FULL SIZE PATTERN

This is a REDUCED PRINT, full size print available upon request.

UNLESS OTHERWISE SPECIFIED	DATE	REVISION	BY
TOLERANCES: FRACTIONS ± $\frac{.005}{32}$ DECIMALS ± $\frac{.0005}{10}$ ANGLES ± $\frac{.0005}{10}$ DIMENSIONS ARE IN INCHES UNLESS SHOWN OTHERWISE			
DRAWN LASSILA DESIGNED J.T., D.L., J.C. CHECKED APPROVED SCALE NONE & NOTED	FEB 1982	SHEET 2 OF 2	MEDC-680
U.S. DEPT. OF AGRICULTURE FOREST SERVICE EQUIPMENT DEVELOPMENT CENTER MISSOULA, MONTANA			
TITLE CESSNA 206 S.J. ANCHOR AND DOOR			





MATERIALS LIST			
NO	PART NAME	REQD	MATERIAL-DESCRIPTION
14	DOOR BOOT	1	PARTS 15
15	BOOT	1	1/2 GA 1030 HR STEEL SHEET
16	NUT LUG	1	MS1078-3

14 DOOR BOOT
WELDED CONSTRUCTION
PRIME + PAINT METAL

This is a REDUCED PRINT, full size print available upon request.

PLEASE SPECIFY SPECIFIC	DATE	REVISION	BY
TOLERANCES: FRACTIONS ± 1/32 DECIMALS ± .0005 ANGLES ± 1'			
DIRECTIONS ARE IN INCHES UNLESS SHOWN OTHERWISE			
DRAWN LASSILA			
DESIGNED CR			
CHECKED			
APPROVED			
SCALE NONE			
DATE FEB 1982	SHEET 2 OF 2	MEDC-692	

U.S. DEPT. OF AGRICULTURE
FOREST SERVICE
EQUIPMENT DEVELOPMENT CENTER
MISSOULA, MONTANA

TITLE
CESSNA 206 S.J. ACCESSORIES,
HANDRAIL, FLOOR, AND
DOOR BOOT