

CASA

212

CASA 212

Accessories Required For Smokejumping:

Primary Vertical Anchor: MEDC-760- Vertical Anchor Cable Casa 212
Aircraft
STC Strength: 2,000 pounds
STC #: SA3888NM

MTDC-836- Secondary Support Strut for Casa
212 Vertical Anchor Cable

Secondary Horizontal Anchor: Casa Factory Design

United States of America
Department of Transportation — Federal Aviation Administration
Supplemental Type Certificate

Number SA3888NM

This certificate, issued to U.S. Forest Service, MEDC
Bldg. #1, Fort Missoula
Missoula, Montana 59801

*certifies that the change in the type design for the following product with the limitations and conditions
therefor as specified hereon meets the airworthiness requirements of Part 25 of the Federal Air
Regulations.*

Original Product — Type Certificate Number: A43EU
Make: Construcciones Aeronauticas, S.A. (CASA)
Model: C-212-CC

Description of Type Design Change:

Installation of static-line anchor system for smoke-jumper operations in accordance with FAA sealed drawing number MEDC-760B, dated 10-14-87, or later approved revisions.

Limitations and Conditions:

This approval should not be extended to other aircraft of this model on which other previously approved modifications are incorporated unless it is determined that the interrelationship between this change and any other previously approved modification will introduce no adverse effect upon the airworthiness of the aircraft.

This certificate and the supporting data which is the basis for approval shall remain in effect until surrendered, suspended, revoked, or a termination date is otherwise established by the Administrator of the Federal Aviation Administration.

Date of application: February 11, 1986

Date received:

Date of issuance: January 25, 1988

Date amended:



By direction of the Administrator

David T. Grossman

David T. Grossman (Signature) Supervisor
Denver Aircraft Certification Field Office
Northwest Mountain Region, Aurora, Colorado

(Title)

Any alteration of this certificate is punishable by a fine of not exceeding \$1,000, or imprisonment not exceeding 3 years, or both.

This certificate may be transferred in accordance with FAR 21.47.



U.S. Department
of Transportation
Federal Aviation
Administration

NORTHWEST MOUNTAIN REGION
Denver Aircraft Certification Field Office
10455 East 25th Avenue-Suite 307
Aurora, Colorado 80010
(303) 340-5575 or 5578

FEB 1 1986

U.S. Forest Service, MEDC
Bldg. #1, Fort Missoula
Missoula, MT 59801

Gentlemen:

Project No. ANM-100D-0015

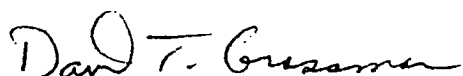
We find that you have satisfactorily demonstrated compliance with the applicable certification regulations as evidenced by the enclosed Supplemental Type Certificate (STC) SA3888NM for installation of static-line anchor system in CASA C-212-CC aircraft.

This STC is official FAA approval of your installation and may be used to authorize identical installations on other aircraft of the same model, subject to the limitations noted on the certificate. It may be transferred or otherwise made available to another party by means of a licensee arrangement in accordance with Federal Aviation Regulations (FAR) 21.47. You are requested to advise your local office within 30 days after the transfer when you transfer or grant licensee rights to the STC in order that we may take the necessary recording or reissuance action.

As recipient of this approval, except as provided in FAR 21.3(d), you are required to report any failure, malfunction, or defect in any product or part manufactured by you that you have determined has resulted or could result in any of the occurrences listed in FAR Part 21.3(c). The report should be communicated initially by telephone to the Supervisor, Denver Aircraft Certification Field Office, telephone number (303) 340-5575, within 24 hours after it has been determined that the failure has occurred. In addition, written notification to the Supervisor, ANM-191D, at the above address is required. FAA Form 8330-2 (Malfunction or Defect Report) or any other appropriate format is acceptable in transmitting the required details.

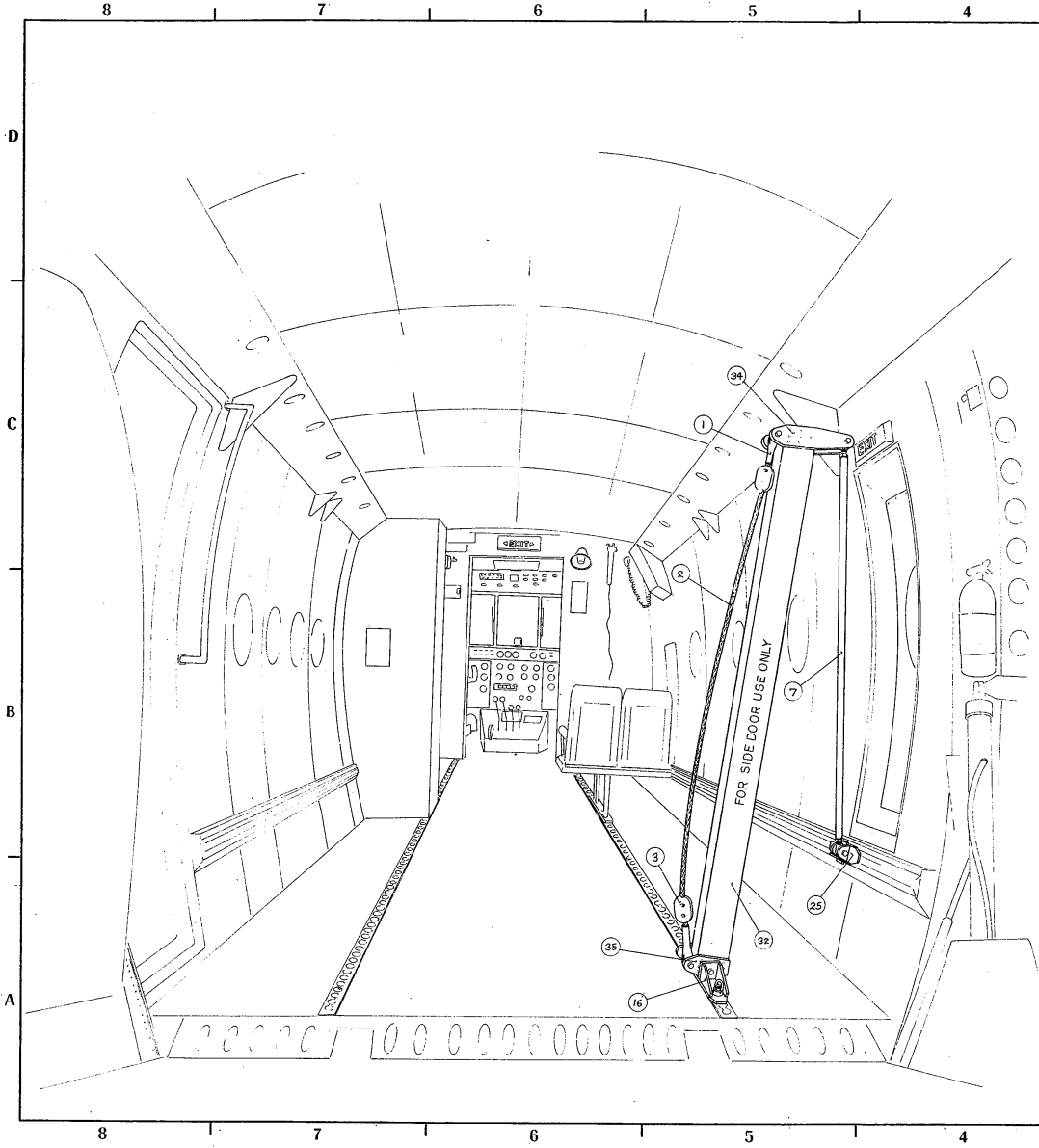
If you plan to manufacture replacement or modification parts for sale in conformance with approved data listed on the Certificate, you are required to comply with FAR Part 21.303. A Parts Manufacturer Approval (PMA) may be issued under the provisions of FAR 21.303(d) when you submit a statement certifying that you have established a fabrication inspection system as required by FAR 21.303(h). The identification requirements for parts produced under a PMA are in FAR 45.15. Your statement may be in letter form, with a reference to the STC number, and should be mailed to the address indicated above.

Sincerely,



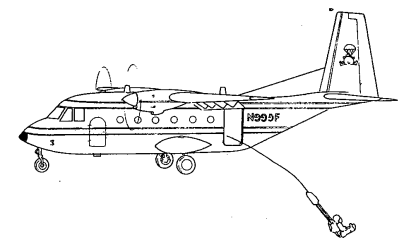
David T. Grossman
Supervisor, Denver Aircraft
Certification Field Office

Enclosure



MATERIALS LIST				
NO	PART NAME	REQD	MATERIAL DESCRIPTION	SHEET
1	FORK	2	PART 1	2
2	CABLE	1	PART 2	2
3	STOP ASSEMBLY	2	PARTS 4 & 6	2
7	ROD	1	PART 7	2
16	BASE ASSEMBLY	1	PARTS 17 & 24	3
28	SIDE ANCHOR BASE ASSEMBLY	1	PARTS 26 & 28	3
32	UPRIGHTS	1	PART 32	4
34	TOP ARM	2	PART 34	4
35	BOTTOM PLATE	2	PART 35	4

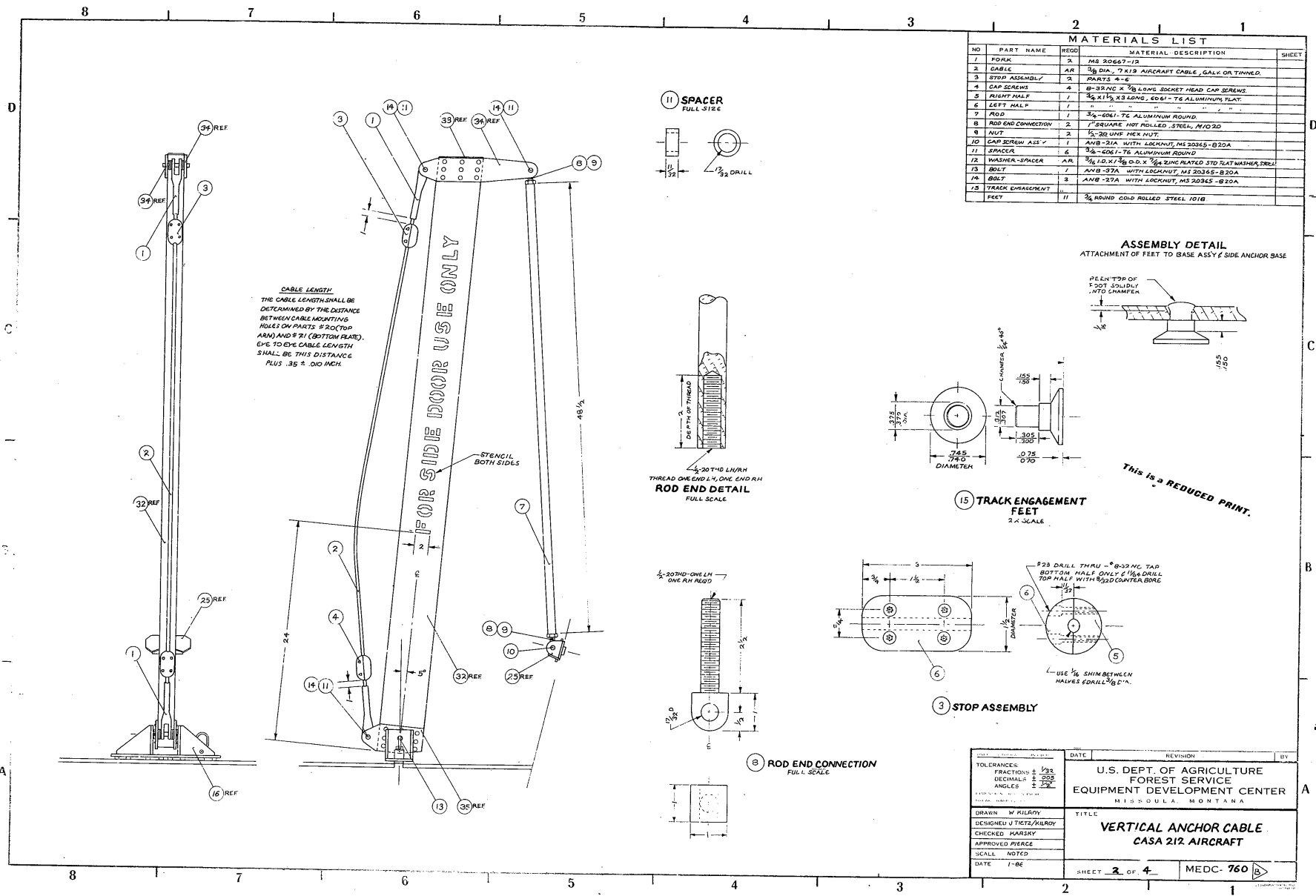
- NOTES:
- ALL WELDS SHALL COMPLY WITH FAA PUBLICATION EA-AC 43.13-1A AND 2A, LATEST REVISION CHAPTER 2, SECTION 2. WELD SYMBOLS ARE ACCORDING TO AMERICAN STANDARD WELDING GRAPHICS.
 - THE CABLE ENDS ARE TO BE SWAGED IN ACCORDANCE WITH FAA PUBLICATION EA-AC 43.13-1A AND 2A, LATEST REVISION CHAPTER 4, SECTION 1.
 - BASE, TOP AND VERTICAL ASSEMBLIES SHALL BE PRIMED AND PAINTED.
 - STENCIL ("FOR SIDE DOOR USE ONLY") SHALL BE OF AT LEAST 2" LETTERS, AND APPEAR ON BOTH SIDES OF UPRIGHT.
 - ALL WORK ON ANCHOR AND CABLE SHALL BE DONE BY, OR UNDER THE SUPERVISION OF, A FAA CERTIFIED AIRCRAFT MECHANIC.
 - RIVET INSTALLATION AND PLACEMENT SHALL BE IN ACCORDANCE WITH AIR FRAME & POWERPLANT MECHANICS HANDBOOK, 2 EA-AC 43.13-1A SECTION 3.



CASA 212 AIRCRAFT SIDE DOOR EXIT

This is a REDUCED PRINT.

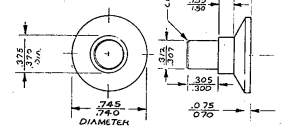
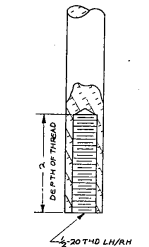
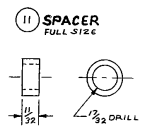
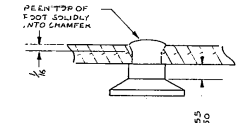
11-1988	PART 32 WAS MISLEADING	WAK
03-1987	MATL. CHANGE & RIVET REV	WAK
DATE	REVISION	BY
TOLERANCES: FRACTIONS ± 1/32 DECIMALS ± .005 ANGLES ± 1/2° UNLESS OTHERWISE SPECIFIED		U.S. DEPT. OF AGRICULTURE FOREST SERVICE EQUIPMENT DEVELOPMENT CENTER MISSOULA, MONTANA
DRAWN W. KILROY DESIGNED L. TITZ / W. KILROY CHECKED K. KAPSKY APPROVED PIERCE SCALE NONE DATE 1-86	TITLE VERTICAL ANCHOR CABLE CASA 212 AIRCRAFT	
SHEET 1 of 4		MEDC-760



CABLE LENGTH
 THE CABLE LENGTH SHALL BE DETERMINED BY THE DISTANCE BETWEEN CABLE MOUNTING HOLES ON PARTS #20 (TOP ARM) AND #21 (BOTTOM PLATE). EYE TO EYE CABLE LENGTH SHALL BE THIS DISTANCE PLUS .35 ± .010 INCH.

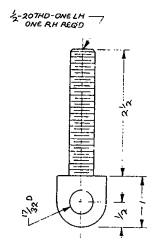
MATERIALS LIST				SHEET
NO	PART NAME	REQD	MATERIAL DESCRIPTION	
1	FORK	2	MS 20267-12	
2	CABLE	AR	3/8 DIA. 7 K19 AIRCRAFT CABLE, GALV OR TINNED	
3	STOP ASSEMBLY	2	PARTS 4-6	
4	CAP SCREWS	4	8-32UNC X 3/8 LONG SOCKET HEAD CAP SCREWS	
5	RIGHT HALF	1	3/8 X 1 1/2 X 3 LEND. EDGE-TYPE ALUMINUM PLATE	
6	LEFT HALF	1	" " " " " " " "	
7	ROD	1	3/4-6061-T6 ALUMINUM ROUND	
8	ROD END CONNECTION	2	1 SQUARE HOT ROLLED STEEL, M1020	
9	NUT	2	5/16-20 UNF HEX NUT	
10	CAP SCREW ASSY	1	ANB-21A WITH LOCKWASH, MS 20365-B20A	
11	SPACER	6	3/8-6061-T6 ALUMINUM ROUND	
12	WASHER-SPACER	AR	1/8 I.D. X 7/8 O.D. X 1/4 ZINC PLATED STD PLAT WASHER, SREI	
13	BOLT	1	ANB-27A WITH LOCKWASH, MS 20365-B20A	
14	BOLT	3	ANB-27A WITH LOCKWASH, MS 20365-B20A	
15	TRACK ENGAGEMENT FEET	11	3/8 ROUND GOLD ROLLED STEEL 1018	
FEET				

ASSEMBLY DETAIL
 ATTACHMENT OF FEET TO BASE ASSY SIDE ANCHOR BASE

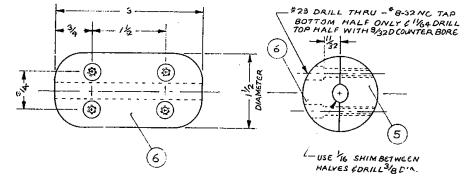


ROD END DETAIL
 FULL SCALE

TRACK ENGAGEMENT FEET
 2X SCALE



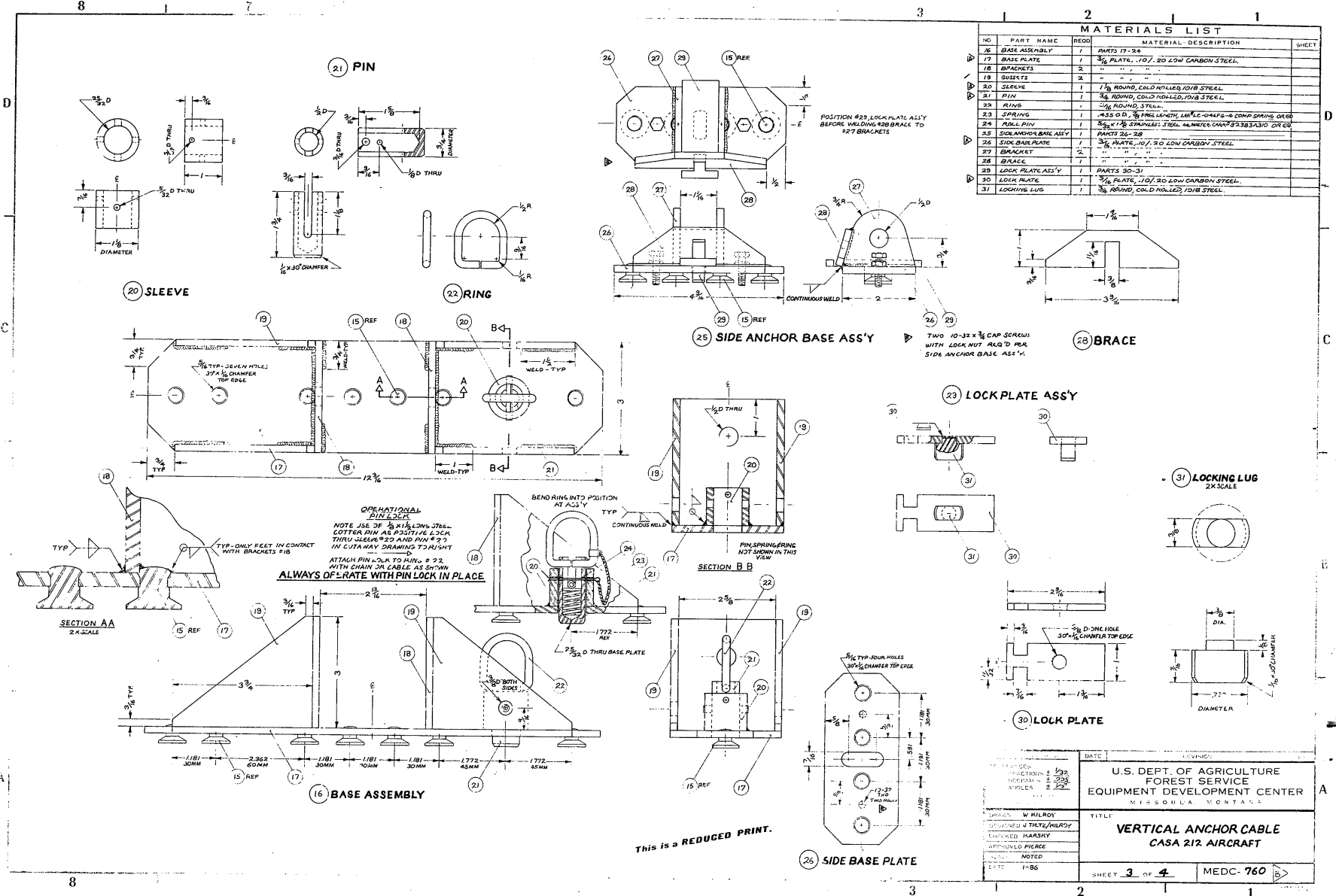
ROD END CONNECTION
 FULL SCALE



STOP ASSEMBLY

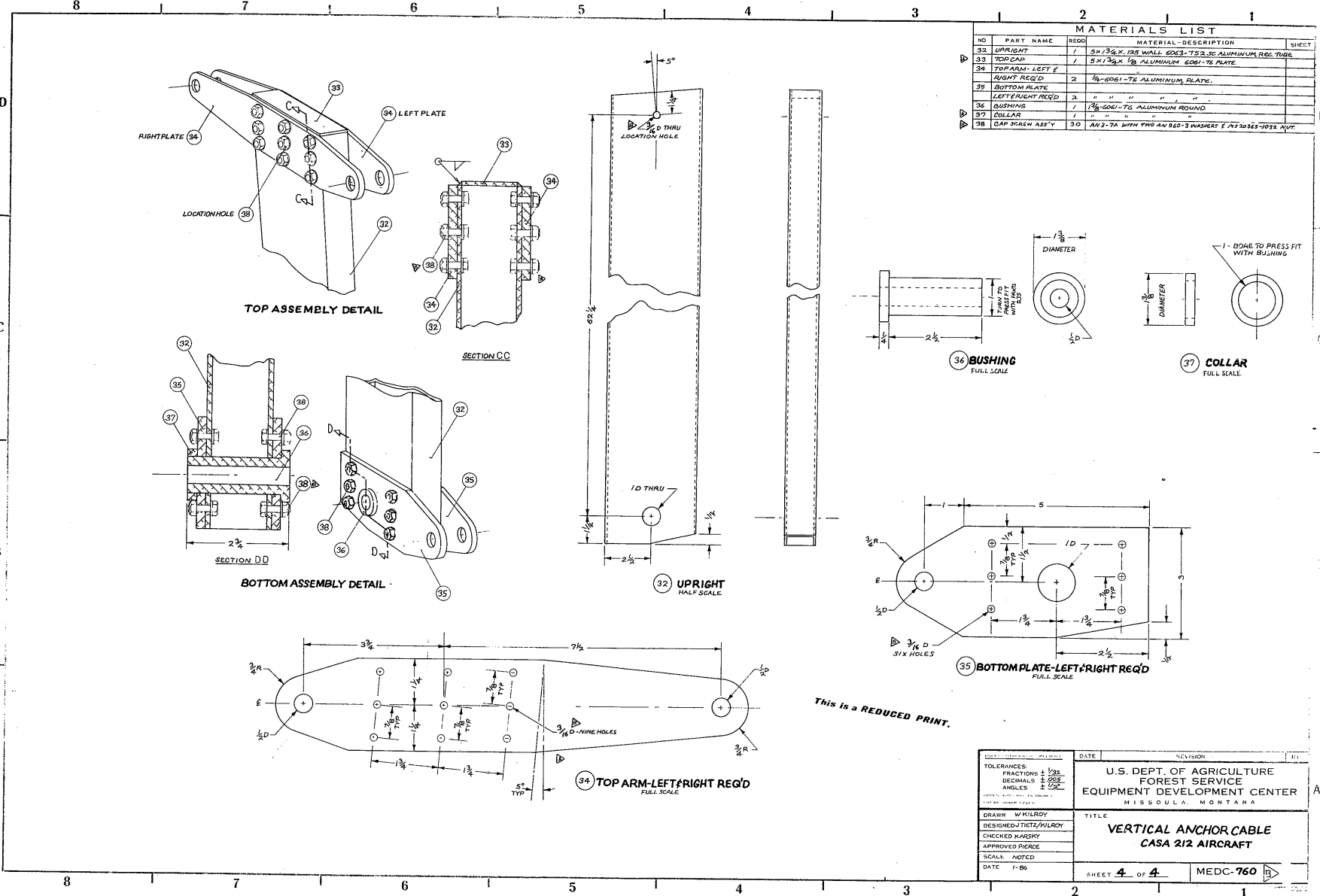
DATE	REVISION	BY
TOLERANCES: FRACTIONS ± 1/32 DECIMALS ± .005 ANGLES ± 1/2°		
U.S. DEPT. OF AGRICULTURE FOREST SERVICE EQUIPMENT DEVELOPMENT CENTER MISSOULA, MONTANA		
DRAWN W KILROY DESIGNED U TEST ZILROY CHECKED HARRY APPROVED WERC SCALE NOTED DATE 1-26		
TITLE VERTICAL ANCHOR CABLE CASA 212 AIRCRAFT		
SHEET 2 OF 4		MEDC-760

This is a REDUCED PRINT.



MATERIALS LIST			
NO	PART NAME	REQD	MATERIAL DESCRIPTION
16	BASE ASSEMBLY	1	PARTS 17-24
17	BASE PLATE	1	3/16" PLATE, 10/20 LOW CARBON STEEL
18	BRACKETS	2	" " " "
19	QUERYS	2	" " " "
20	SLEEVE	1	1 1/2" ROUND, COLD ROLLED, 1018 STEEL
21	PIN	1	3/16" ROUND, COLD ROLLED, 1018 STEEL
22	RING	1	3/16" ROUND, STEEL
23	SPRING	1	MSS O.D. 1/8" FREE LENGTH, 1/16" O.D. 1/8" COMPRESSING O.R.D.
24	LOCK PIN	1	3/16" X 1 1/2" STAINLESS STEEL, NUMBER 304, 3040 O.R.C.
25	SIDE ANCHOR BASE ASS'Y	1	PARTS 25-28
26	SIDE BASE PLATE	1	3/16" PLATE, 10/20 LOW CARBON STEEL
27	BRACKET	2	" " " "
28	BRACE	1	" " " "
29	LOCK PLATE ASS'Y	1	PARTS 29-31
30	LOCK PLATE	1	3/16" PLATE, 10/20 LOW CARBON STEEL
31	LOCKING LUG	1	3/16" ROUND, COLD ROLLED, 1018 STEEL

DATE		REVISION	
DESIGNED BY	1/29	U.S. DEPT. OF AGRICULTURE	
DRAWN BY	2/25	FOREST SERVICE	
CHECKED BY	2/25	EQUIPMENT DEVELOPMENT CENTER	
APPROVED BY		MISSOULA, MONTANA	
NOTED			
DATE	1-86		
SHEET 3 OF 4		MEDC-760	



MATERIALS LIST			
NO	PART NAME	REQD	MATERIAL-DESCRIPTION
32	UPRIGHT	1	5X1 3/4 X 1/8 WALL 6063-T52 ALUMINUM REG TUBE
33	TOP CAP	1	5X1 3/4 X 1/8 ALUMINUM 6061-T6 PLATE
34	TOP ARM-LEFT & RIGHT REQ'D	2	1/8-6061-T6 ALUMINUM PLATE
35	BOTTOM PLATE	2	1/8-6061-T6 ALUMINUM ROUND
36	BUSHING	1	1 3/8-6061-T6 ALUMINUM ROUND
37	COLLAR	1	1 3/8-6061-T6 ALUMINUM ROUND
38	CAP SCREW ASS'Y	30	AV3-7A WITH TWO AN 960-3 WASHER & AT30365-1052 NUT

36 BUSHING FULL SCALE

37 COLLAR FULL SCALE

35 BOTTOM PLATE-LEFT & RIGHT REQ'D FULL SCALE

32 UPRIGHT HALF SCALE

34 TOP ARM-LEFT & RIGHT REQ'D FULL SCALE

This is a REDUCED PRINT.

TOLERANCES: FRACTIONS: ± 1/32 DECIMALS: ± 0.002 ANGLES: ± 5'		U.S. DEPT. OF AGRICULTURE FOREST SERVICE EQUIPMENT DEVELOPMENT CENTER MISSOULA, MONTANA
DRAWN: W. KILROY DESIGNED: J. TIETZ / W. KILROY CHECKED: K. AVERY APPROVED: [Signature] SCALE: NOTED DATE: 7-66	TITLE: VERTICAL ANCHOR CABLE CASA 212 AIRCRAFT	
SHEET 4 of 4		MEDC-760

