

E-23

C-23

Accessories Required For Smokejumping:

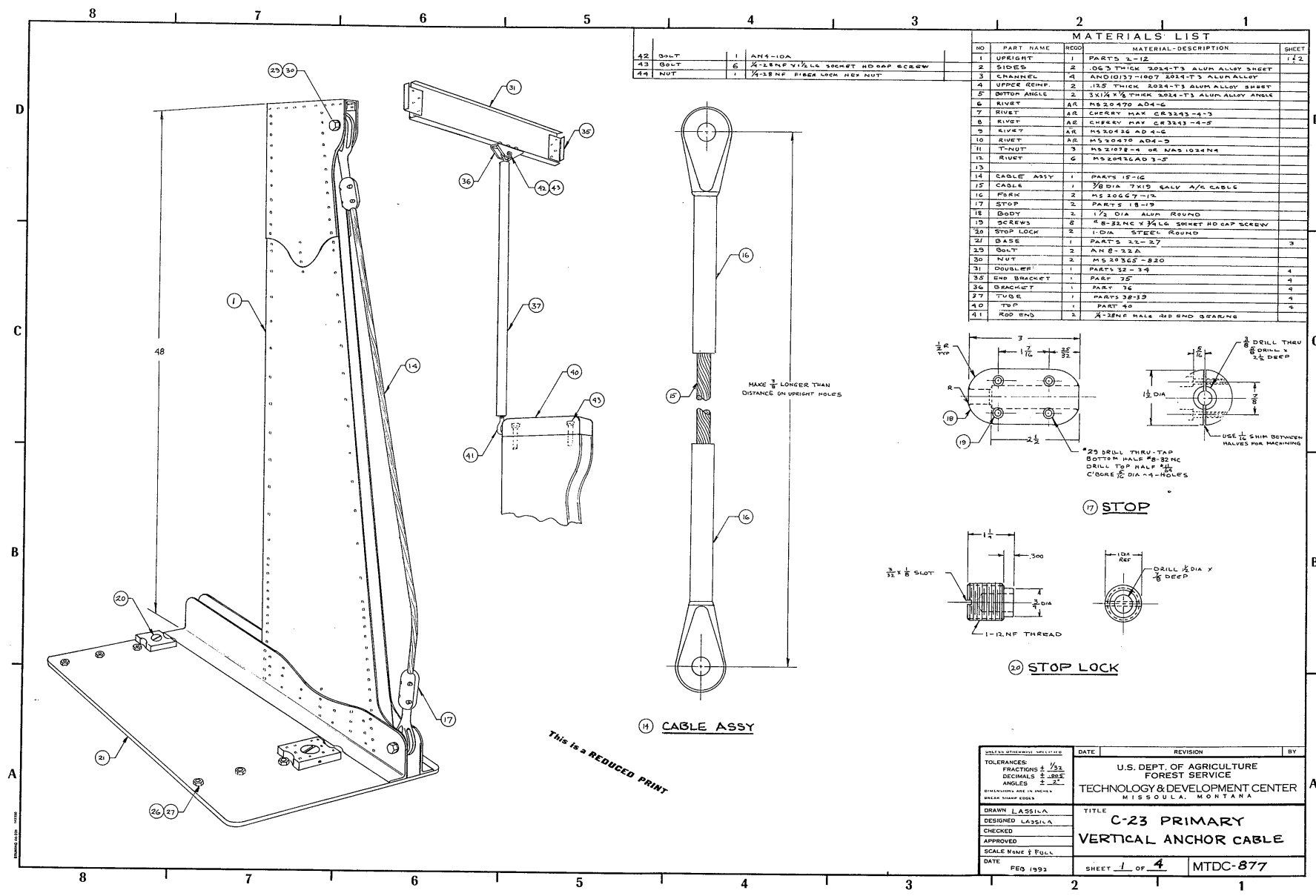
Primary Vertical Anchor: MTDC-877 - Vertical Anchor for C-23  
Strength: 2,000 pounds  
STC#: N.A. (C-23 is not a certified A/C)

Secondary Horizontal Anchor: MTDC-896 - C-23 Horizontal Anchor  
Strength: 750 pounds  
STC#: N.A. (C-23 is not a certified A/C)

Handrails: MTDC-868 - C-23 Handrails

Tailgate Gear Box: MTDC-881 - C-23 Cargo Bin

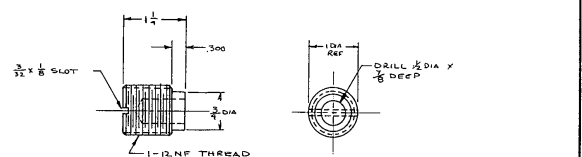
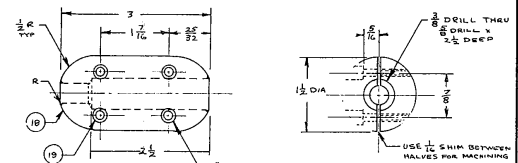
Revised February 1999



42	BOLT	1	AH 8-10A
43	BOLT	6	1/4-28NF 1/2" LLS SHEET HD CAP SCREW
44	NUT	1	1/4-28NF FIBER LOCK HEX NUT

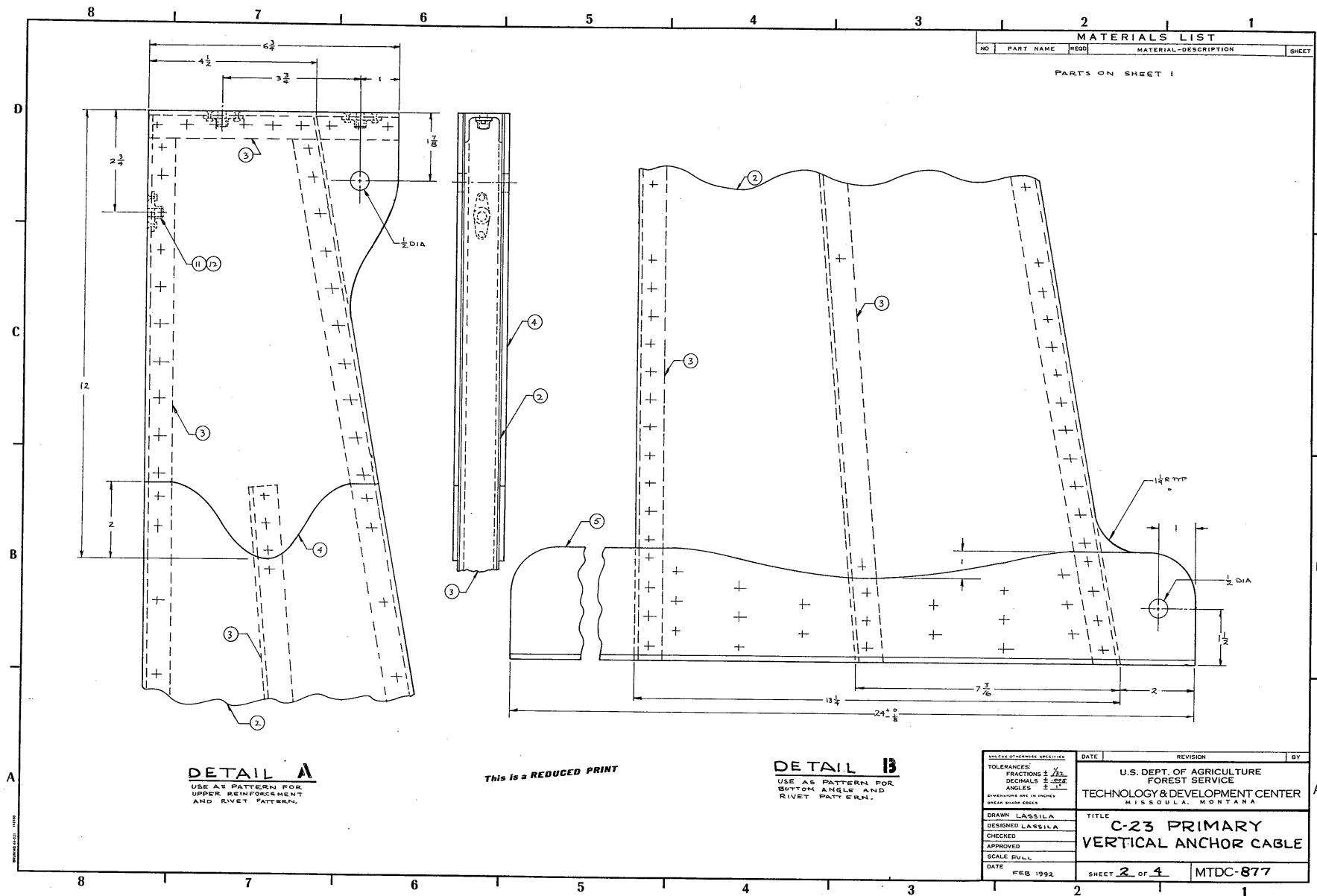
MATERIALS LIST				
NO	PART NAME	REQD	MATERIAL-DESCRIPTION	SHEET
1	UPRIGHT	1	PARTS 1-12	1/2
2	SIDES	2	063 THICK 2024-T3 ALUM ALLOY SHEET	
3	CHANNEL	4	AN61037-1907 2024-T3 ALUM ALLOY	
4	UPPER REINF.	2	1/25 THICK 2024-T3 ALUM ALLOY SHEET	
5	OUTER ANGLE	2	3X1/2 X 1/2 THICK 2024-T3 ALUM ALLOY ANGLE	
6	RIVET	AR	MS 20470 AD-6	
7	RIVET	AR	CHEERY MAX CR3343-4-3	
8	RIVET	AR	CHEERY MAX CR3343-4-5	
9	RIVET	AR	MS 20436 AD-4-6	
10	RIVET	AR	MS 20430 AD-4-5	
11	T-NUT	3	MS 21072-4 OR WAS 1024N4	
12	RIVET	6	MS 20436 AD-3-5	
13				
14	CABLE ASSY	1	PARTS 15-16	
15	CABLE	1	3/8 DIA 7X12 GALV A/C CABLE	
16	FORM	2	MS 20627-12	
17	STOP	2	PARTS 18-19	
18	BODY	2	1 1/2 DIA ALUM ROUND	
19	SCREWS	8	4-8-32 NC X 3/16 L SHEET HD CAP SCREW	
20	STOP LOCK	2	1-DIA STEEL ROUND	
21	BASE	1	PARTS 22-27	3
22	BOLT	2	AH 8-32A	
23	NUT	2	MS 30455-B20	
24	DOUBLER	1	PARTS 28-29	4
25	END BRACKET	1	PART 25	4
26	BRACKET	1	PART 26	4
27	TUB	1	PARTS 30-33	4
40	TOP	1	PART 40	
41	ROD END	2	1/4-28NF HALF RD END BEARING	2

MAKE 1/8" LONGER THAN DISTANCE ON UPRIGHT HOLES



This is a REDUCED PRINT

UNLESS OTHERWISE SPECIFIED	DATE	REVISION	BY
TOLERANCES: FRACTIONS 1/32 DECIMALS 0.005 ANGLES 0.02			
STRAIGHTEN AND FINISH BREAK SHARP EDGES			
DRAWN LASSILA	TITLE		
DESIGNED LASSILA	C-23 PRIMARY		
CHECKED	VERTICAL ANCHOR CABLE		
APPROVED			
SCALE NAME FULL			
DATE FEB 1993	SHEET 1 OF 4	MTDC-877	



MATERIALS LIST			
NO	PART NAME	REQD	MATERIAL-DESCRIPTION

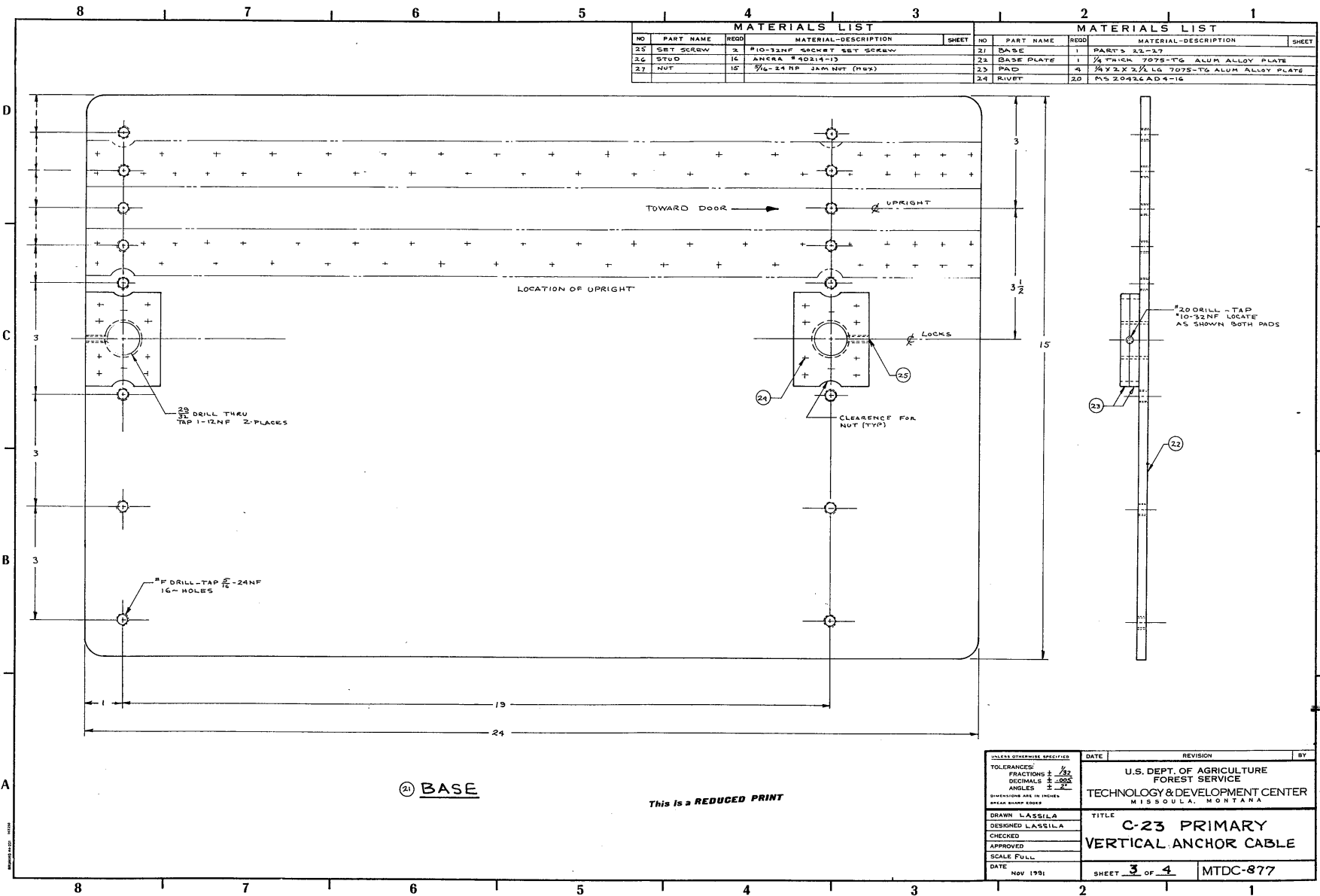
PARTS ON SHEET 1

**DETAIL A**  
USE AS PATTERN FOR  
UPPER REINFORCEMENT  
AND RIVET PATTERN.

This is a REDUCED PRINT

**DETAIL B**  
USE AS PATTERN FOR  
BOTTOM ANGLE AND  
RIVET PATTERN.

TOLERANCES: FRACTIONS $\frac{1}{32}$ DECIMALS $\pm .005$ ANGLES $\pm 1'$ DIMENSIONS ARE IN INCHES UNLESS SHOWN OTHERWISE	DATE FEB 1992	REVISION	BY
U.S. DEPT. OF AGRICULTURE FOREST SERVICE TECHNOLOGY & DEVELOPMENT CENTER M I S S O U L A , M O N T A N A		TITLE <b>C-23 PRIMARY VERTICAL ANCHOR CABLE</b>	
DRAWN LASSILA DESIGNED LASSILA CHECKED APPROVED SCALE FULL		SHEET <b>2</b> OF <b>4</b> MTDC-877	



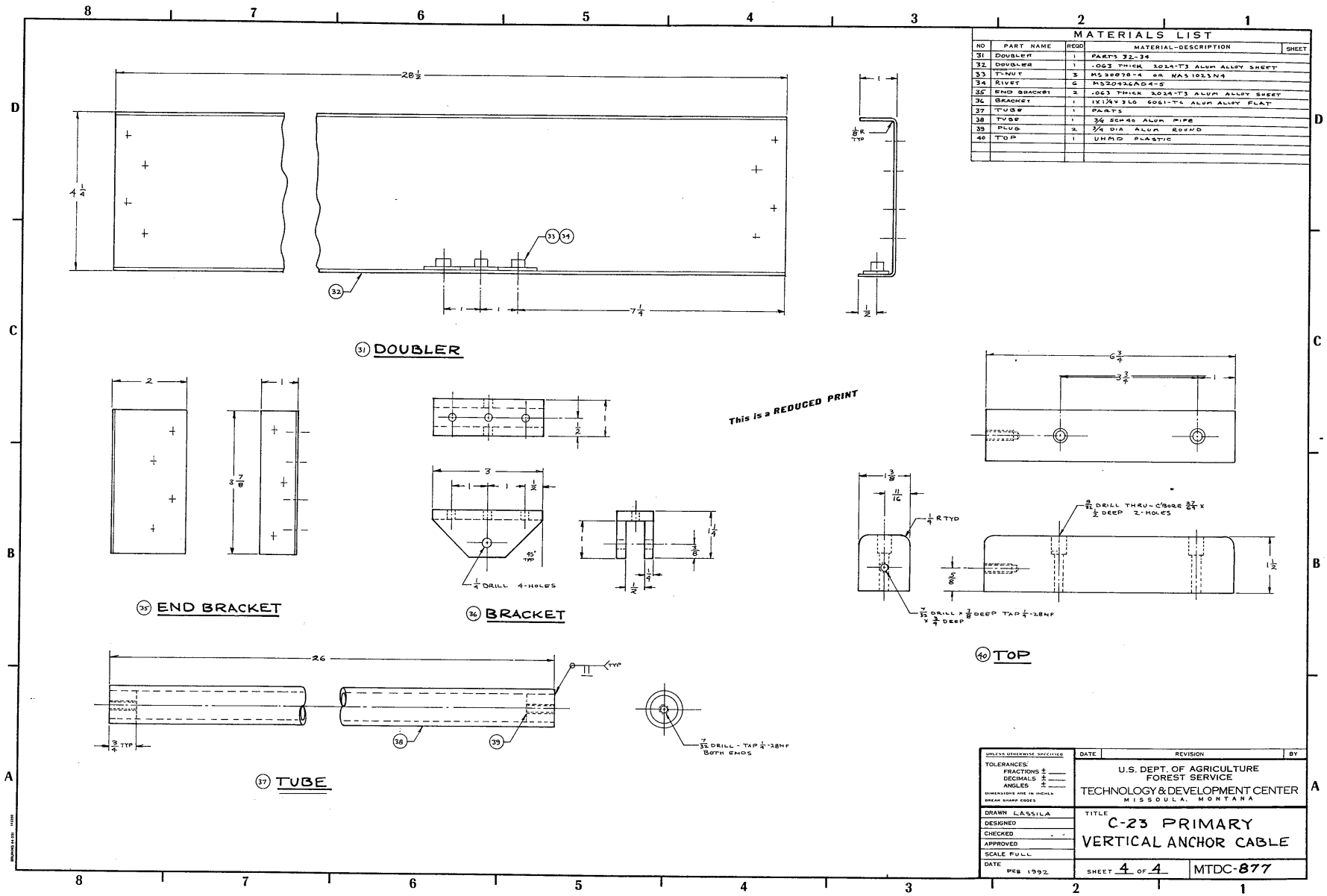
MATERIALS LIST			
NO	PART NAME	QTY	MATERIAL-DESCRIPTION
25	SET SCREW	2	#10-32NF SOCKET SET SCREW
26	STUD	16	ANKRA #2014-13
27	NUT	16	3/16-24 RP 34M NUT (H6X)

MATERIALS LIST			
NO	PART NAME	QTY	MATERIAL-DESCRIPTION
27	BASE	1	PARTS 22-27
28	BASE PLATE	1	1/4 THICK 7075-T6 ALUM ALLOY PLATE
29	PAD	4	3/4 X 3 X 3/4 LG 7075-T6 ALUM ALLOY PLATE
24	RIVET	20	M5 2.0424 AD 4-16

21 BASE

This is a REDUCED PRINT

UNLESS OTHERWISE SPECIFIED	DATE	REVISION	BY
TOLERANCES: FRACTIONS ± 1/32 DECIMALS ± .0005 ANGLES ± 2'			
U.S. DEPT. OF AGRICULTURE FOREST SERVICE			
TECHNOLOGY & DEVELOPMENT CENTER MISSOULA, MONTANA			
DRAWN LASSILA	TITLE		
DESIGNED LASSILA	C-23 PRIMARY		
CHECKED	VERTICAL ANCHOR CABLE		
APPROVED			
SCALE FULL			
DATE NOV 1991	SHEET 3 OF 4	MTDC-877	



MATERIALS LIST				
NO	PART NAME	REQD	MATERIAL-DESCRIPTION	SHEET
31	DOUBLER	1	PARTS 32-34	
32	DOUBLER	1	.063 THICK 2024-T3 ALUM ALLOY SHEET	
33	TUBE	2	M52028-2 OR M451031M3	
34	RIVET	6	M52046AD4-2	
35	END BRACKET	2	.063 THICK 2024-T3 ALUM ALLOY SHEET	
36	BRACKET	1	1X12X 1/8 5061-T4 ALUM ALLOY PLAT	
37	TUBE	1	PARTS	
38	TUBE	1	3/4 SCH 40 ALUM PIPE	
39	PLUG	2	3/4 DIA ALUM ROUND	
40	TOP	1	UNMD PLASTIC	

This is a REDUCED PRINT

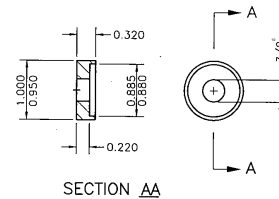
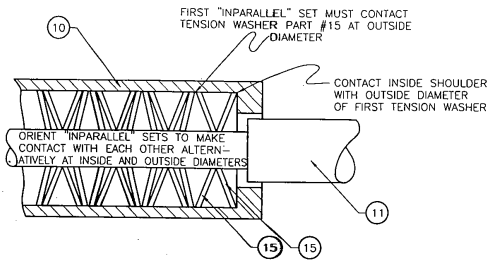
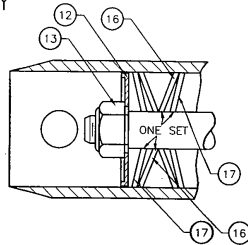
UNLESS OTHERWISE SPECIFIED	DATE	REVISION	BY
TOLERANCES: FRACTIONS 2 DECIMALS 2 ANGLES 2			
DESIGNED BY CHECKED APPROVED SCALE FULL		U.S. DEPT. OF AGRICULTURE FOREST SERVICE TECHNOLOGY & DEVELOPMENT CENTER MISSOULA, MONTANA	
DRAWN LASSILA		TITLE C-23 PRIMARY VERTICAL ANCHOR CABLE	
DATE PER 1992		SHEET 4 OF 4	MTDC-877

9 SHOCK ABSORBER ASS'Y

BELLEVILLE SPRING WASHER DETAIL  
NOTE SPRING ORIENTATION CAREFULLY

IT IS IMPORTANT TO ASSEMBLE BELLEVILLE WASHERS IN THE PROPER SEQUENCE TO ACHIEVE THE DESIRED SHOCK ABSORBING ACTION

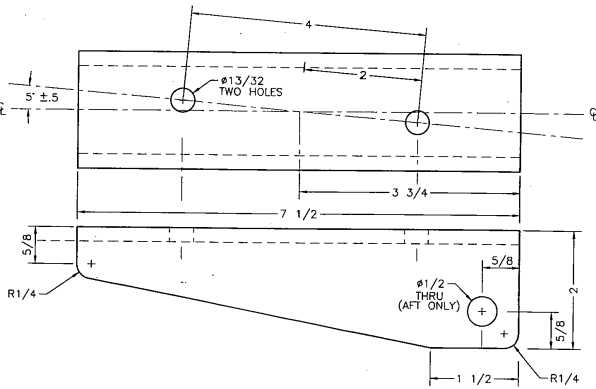
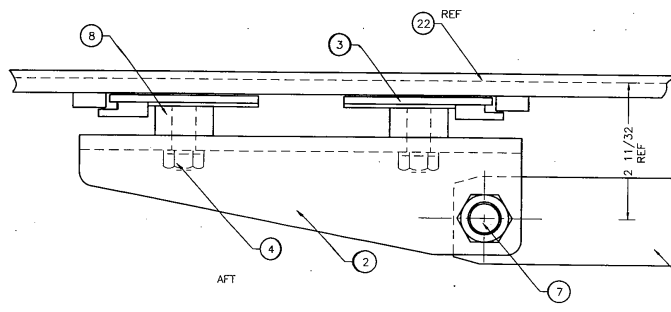
---DRAWING NOT TO SCALE---



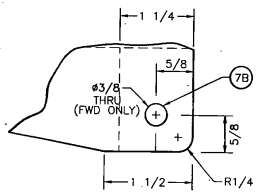
SECTION AA

12 KEEPER  
FULL SCALE

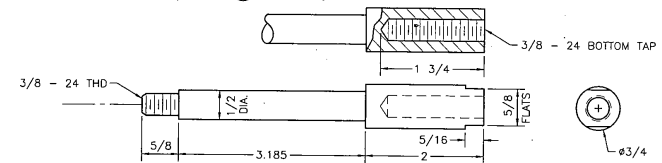
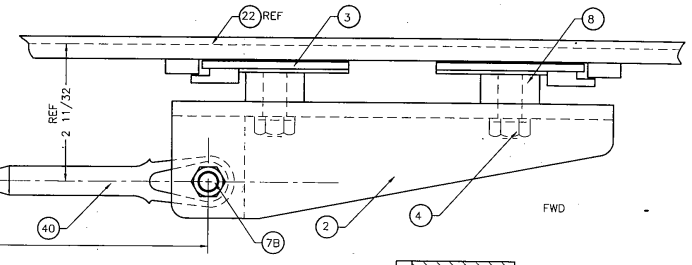
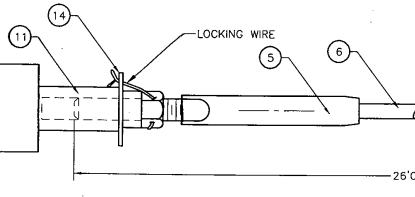
MATERIAL LIST				
NO	PART NAME	REQD	MATERIAL-DESCRIPTION	SHEET
1	ANCHOR PLATE & SHOCK AB ASSY	1	PARTS 2 THRU 17	
2	BRACKET-FWD & AFT	2	2 X 3 X 1/4 WALL RECT STEEL TUBE	
3	STANCHION	1		
FITTINGS				
4	LOCK NUT	4	3/8 - 24 FIBERLOCK HEX NUT	
5	STUD CABLE END	1	MS 21259 - 8RH W/WIRE LOCK NUT	
6	CABLE	1	1/4 DIA 7 X 19 GALVANIZED AIRCRAFT CABLE 26 FT LG	
7	CAPSCREW	1	1/2 - 13 UNC X 2 1/2 CAPSCREW GRADE 8 W/NYLOCK NUT	
7B	CAPSCREW	1	3/8 - 24 UNC X 2 1/2 CAPSCREW GRADE 8 W/NYLOCK NUT	
8	SPACER	4	1" ROUND 6061 - T6 ALUMINUM	
9	SHOCK ABSORBER ASSY	1	PARTS #10 THRU 17	
10	SA BODY	1	1 1/2 X 3/8 WALL MECH. TUBE 1020 STEEL	
11	CENTER ROD	1	1 ROUND COLD ROLLED 1117 STEEL	
12	KEEPER	1	1 ROUND COLD ROLLED 1117 STEEL	
13	NUT	1	3/8 - 24 LOCK NYLOCK HEX NUT	
14	LOCK RING	1	5/8 ID WASHER GRADE 8 STEEL WASHERS	
15	TENSION WASHER	2	BELLEVILLE, BARNES #B1000 - 0355	
16	ABSORBER WASHER	20	BELLEVILLE, BARNES #B1000 - 505	
17	ABSORBER WASHER	20	BELLEVILLE, BARNES #B1000 - 0735	
40	TERMINAL	1	MS 20667-8 WIRE ROPE FORK END	



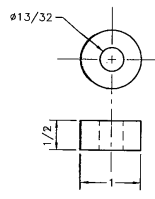
2 BRACKET-FWD & AFT  
FULL SCALE



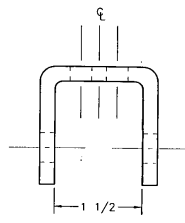
1 ANCHOR AND SHOCK ABSORBER  
FULL SCALE



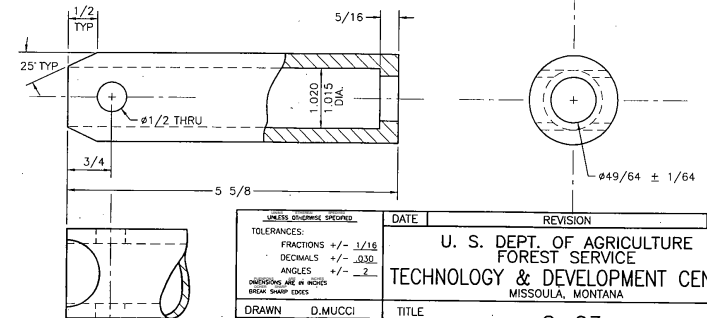
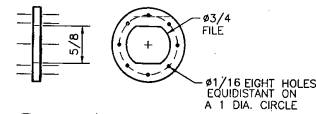
11 CENTER ROD  
FULL SCALE



8 SPACERS  
FULL SCALE



14 LOCK RING  
FULL SCALE

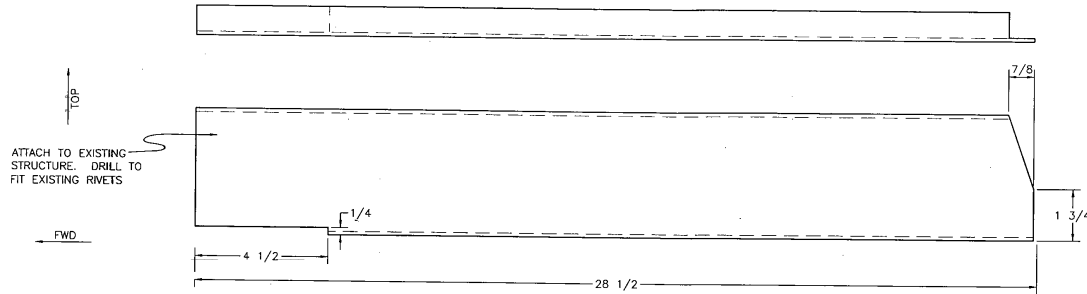


10 S.A. BODY  
FULL SCALE

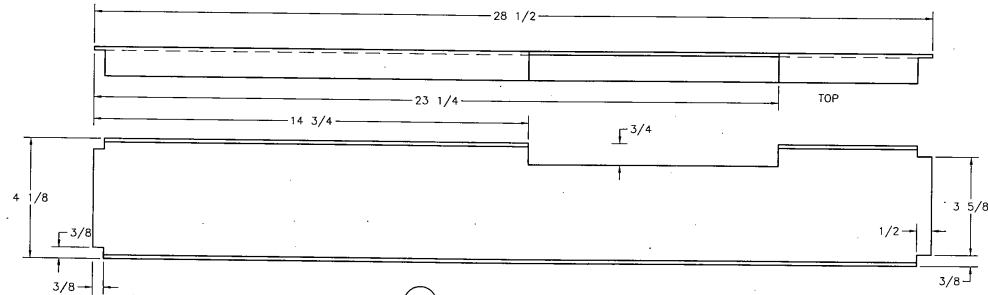
UNLESS OTHERWISE SPECIFIED		DATE	REVISION	BY
TOLERANCES:				
FRACTIONS ± 1/32				
DECIMALS ± 0.031				
ANGLES ± 1/2°				
DIMENSIONS ARE IN INCHES UNLESS SHOWN OTHERWISE				
DRAWN	D. MUCCI			
DESIGNED	R. J. K.			
CHECKED	R. J. K.			
APPROVED	R. J. K.			
SCALE	FULL			
DATE	09/20/95			
U. S. DEPT. OF AGRICULTURE FOREST SERVICE TECHNOLOGY & DEVELOPMENT CENTER MISSOULA, MONTANA		TITLE		
		C-23 HORIZONTAL ANCHOR		
SHEET 1 OF 5		MTDC-896		

### MATERIAL LIST

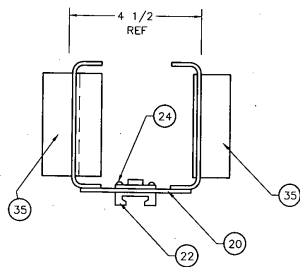
NO	PART NAME	REQD	MATERIAL-DESCRIPTION	SHEET
18	STRINGER PLATE	4	.063 ALUMINUM SHEET 2024-T3	
20	BASE PLATE	1	.090 ALUMINUM SHEET 2024-T3	
21	TEENUT	30	MS21059 - L4K	
22	SEAT TRACK	2	ANCR#40467 - MS33601 HEAVY DUTY	
23	SCREW	30	MS24694 - S107	
24	RIVET	AR	MS20426 - AD3 - 4	



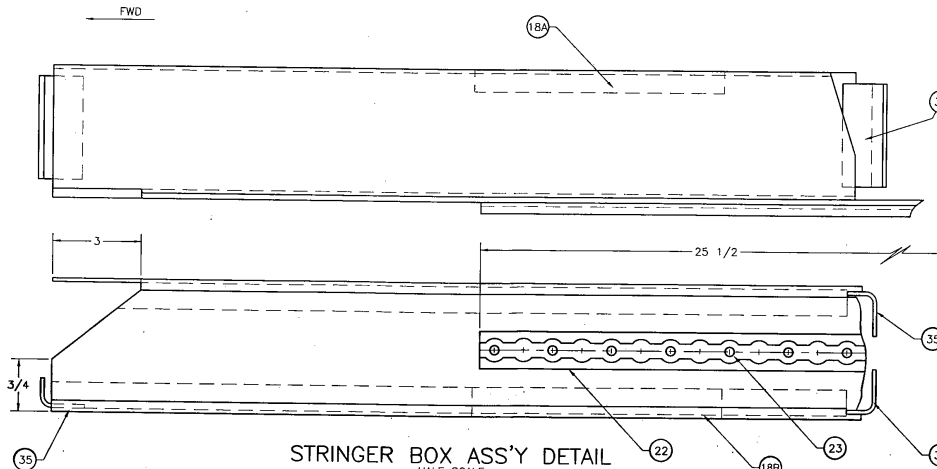
(18A) LH STRINGER PLATE  
HALF SCALE



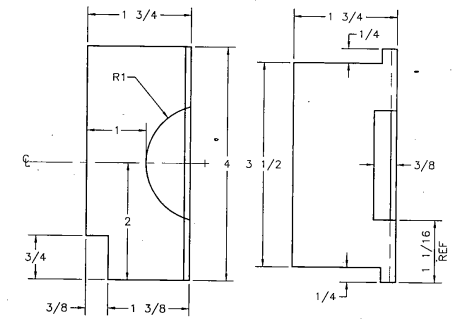
(18B) RH STRINGER PLATE  
HALF SCALE



NOTE:  
POSITION AND  
ATTACH ALL  
END PLATES  
AT ASSY IN  
AIRCRAFT



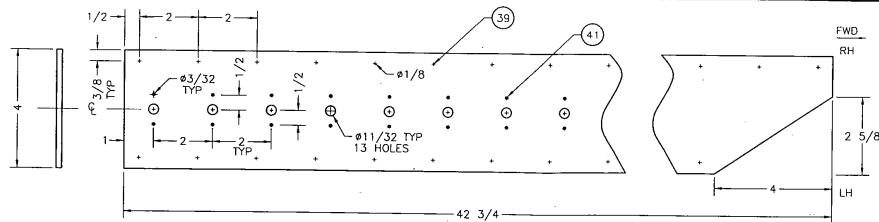
STRINGER BOX ASS'Y DETAIL  
HALF SCALE  
FROM STA. 89.0 TO STA. 117.6



(36) END PLATE-B  
FULL SCALE

UNLESS OTHERWISE SPECIFIED	DATE	REVISION	BY
TOLERANCES: FRACTIONS +/- 1/16 DECIMALS +/- .030 ANGLES +/- 2'			
DRAWN D. MUCCI			
DESIGNED RJK			
CHECKED RJK			
APPROVED RJK			
SCALE FULL			
DATE 09/20/95			
U. S. DEPT. OF AGRICULTURE FOREST SERVICE TECHNOLOGY & DEVELOPMENT CENTER MISSOULA, MONTANA			
TITLE C-23 HORIZONTAL ANCHOR			
SHEET 2 OF 5			MTDC-896



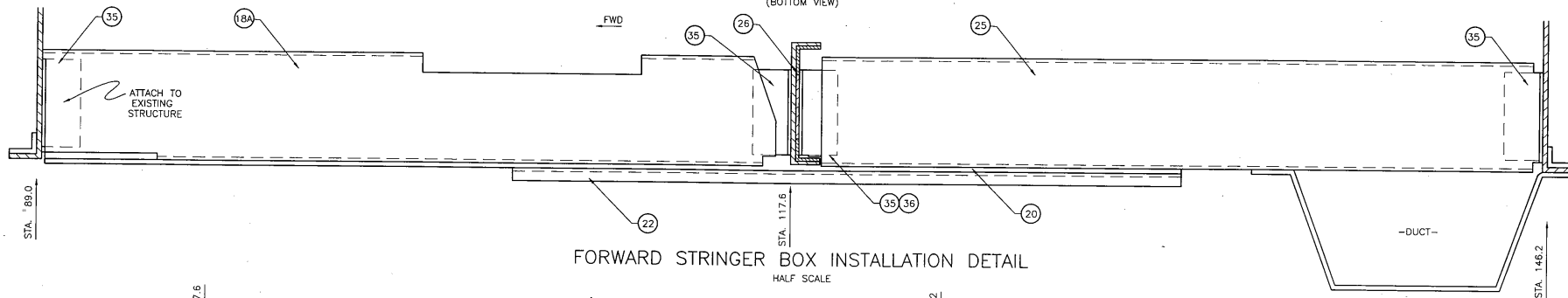


20 BASE PLATE

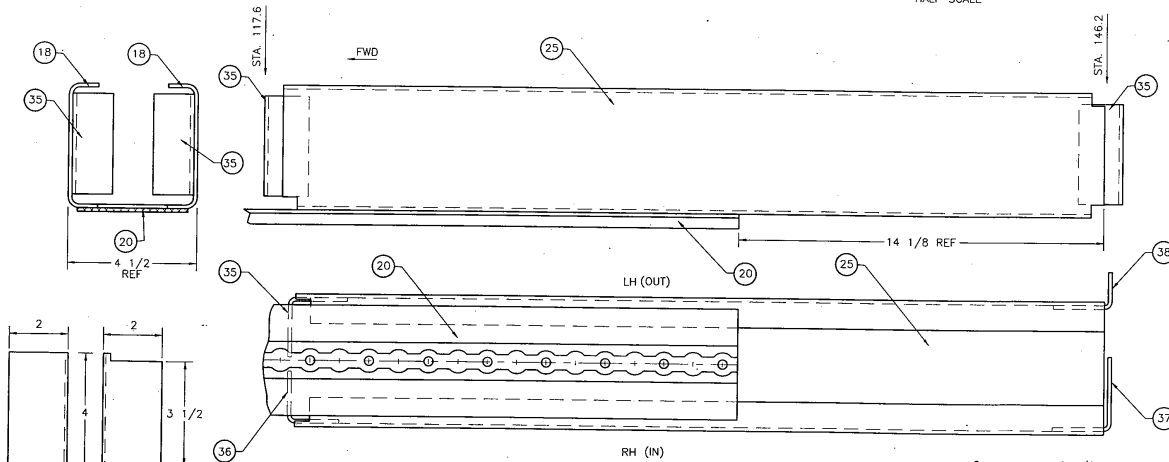
HALF SCALE  
ATTACH TO STRINGER BOX ASS'Y  
AT AIRCRAFT INSTALLATION  
(BOTTOM VIEW)

MATERIAL LIST

NO	PART NAME	REQD	MATERIAL-DESCRIPTION	SHEET
25	STRINGER PLATE	2	.090 ALUMINUM SHEET 2024-T3	
26	DOUBLER	1	.090 ALUMINUM SHEET 2024-T3	
35	END PLATE	4	.090 ALUMINUM SHEET 2024-T3	
36	END PLATE	1	.090 ALUMINUM SHEET 2024-T3	
37	END PLATE	1	.090 ALUMINUM SHEET 2024-T3	
38	END PLATE	1	.090 ALUMINUM SHEET 2024-T3	
39	RIVET	AR	MS20426 - AD4	
41	RIVET	AR	MS20426 - AD3 - 4	



FORWARD STRINGER BOX INSTALLATION DETAIL  
HALF SCALE

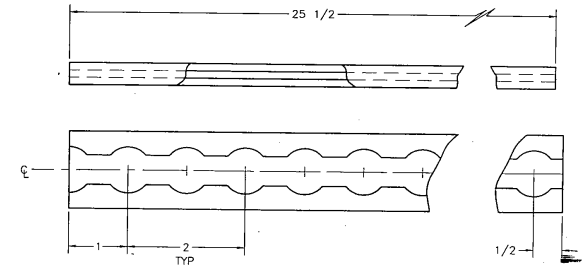


35 END PLATE A  
HALF SCALE

STRINGER BOX ASS'Y DETAIL  
HALF SCALE  
FROM STA. 117.6 TO STA. 146.2  
BOTTOM VIEW

37 END PLATE D  
HALF SCALE

38 END PLATE C  
HALF SCALE

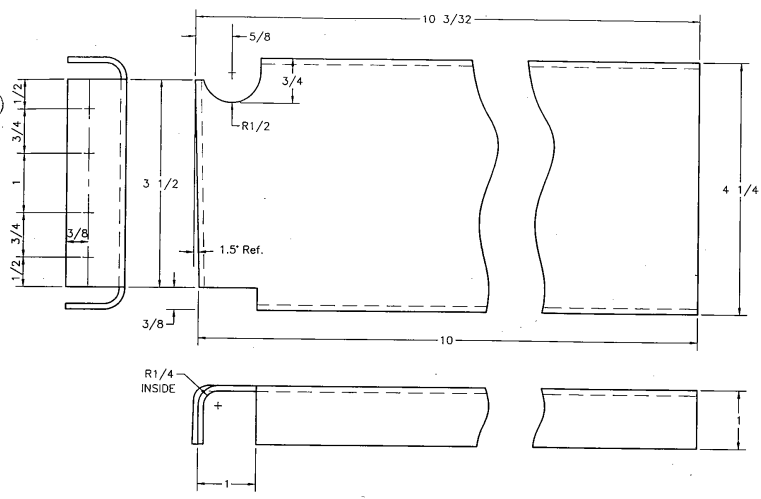


22 FWD & AFT TRACK DETAIL  
FULL SCALE

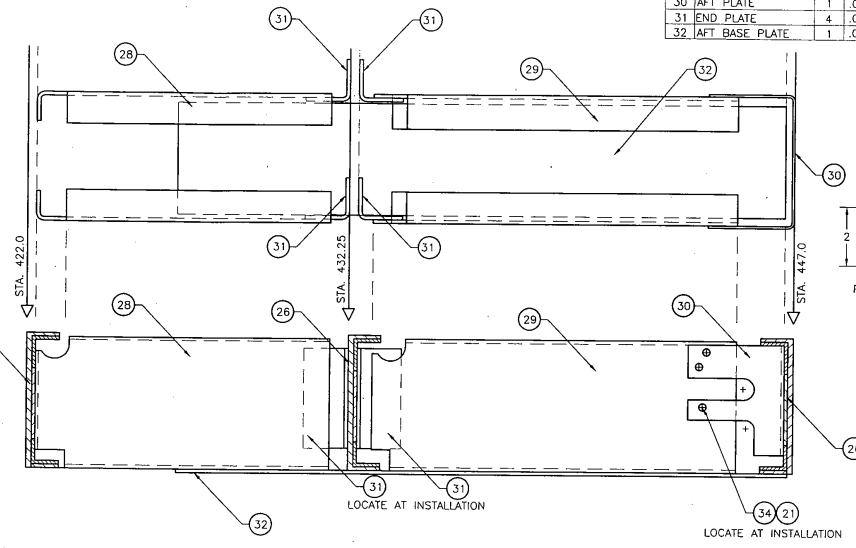
UNLESS OTHERWISE SPECIFIED		DATE	REVISION	BY
TOLERANCES: FRACTIONS +/- 1/16 DECIMALS +/- .030				
ANGLES +/- 2				
DIMENSIONS ARE IN INCHES BREAK SHARP EDGES				
DRAWN	D. MUCCI	TITLE		
DESIGNED	RJK	U. S. DEPT. OF AGRICULTURE FOREST SERVICE		
CHECKED	RJK	TECHNOLOGY & DEVELOPMENT CENTER MISSOULA, MONTANA		
APPROVED	RJK	C-23 HORIZONTAL ANCHOR		
SCALE	FULL	SHEET 3 OF 5		
DATE	09/20/95	MTDC-896		

### MATERIAL LIST

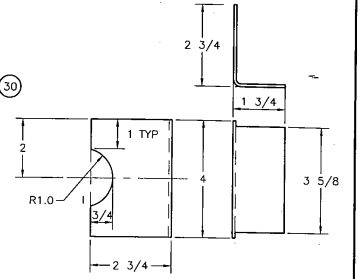
NO	PART NAME	REQD	MATERIAL-DESCRIPTION	SHEET
28	AFT STRINGER PLATE			
A		2	.063 ALUMINUM SHEET 2024-T3	
29	AFT STRINGER PLATE			
B		2	RH & LH PARTS	
30	AFT PLATE	1	.063 ALUMINUM SHEET 2024-T3	
31	END PLATE	4	.090 ALUMINUM SHEET 2024-T3	
32	AFT BASE PLATE	1	.090 ALUMINUM SHEET 2024-T3	



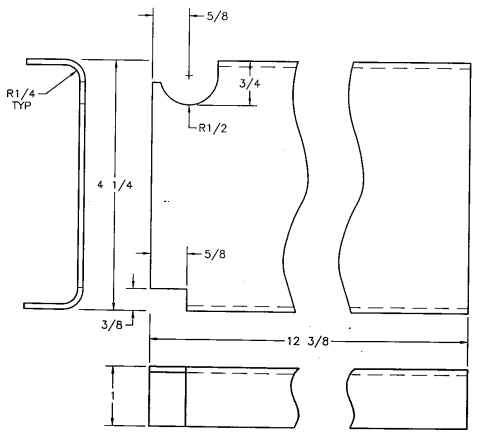
**28 AFT STRINGER PLATE A**  
 FULL SCALE  
 CONSTRUCT LH & RH  
 (LH SHOWN)



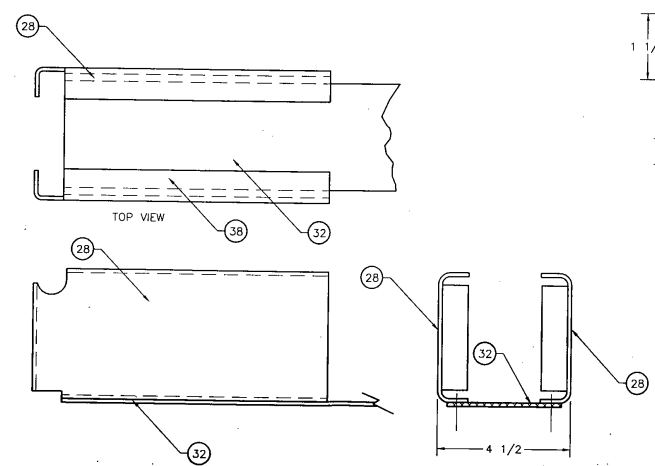
**AFT STRINGER BOX ASS'Y DETAIL**  
 NOT TO SCALE



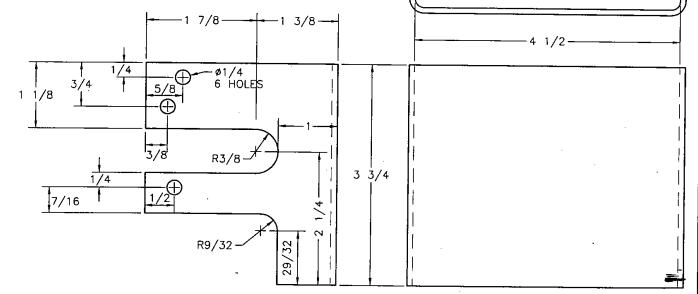
**31 END PLATES**  
 HALF SCALE  
 CUT OUT ON ONE  
 PIECE ONLY



**29 AFT STRINGER PLATE B**  
 FULL SCALE  
 CONSTRUCT RH & LH PARTS  
 LH SHOWN



**AFT STRINGER BOX A ASS'Y DETAIL**  
 HALF SCALE

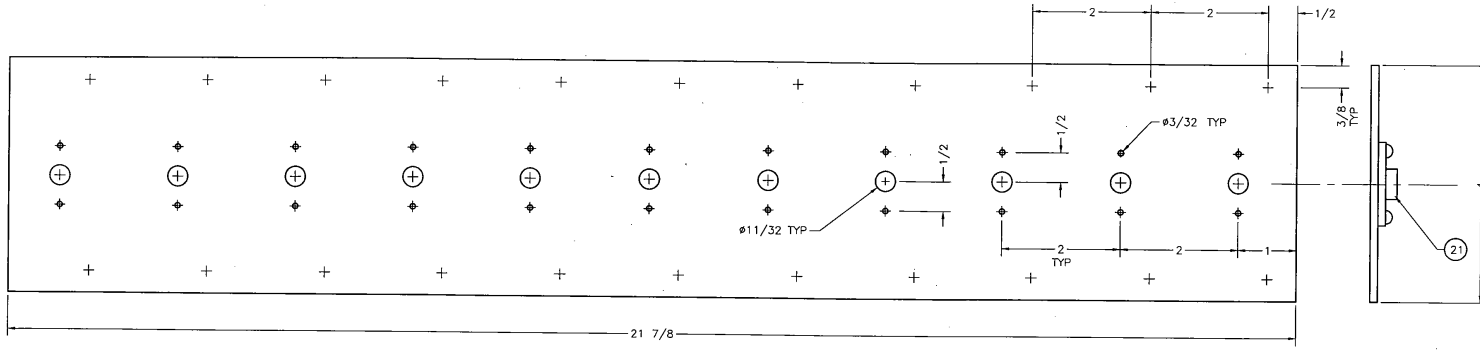


**30 AFT PLATE**  
 FULL SCALE

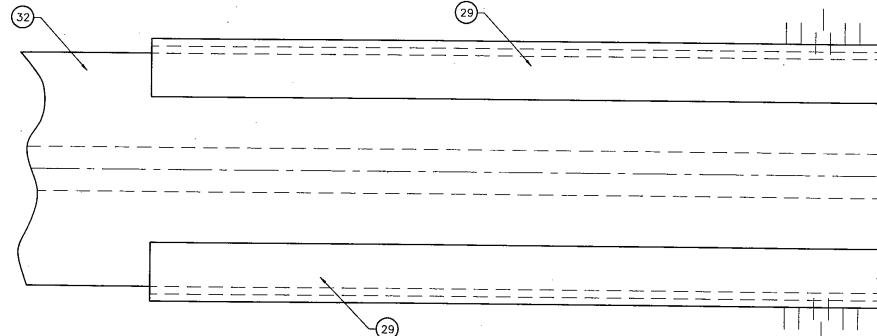
UNLESS OTHERWISE SPECIFIED		DATE	REVISION	BY
TOLERANCES:				
FRACTIONS +/- 1/16				
DECIMALS +/- .030				
ANGLES +/- .2				
DIMENSIONS ARE IN INCHES				
BREAK SHARP EDGES				
DRAWN	D. MUCCI	U. S. DEPT. OF AGRICULTURE FOREST SERVICE		
DESIGNED	RJK	TECHNOLOGY & DEVELOPMENT CENTER MISSOULA, MONTANA		
CHECKED	RJK	TITLE		
APPROVED	RJK	C-23 HORIZONTAL ANCHOR		
SCALE	FULL			
DATE	09/20/95	SHEET 4 OF 5	MTDC-896	

MATERIAL LIST

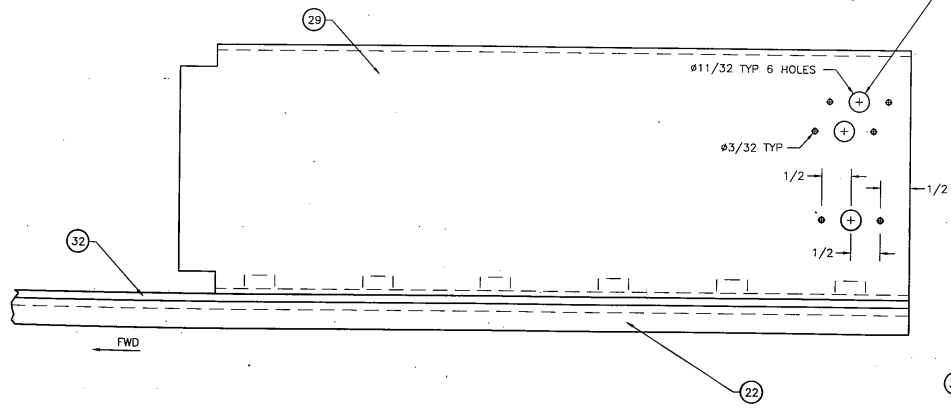
NO	PART NAME	REQD	MATERIAL DESCRIPTION	SHEET
33	AFT PLATE	1	.063 ALUMINUM SHEET 2024-T3	
34	CAP SCREW	6	1/4 - 20 UNC X 1/2 ROUND HEAD SOCKET GR5	



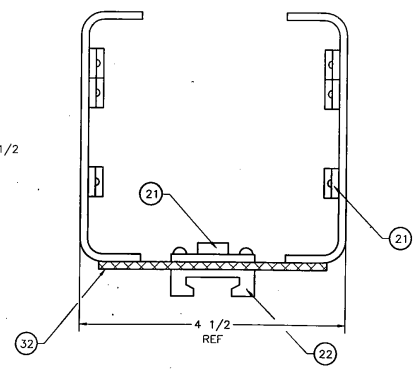
32 AFT BASE PLATE  
FULL SCALE



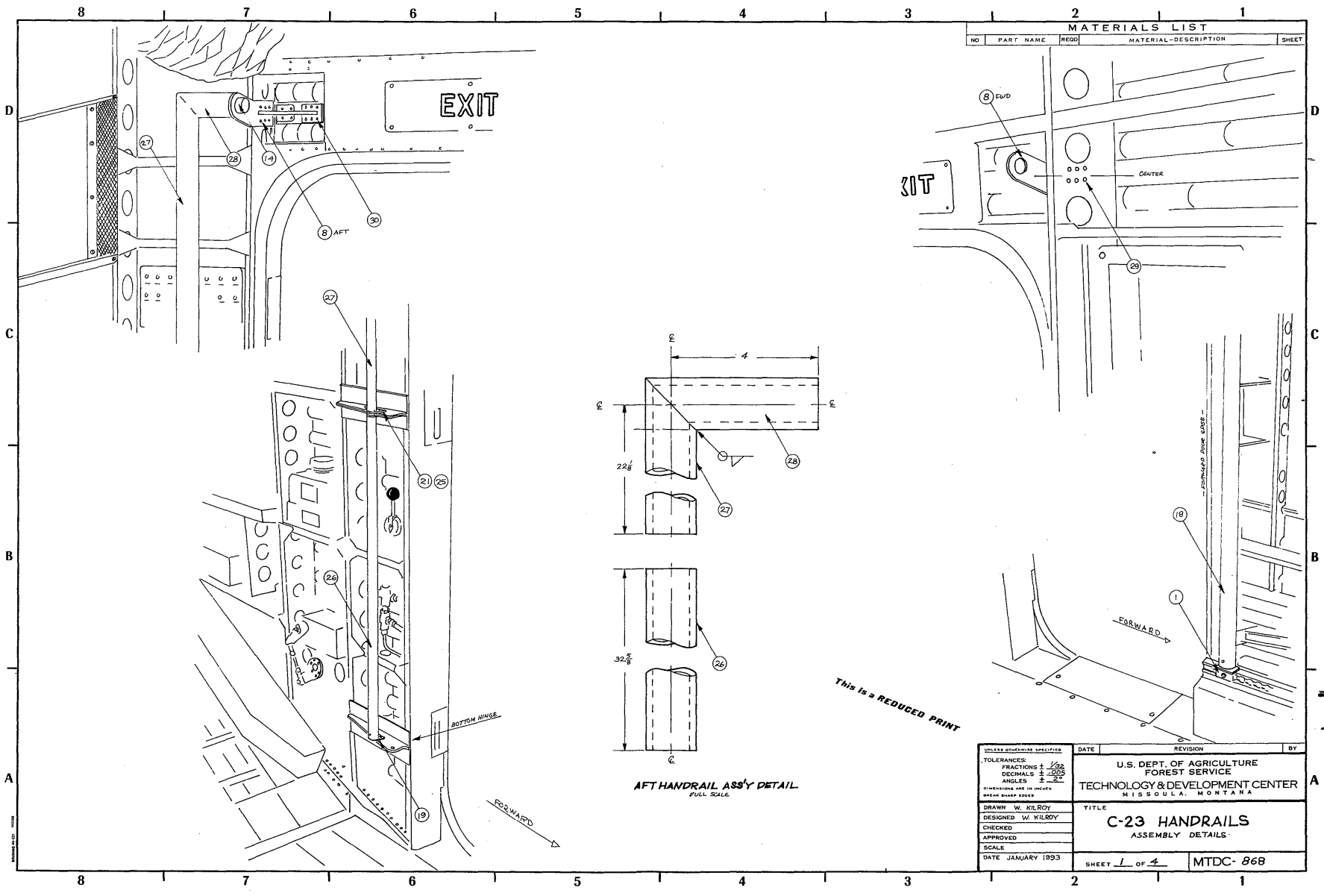
AFT STRINGER BOX ASS'Y DETAIL  
FULL SCALE



NOTE:  
LOCATE NUT PLATES AND  
DRILL AT INSTALLATION  
USE AFT PLATE AS TEMPLATE

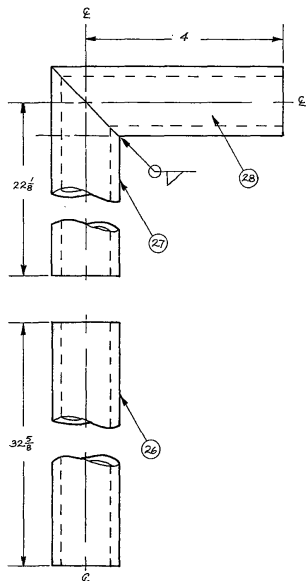


UNLESS OTHERWISE SPECIFIED		DATE	REVISION	BY
TOLERANCES:				
FRACTIONS +/- 1/16				
DECIMALS +/- .030				
ANGLES +/- 2				
DIMENSIONS ARE IN INCHES UNLESS SHOWN OTHERWISE				
DRAWN	D.MUCCI			
DESIGNED	RJK			
CHECKED	RJK			
APPROVED	RJK			
SCALE	FULL			
DATE	09/20/95			
TITLE		U. S. DEPT. OF AGRICULTURE FOREST SERVICE TECHNOLOGY & DEVELOPMENT CENTER MISSOULA, MONTANA		
SCALE		C-23 HORIZONTAL ANCHOR		
DATE		SHEET 5 OF 5		MTDC- 896



MATERIALS LIST			
NO	PART NAME	REQD	MATERIAL-DESCRIPTION

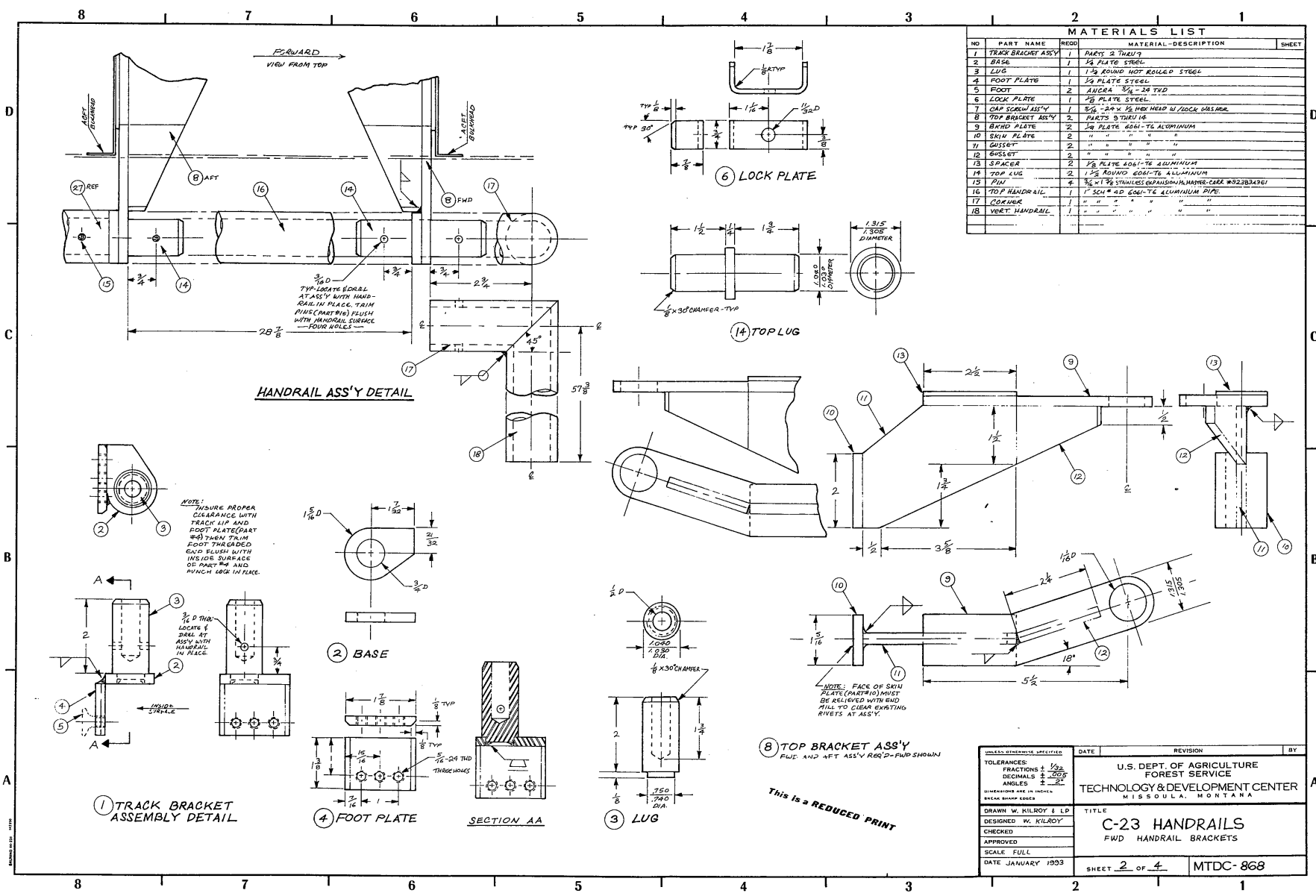
NO	PART NAME	REQD	MATERIAL-DESCRIPTION
8	FWD		
1			
19			
21			
25			
26			
27			
28			
29			



AFT HANDRAIL ASS'Y DETAIL  
FULL SCALE

This is a REDUCED PRINT

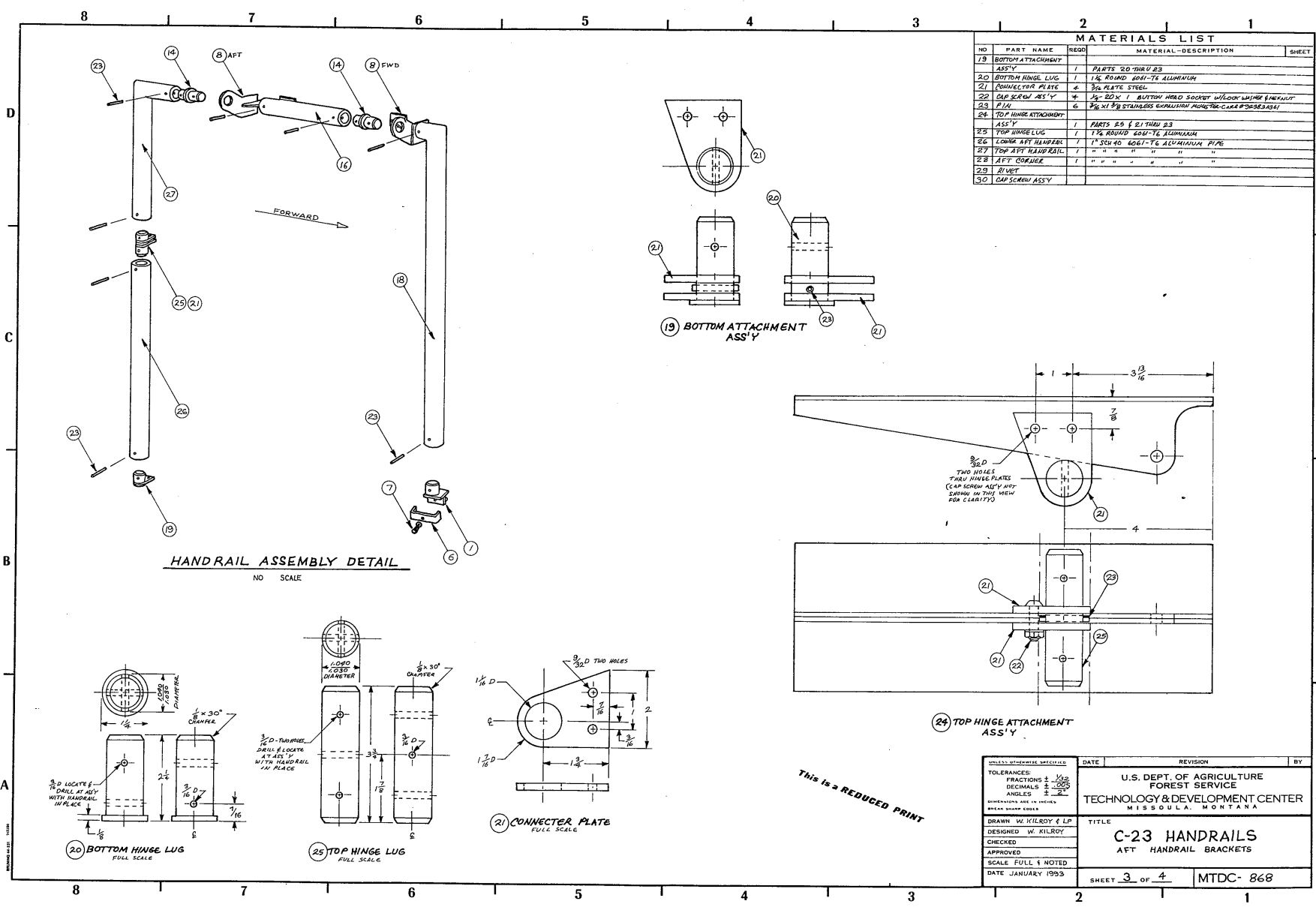
U.S. DEPT. OF AGRICULTURE FOREST SERVICE TECHNOLOGY & DEVELOPMENT CENTER MISSOULA, MONTANA	TITLE <b>C-23 HANDRAILS</b> ASSEMBLY DETAILS
DRAWN W. KILROY DESIGNED W. KILROY CHECKED APPROVED SCALE DATE JANUARY 1993	SHEET 1 OF 1 MTDC- 868



MATERIALS LIST				
NO	PART NAME	REQD	MATERIAL DESCRIPTION	SHEET
1	TRACK BRACKET ASSY	1	PARTS 2 THROUGH	
2	BASE	1	1/2 PLATE STEEL	
3	LUG	1	1 1/2 ROUND HOT ROLLED STEEL	
4	FOOT PLATE	1	1/4 PLATE STEEL	
5	FOOT	2	ALUMINUM 3/8" - 24 TPI	
6	LOCK PLATE	1	1/8 PLATE STEEL	
7	OMP BRACKET ASS'Y	1	5/8" - 24 X 1/2 HEX HEAD W/LOCK WASHER	
8	TOP BRACKET ASS'Y	2	PARTS 9 THRU 14	
9	BRND PLATE	2	1/8 PLATE 6061-T6 ALUMINUM	
10	SKIN PL STE	2	" " " " " "	
11	GRIP ST	2	" " " " " "	
12	BUSHLET	2	" " " " " "	
13	SPACER	2	1/8 PLATE 6061-T6 ALUMINUM	
14	TOP LUG	2	1 1/2 ROUND 6061-T6 ALUMINUM	
15	PIV	4	3/8 X 1 1/2 STAINLESS STEEL 304 W/SHIMMER CASE #52334361	
16	TOP HANDRAIL	1	1" SCH 40 6061-T6 ALUMINUM PIPE	
17	CORNER	1	" " " " " "	
18	VERT HANDRAIL	1	" " " " " "	

UNLESS OTHERWISE SPECIFIED		DATE	REVISION	BY
TOLERANCES:				
FRACTIONS ± 1/32				
DECIMALS ± .005				
ANGLES ± 1°				
HIDDEN DIMS IN PARENTH				
BREAK SHARP EDGES				
DRAWN W. KILROY & LP		TITLE		
DESIGNED W. KILROY		C-23 HANDRAILS		
CHECKED		FWD HANDRAIL BRACKETS		
APPROVED		SCALE FULL		
DATE JANUARY 1993		SHEET 2 OF 4	MTDC-868	

This is a REDUCED PRINT



MATERIALS LIST			SHEET
NO	PART NAME	REQD	MATERIAL-DESCRIPTION
19	BOTTOM ATTACHMENT ASS'Y	1	PARTS 20 THRU 23
20	BOTTOM HINGE LUG	1	1 1/2" ROUND 6061-T6 ALUMINUM
21	CONNECTOR PLATE	4	3/16" PLATE STEEL
22	CAP SCREW ASS'Y	4	1/2" X 20 X 1" BUTTON HEAD SOCKET W/ LOCK WASH & NUT
23	PLATE	6	3/16" X 1 1/2" STAINLESS EXPANDED METAL HINGE-TYPE CAP SCREW
24	TOP HINGE ATTACHMENT ASS'Y	1	PARTS 25 & 21 THRU 23
25	TOP HINGE LUG	1	1 1/2" ROUND 6061-T6 ALUMINUM
26	LONGER AFT HANDBAIL	1	1" X 3/4" X 40" 6061-T6 ALUMINUM PIPE
27	TOP AFT HANDBAIL	1	" " " " " " " "
28	AFT CORNER	1	" " " " " " " "
29	RIVET	"	" " " " " " " "
30	CAP SCREW ASS'Y	"	" " " " " " " "

**HANDRAIL ASSEMBLY DETAIL**  
NO SCALE

**20 BOTTOM HINGE LUG**  
FULL SCALE

**25 TOP HINGE LUG**  
FULL SCALE

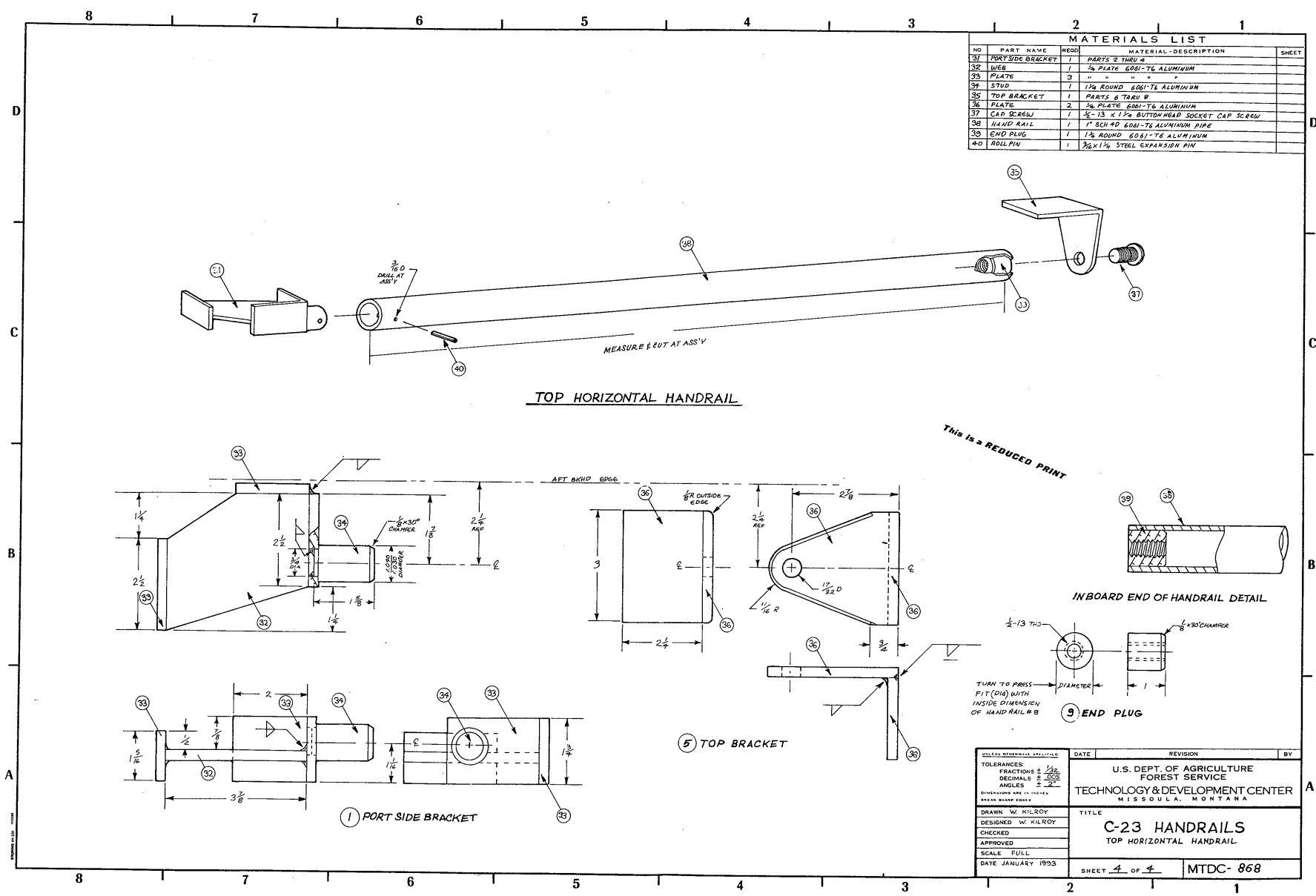
**21 CONNECTOR PLATE**  
FULL SCALE

**24 TOP HINGE ATTACHMENT ASS'Y**

**19 BOTTOM ATTACHMENT ASS'Y**

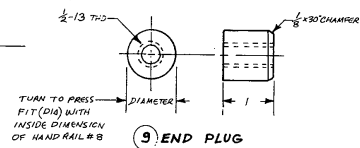
UNLESS OTHERWISE SPECIFIED	DATE	REVISION	BY
TOLERANCES: FRACTIONS ± 1/32 DECIMALS ± .005 ANGLES ± .2°			
DIMENSIONS ARE IN INCHES BREAK SHARP EDGES			
DRAWN W. KILROY & LP DESIGNED W. KILROY CHECKED APPROVED		U.S. DEPT. OF AGRICULTURE FOREST SERVICE TECHNOLOGY & DEVELOPMENT CENTER MISSOULA, MONTANA	
SCALE FULL & NOTED DATE JANUARY 1993		TITLE <b>C-23 HANDRAILS</b> AFT HANDBAIL BRACKETS	
	SHEET 3 OF 4		MTDC- 868

*This is a REDUCED PRINT*



MATERIALS LIST			
NO	PART NAME	QTY	MATERIAL-DESCRIPTION
31	PORT SIDE BRACKET	1	PARTS 2 THRU 4
32	WELD	1	1/2 PLATE 6061-T6 ALUMINUM
33	PLATE	3	" " " "
34	STUD	1	1/2 ROUND 6061-T6 ALUMINUM
35	TOP BRACKET	1	PARTS 6 THRU 8
36	PLATE	2	1/2 PLATE 6061-T6 ALUMINUM
37	CAP SCREW	1	1/2-13 X 1 1/2 BUTTON HEAD SOCKET CAP SCREW
38	HAND RAIL	1	1" SCH 40 6061-T6 ALUMINUM PIPE
39	END PLUG	1	1/2 ROUND 6061-T6 ALUMINUM
40	ROLL PIN	1	3/16 X 1 1/2 STEEL EXPANSION PIN

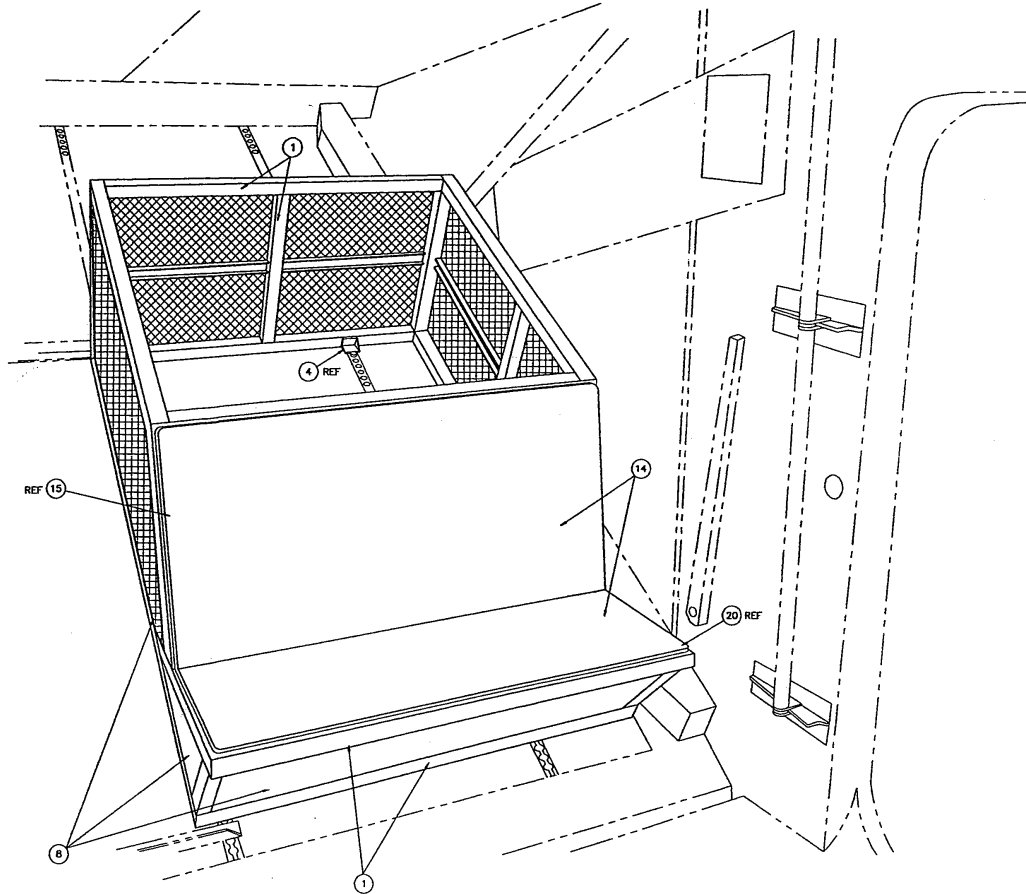
This is a REDUCED PRINT



UNLESS OTHERWISE SPECIFIED	DATE	REVISION	BY
TOLERANCES: FRACTIONS ± 1/32 DECIMALS ± 0.005 ANGLES ± 2°			
DRAWN W. KILROY	U.S. DEPT. OF AGRICULTURE FOREST SERVICE		
DESIGNED W. KILROY	TECHNOLOGY & DEVELOPMENT CENTER MISSOULA, MONTANA		
CHECKED	TITLE		
APPROVED	C-23 HANDRAILS TOP HORIZONTAL HANDRAIL		
SCALE FULL	SHEET 4 of 4		
DATE JANUARY 1953	MTDC- 868		

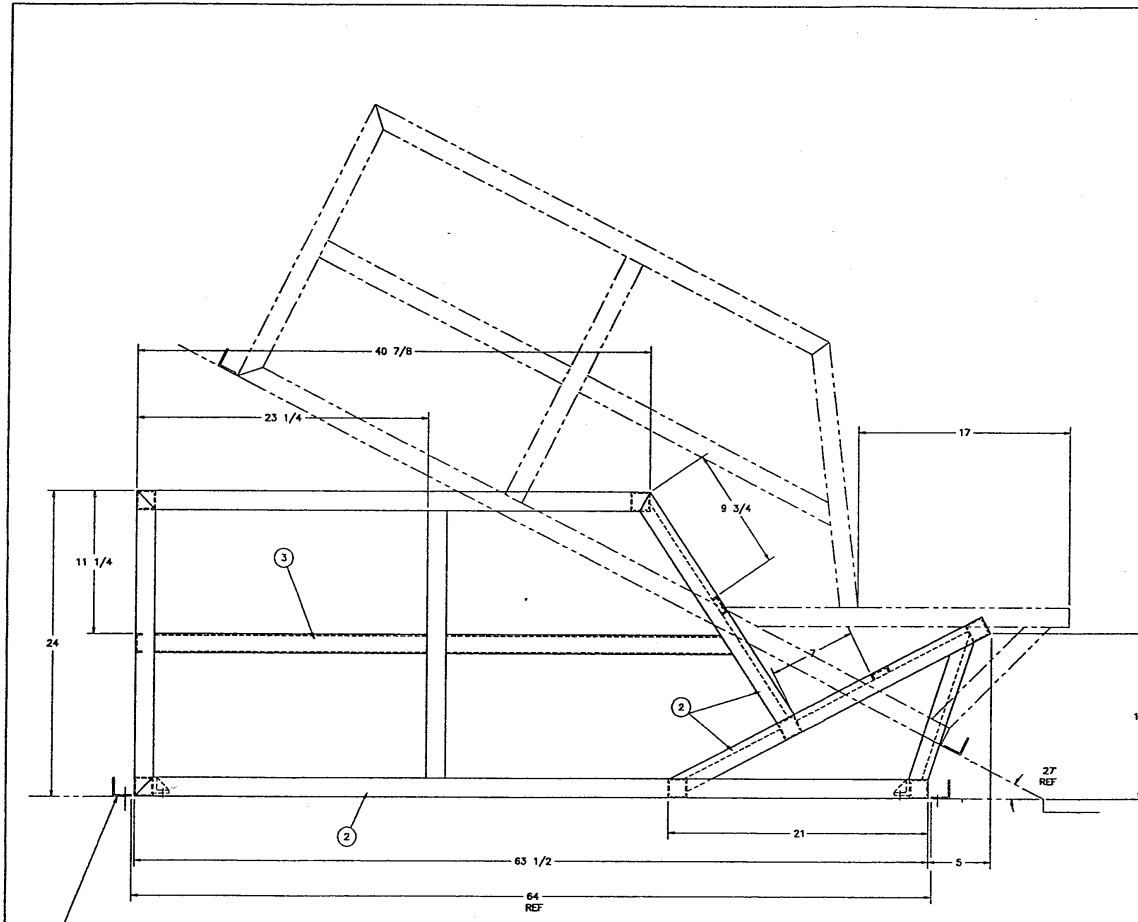
### MATERIAL LIST

NO	PART NAME	QTY	MATERIAL-DESCRIPTION	SHEET
1	FRAME	1	PARTS 2 - 7.	2-4
8	SKIN PANELS	AR	PARTS 9 - 13.	5
14	SEAT ASSEMBLY	1	PARTS 15 - 25.	6



TOLERANCES:	DATE	REVISION	BY
FRACTIONS +/-			
DECIMALS +/-			
ANGLES +/-			
U. S. DEPT. OF AGRICULTURE FOREST SERVICE TECHNOLOGY & DEVELOPMENT CENTER MISSOULA, MONTANA			
DRAWN BILL WYATT	TITLE		
DESIGNED	C-23 CARGO BIN		
CHECKED D. PIERCE	<small>881_238A/14557</small>		
SCALE NONE	DATE	SHEET	OF
DATE SEPT. - 92		1	OF
			MTDC- 881

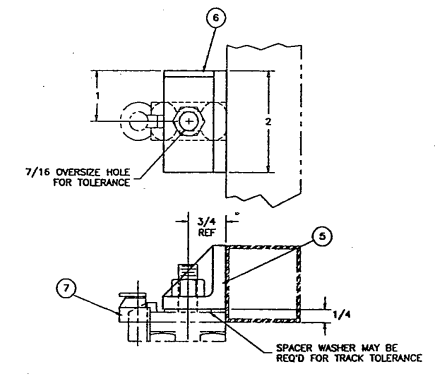




1 FRAME - SIDEVIEW  
SEE SHEETS 3 & 4  
WELDED CONSTRUCTION  
SPECIFIC WELDS NOTED

MATERIAL LIST

NO.	PART NAME	REQD.	MATERIAL-DESCRIPTION	SHEET
1	FRAME	1	PARTS 2 - 7	2-4
2	MAIN FRAMING	AR	1 1/2 X .0625 WALL SQ. TUBE, 6063-T8 ALUM.	
3	SUB FRAMING	AR	1 1/2 X 1/2 X 1/8 BAR CHANNEL, 6063 ALUM.	
4	TRACK BRACKET	4	PARTS 5 - 7	
5	BASE	4	1 1/4 X 1 1/4 X 1/4 ANGLE, 6061 ALUM.	
6	CLIPSET	4	1/8 PLATE, 6061 ALUMINUM	
7	TRACK STUD ASSY.	4	ANCR. NO. 48443 W/ 3/8-24 STOP NUT.	



4 TRACK BRACKET  
SCALE ~ FULL

DATE	REVISION	BY
SEPT. - 92		

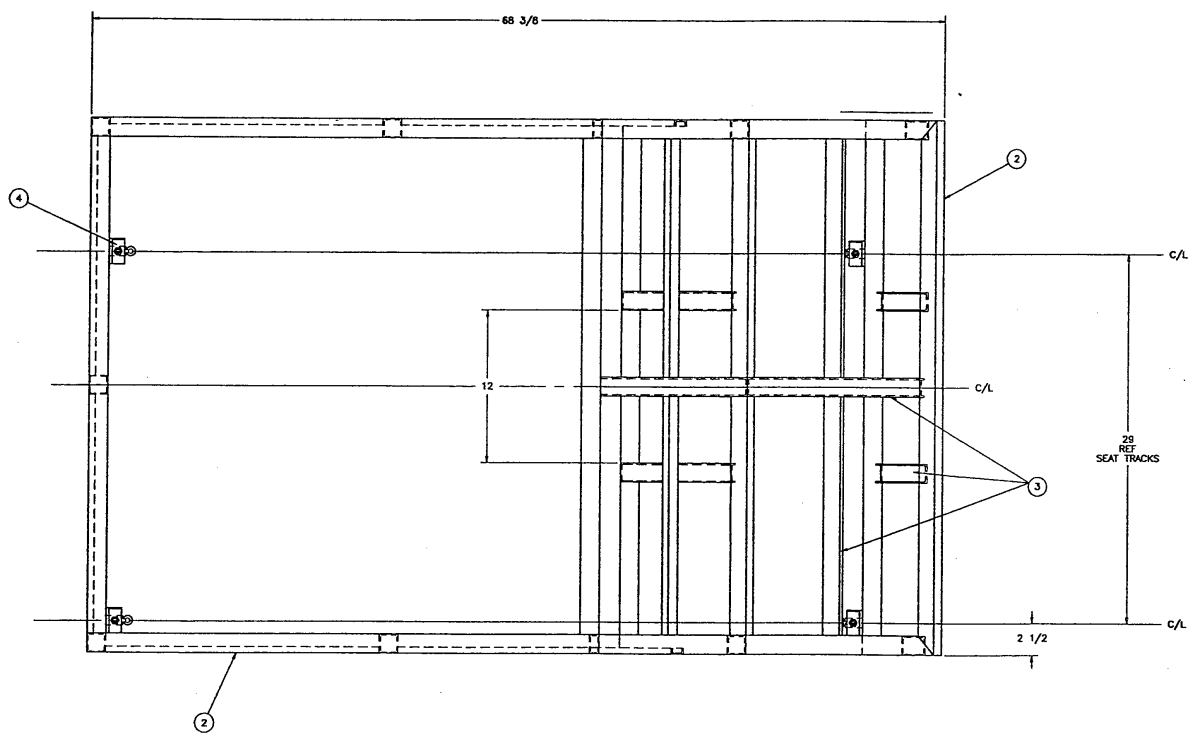
  

TOLERANCES:	+	-	
FRACTIONS	+/	-/	
DIMENALS	+/	-/	
ANGLES	+/	-/	
UNLESS NOTED OTHERWISE			
DRAWN: BILL WYATT			
DESIGNED: _____			
CHECKED: _____			
APPROVED: D. PIERCE			
SCALE	1/4	801-230A, 27R45DC	
DATE	SEPT. - 92	SHEET 2 OF	MTDC- 881

U. S. DEPT. OF AGRICULTURE  
FOREST SERVICE  
TECHNOLOGY & DEVELOPMENT CENTER  
MISSOULA, MONTANA

C-23 CARGO BIN  
FRAME - SIDE VIEW

MATERIAL LIST			
NO	PART NAME	QTY	MATERIAL-DESCRIPTION
SEE SHEET 2			

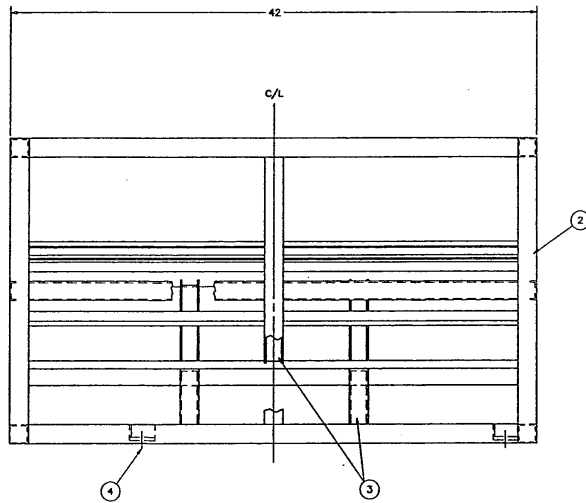


1 FRAME - TOPVIEW  
 SEE SHEETS 2 & 4  
 WELDED CONSTRUCTION  
 SPECIFIC WELDS NOTED

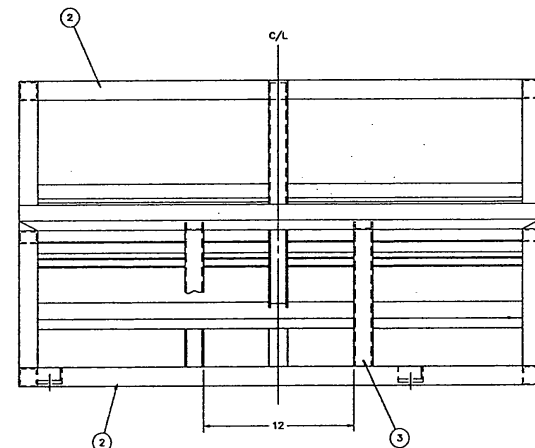
<small>TOLERANCES:</small> FRACTIONS +/- DECIMALS +/- ANGLES +/- <small>UNLESS NOTED OTHERWISE</small>		DATE REVISION BY
DRAWN BILL WYATT DESIGNED CHECKED APPROVED D. PIERCE SCALE 1/4 DATE SEPT. - 82	U. S. DEPT. OF AGRICULTURE FOREST SERVICE TECHNOLOGY & DEVELOPMENT CENTER MISSOULA, MONTANA	TITLE C-23 CARGO BIN FRAME - TOP VIEW
581-238A-3710/TOP		SHEET 3 OF MTDC- 881

MATERIAL LIST

NO	PART NAME	RECD	MATERIAL-DESCRIPTION	SHEET
SEE SHEET 2				



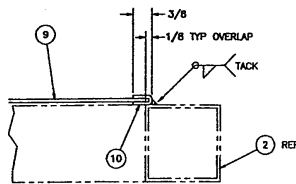
REAR END VIEW



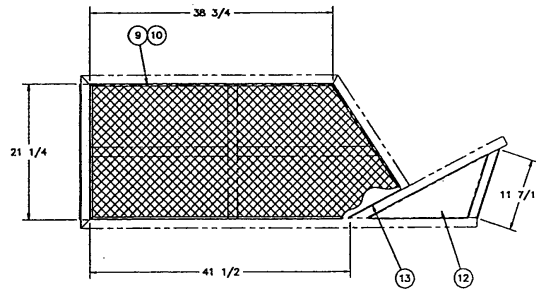
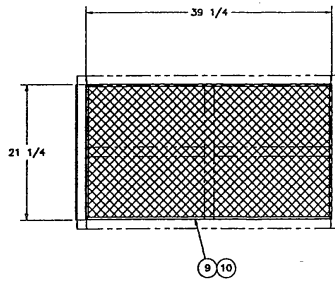
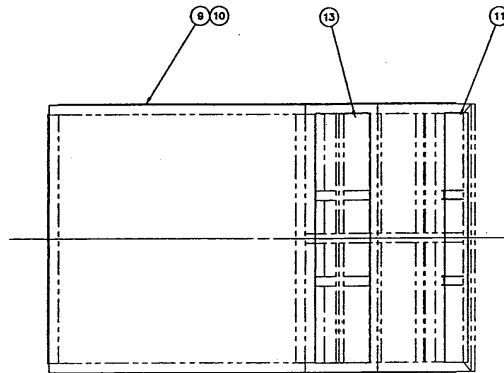
FRONT END VIEW

① FRAME - END VIEWS  
 SEE SHEETS 2 & 3  
 WELDED CONSTRUCTION  
 SPECIFIC WELDS NOTED

U.S. DEPT. OF AGRICULTURE FOREST SERVICE		DATE	REVISION	BY
TECHNOLOGY & DEVELOPMENT CENTER MISSOULA, MONTANA				
TOLERANCES: FRACTIONS +/- --- DECIMALS +/- --- ANGLES +/- --- DIMENSIONS ARE IN INCHES UNLESS SHOWN OTHERWISE	TITLE C-23 CARGO BIN FRAME - END VIEWS			
DRAWN BILL WYATT DESIGNED CHECKED APPROVED O. PIERCE SCALE 1/4 DATE SEPT. - 92	SHEET 4 OF MTDC- 881			

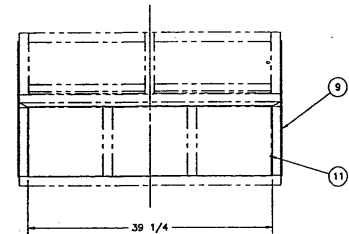


PANEL DETAIL  
SCALE ~ FULL

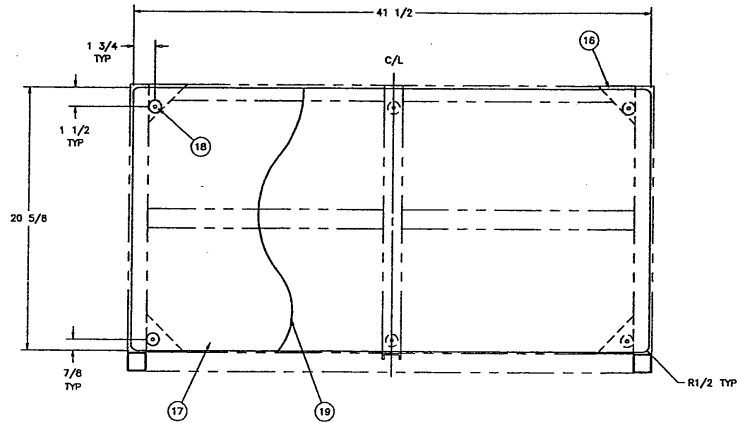


8 SKIN PANELS

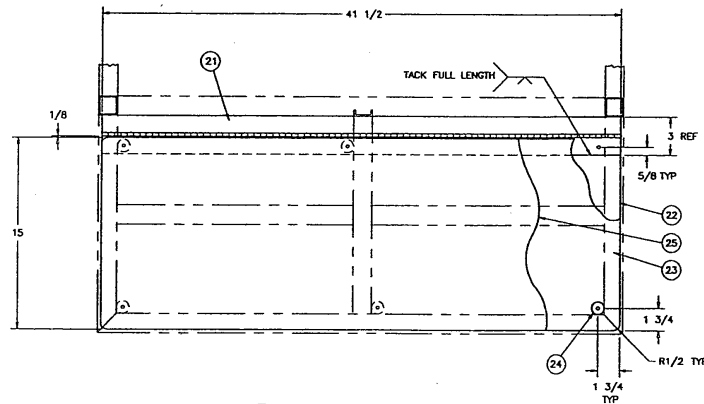
MATERIAL LIST				
NO	PART NAME	REQD	MATERIAL-DESCRIPTION	SHEET
8	SKIN PANELS	AR	PARTS 9 - 13.	
9	OPEN PANEL	3	RYERSON 1/2 NO. .081F FLATTENED EXPANDED METAL .060 THK., 5005-434 ALUM.	
10	OPEN PANEL TRIM	AR	.063 SHEET, 6061 ALUMINUM.	
11	FRONT SOLID PANEL	1	.063 SHEET, 6061 ALUMINUM.	
12	SIDE SOLID PANEL	2	22 X 16 1/4 X 10 5/8 X .063 SHEET, 6061 ALUMINUM.	
13	INSIDE PANEL	1	9 5/8 X 39 1/4 X .063 SHEET, 6061 ALUM.	



TOLERANCES:		DATE	REVISION	BY
FRACCTIONS	+/-			
DECIMALS	+/-			
ANGLES	+/-			
UNLESS SHOWN OTHERWISE				
DRAWN	BILL WYATT	TITLE		
DESIGNED		U. S. DEPT. OF AGRICULTURE FOREST SERVICE		
CHECKED		TECHNOLOGY & DEVELOPMENT CENTER MISSOULA, MONTANA		
APPROVED	D. PIERCE	C-23 CARGO BIN SKIN PANELS		
SCALE	1/8	SHEET 5 OF		
DATE	SEPT. - 92	MTDC - 881		

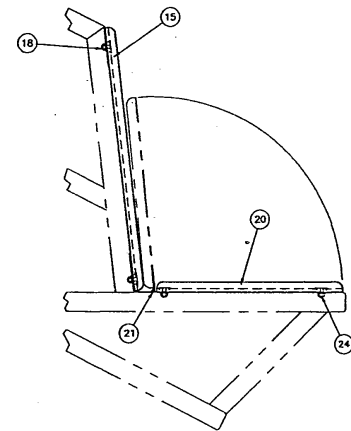


15 SEAT BACK



20 SEAT BOTTOM

MATERIAL LIST				
NO	PART NAME	REQD	MATERIAL-DESCRIPTION	SHEET
14	SEAT ASSEMBLY	1	PARTS 15 - 25.	
15	SEAT BACK	1	PARTS 16 - 19.	
16	CORNER BRACKET	4	3 X 3 X 45 DEG. X .063 SHEET, 6061 ALUM.	
17	BASE	1	1/4 PLYWOOD, A/C GRADE.	
18	BOLT ASSEMBLY	6	1/4-20 X 3/4 FANGED ELEVATOR BOLT W/ NUT & LOCK WASHER.	
19	CUSHION	1	12 OZ. COATED NYLON W/ 1/2 THK. H. DENSITY URETHANE FOAM.	
20	SEAT BOTTOM	1	PARTS 21 - 25.	
21	CONTINUOUS HINGE	1	3 X .062 X 1/8 PIN SIZE, ALUMINUM.	
22	SEAT PLATE	1	.063 SHEET, 6061 ALUMINUM.	
23	BASE	1	1/4 PLYWOOD, A/C GRADE.	
24	BOLT ASSEMBLY	6	1/4-20 X 3/4 FANGED ELEVATOR BOLT W/ NUT & LOCK WASHER.	
25	CUSHION	1	12 OZ. COATED NYLON W/ 1/2 THK. H. DENSITY URETHANE FOAM.	

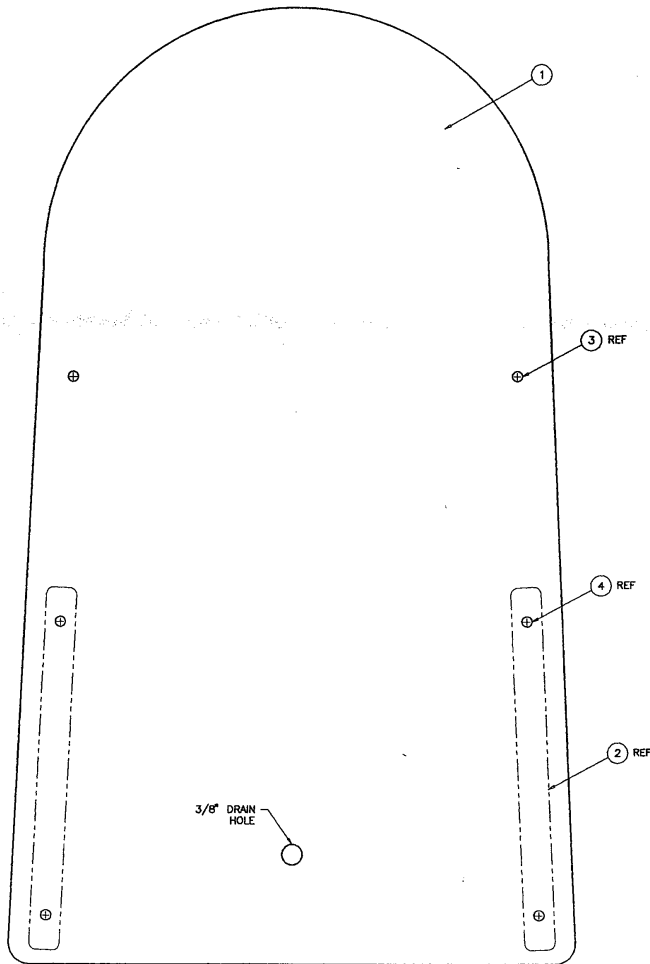


14 SEAT ASSEMBLY

UNLESS OTHERWISE SPECIFIED:		DATE	REVISION	BY
TOLERANCES:				
FRACTIONS	+/-			
DECIMALS	+/-			
ANGLES	+/-			
DRAWN BILL WYATT		U. S. DEPT. OF AGRICULTURE FOREST SERVICE		
DESIGNED		TECHNOLOGY & DEVELOPMENT CENTER MISSOULA, MONTANA		
CHECKED		TITLE		
APPROVED D. PIERCE		C-23 CARGO BIN SEAT ASSEMBLY		
SCALE	1/4	881-238H(92A)		
DATE	SEPT. - 92	SHEET 6	OF	MTDC- 881

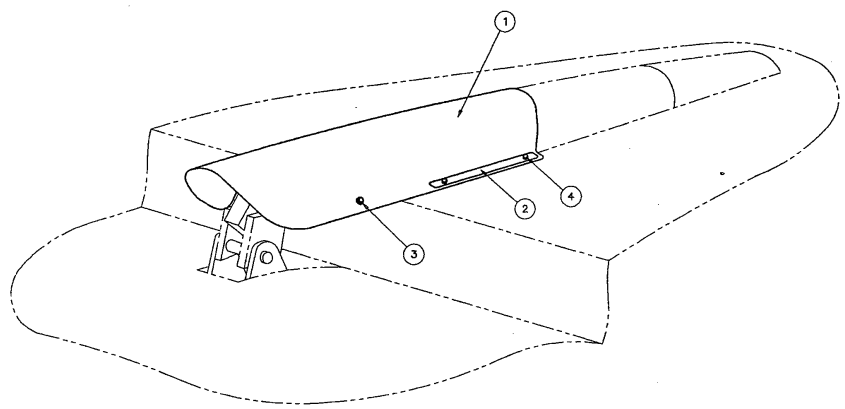
## MATERIAL LIST

NO	PART NAME	REQD	MATERIAL-DESCRIPTION	SHEET
1	PROTECTOR	1	1/8" THICK NEOPRENE	
2	STRAPS	2	6 5/8 x 9/16 x .080 2024-T3	
3	PAN HEAD SCREWS	2	AN525-10R10 W/WASHERS	
4	PAN HEAD SCREWS	4	AN525-10R12	



PROTECTOR PATTERN

NOTE:  
THIS PROTECTOR IS INSTALLED OVER AN EXISTING FAIRING IN THE CENTER OF THE C-23A HORIZONTAL STABILIZER. IT IS ATTACHED USING EXISTING SCREW HOLES. THE PURPOSE OF THIS DEVICE IS TO PREVENT DEPLOYMENT DAMAGE TO PARACHUTE CANOPIES CAUSED BY CONTACT WITH THE ELEVATOR CONTROL ROD MECHANISM.



UNLESS OTHERWISE SPECIFIED:	DATE	REVISION	BY
TOLERANCES: FRACTIONS +/- ____ DECIMALS +/- ____ ANGLES +/- ____ DIMENSIONS ARE IN INCHES UNLESS SHOWN OTHERWISE			
		U. S. DEPT. OF AGRICULTURE FOREST SERVICE TECHNOLOGY & DEVELOPMENT CENTER MISSOULA, MONTANA	
DRAWN W.A.G./WYATT	TITLE		
DESIGNED	C-23A ELEVATOR CONTROL		
CHECKED	ROD PROTECTOR		
APPROVED D. PIERCE	PATTERN		
SCALE FULL	921-1		
DATE APR - 95	SHEET 1 OF 1	MTDC- 921	