

Leadplane Training Lesson Plan

Flight 3, Scenarios 1b and 3b

13-03-N9065-HO

Objective:

Demonstrate clear and concise radio calls and communication procedures.

Demonstrate good decision making while determining leadplane profiles.

Demonstrate positive aircraft control while flying leadplane profiles.

Content:

Pre Flight Briefing (15 minutes)

- Flight 1 review

- Flight 2 briefing

- Review flight scenario

Preflight (15 minutes)

Flight (1.0 hours)

Taxi

- GPS set up

- FM radio set up

- Tanker base operations

Airport Departure

- Dispatch

In Route

- In route procedures

FTA

- FTA radio calls and procedures

- Mountain flying techniques

 - Winds

Turbulence

Terrain

Ridge crossings

High and low recon

Introduction to leadplane flight profiles

Visual effects over high or low terrain

Aircraft configuration

Pattern work – left hand

Airspeed control

Exit procedures

Target descriptions

Departing the FTA

Dispatch radio calls

Tanker base radio calls

Air Traffic Control

Post Flight

Dispatch

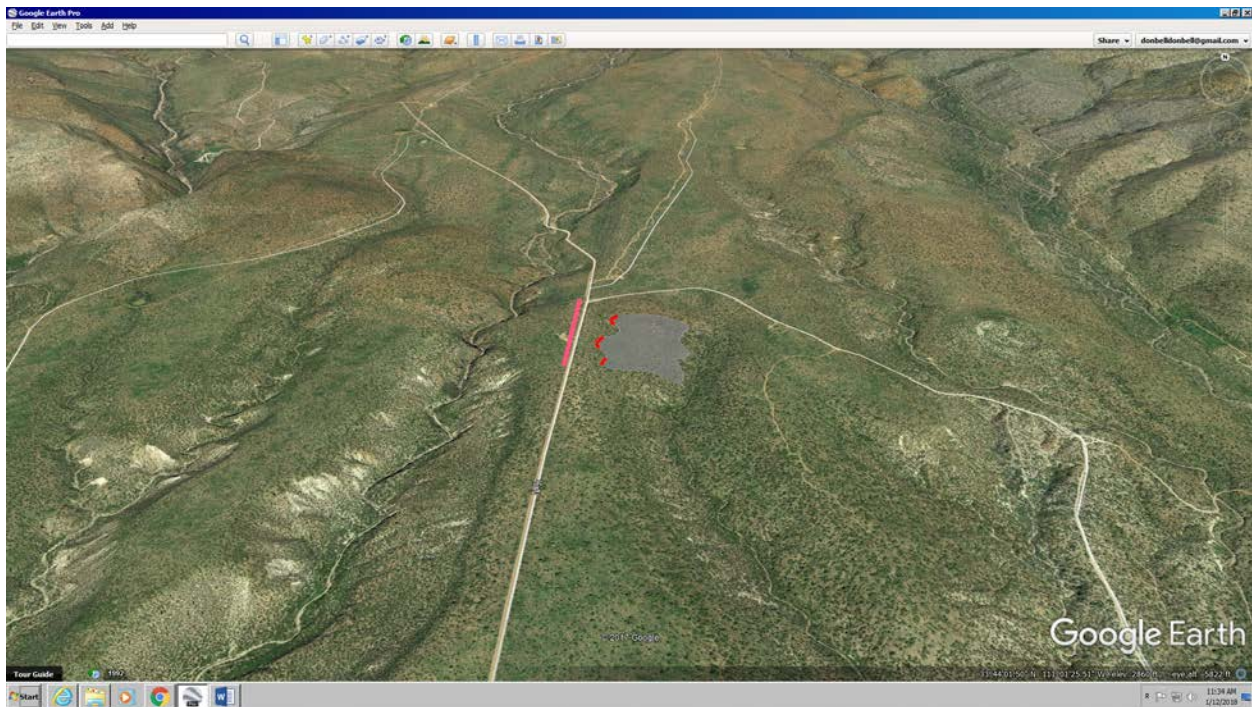
Fuel

Preparing the aircraft for the next dispatch

Post Flight Briefing (30 minutes)

Review flight 2

Armor Practice Area, Flight 3, Scenario 1b
N334406 / W11110129

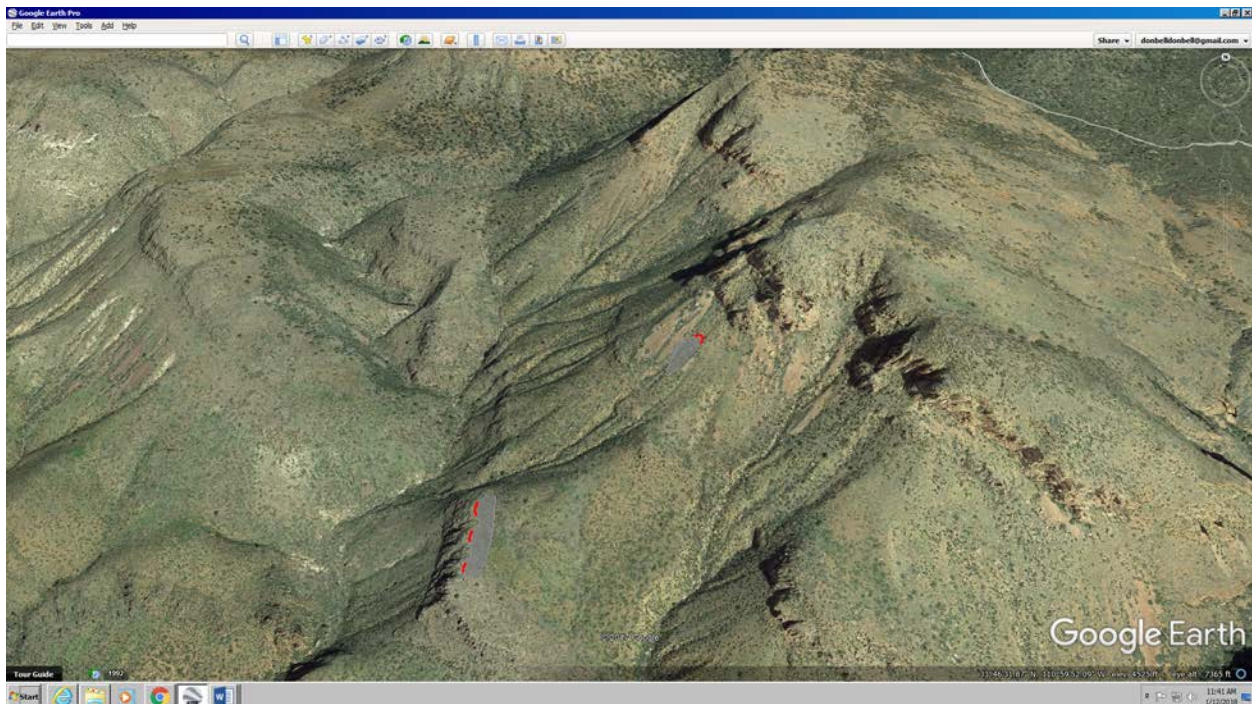


Scenario photos are to aid in the communication between the evaluator and the student.

The goal of this scenario will be to introduce right hand patterns. Right hand patterns can be introduced over terrain from Scenario 1a to minimize the terrain's influence on patterns.

Armor Practice Area, Flight 3, Scenario 3b

N334634 / W1105953



Scenario photos are to aid in the communication between the evaluator and the student.

Small fire, middle third of the slope, low intensity, direct attack. The goal of the retardant drop will be to minimize the fires spread.

The goal of this scenario will be to fly a pattern with wings parallel to the terrain. The pattern will allow a tanker to drop across the head, start stop, and then side step down the slope with subsequent drops. The use of the anchor points should be addressed and the inaccessible terrain for firefighters. The position of this fire will cause the leadplane pattern to be adjusted for terrain. The steepness of the terrain will make it difficult to fly down slope and maintain airspeed. Flying cross slope will be difficult due to the proximity of the aircraft wingtip to the up slope side of the fire.

Completion Standards:

The lesson is complete when the student can demonstrate appropriate radio calls and communication procedures.

The lesson is complete when the student can demonstrate appropriate mountain flying and leadplane profiles.

Armor Practice Area, Scenarios 1 thru 4 Locations

