

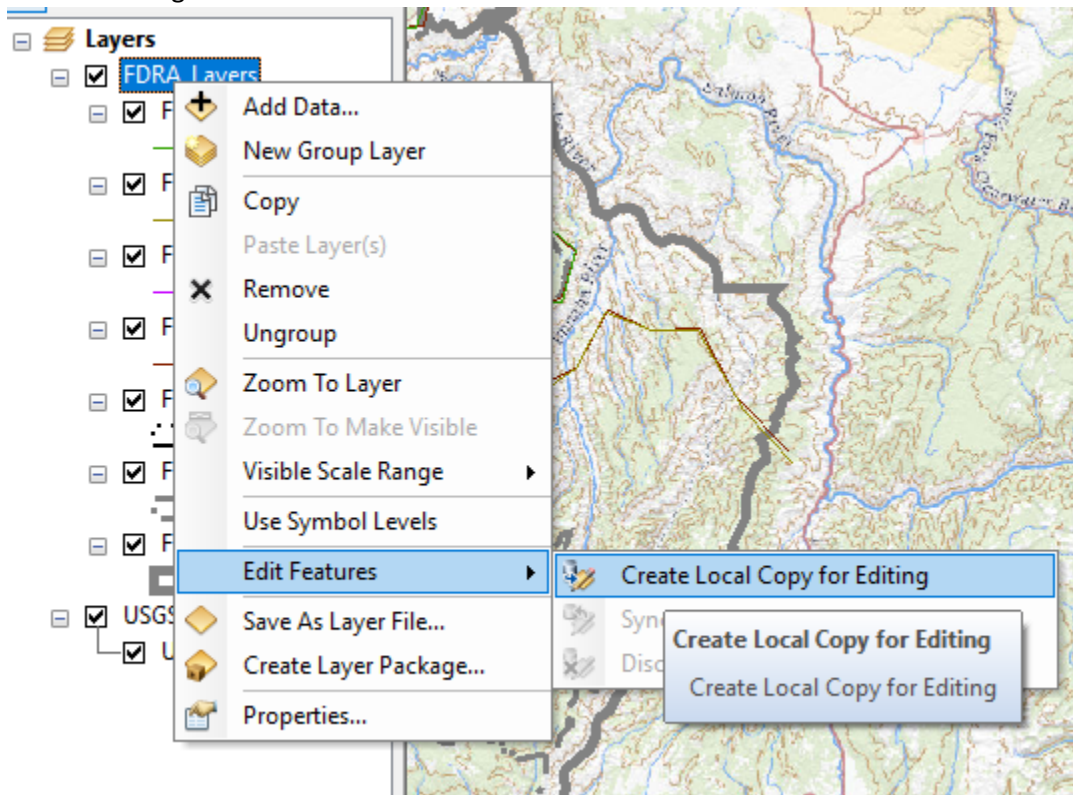
TechTip #2b

Converting “Final Break” Lines into Edge-Matched Fire Danger Rating Areas

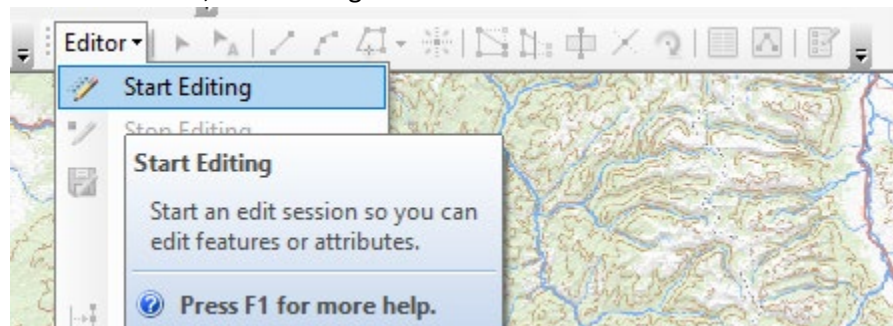
Use this tech tip if your unit does not have response areas


Requirements: You must have ArcGIS 10.3 or higher and a Standard or Advanced license in order to use this tutorial.

1. Open the Fire Danger Rating layers in ArcMap using the instructions in Tech Tip 3.
2. Zoom to your study area. The fewer things you have on your map, the fewer things get pulled into your local copy, and the fewer chances for mistakes that affect others' data.
3. Make a local copy of the FDRA Layers feature class for editing.
 - a. Right-click on FDRA_Layers, select “Edit Features”, and then click “Create Local Copy For Editing”



4. Using the Editor Toolbar, start editing.



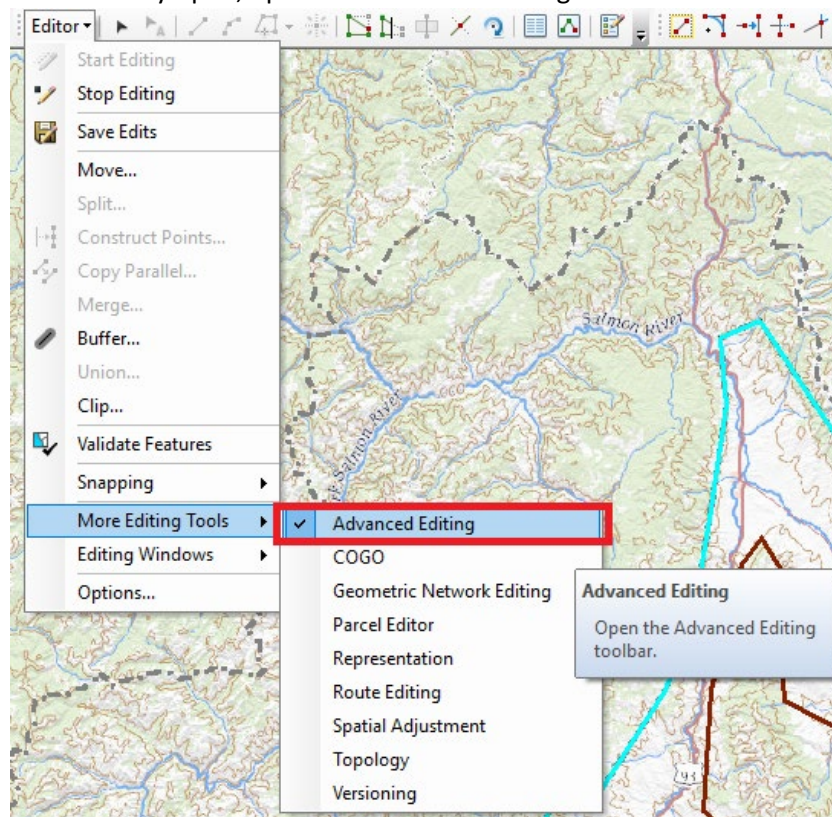
- a.
5. Copy the Study Area boundary for your Study Area to the FDRA_Boundaries_poly feature class and attribute it appropriately.
 - a. Select your FDOP Study Areas Boundary feature using the Select Features  tool.
 - b. Go to Edit/Copy

TechTip #2b

Converting “Final Break” Lines into Edge-Matched Fire Danger Rating Areas

Use this tech tip if your unit does not have response areas

- c. Go to Edit/Paste
 - d. Choose FDRA_Boundaries_poly
 - e. Clear your selection and turn off your Study Area boundary.
 - f. Now you have a single FDRA polygon that overs your entire study area.
6. Use features in FDRA_Final_Breaks feature class to “split” the FDRA into the appropriate pieces.
- a. Users of the FDRA Creation tool have been instructed to construct final break lines that begin outside the FDOP Boundary, cross into the FDOP, and then cross outside the FDOP boundary before ending. If the user-drawn features in FDRA_Final_Breaks end *inside* the FDOP boundary, you will need to find out from the user what their intent was and either have them edit the FDRA_Final_Breaks lines or have them help you with this step.
 - b. If not already open, open the Advanced Editing Toolbar.

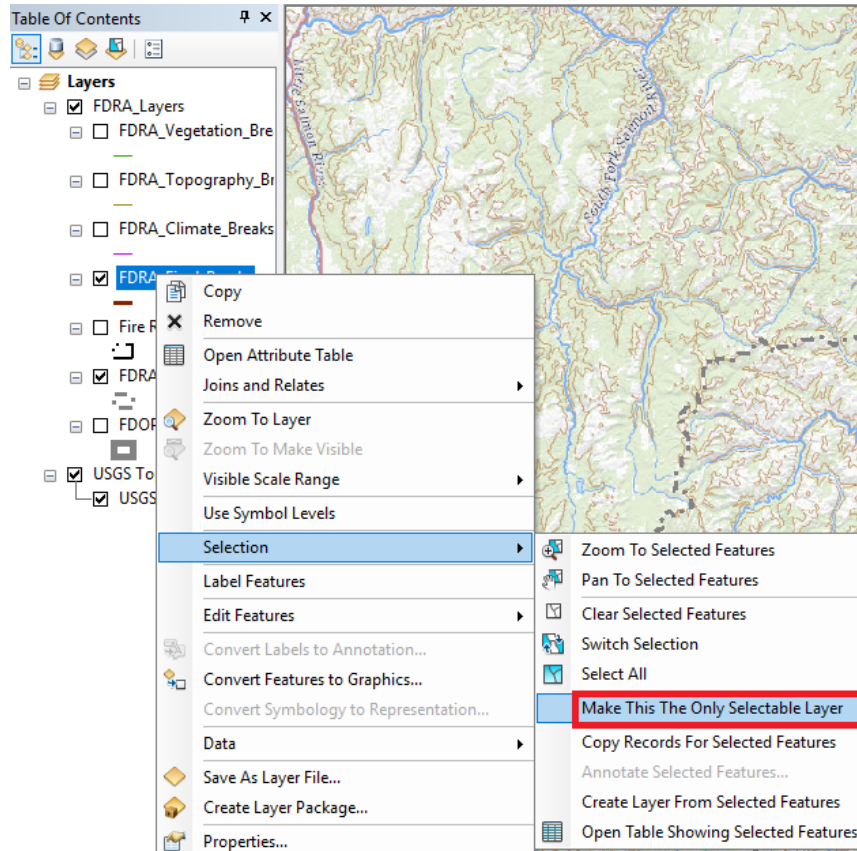


TechTip #2b

Converting “Final Break” Lines into Edge-Matched Fire Danger Rating Areas

Use this tech tip if your unit does not have response areas

- c. Make FDRA_Final_Breaks the only selectable feature

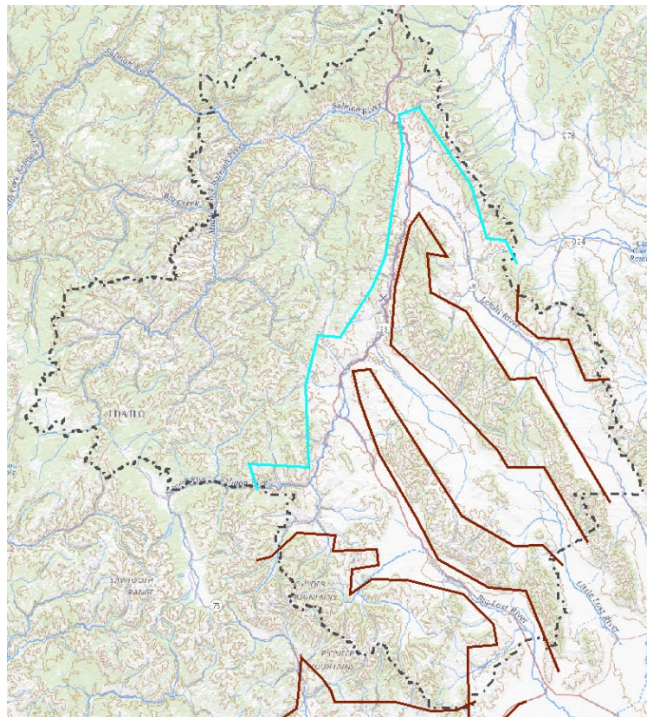


- d. Select a line in FDRA_Final_Breaks that you want to use to split FDRA_Boundary polygon feature. Only features that overlap the polygon are used in the split.

TechTip #2b

Converting “Final Break” Lines into Edge-Matched Fire Danger Rating Areas

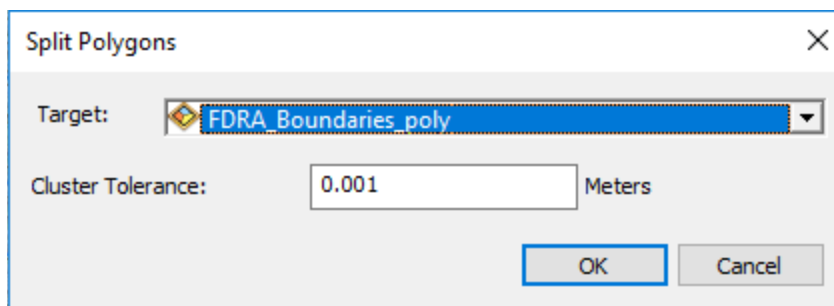
Use this tech tip if your unit does not have response areas



- e. Click Split Polygons on the Advanced Editing toolbar.



- f. For “Target”, choose FDRA_Boundaries_poly. Leaving the Cluster Tolerance at .001 meters is fine. The attributes from the original polygon will be retained.
- g. Click OK.

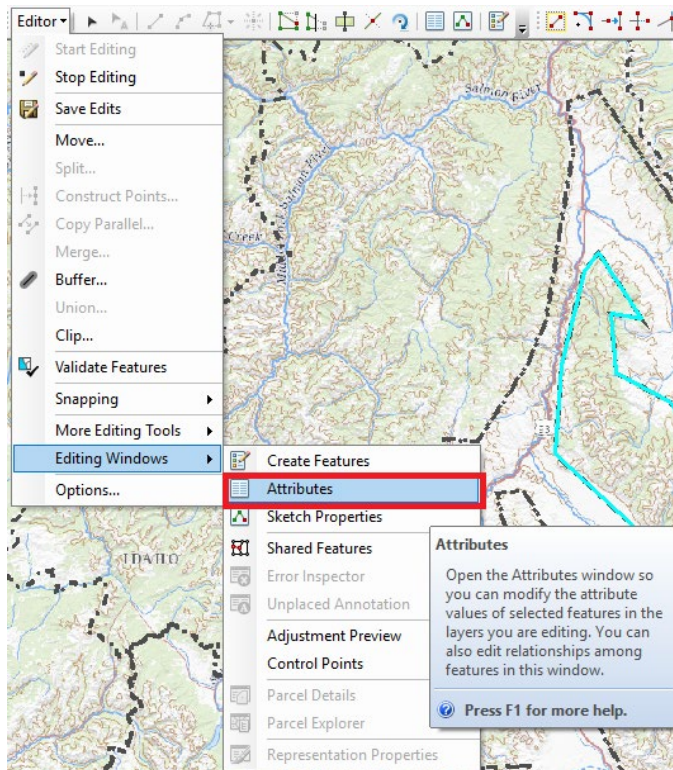


- h. Continue the above process d.-g. until the entire study area FDRAs have been created.
7. For more info on the split polygon tool, as well as info on similar tools that can be run with an ArcGIS Basic license, see: <http://desktop.arcgis.com/en/arcmap/10.5/manage-data/editing-fundamentals/splitting-a-polygon-by-an-overlapping-line-feature.htm>
8. Attribute the FDRAs.
- When you are done breaking apart the FDRAs, you will need to make FDRA_Boundaries_poly the only selectable layer (see step 6c).
 - Open the Attributes window by clicking the Editor menu, choosing Editing Windows, then selecting Attributes.

TechTip #2b

Converting “Final Break” Lines into Edge-Matched Fire Danger Rating Areas

Use this tech tip if your unit does not have response areas



- c. For each FDRA polygon you created, Attribute with an FDRA name and number. In situations where you have multiple FDRA polygons that belong to the same FDRA (for example, sky islands, mountain ranges within an area of desert all treated as the same FDRA etc), make sure that the FDRA Name and Number are the same for each of them.

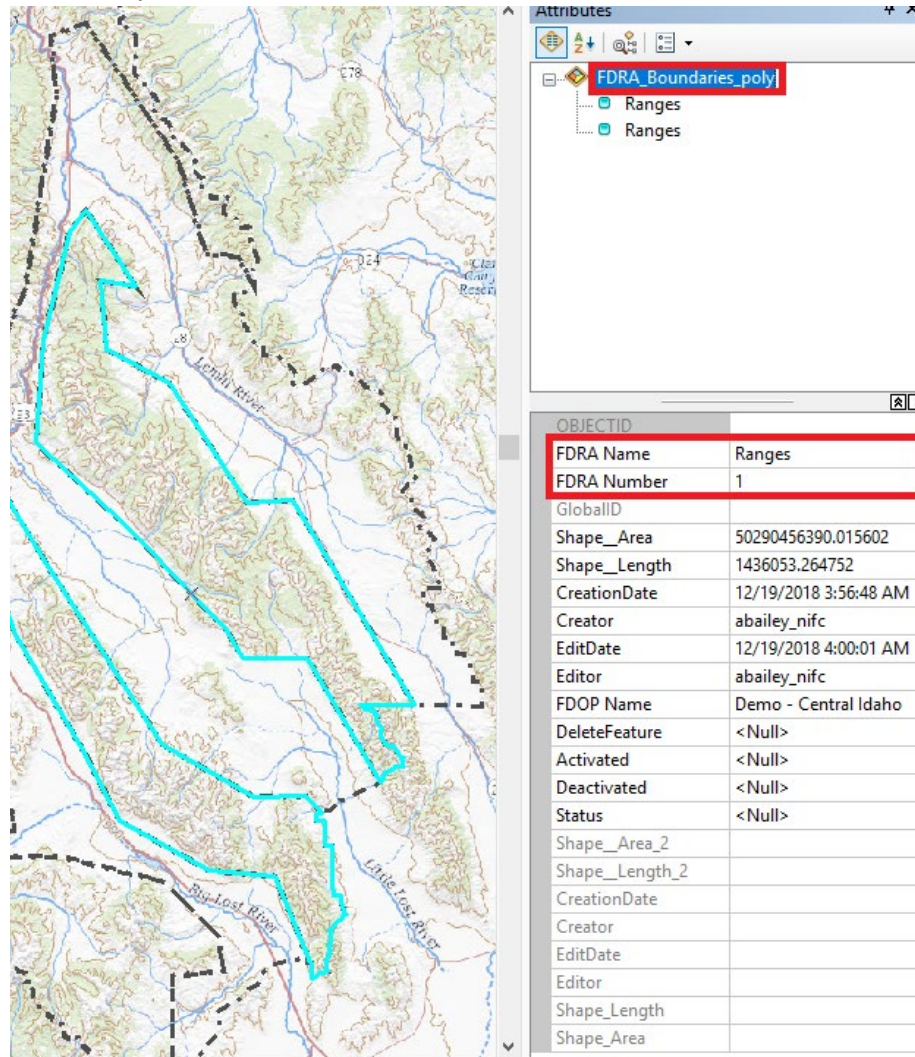
Holding down Shift while using the select tool, then selecting the group of features in the attribute window, will allow you to set all the attributes at the same time, ensuring

TechTip #2b

Converting “Final Break” Lines into Edge-Matched Fire Danger Rating Areas

Use this tech tip if your unit does not have response areas

consistency.



The screenshot displays a GIS interface. On the left, a map shows a terrain with a cyan-colored polygon representing a fire danger rating area. A dashed black line, representing a 'Final Break' line, follows the boundary of the cyan area. The map includes labels for 'Lemhi River' and 'Big Lost River'. On the right, the 'Attributes' window is open, showing a tree view with 'FDRA_Boundaries_poly' selected. Below the tree view is a table of attributes for the selected feature.

OBJECTID	
FDRA Name	Ranges
FDRA Number	1
GlobalID	
Shape_Area	50290456390.015602
Shape_Length	1436053.264752
CreationDate	12/19/2018 3:56:48 AM
Creator	abailey_nifc
EditDate	12/19/2018 4:00:01 AM
Editor	abailey_nifc
FDOP Name	Demo - Central Idaho
DeleteFeature	<Null>
Activated	<Null>
Deactivated	<Null>
Status	<Null>
Shape_Area_2	
Shape_Length_2	
CreationDate	
Creator	
EditDate	
Editor	
Shape_Length	
Shape_Area	

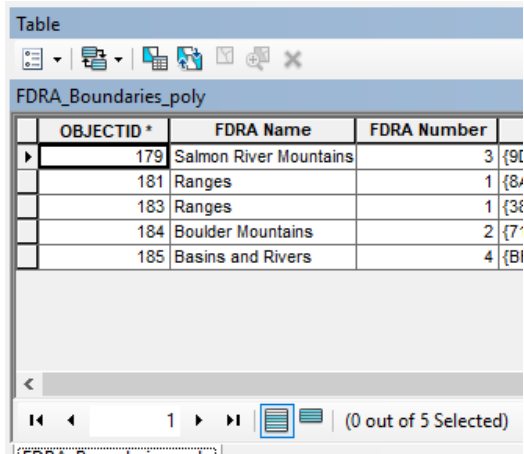
- d. Be sure to set the “Clip Fires For FireFamilyPlus” field to “Yes” – this will tell the automated tool to extract a set of fire history, formatted for use in FireFamilyPlus. More information can be found in Tech Tip 5, Exporting Fires By Fire Danger Rating Area.
- e. When finished, use the Editor menu to “Save Edits” and “Stop Editing”.

TechTip #2b

Converting “Final Break” Lines into Edge-Matched Fire Danger Rating Areas

Use this tech tip if your unit does not have response areas

- f. Review your work to ensure using the attribute table to ensure that all FDRAs are appropriately attributed. Once your edits synch to AGOL, fires will be extracted for each FDRA within 5 minutes so it is important to get these right before syncing! If they're not right, start editing again and make the necessary changes.



OBJECTID *	FDRA Name	FDRA Number
179	Salmon River Mountains	3
181	Ranges	1
183	Ranges	1
184	Boulder Mountains	2
185	Basins and Rivers	4

9. Synchronize your edits back to AGOL
 - a. Right-click FDRA_Layers and choose the Edit Features/Synchronize Local Edits with Server option.

