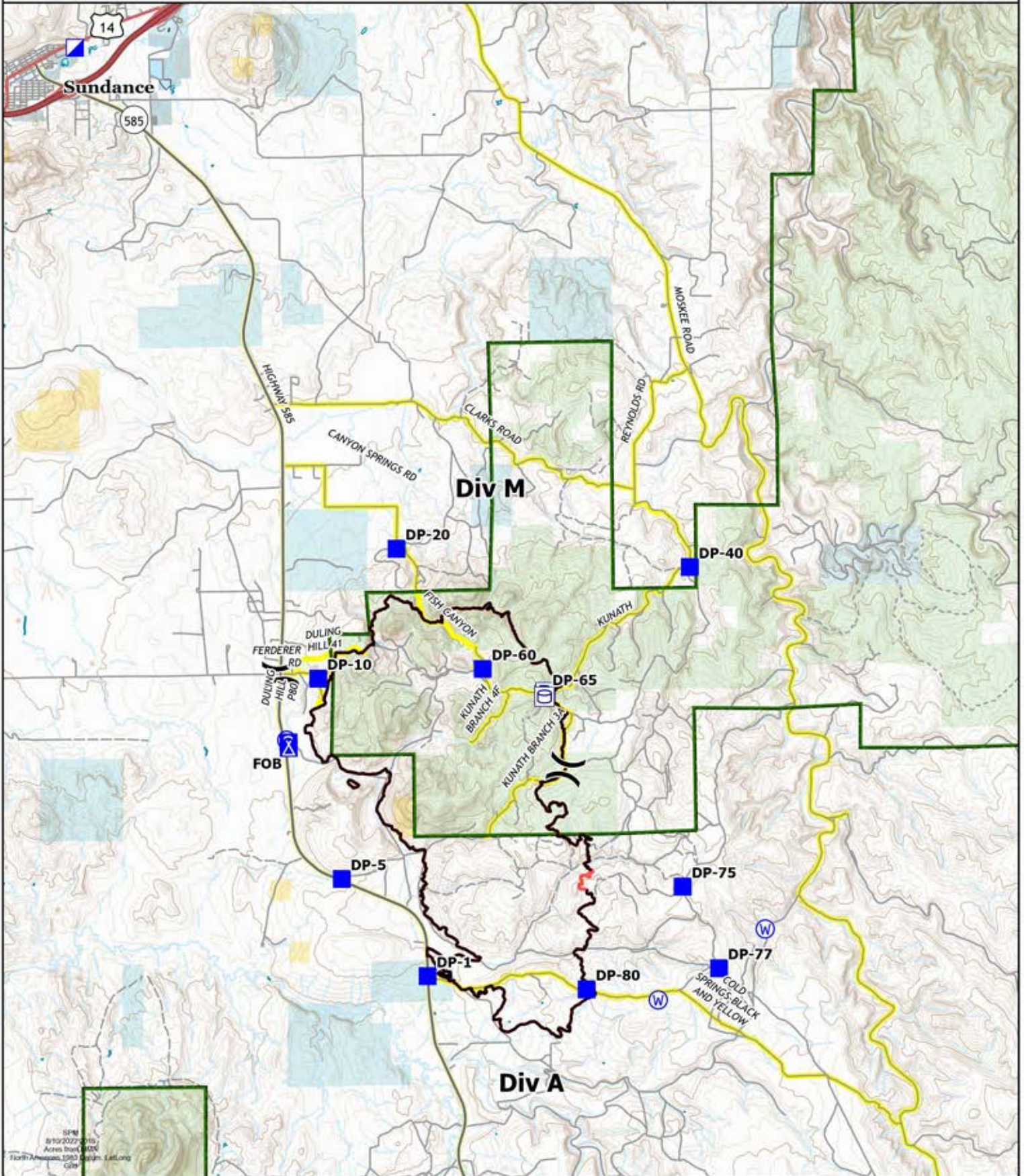


Transportation

Fish
WYCRX-220541
8/11/22 Day
6,793 acres at 8/9/2022 1250
98% containment

- | | | |
|-------------------------------------|---|--|
| (X) Division Break | (P) Pump | (Green Outline) Forest Service |
| (Blue Square) Incident Command Post | (Water Tank Icon) Water Tank | (Yellow Outline) Bureau of Land Management (BLM) |
| (Blue Square) Drop Point | (Black Line) Contained | (Light Blue Outline) Local Government |
| (Blue Tent) Camp | (Yellow Line) Main Routes | (Light Blue Outline) State |
| (Blue Square) Staging Area | (Red Outline) Wildfire Daily Fire Perimeter | (Light Green Outline) US Forest Service (USFS) |
| (Blue Circle) Water Source | (Yellow Outline) County or Equivalent | (White Outline) Private |



SPN
8/10/2022 10:15
Acres from 0/0/0
North American 1983 Datum, UTM Long
GCR