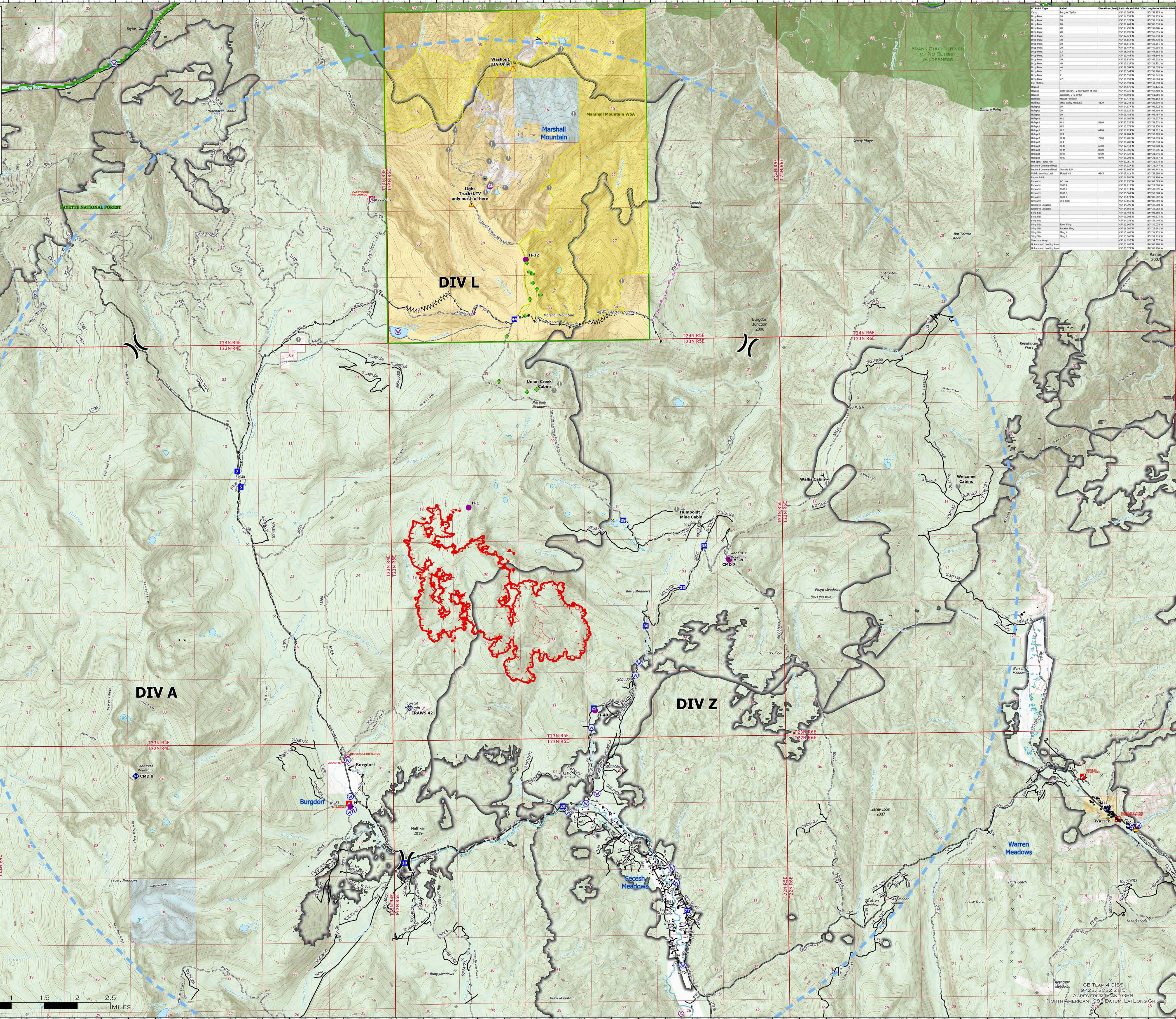


OPERATIONS

TENMILE
ID-PAF-005567
9/23/2022 DAY

2,024 ACRES AT 2329 HRS ON 9/20



Item Type	Label	Description (Foot) (Latitude) (Longitude) (Elevation) (ft)
Brushy Spike	101	39° 13' 17.78" N 115° 51' 52.92" W
Brushy Spike	102	39° 13' 17.78" N 115° 51' 52.92" W
Brushy Spike	103	39° 13' 17.78" N 115° 51' 52.92" W
Brushy Spike	104	39° 13' 17.78" N 115° 51' 52.92" W
Brushy Spike	105	39° 13' 17.78" N 115° 51' 52.92" W
Brushy Spike	106	39° 13' 17.78" N 115° 51' 52.92" W
Brushy Spike	107	39° 13' 17.78" N 115° 51' 52.92" W
Brushy Spike	108	39° 13' 17.78" N 115° 51' 52.92" W
Brushy Spike	109	39° 13' 17.78" N 115° 51' 52.92" W
Brushy Spike	110	39° 13' 17.78" N 115° 51' 52.92" W
Brushy Spike	111	39° 13' 17.78" N 115° 51' 52.92" W
Brushy Spike	112	39° 13' 17.78" N 115° 51' 52.92" W
Brushy Spike	113	39° 13' 17.78" N 115° 51' 52.92" W
Brushy Spike	114	39° 13' 17.78" N 115° 51' 52.92" W
Brushy Spike	115	39° 13' 17.78" N 115° 51' 52.92" W
Brushy Spike	116	39° 13' 17.78" N 115° 51' 52.92" W
Brushy Spike	117	39° 13' 17.78" N 115° 51' 52.92" W
Brushy Spike	118	39° 13' 17.78" N 115° 51' 52.92" W
Brushy Spike	119	39° 13' 17.78" N 115° 51' 52.92" W
Brushy Spike	120	39° 13' 17.78" N 115° 51' 52.92" W
Brushy Spike	121	39° 13' 17.78" N 115° 51' 52.92" W
Brushy Spike	122	39° 13' 17.78" N 115° 51' 52.92" W
Brushy Spike	123	39° 13' 17.78" N 115° 51' 52.92" W
Brushy Spike	124	39° 13' 17.78" N 115° 51' 52.92" W
Brushy Spike	125	39° 13' 17.78" N 115° 51' 52.92" W
Brushy Spike	126	39° 13' 17.78" N 115° 51' 52.92" W
Brushy Spike	127	39° 13' 17.78" N 115° 51' 52.92" W
Brushy Spike	128	39° 13' 17.78" N 115° 51' 52.92" W
Brushy Spike	129	39° 13' 17.78" N 115° 51' 52.92" W
Brushy Spike	130	39° 13' 17.78" N 115° 51' 52.92" W
Brushy Spike	131	39° 13' 17.78" N 115° 51' 52.92" W
Brushy Spike	132	39° 13' 17.78" N 115° 51' 52.92" W
Brushy Spike	133	39° 13' 17.78" N 115° 51' 52.92" W
Brushy Spike	134	39° 13' 17.78" N 115° 51' 52.92" W
Brushy Spike	135	39° 13' 17.78" N 115° 51' 52.92" W
Brushy Spike	136	39° 13' 17.78" N 115° 51' 52.92" W
Brushy Spike	137	39° 13' 17.78" N 115° 51' 52.92" W
Brushy Spike	138	39° 13' 17.78" N 115° 51' 52.92" W
Brushy Spike	139	39° 13' 17.78" N 115° 51' 52.92" W
Brushy Spike	140	39° 13' 17.78" N 115° 51' 52.92" W
Brushy Spike	141	39° 13' 17.78" N 115° 51' 52.92" W
Brushy Spike	142	39° 13' 17.78" N 115° 51' 52.92" W
Brushy Spike	143	39° 13' 17.78" N 115° 51' 52.92" W
Brushy Spike	144	39° 13' 17.78" N 115° 51' 52.92" W
Brushy Spike	145	39° 13' 17.78" N 115° 51' 52.92" W
Brushy Spike	146	39° 13' 17.78" N 115° 51' 52.92" W
Brushy Spike	147	39° 13' 17.78" N 115° 51' 52.92" W
Brushy Spike	148	39° 13' 17.78" N 115° 51' 52.92" W
Brushy Spike	149	39° 13' 17.78" N 115° 51' 52.92" W
Brushy Spike	150	39° 13' 17.78" N 115° 51' 52.92" W
Brushy Spike	151	39° 13' 17.78" N 115° 51' 52.92" W
Brushy Spike	152	39° 13' 17.78" N 115° 51' 52.92" W
Brushy Spike	153	39° 13' 17.78" N 115° 51' 52.92" W
Brushy Spike	154	39° 13' 17.78" N 115° 51' 52.92" W
Brushy Spike	155	39° 13' 17.78" N 115° 51' 52.92" W
Brushy Spike	156	39° 13' 17.78" N 115° 51' 52.92" W
Brushy Spike	157	39° 13' 17.78" N 115° 51' 52.92" W
Brushy Spike	158	39° 13' 17.78" N 115° 51' 52.92" W
Brushy Spike	159	39° 13' 17.78" N 115° 51' 52.92" W
Brushy Spike	160	39° 13' 17.78" N 115° 51' 52.92" W
Brushy Spike	161	39° 13' 17.78" N 115° 51' 52.92" W
Brushy Spike	162	39° 13' 17.78" N 115° 51' 52.92" W
Brushy Spike	163	39° 13' 17.78" N 115° 51' 52.92" W
Brushy Spike	164	39° 13' 17.78" N 115° 51' 52.92" W
Brushy Spike	165	39° 13' 17.78" N 115° 51' 52.92" W
Brushy Spike	166	39° 13' 17.78" N 115° 51' 52.92" W
Brushy Spike	167	39° 13' 17.78" N 115° 51' 52.92" W
Brushy Spike	168	39° 13' 17.78" N 115° 51' 52.92" W
Brushy Spike	169	39° 13' 17.78" N 115° 51' 52.92" W
Brushy Spike	170	39° 13' 17.78" N 115° 51' 52.92" W
Brushy Spike	171	39° 13' 17.78" N 115° 51' 52.92" W
Brushy Spike	172	39° 13' 17.78" N 115° 51' 52.92" W
Brushy Spike	173	39° 13' 17.78" N 115° 51' 52.92" W
Brushy Spike	174	39° 13' 17.78" N 115° 51' 52.92" W
Brushy Spike	175	39° 13' 17.78" N 115° 51' 52.92" W
Brushy Spike	176	39° 13' 17.78" N 115° 51' 52.92" W
Brushy Spike	177	39° 13' 17.78" N 115° 51' 52.92" W
Brushy Spike	178	39° 13' 17.78" N 115° 51' 52.92" W
Brushy Spike	179	39° 13' 17.78" N 115° 51' 52.92" W
Brushy Spike	180	39° 13' 17.78" N 115° 51' 52.92" W
Brushy Spike	181	39° 13' 17.78" N 115° 51' 52.92" W
Brushy Spike	182	39° 13' 17.78" N 115° 51' 52.92" W
Brushy Spike	183	39° 13' 17.78" N 115° 51' 52.92" W
Brushy Spike	184	39° 13' 17.78" N 115° 51' 52.92" W
Brushy Spike	185	39° 13' 17.78" N 115° 51' 52.92" W
Brushy Spike	186	39° 13' 17.78" N 115° 51' 52.92" W
Brushy Spike	187	39° 13' 17.78" N 115° 51' 52.92" W
Brushy Spike	188	39° 13' 17.78" N 115° 51' 52.92" W
Brushy Spike	189	39° 13' 17.78" N 115° 51' 52.92" W
Brushy Spike	190	39° 13' 17.78" N 115° 51' 52.92" W
Brushy Spike	191	39° 13' 17.78" N 115° 51' 52.92" W
Brushy Spike	192	39° 13' 17.78" N 115° 51' 52.92" W
Brushy Spike	193	39° 13' 17.78" N 115° 51' 52.92" W
Brushy Spike	194	39° 13' 17.78" N 115° 51' 52.92" W
Brushy Spike	195	39° 13' 17.78" N 115° 51' 52.92" W
Brushy Spike	196	39° 13' 17.78" N 115° 51' 52.92" W
Brushy Spike	197	39° 13' 17.78" N 115° 51' 52.92" W
Brushy Spike	198	39° 13' 17.78" N 115° 51' 52.92" W
Brushy Spike	199	39° 13' 17.78" N 115° 51' 52.92" W
Brushy Spike	200	39° 13' 17.78" N 115° 51' 52.92" W

IR Scattered Heat	IR Isolated Heat Source	Whitebark Pine Plus Tree	Aerial Hazard	Helispot	Sling Site	Division Break	Drop Point	Camp	Value at Risk	Fire Station	Mobile Weather Unit	Repeater	Hazard	Water Source	Restricted Water Source	Completed Fuel Break	Completed Hand Line	Completed Road as Line	Planned Fuel Break	Planned Road as Line	Other	Temporary Flight Restriction	Uncontained	Basic Custodial Care: 1 (CLOSED)	High Clearance Vehicles: 2	Passenger Cars: 3, 4, 5	Other Road	Trail	Campground	Interpretive Site	Mine Prospect	Structures	FS Wilderness	FS Wild&Scenic Rivers	Bureau of Land Management (BLM)	State	US Forest Service (USFS)	Private; Undetermined	Marshall Mtn WSA	Forest Service - Admin
-------------------	-------------------------	--------------------------	---------------	----------	------------	----------------	------------	------	---------------	--------------	---------------------	----------	--------	--------------	-------------------------	----------------------	---------------------	------------------------	--------------------	----------------------	-------	------------------------------	-------------	----------------------------------	----------------------------	-------------------------	------------	-------	------------	-------------------	---------------	------------	---------------	-----------------------	---------------------------------	-------	--------------------------	-----------------------	------------------	------------------------



GB TEAM 4 GISS
9/22/2022 2115
ACRES FROM LAND GISS
NORTH AMERICAN 1983 DATUM; LATLONG GRID