

Briefing

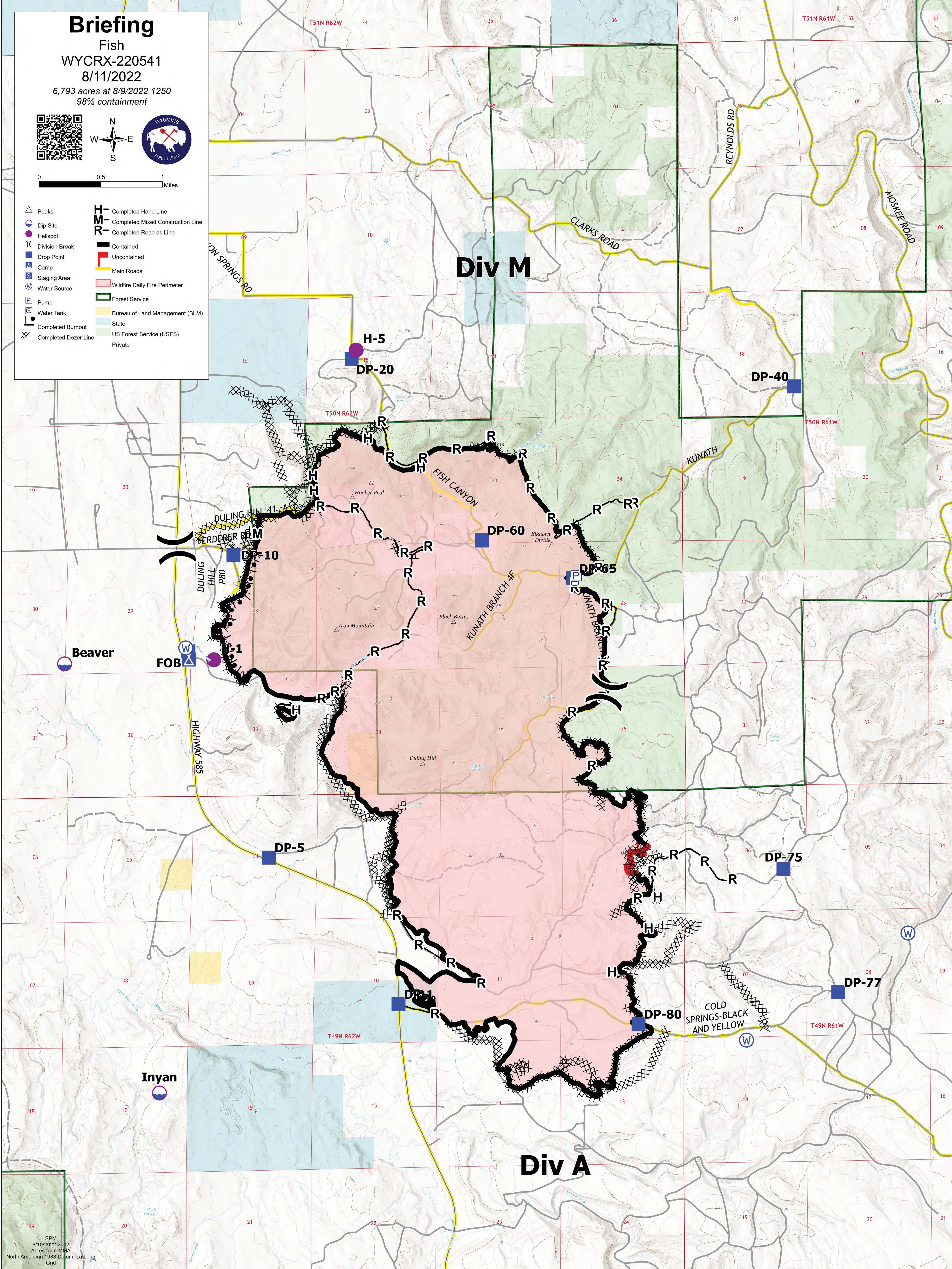
Fish
WYCRX-220541
8/11/2022

6,793 acres at 8/9/2022 1250
98% containment



0 0.5 1 Miles

- △ Peaks
- Dip Site
- Helispot
- ⌘ Division Break
- Drop Point
- ▲ Camp
- Ⓜ Staging Area
- Ⓜ Water Source
- Ⓜ Pump
- Ⓜ Water Tank
- Ⓜ Completed Burnout
- Ⓜ Completed Dozer Line
- H- Completed Hand Line
- M- Completed Mixed Construction Line
- R- Completed Road as Line
- ▬ Contained
- ▬ Uncontained
- ▬ Main Roads
- ▬ Wildfire Daily Fire Perimeter
- ▬ Forest Service
- ▬ Bureau of Land Management (BLM)
- ▬ State
- ▬ US Forest Service (USFS)
- ▬ Private



Div M

Div A



SPM
8/10/2022 2012
Acres from MMA
North American 1983 Datum: Lat/Long
Grid