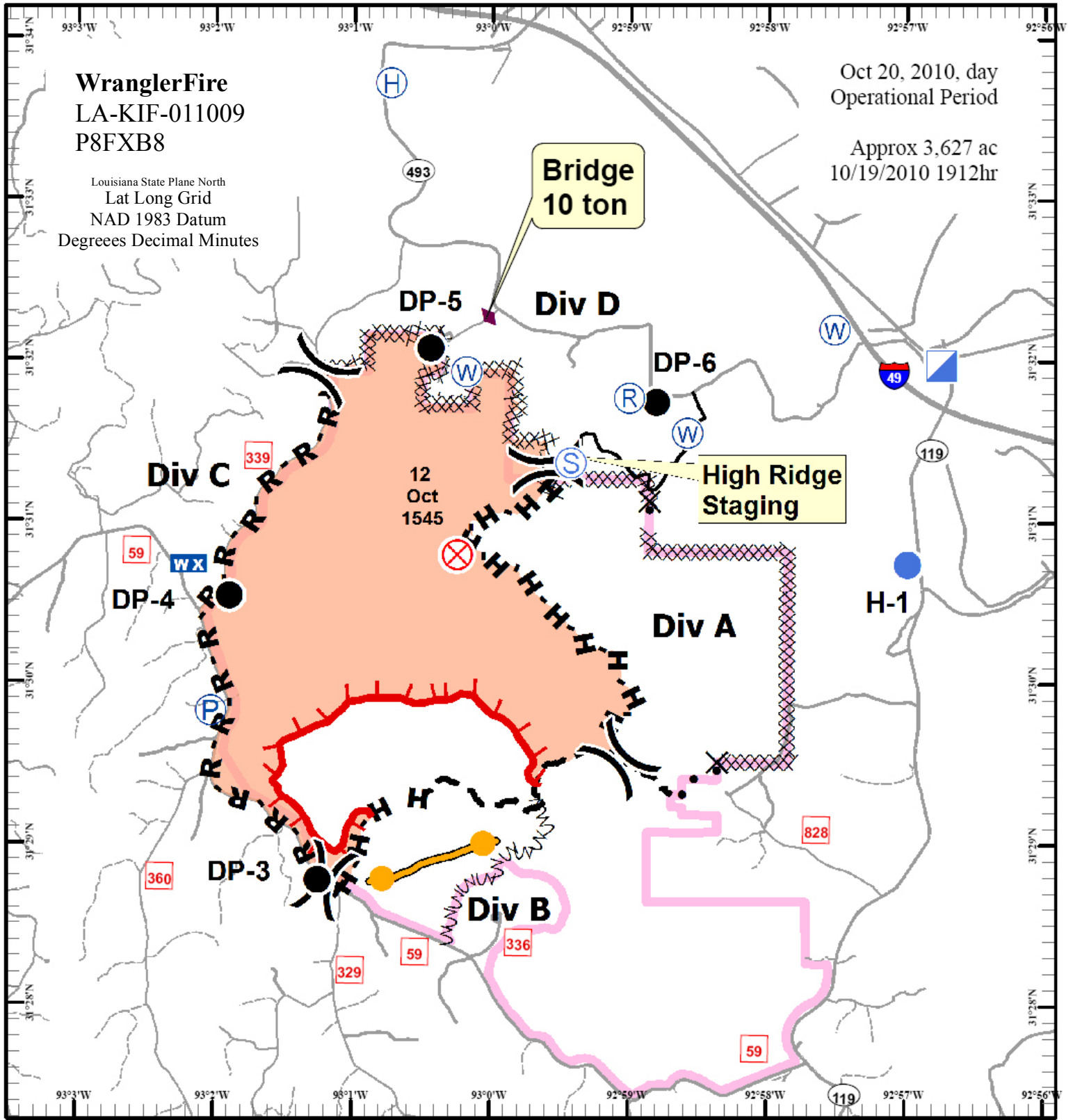


**WranglerFire**  
 LA-KIF-011009  
 P8FXB8

Louisiana State Plane North  
 Lat Long Grid  
 NAD 1983 Datum  
 Degrees Decimal Minutes

Oct 20, 2010, day  
 Operational Period

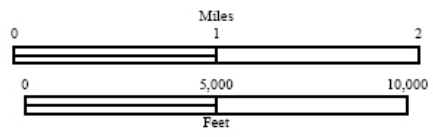
Approx 3,627 ac  
 10/19/2010 1912hr



- WX** Mobile Weather Unit
- Incident Command Post
- Helibase
- Fire Origin
- Staging Area
- Drop Point
- Helispot
- Water Source
- Repeater
- Pump

- Division
- Kisatchie Hills Wilderness
- Fire Perimeter
- Improved road
- Gravel road
- Dirt road
- Bridge 10 ton

**Briefing**



- Completed Dozer Line
- Planned Fire Line
- Proposed Dozer Line
- H - H** Hand Line
- R - R** Road as Completed Line
- Uncontrolled Fire Edge
- Management Action Point
- Fire Break Planned or Incomplete

Prepared by:  
 Smokey Bear  
 10/19/2010 2300 hrs